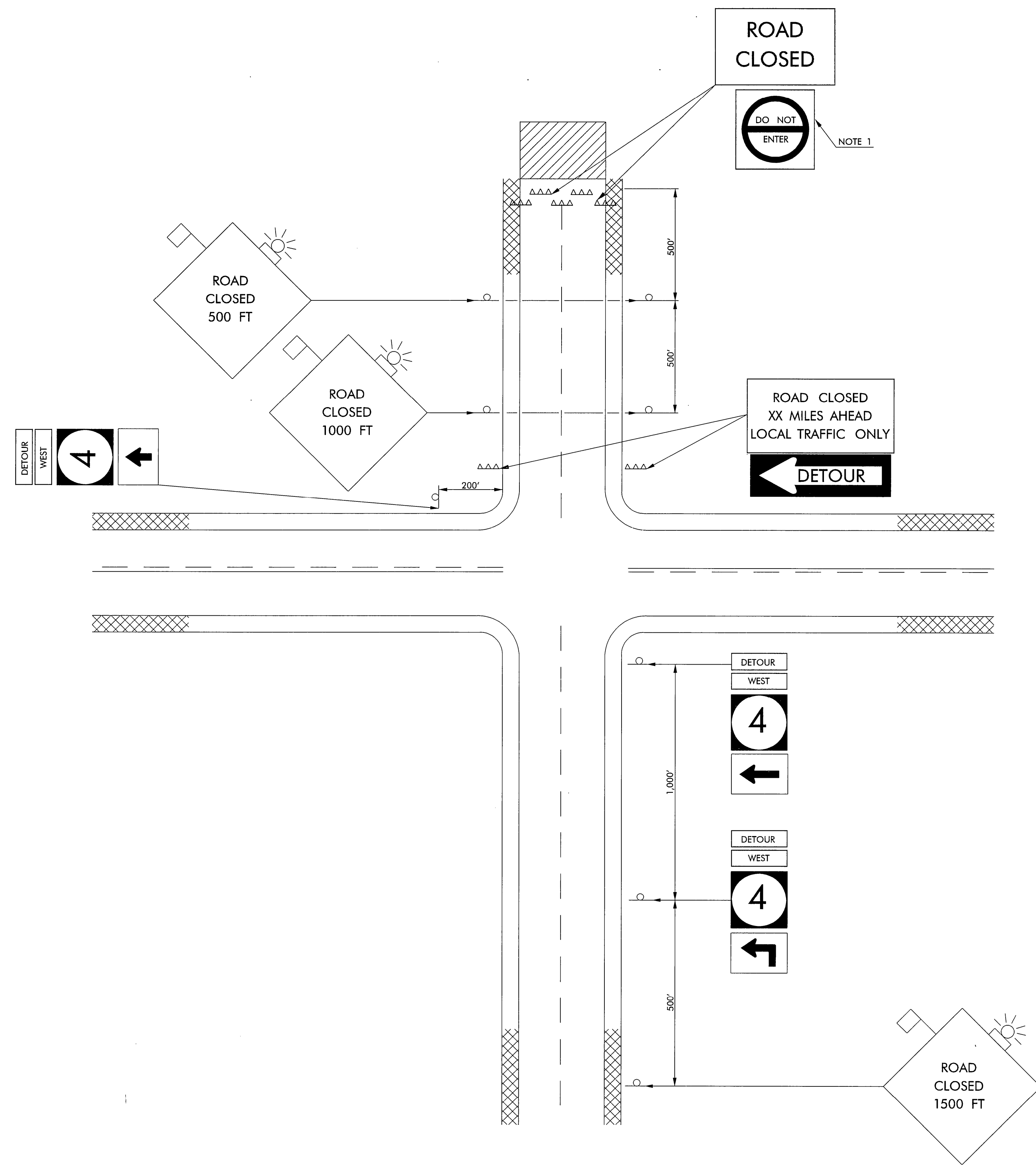


DESCRIPTION	REVISIONS	DATE



NOTE 1  
A SUFFICIENT NUMBER OF TYPE III BARRICADES, WITH SIGNS AS SHOWN, SHALL BE USED TO COMPLETELY CLOSE THE ROADWAY TO TRAFFIC FROM THE EDGE OF PAVEMENT TO THE EDGE OF PAVEMENT.

KEY:  
—○— SIGN  
▨ WORK AREA  
△△△ TYPE III BARRICADES

NOTES  
REGULATORY TRAFFIC CONTROL DEVICES ARE TO BE MODIFIED AS NEEDED FOR THE DURATION OF THE DETOUR.

IF THE ROAD IS OPENED FOR SOME DISTANCE BEYOND THE INTERSECTION AND/OR THERE ARE SIGNIFICANT ORIGIN/ DESTINATION POINTS BEYOND THE INTERSECTION, PLACE THE 'ROAD CLOSED' AND 'DETOUR' SIGN ON TYPE III BARRICADES LOCATED AT THE EDGE OF THE TRAVELED WAY.

IF THE ROAD IS CLOSED A SHORT DISTANCE BEYOND THE INTERSECTION AND THERE ARE FEW ORIGIN/DESTINATION POINTS BEYOND (E.G., A FEW RESIDENCES), THE 'ROAD CLOSED' AND 'DETOUR' SIGN MAY BE PLACED ON A TYPE III BARRICADE PLACED IN THE CENTER OF THE ROADWAY.

TYPICAL APPLICATION – ROADWAY CLOSED  
(TEMPORARILY) DETOUR ROUTE ESTABLISHED

APPROVED BY TRAFFIC ENGINEER <i>David Smith</i>	DATE 10-1-99
OKLAHOMA DEPT. OF TRANSPORTATION TRAFFIC STANDARD ( ENGLISH )	
TRAFFIC CONTROL STANDARD TYPICAL APPLICATION – ROADWAY CLOSED (TEMPORARILY) DETOUR ROUTE ESTABLISHED	
1999 SPECIFICATIONS	TCS47-1 00E T-547E