

DESCRIPTION	REVISIONS	DATE
RE-ISSUE NCHRP 350 DESIGN		11/02
REV. CONN. LOOPS & ANCHOR HOLES		5/09

DRAWING NOTES:

- 1 INCH RADIUS ALLOWED FOR EASE OF CASTING.
- THE TOP SURFACE OF ONE END OF EACH BARRIER UNIT SHALL BE PERMANENTLY MARKED INDICATING THE FOLLOWING INFORMATION:
  - NCHRP REPORT 350 APPROVED
  - TYPE F BARRIER
  - MANUFACTURER IDENTIFICATION
  - DATE MANUFACTURED (MONTH AND YEAR)
 EXAMPLE: 350F-SM9/01 (SM=SMITH MATERIALS)
- 1 INCH CHAMFER TO PREVENT SPALLING

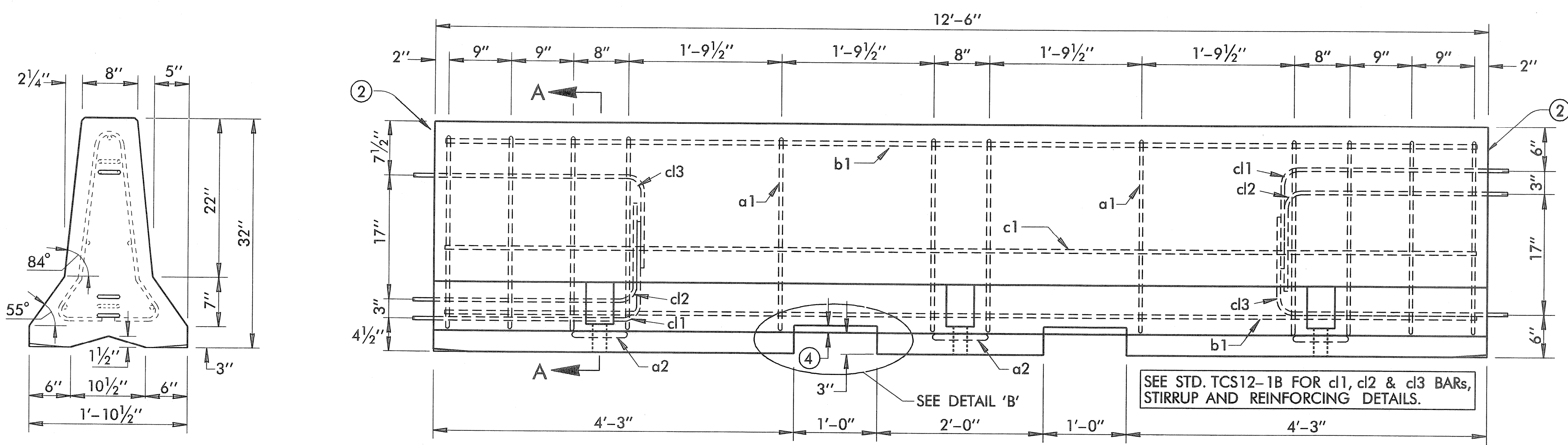
GENERAL NOTES:

- ALL CONSTRUCTION AND MATERIAL REQUIREMENTS OF THE PORTABLE PRECAST CONCRETE MEDIAN BARRIER, PROVIDED BY THE CONTRACTOR, SHALL BE IN ACCORDANCE WITH THE 1999 ENGLISH STANDARD SPECIFICATIONS & MEET REQUIREMENTS OF NCHRP REPORT 350, TEST LEVEL 3. CONTRACTOR MAY PROVIDE ANY PORTABLE F-SHAPE BARRIER DESIGN MEETING THE REQUIREMENTS OF NCHRP REPORT 350, SO LONG AS THE MATERIAL REQUIREMENTS OF 1999 STANDARD SPECIFICATIONS ARE MET.
- CONCRETE FOR PORTABLE PRECAST CONCRETE MEDIAN BARRIER SHALL REACH A MINIMUM OF 4000 PSI STRENGTH AFTER 28 DAYS.
- ALL REINFORCEMENT SHALL BE DEFORMED GRADE 60, AASHTO M 31, EXCEPT FOR THE CONNECTION LOOP BAR ASSEMBLY SHALL BE SMOOTH #6 BARS WITH A MINIMUM YIELD STRENGTH OF 60 KSI, A MINIMUM TENSILE STRENGTH OF 80 KSI, AND PASSING A 180 DEGREE BEND TEST USING A 2 3/4" PIN BEND DIAMETER. THE LOOPS SHALL BE INSTALLED WITHIN 1/8" OF THE PLAN DIMENSIONS.
- THE CONTRACTOR SHALL PROVIDE FOR AN APPROVED MONITORING SCHEDULE WITH A PERSON ON CALL AND AVAILABLE 24 HOURS A DAY, EACH DAY OF THE WEEK, TO REALIGN BARRIER RAIL WHICH HAS BEEN STRUCK. INITIATION OF SERVICE SHALL BE WITHIN ONE HOUR OF NOTIFICATION OF NEED.
- CONTRACTOR SHALL FURNISH AND INSTALL REFLECTIVE MARKERS ON BARRIER AS RECOMMENDED BY THE MANUFACTURER AND SHOWN ON THIS SHEET. THE MARKERS SHALL BE INSTALLED AT NOMINAL 12.5 FOOT SPACING AND FACE ONCOMING TRAFFIC. THE CONTRACTOR SHALL MAINTAIN THE MARKERS AND PROMPTLY REPAIR OR REPLACE ANY DAMAGED OR MISSING UNITS. ALL COSTS FOR FURNISHING, INSTALLING AND MAINTAINING MARKERS SHALL BE INCLUDED IN THE PRICE BID FOR THE TEMPORARY BARRIER RAIL.
- UNLESS STATED OTHERWISE IN THE PLANS, THE BARRIER RAIL SECTIONS SHALL REMAIN THE PROPERTY OF THE CONTRACTOR AND AT THE COMPLETION OF THE WORK SHALL BE REMOVED FROM THE SITE BY CONTRACTOR.
- WHEN TEMPORARY BARRIER RAIL IS INSTALLED WITHIN 2 FEET OF A DROPOFF, BARRIER SECTIONS SHALL BE ANCHORED WITH TIE DOWN PINS AS DESCRIBED AND SHOWN ON TIE-DOWN DETAIL, THIS SHEET. SEE TRAFFIC STD. TCS29-1-00E FOR PAVEMENT EDGE DROP-OFF DETAILS.

BASIS OF PAYMENT		
ITEM NO.	ITEM	UNIT
627.06(E)	PRECAST CONCRETE MEDIAN BARRIER - PORTABLE TYPE	L.F.
627.06(O)	REL. OF RENTED PORT. PREC. CONC. MED. BARR.	L.F.
627.06(P)	RENTED PORT. TYPE PREC. CONC. MED. BAR.	L.F.

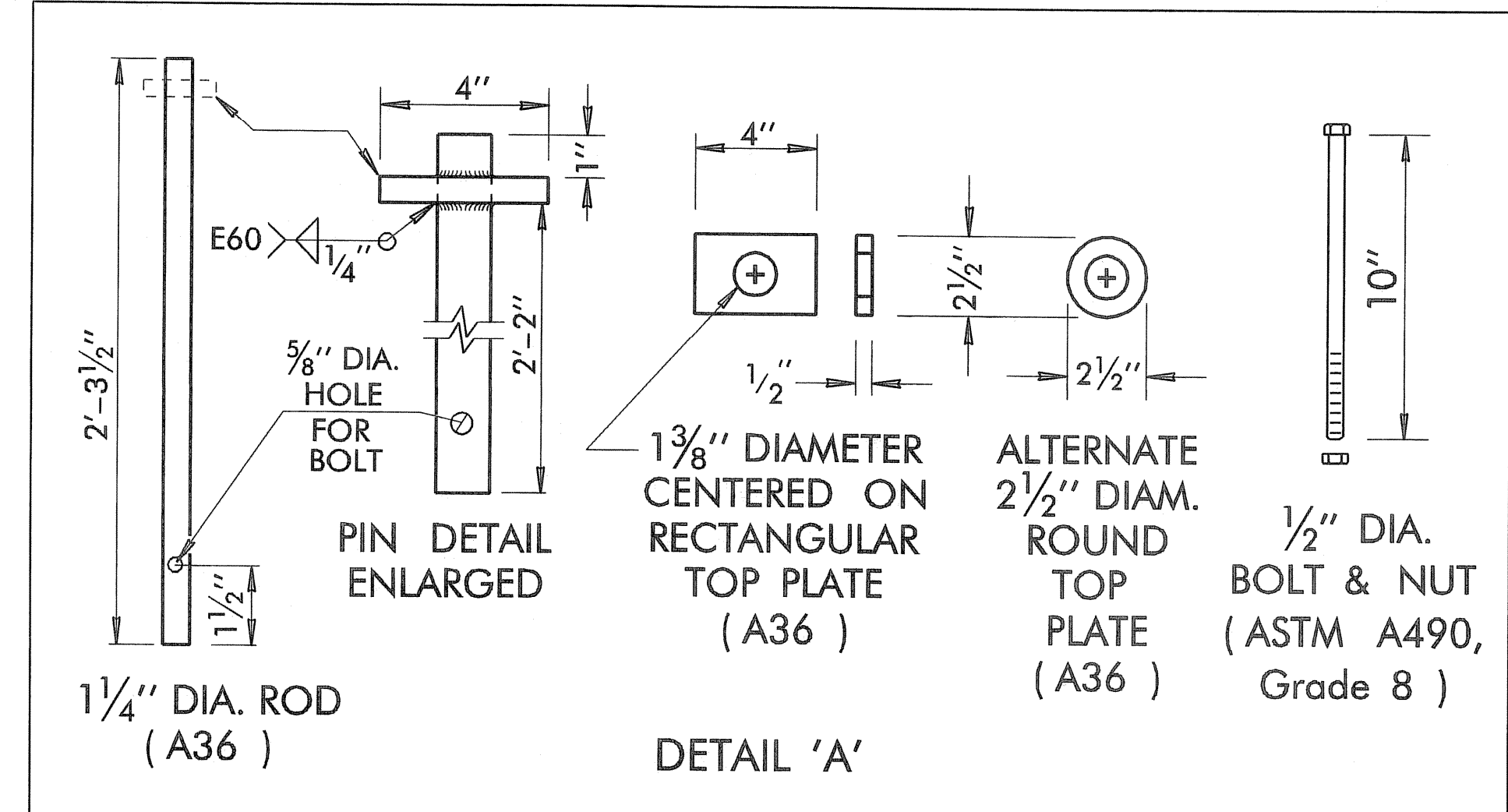
THIS STANDARD SHALL BE USED IN CONJUNCTION WITH TCS12-1B.

APPROVED BY TRAFFIC ENGINEER	<i>Paul J. Smith</i>	DATE	1/20/09
OKLAHOMA DEPT. OF TRANSPORTATION			
TRAFFIC STANDARD (ENGLISH)			
TRAFFIC CONTROL STANDARD			
PRECAST CONCRETE MEDIAN BARRIER (PORTABLE TYPE)			
1999 SPECIFICATIONS	(NCHRP 350 F-SHAPE)	TCS12-1A	01E
			T-512AE

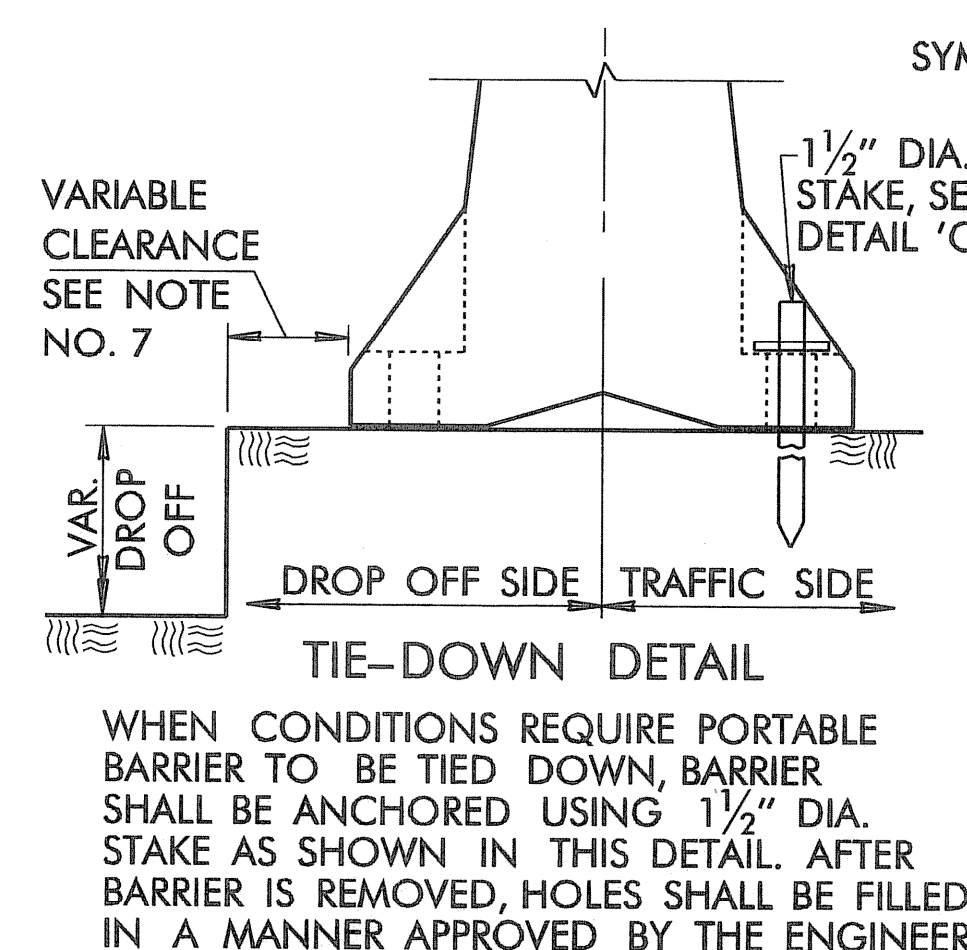


END VIEW

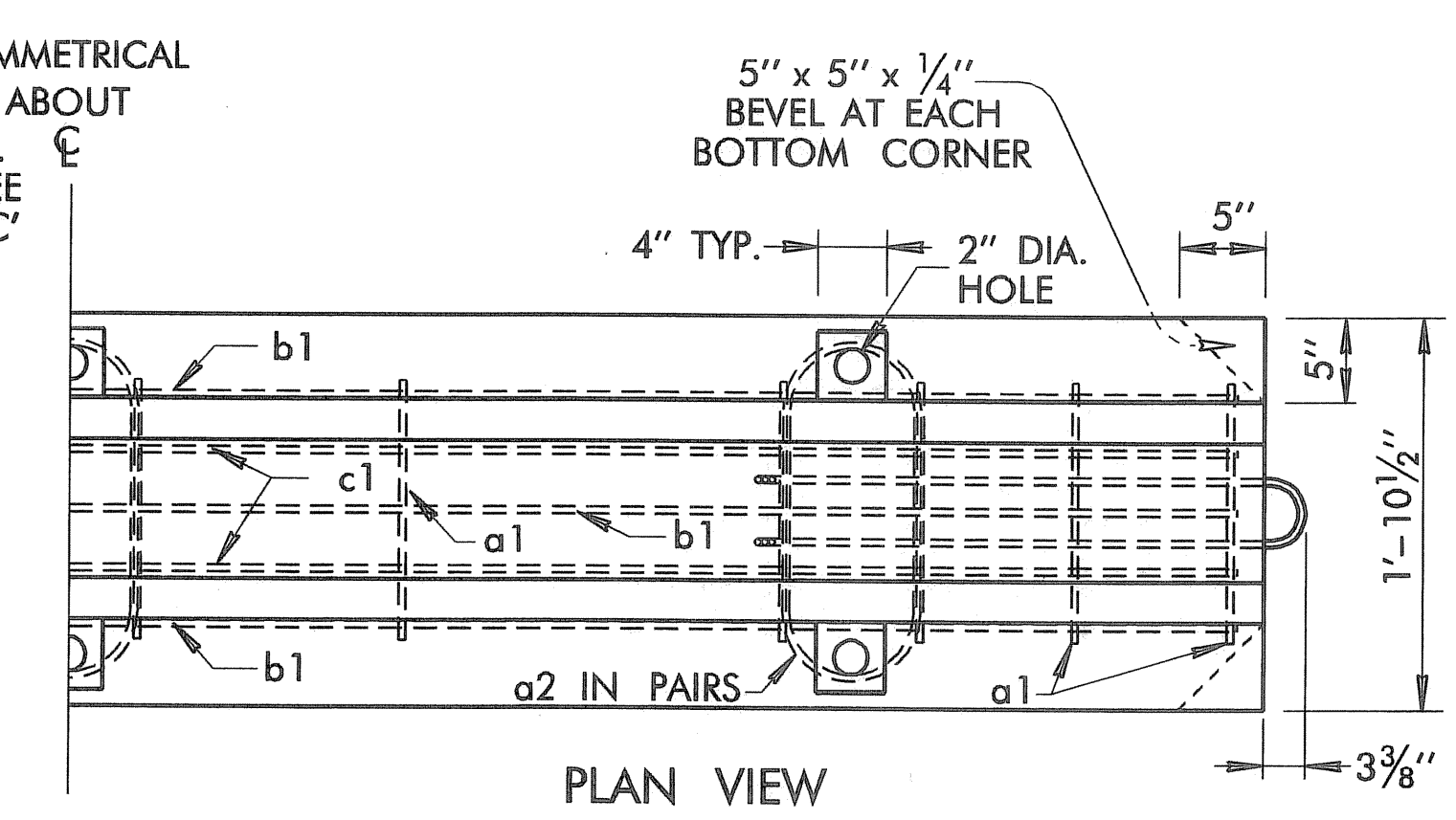
ELEVATION VIEW



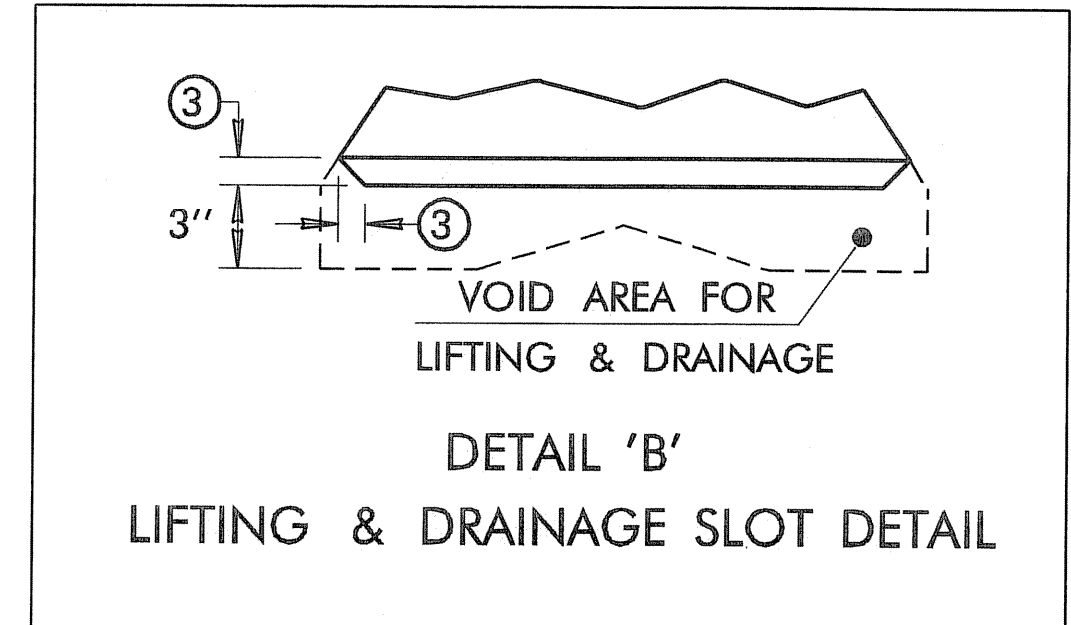
DETAIL 'A'



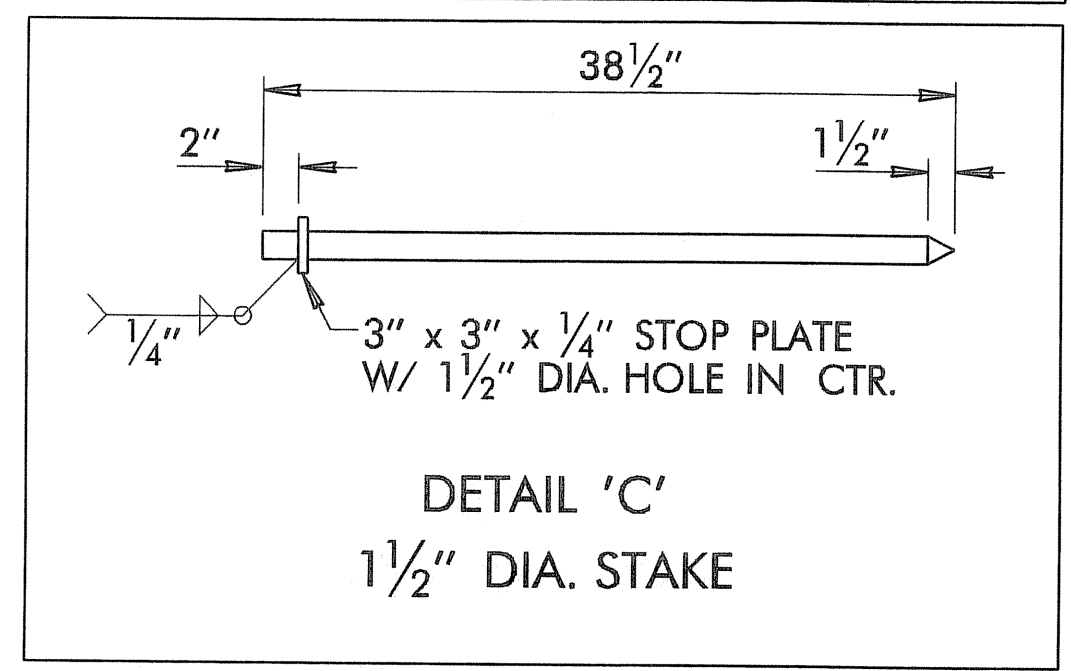
WHEN CONDITIONS REQUIRE PORTABLE BARRIER TO BE TIED DOWN, BARRIER SHALL BE ANCHORED USING 1 1/2" DIA. STAKE AS SHOWN IN THIS DETAIL. AFTER BARRIER IS REMOVED, HOLES SHALL BE FILLED IN A MANNER APPROVED BY THE ENGINEER.



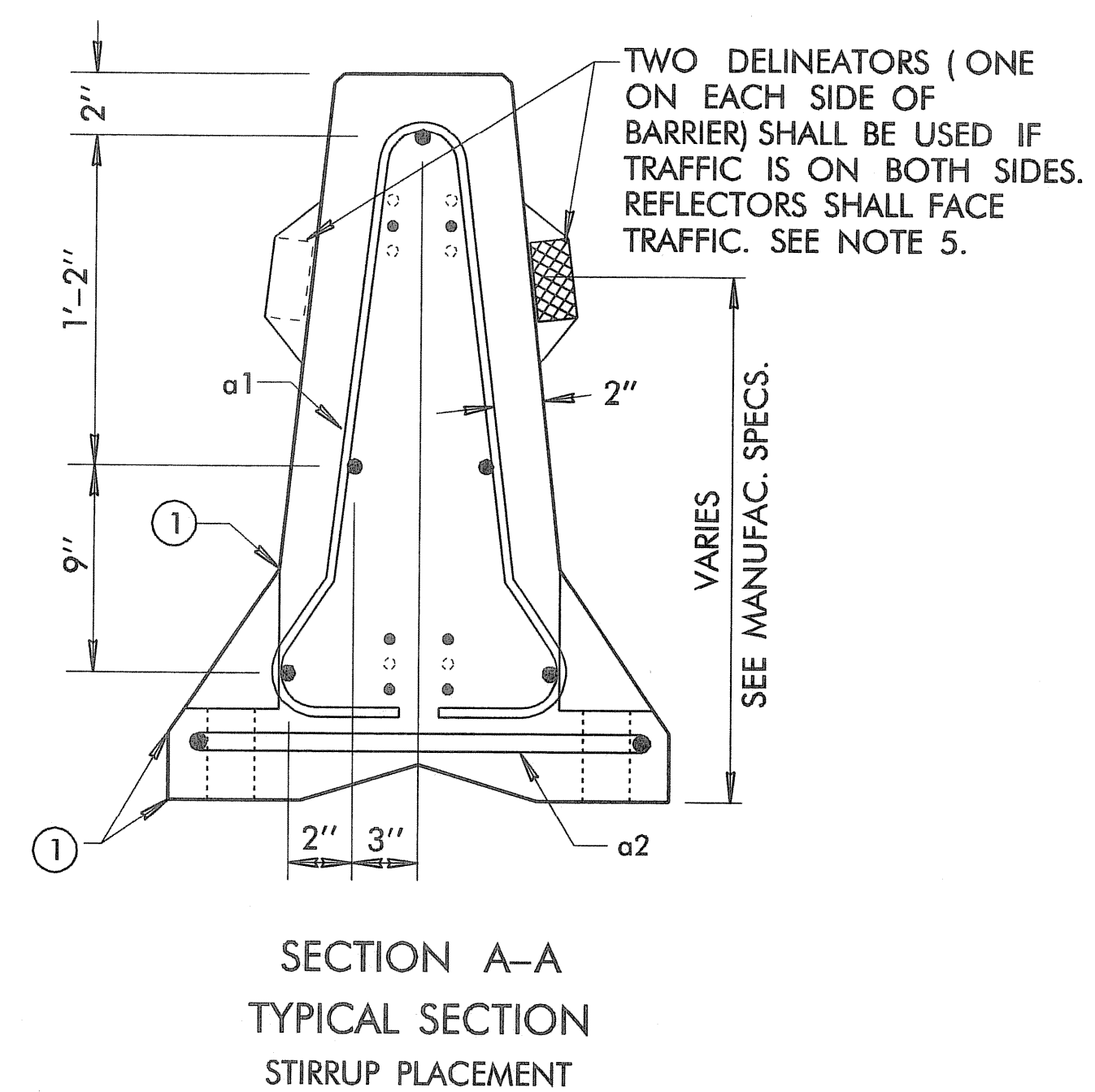
PLAN VIEW



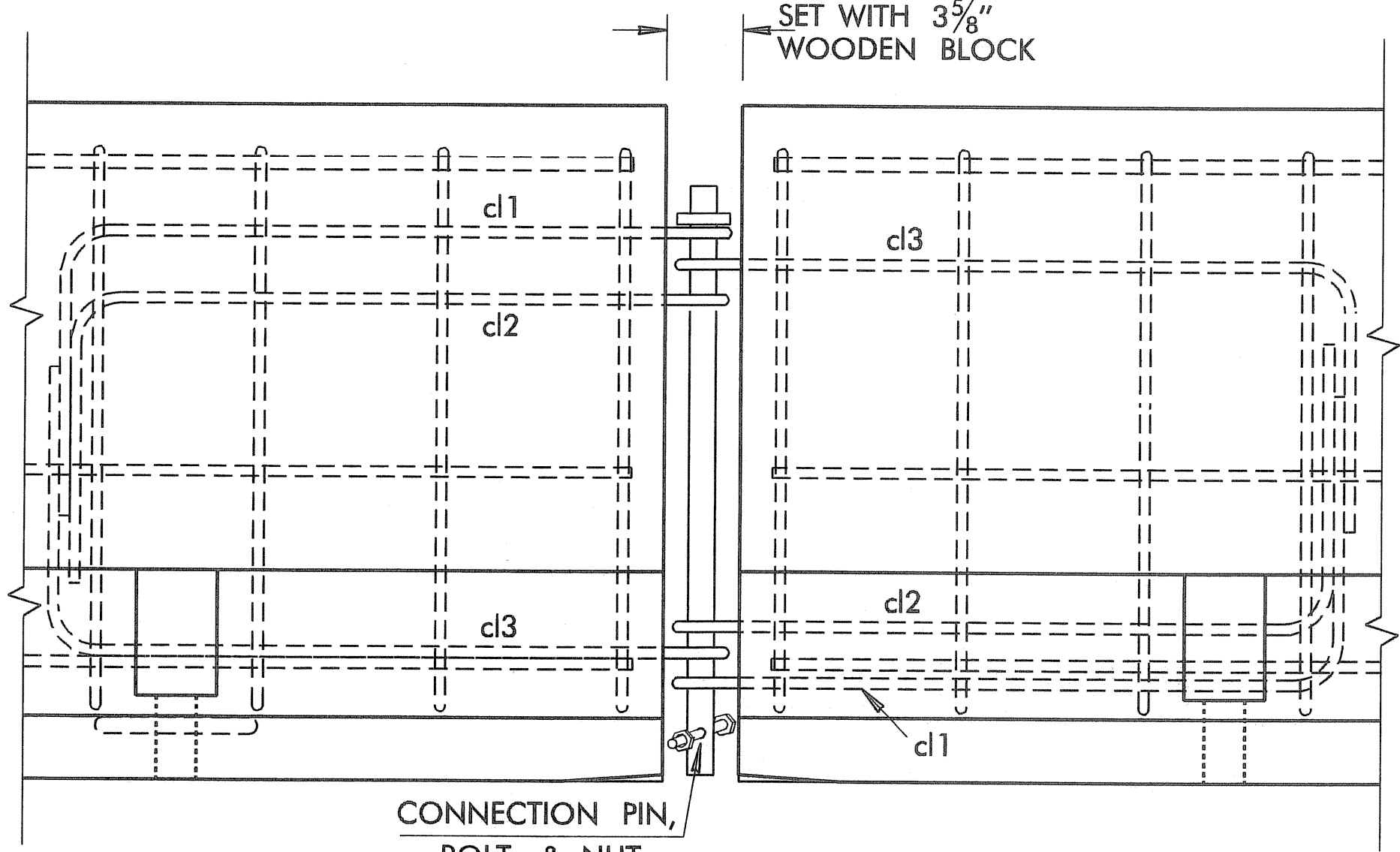
DETAIL 'B'  
LIFTING & DRAINAGE SLOT DETAIL



DETAIL 'C'  
1 1/2" DIA. STAKE



SECTION A-A  
TYPICAL SECTION  
STIRRUP PLACEMENT



DETAILS OF BARRIER SECTION CONNECTION