

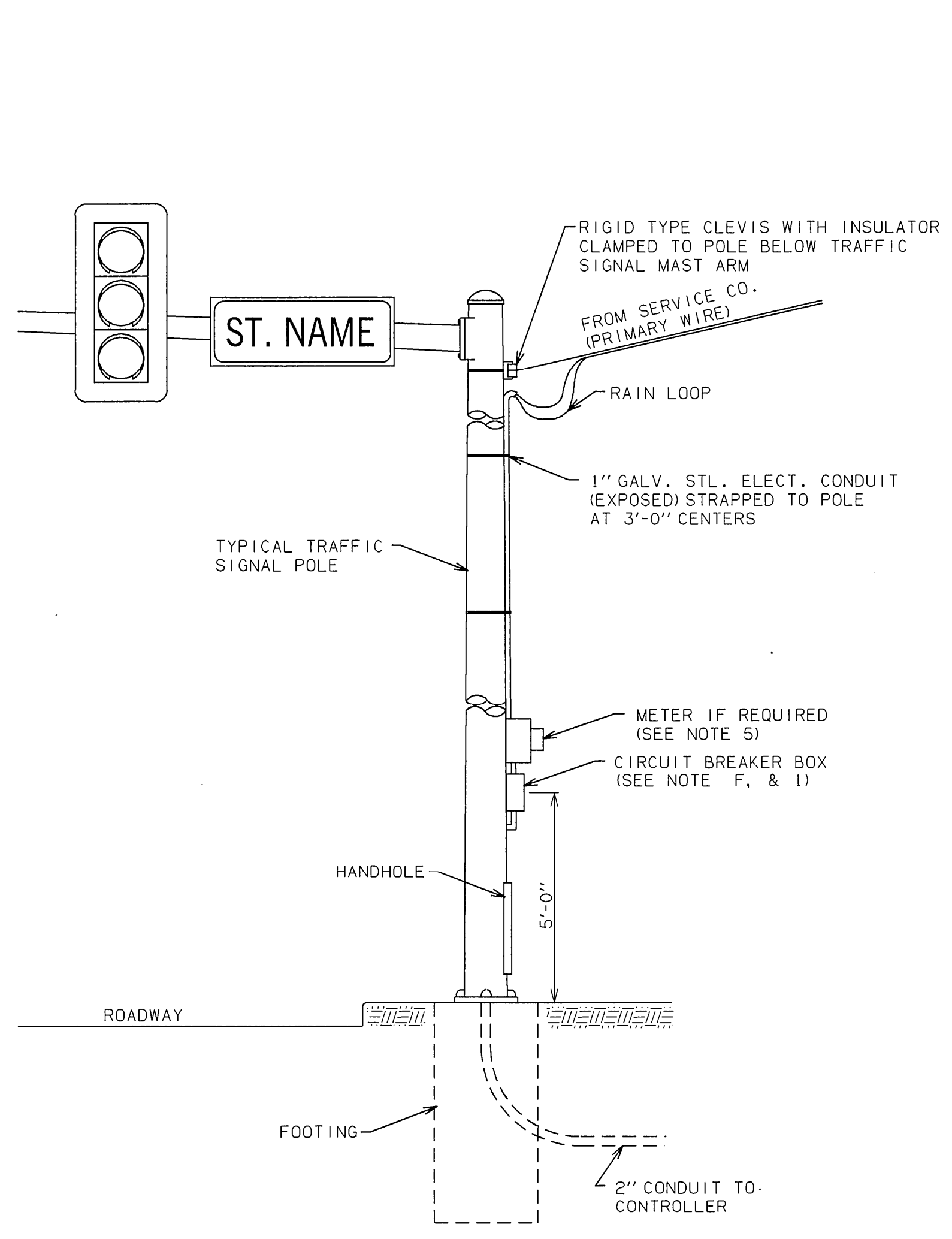
DESCRIPTION	REVISIONS	DATE
-------------	-----------	------

MATERIAL SPECIFICATIONS

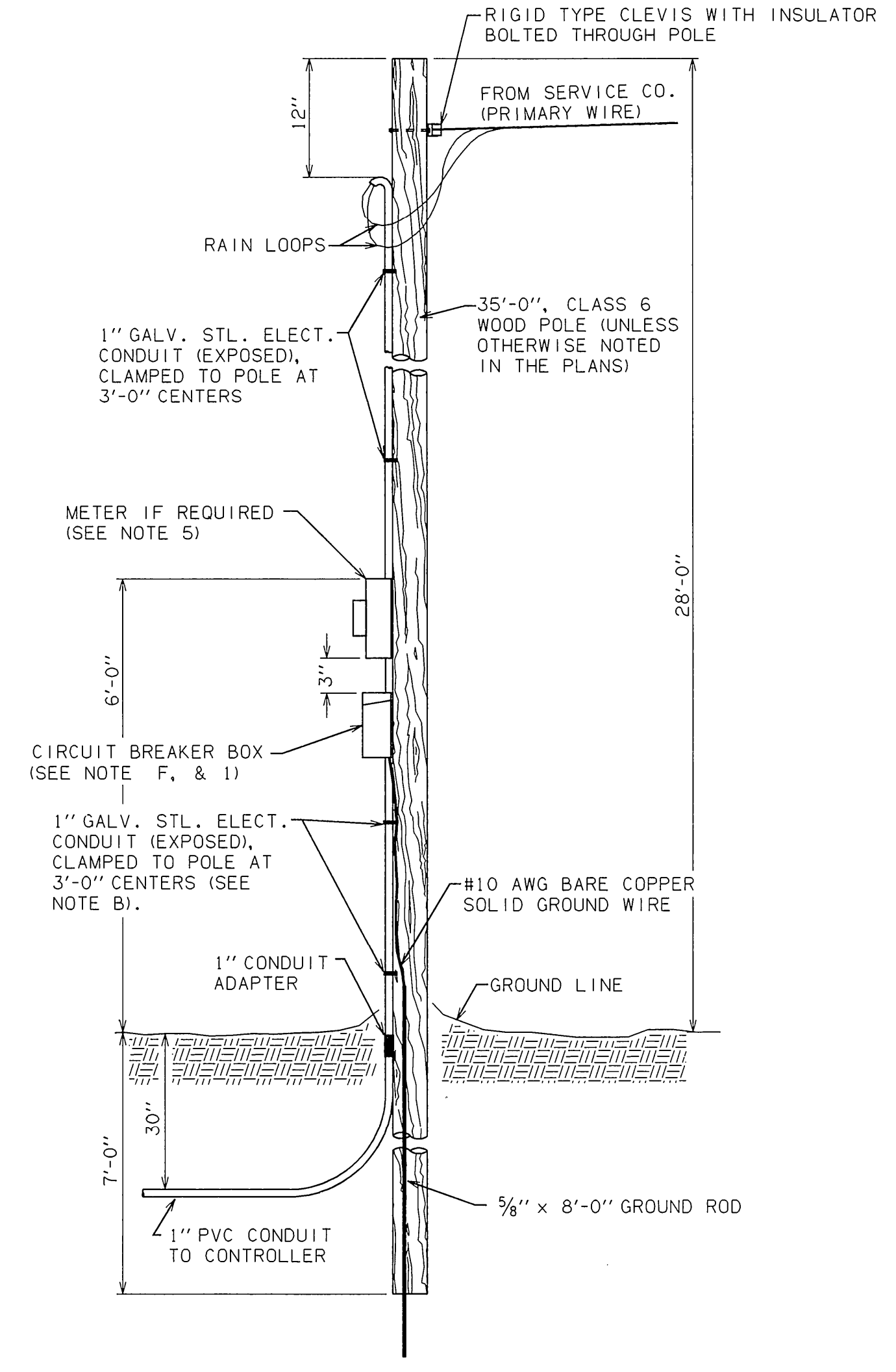
- A. ELECTRICAL CONDUIT SHALL BE IN ACCORDANCE WITH SECTION 802 OF THE STANDARD SPECIFICATIONS.
- B. 1/2 NO. 6 AWG ELECTRICAL CONDUCTOR SHALL BE USED TO SUPPLY POWER FROM THE POWER SOURCE(S) TO THE CONTROLLER.
- C. ALL CONDUIT CLAMPS SHALL BE GALVANIZED MALLEABLE IRON AND STRAPS SHALL BE 3/4" STAINLESS STEEL BAND.
- D. THE SERVICE POLE SHALL BE TREATED FULL LENGTH IN ACCORDANCE WITH AMERICAN WOOD PRESERVERS ASSOCIATION SPECIFICATIONS, TO BE AT LEAST 7.5 LBS. PER CUBIC FOOT RETENTION OF CREOSOTE OR 0.38 PENTACHLOROPHENOL MEASURED BY THE EMPTY CELL PROCESS. WOOD POLES SHALL COMPLY WITH THE LATEST REVISIONS OF ANSI STANDARD 05.1.
- E. ALL CONDUIT AND CONDUIT FITTINGS SHALL CONFORM TO SECTION 709 OF THE STANDARD SPECIFICATIONS.
- F. THE ENCLOSURE FOR THE CIRCUIT BREAKER SHALL BE A N.E.M.A. 3R RAINTIGHT ENCLOSURE, AND SHALL BE LOCKED IN ACCORDANCE WITH THE POWER COMPANY REQUIREMENTS. THE BREAKERS SHALL BE SIZED FOR LOAD REQUIREMENTS.

GENERAL NOTES

- 1. SERVICE POLE:
PRIMARY SERVICE SHALL BE FURNISHED TO A SERVICE POLE OR TO A TRAFFIC SIGNAL POLE. THE INSTALLATION SHALL INCLUDE GROUND ROD, METER BASE, INSULATORS, CABLES, CONDUIT, SERVICE HEAD, SERVICE BRACKET, CIRCUIT BREAKERS, AND ALL OTHER ITEMS NECESSARY TO COMPLETE THE WORK. WHEN ONLY A TRAFFIC SIGNAL SYSTEM IS INSTALLED ON A PROJECT, A SINGLE CIRCUIT BREAKER SHALL BE FURNISHED. WHERE TRAFFIC SIGNALS AND STREET LIGHT SYSTEMS ARE COMBINED ON ONE PROJECT, TWO CIRCUIT BREAKERS SHALL BE FURNISHED, ONE FOR EACH SYSTEM. THE CONTRACTOR SHALL COORDINATE WITH THE POWER COMPANY TO GET THE CONNECTION AT THE PROPER TIME.
THE EQUIPMENT, CONSTRUCTION AND INSTALLATION ON THE SERVICE POLE, AND SERVICE SHALL BE SUBJECT TO THE APPROVAL OF THE POWER COMPANY. THE COST OF MATERIALS AND INSTALLATION OF THE SERVICE POLE, AS DESCRIBED ABOVE, INCLUDING ANY PERMITS OR CHARGES BY THE POWER COMPANY FOR THE CONNECTION SHALL BE INCLUDED IN THE PRICE BID FOR OTHER ITEMS OF WORK.
- 2. ON PROJECTS WHERE SERVICE POLES ARE INSTALLED THE SERVICE POLE SHALL BE INSTALLED AS CLOSE TO THE RIGHT-OF-WAY AS POSSIBLE. LOCATION SHALL BE APPROVED BY THE ENGINEER PRIOR TO CONSTRUCTION.
- 3. INSTALL A CONDUIT COUPLING ADAPTOR, OR COMPRESSION COUPLING IF NECESSARY TO CONNECT CONDUITS OF DISSIMILAR MATERIALS.
- 4. THE PRIMARY WIRING SHALL BE PROVIDED BY THE LOCAL UTILITY CO., UNLESS OTHERWISE SPECIFIED.
- 5. THE CONTRACTOR SHALL INSTALL THE REQUIRED METERING EQUIPMENT FURNISHED BY THE LOCAL UTILITY CO., UNLESS OTHERWISE SPECIFIED.



OVERHEAD SERVICE TO TRAFFIC SIGNAL POLE



OVERHEAD SERVICE TO SERVICE POLE

APPROVED BY TRAFFIC ENGINEER <i>Howard Shuck</i>	DATE <i>10-1-99</i>
OKLAHOMA DEPT. OF TRANSPORTATION TRAFFIC STANDARD (ENGLISH)	
TRAFFIC SIGNAL SERVICE POLE	
1999 SPECIFICATIONS	TSSP1-1 OOE T-435E