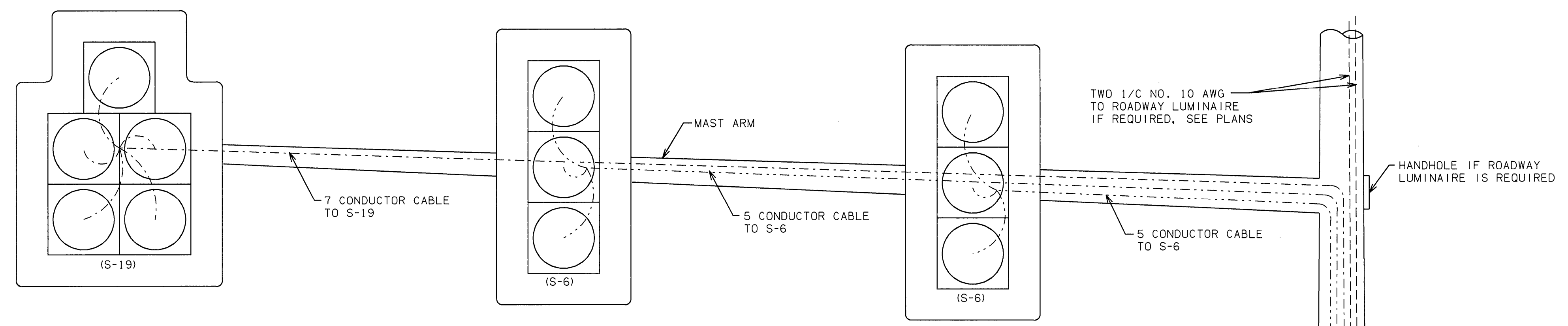
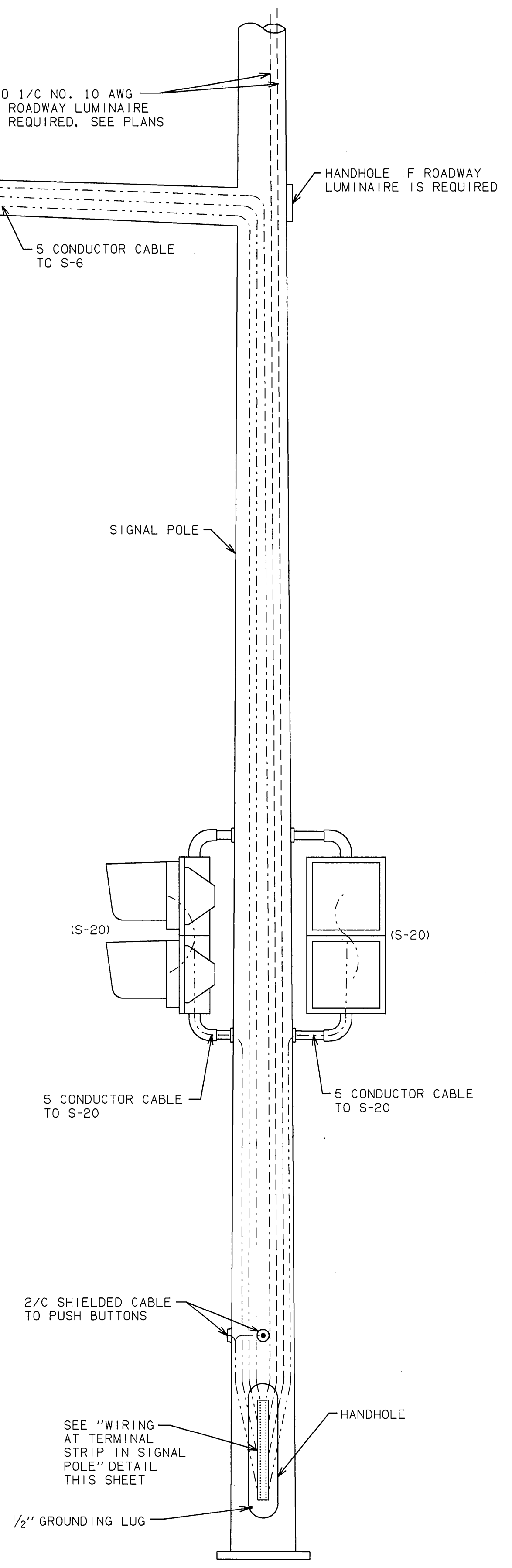
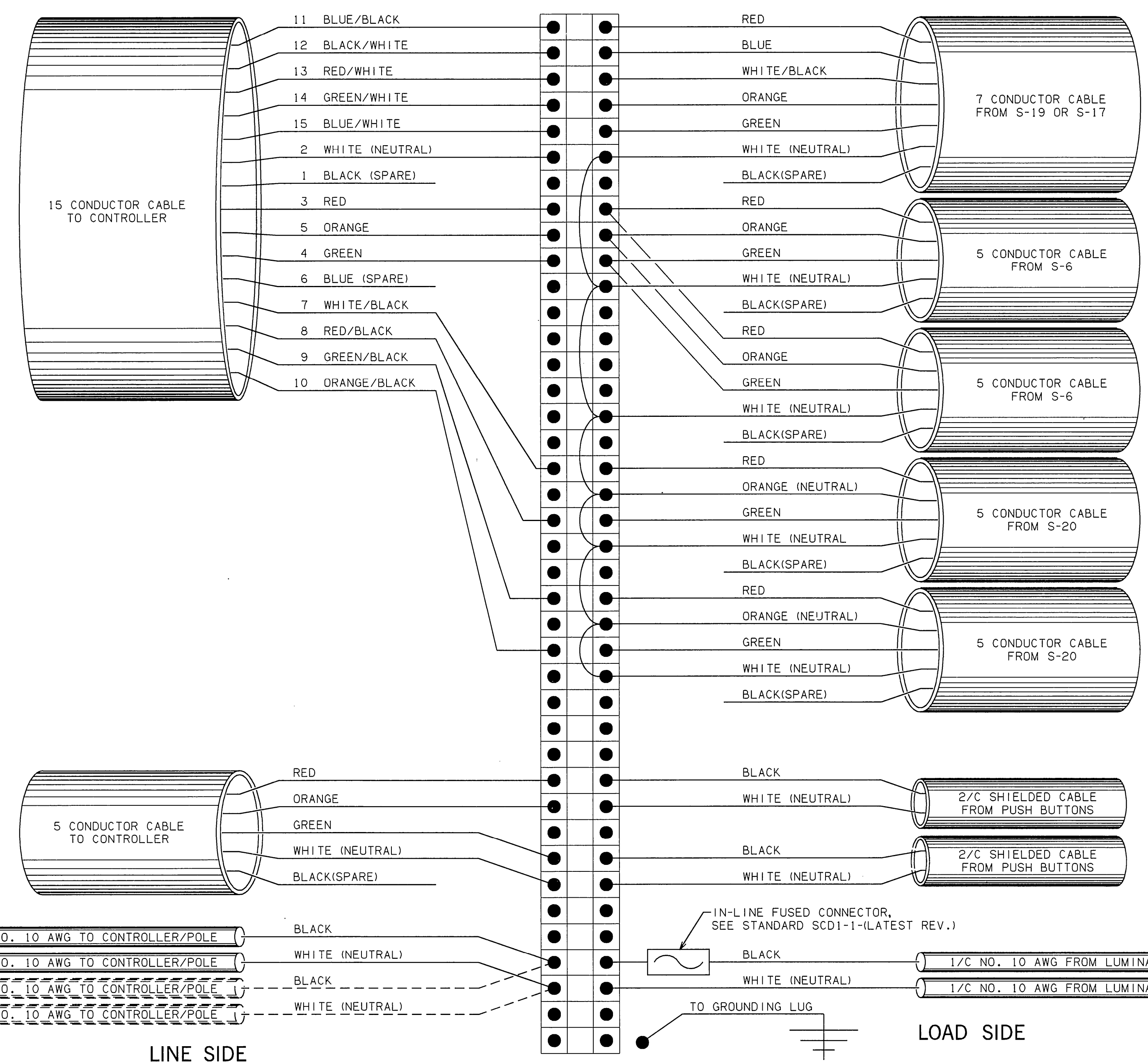


DESCRIPTION	REVISIONS	DATE
-------------	-----------	------



GENERAL NOTES

1. ALL ELECTRICAL CONNECTIONS IN THE SIGNAL POLE BASE, CONTROLLER CABINET AND SIGNAL HEADS SHALL BE MADE WITH "BURNDY HYLUG" OR AN APPROVED EQUAL.
2. LUMINAIRE ELECTRICAL CONDUCTORS TO BE INSTALLED IN TRAFFIC SIGNAL POLES AND FROM THE CONTROLLER TO EACH TRAFFIC SIGNAL POLE, SHALL BE SOLID COPPER TYPE THW OR THWN 75 DEGREE CELSIUS 600 VOLT. AN ALTERNATE TYPE OF INSULATION MAY BE USED IF APPROVED BY THE RESIDENT ENGINEER PRIOR TO INSTALLATION.
3. EACH TRAFFIC SIGNAL POLE SHALL BE GROUNDED TO THE GROUND ROD LOCATED IN THE FOOTING. NO. 10 AWG SOLID BARE COPPER WIRE SHALL BE CONNECTED FROM THE GROUND ROD TO THE GROUNDING LUG AT THE BASE OF THE POLE. SEE SCD1-1 (LATEST REVISION).



TRAFFIC SIGNAL ELECTRIC CABLE SEQUENCE

CONDUCTOR NUMBER	BASE / TRACER COLOR	CABLE SIZE						
		2C	5C	7C	9C	12C	15C	18C
1	BLACK							
2	WHITE							
3	RED							
4	GREEN							
5	ORANGE							
6	BLUE							
7	WHITE/BLACK							
8	RED/BLACK							
9	GREEN/BLACK							
10	ORANGE/BLACK							
11	BLUE/BLACK							
12	BLACK/WHITE							
13	RED/WHITE							
14	GREEN/WHITE							
15	BLUE/WHITE							
16	BLACK/RED							
17	WHITE/RED							
18	ORANGE/RED							
19	BLUE/RED							
20	RED/GREEN							
21	ORANGE/GREEN							

APPROVED BY TRAFFIC ENGINEER *David Small* DATE 10-1-99  
**OKLAHOMA DEPT. OF TRANSPORTATION**  
**TRAFFIC STANDARD (ENGLISH)**  
**POLE WIRING DETAILS**

TRFPC31 01/09/99 11:20:28 AM 10/7/99