

DESCRIPTION	REVISIONS	DATE

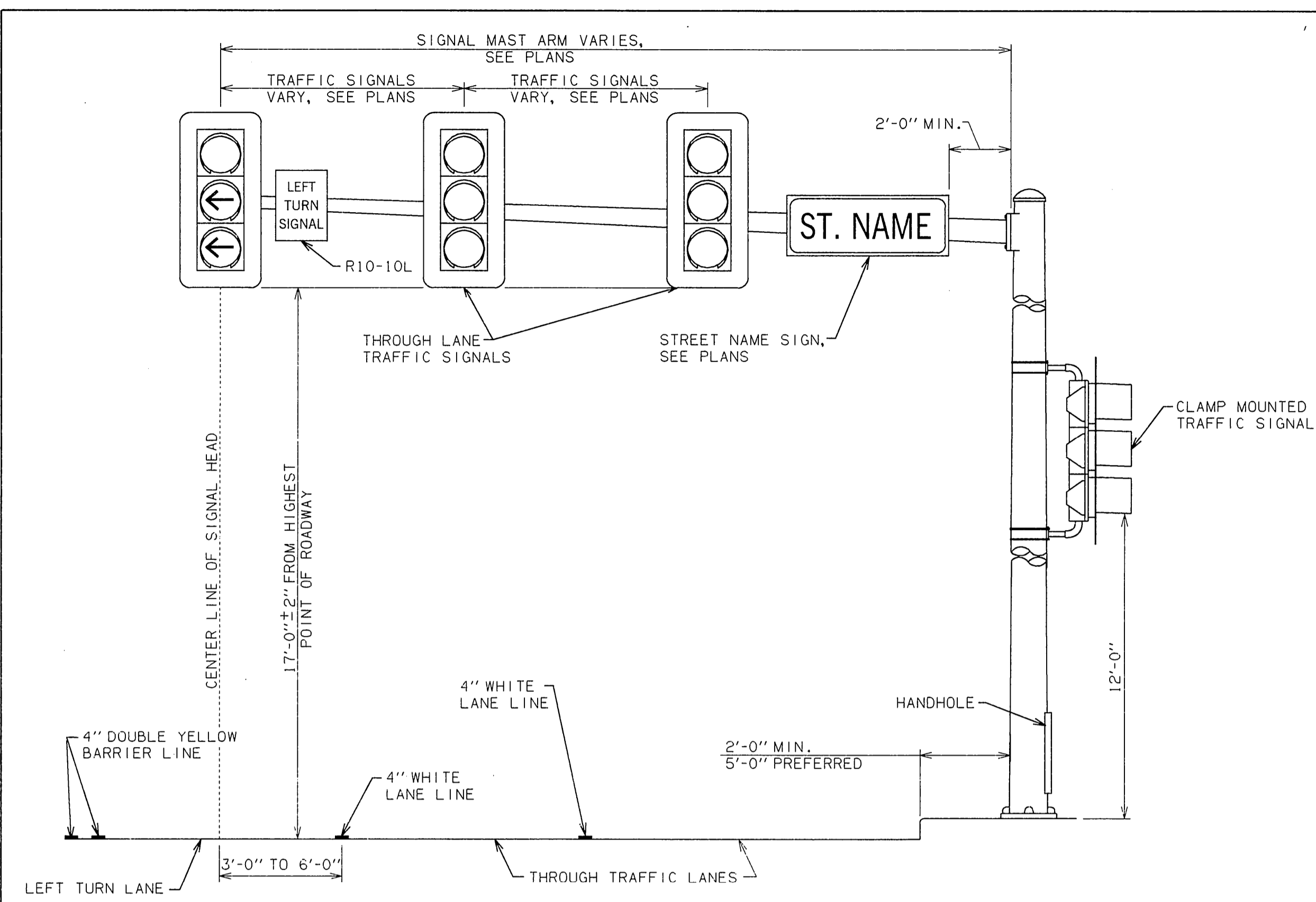
MATERIAL SPECIFICATION

- A. THE SQUARE PEDESTAL BASE SHALL BE AN FHWA APPROVED, CAST ALUMINUM BASE INCLUDING A PLASTIC DOOR, GROUNDING LUG, AND CAST ALUMINUM BASE COLLAR.
- B. ANCHOR BOLTS FOR PEDESTAL POLES SHALL BE ASTM A-572 OR A-36, MODIFIED TO 50,000 PSI YIELD STRENGTH WITH A HEAVY DUTY FLAT WASHER, HEAVY DUTY LOCK WASHER AND HEAVY DUTY HEX NUT, ALL GALVANIZED AS PER ASTM A-153.

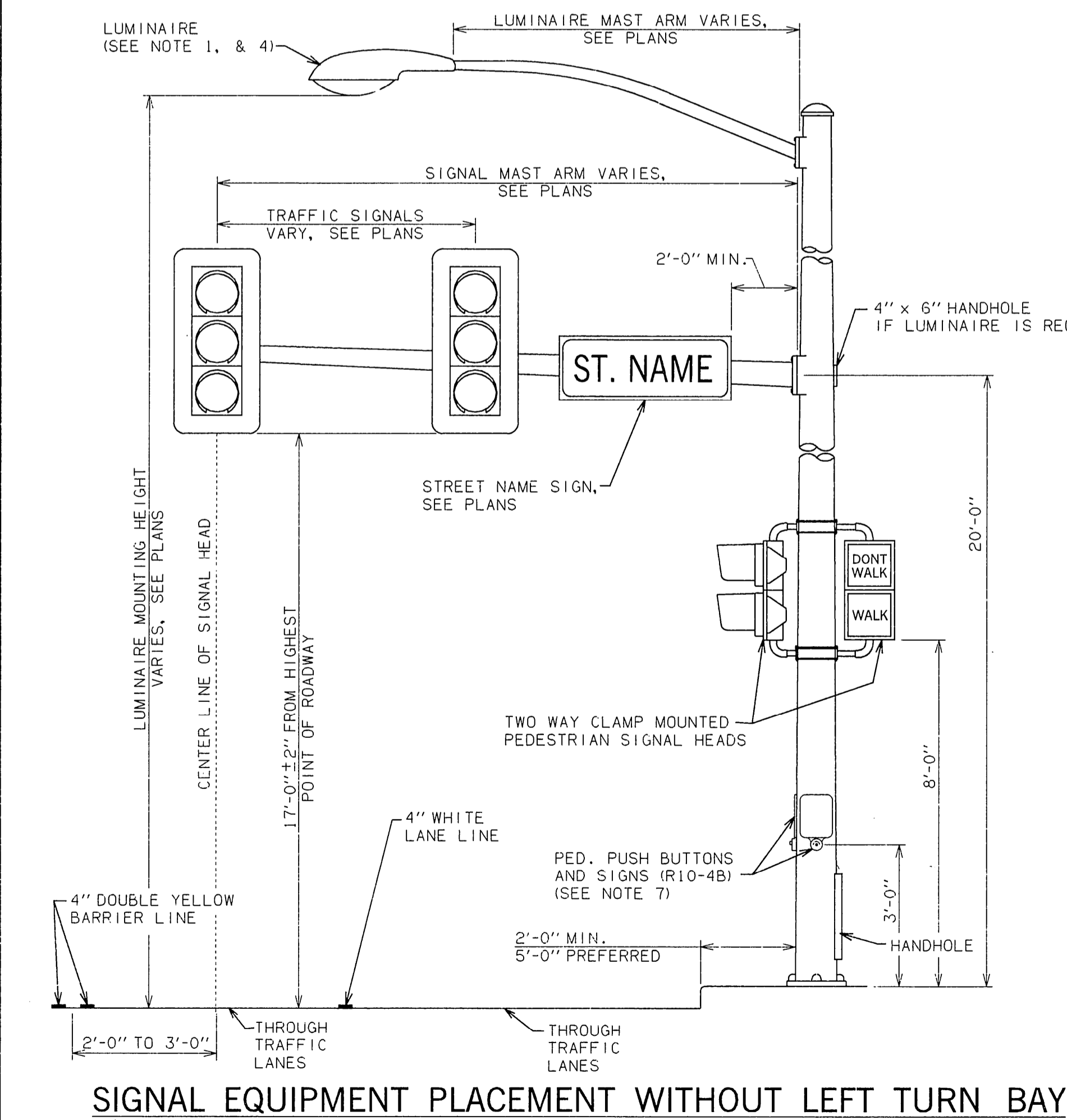
GENERAL NOTES

1. LUMINAIRE SHALL BE 250 WATT HIGH PRESSURE SODIUM, WITH CLEAR LAMP OF 27,500 LUMENS, ILLUMINATION ENGINEERING SOCIETY DISTRIBUTION AS FOLLOWS: VERTICAL = MEDIUM; LATERAL = TYPE 3; CONTROL = SEMICUTOFF; ODOT FIXTURE STYLE = A1. SEE STANDARD SCD1-1-(LATEST REV.)
2. POLES SHALL BE SELECTED FROM THE PREAPPROVED SHOP DRAWINGS OF POLES WHICH HAVE BEEN STANDARDIZED FOR MAXIMUM LOADING.
3. EACH TRAFFIC SIGNAL POLE SHALL BE GROUNDED TO A GROUND ROD LOCATED IN FOUNDATION. NO. 10 AWG SOLID BARE COPPER WIRE SHALL BE INSTALLED FROM GROUND ROD TO POLE GROUNDING LUG. SEE STANDARD SCD1-1-(LATEST REV.)
4. THE CONTRACTOR SHALL SUPPLY EACH LUMINAIRE WITH A PHOTO-ELECTRIC CELL. A SUITABLE GROUNDING CONNECTION SHALL BE MADE AT EACH POLE BASE AND AT THE CONTROLLER CABINET. THE COST OF SUPPLYING ALL PHOTO CELLS, FUSES, ETC... SHALL BE INCLUDED IN THE UNIT PRICE BID FOR THIS ITEM OF WORK.
5. ALL ELECTRICAL CONNECTIONS IN THE SIGNAL POLE BASE AND SIGNAL HEADS SHALL BE MADE WITH "BURNDY HYLUG" OR AN APPROVED EQUAL.
6. ACCORDING TO POLE SPECIFICATION 806 THE SPACE BETWEEN THE POLE BASE PLATE AND THE FOUNDATION SHALL BE FILLED WITH NONSHRINK GROUT. A 1/2" DRAIN HOLE SHALL BE PLACED IN THE GROUT AT A LOCATION TO DRAIN ANY MOISTURE THAT MAY ACCUMULATE INSIDE THE POLE.

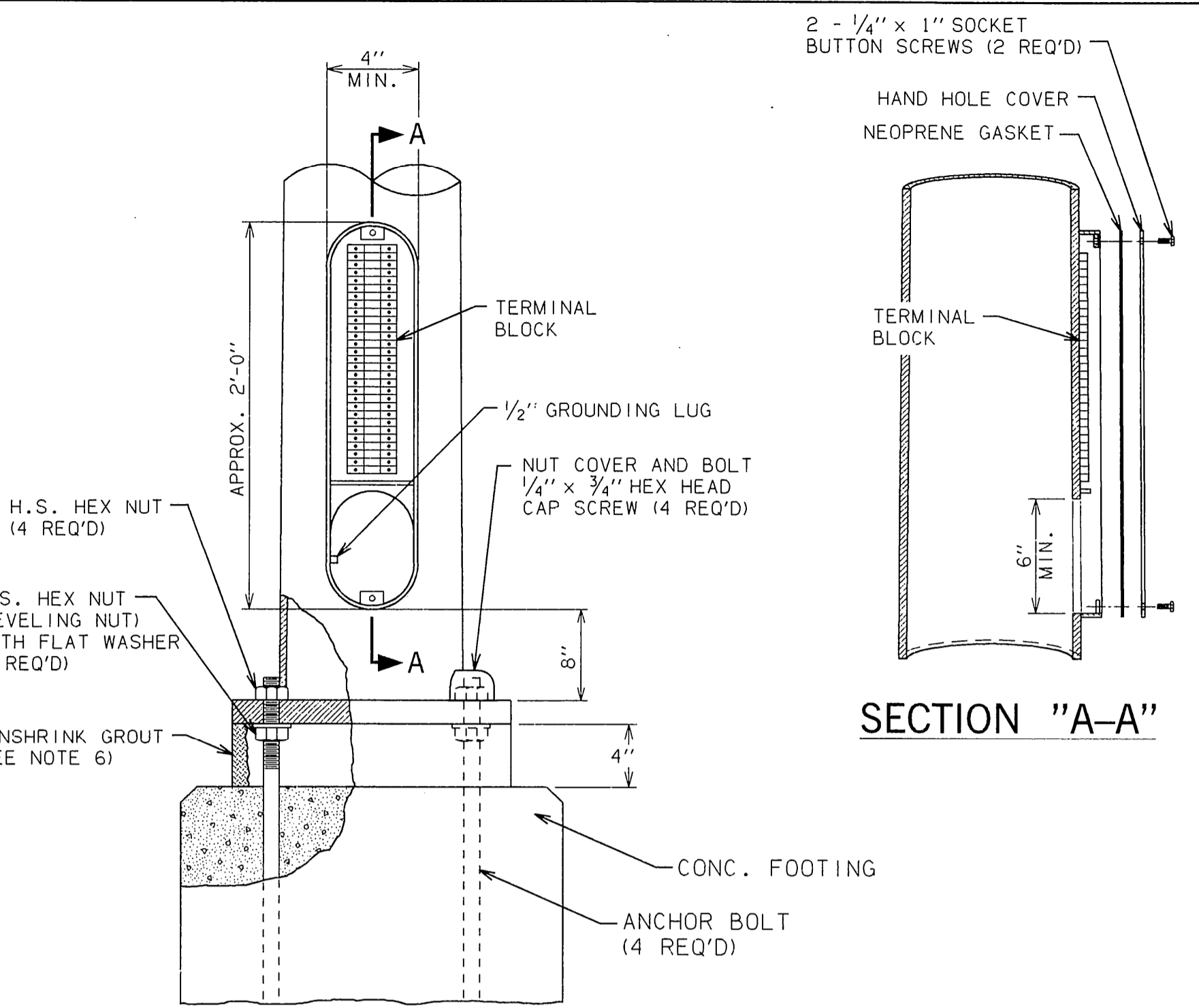
IN LIEU OF THE NONSHRINK GROUT, A HEAVY GAUGE GALVANIZED SHEET STEEL FORMED TO FIT THE HOLE INSIDE THE BASE PLATE AND OF SUFFICIENT WIDTH TO ENCLOSE THE VOID BETWEEN THE BASE PLATE AND FOUNDATION TO BE INSTALLED. THE SHEET STEEL SHALL BE FASTENED IN PLACE IN SUCH A MANNER AS TO PREVENT ENTRY BY EITHER RODENTS OR VANDALS.
7. ALL PEDESTRIAN PUSH BUTTONS SHALL BE ADA COMPLIANT. PUSH BUTTONS SHALL BE ADJACENT TO THE SIDEWALK, OR AS DIRECTED BY THE ENGINEER.



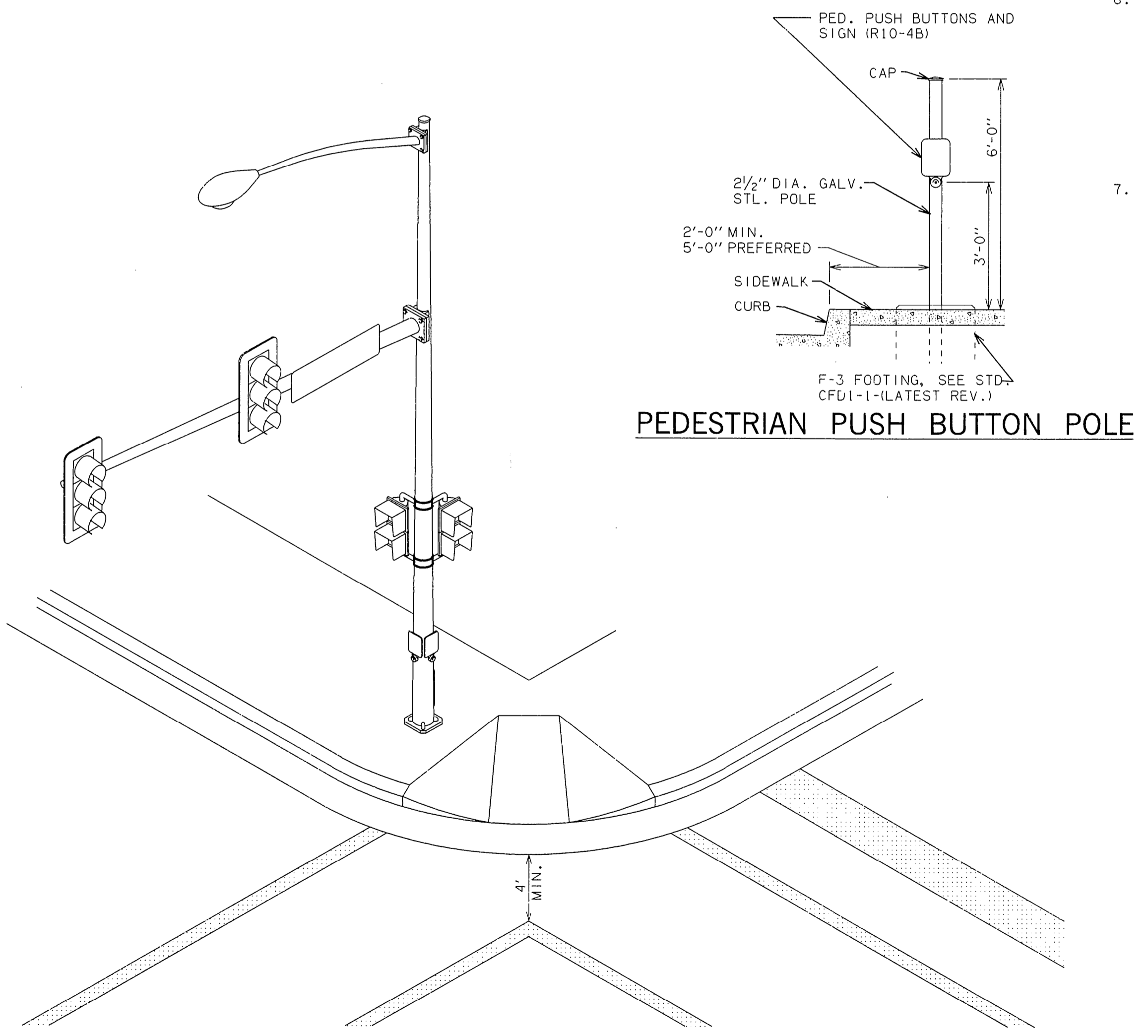
SIGNAL EQUIPMENT PLACEMENT WITH LEFT TURN BAY



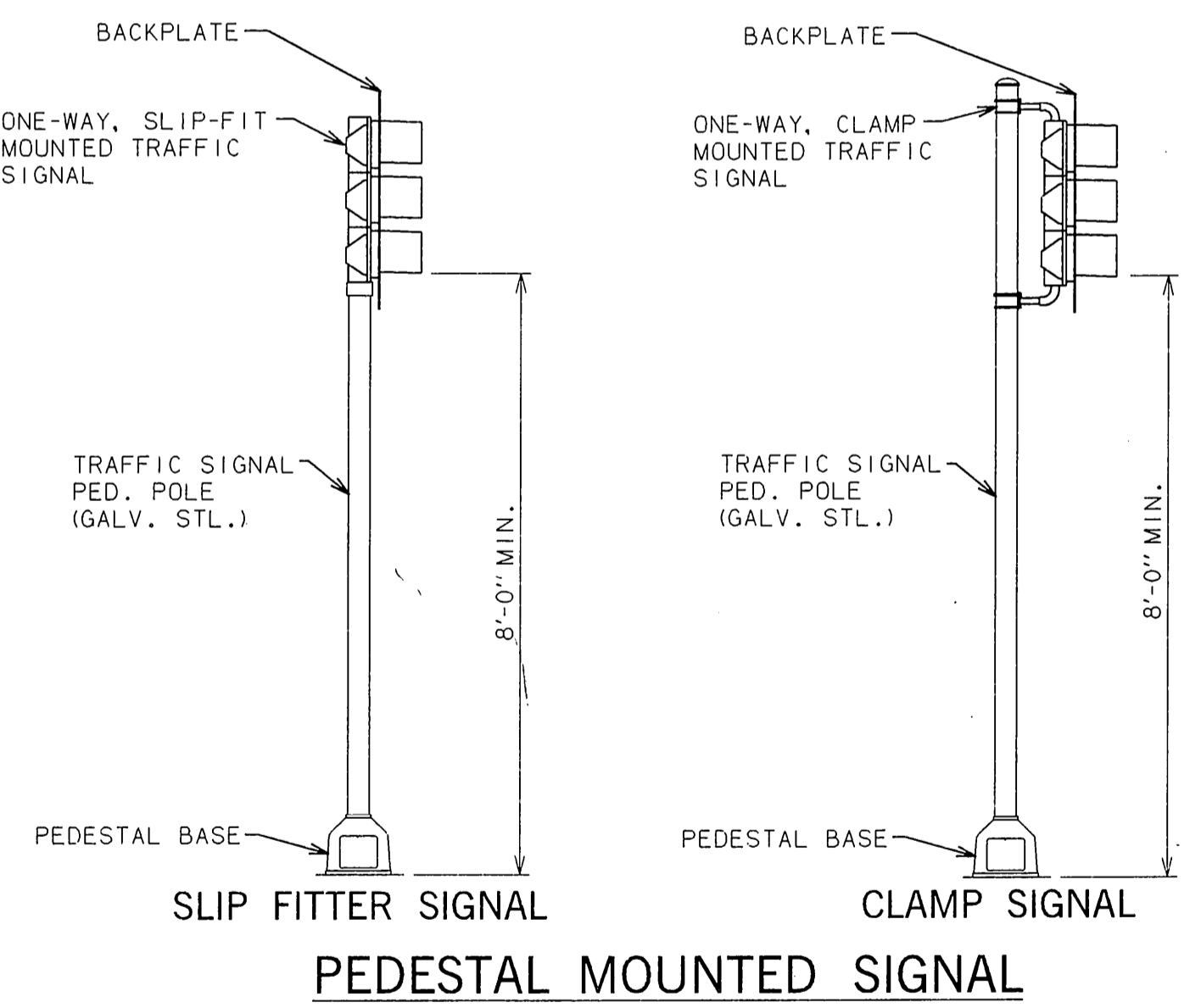
SIGNAL EQUIPMENT PLACEMENT WITHOUT LEFT TURN BAY



POLE BASE & HANDHOLE DETAILS



SIGNAL POLE PLACEMENT FOR PEDESTRIAN CROSSWALKS



PEDESTAL MOUNTED SIGNAL

APPROVED BY TRAFFIC ENGINEER <i>Husein Smah</i>	DATE 10-1-99
OKLAHOMA DEPT. OF TRANSPORTATION TRAFFIC STANDARD (ENGLISH)	
PEDESTAL AND MAST ARM POLE DETAILS	
1999 SPECIFICATIONS	PMAP1-1 OOE
T-401E	

TRFPC31.ctb (user: hdd, sign: hdd) 1/9/99, 10:11:26 AM 10/7/99