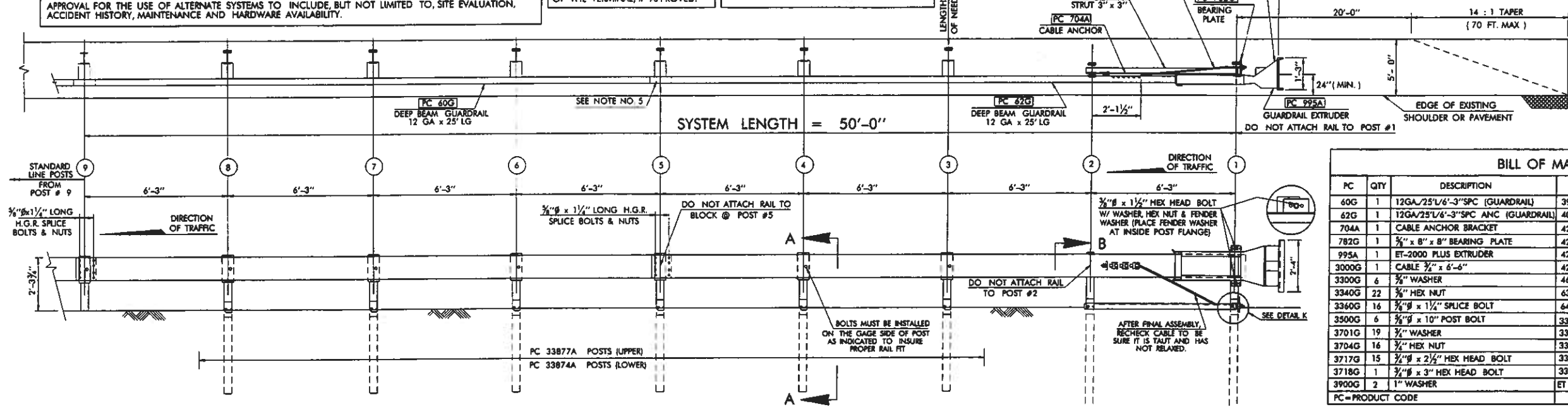


NOTE: THE CONTRACTOR MAY SUBMIT FOR APPROVAL & USE AN EQUIVALENT 4 OR 8 TUBE G.E.T. TYPE END TREATMENT, SUCH AS THE SKT-350 (SEQUENTIAL KINKING TERMINAL), OR OTHER 4 OR 8 TUBE SYSTEMS WHICH HAVE SUCCESSFULLY PASSED NCHRP 350 TEST LEVEL 3, ARE OF THE SAME OVERALL LENGTH, HAVE INTERCHANGEABLE COMPONENTS AND ARE DIMENSIONED AS SHOWN ON THIS STANDARD. APPROVAL FOR THE USE OF ALTERNATE SYSTEMS TO INCLUDE, BUT NOT LIMITED TO, SITE EVALUATION, ACCIDENT HISTORY, MAINTENANCE AND HARDWARE AVAILABILITY.

NOTE: WOOD OR RECYCLED COMPOSITE (PLASTIC) BLOCKOUTS MAY BE USED THROUGHOUT THE LENGTH OF THE TERMINAL, IF APPROVED.

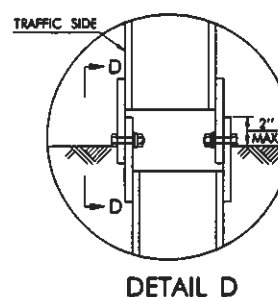
NOTE: INSTALL RAIL PARALLEL TO ROADWAY EDGE LINE. WHEN TAPER IS REQUIRED BY DESIGN ENGINEER, A 50:1 TAPER OVER THE LENGTH OF SYSTEM IS ALLOWABLE.

DESCRIPTION	REVISIONS	DATE
RE-ISSUE W/ENGLISH 1999 SPECS. Taper&Width For Guardrail Widening GET Alternatives Note	1	10/7/99
Rev. to HingBreakaway,Marker Shape	2	3/07

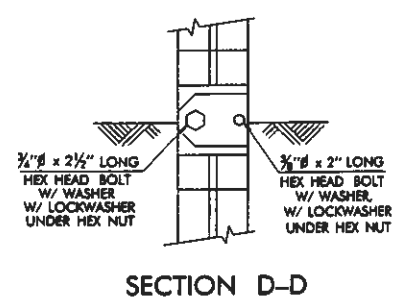


PC	QTY	DESCRIPTION	PC	QTY	DESCRIPTION
60G	1	12GA/25'L/6'-3"SPC (GUARDRAIL)	3910G	2	1" HEX NUT
42G	1	12GA/25'L/6'-3"SPC ANC (GUARDRAIL)	4076B	6	WD BLOCK 1'-2" x 6" x 8" DR
704A	1	CABLE ANCHOR BRACKET	4254G	18	3/4" WASHER
782G	1	3/4" x 8" x 8" BEARING PLATE	4255G	2	3/4" FENDER WASHER (1 1/2" OD)
995A	1	ET-2000 PLUS EXTRUDER	4258G	16	3/4" LOCKWASHER
3000G	1	CABLE 3/4" x 6'-6"	4261G	2	3/4" x 1 1/2" HEX HEAD BOLT
3300G	6	3/8" WASHER	4699G	16	3/4" LOCKWASHER
3340G	22	3/8" HEX NUT	6321G	16	3/4" x 2" HEX HEAD BOLT
3360G	16	3/4" x 1 1/2" SPUCE BOLT	6405G	18	3/4" HEX NUT
3500G	6	3/4" x 10" POST BOLT	33871A	1	ET2000 HBA POST #1 TOP
3701G	19	3/4" WASHER	33877A	7	ET2000 HBA POST #2-#8 TOP
3704G	16	3/4" HEX NUT	33873A	2	ET2000 HBA POST #1-#2 BOTTOM
3717G	15	3/4" x 2 1/2" HEX HEAD BOLT	33874A	6	ET2000 HBA POST #3-#8 BOTTOM
3718G	1	3/4" x 3" HEX HEAD BOLT	33875G	1	6'-6" x 3" x 3" ET HBA ANGLE STRUT
3900G	2	1" WASHER			ET HBA=EXTRUDER TERMINAL HINGED BREAK AWAY

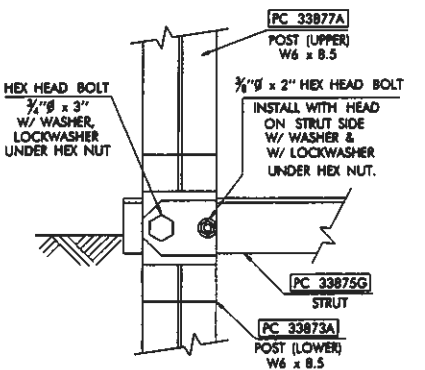
PC=PRODUCT CODE



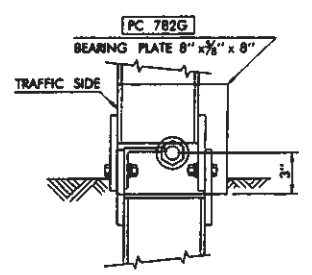
DETAIL D



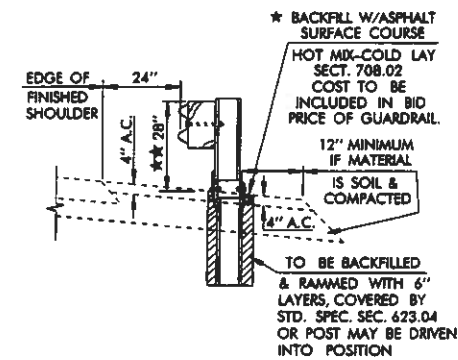
SECTION D-D



SECTION H-H



SECTION K-K

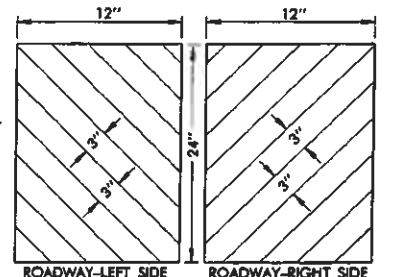


TYPICAL SECTION WIDENING FOR GUARDRAIL

★ SEE 1999 STD. SPECIFICATIONS-SEC. 405  
 ★★ MEASURE DIRECTLY BELOW RAIL GUARDRAIL TO BE INSTALLED TO THIS DIMENSION +1".  
 WHEN INSTALLING GUARDRAIL IN AN AREA WITH NO SHOULDER WIDENING, THE RAIL HEIGHT SHALL BE MEASURED AS FOLLOWS:  
 FOR NEGATIVE GRADE SHOULDERS, MEASURE TO A LINE FROM THE SHOULDER ON THE SAME SLOPE AS THE SHOULDER.  
 FOR POSITIVE GRADE & LEVEL SHOULDERS, MEASURE FROM A LINE LEVEL WITH THE EDGE OF SHOULDER.

REFLECTIVE MARKER

1. REFLECTORIZED MARKER(S) SHOULD BE ATTACHED TO THE VERTICAL END (12" x 24" FACE - TYP.) OF THE G.E.T. PRIOR TO INSTALLATION.
2. ATTACHMENT SURFACE SHOULD BE THOROUGHLY CLEANED & DRY BEFORE ATTACHING ADHESIVE MARKER (STICK-ON SHEETING).
3. ATTACHED ADHESIVE SHEETING SHOULD BE FREE OF AIR BUBBLES WITH ALL EDGES FIRMLY BONDED.
4. REFLECTORIZED MARKER(S) WITH ALTERNATE DIMENSIONS MAY BE USED, IF APPROVED BY THE ENGINEER.
5. STRIPING PATTERN MAY CONSIST OF 3" OR 4" STRIPES.



DETAIL C REFLECTIVE MARKER

GENERAL NOTES

1. ALL CONSTRUCTION AND MATERIAL REQUIREMENTS SHALL BE IN ACCORDANCE WITH THE 1999 ENGLISH STANDARD SPECIFICATIONS.
2. DO NOT ATTACH RAIL TO BLOCK OR POST AT SPICED JOINTS.
3. ONLY 25'-0" W-BEAM GUARDRAIL PANELS MAY BE USED FOR THIS DESIGN BETWEEN POST 1 & POST 5. STANDARD 12'-6" PANELS MAY BE USED BETWEEN POST 5 & POST 9, IF APPROVED BY THE ENGINEER.
4. THE 3/4" FLAT WASHER IS USED UNDER THE NUT BEHIND THE POST ONLY. NO WASHER IS USED ON THE TRAFFIC SIDE OF GUARDRAIL.
5. WHEN THE GUARDRAIL EXTRUDER TERMINAL IS SPECIFIED AS THE END TREATMENT FOR THE MBGF INSTALLATION, THE MBGF WILL BE TAPERED AT A RATE OF 50 TO 1, OVER THE 50' LENGTH OF THE G.E.T. SYSTEM, TO PREVENT THE EXTRUDER HEAD FROM ENCRDACHING ON THE SHOULDER. THE TAPER MAY BE DECREASED OR ELIMINATED FOR SPECIFIC INSTALLATIONS, IF DIRECTED BY THE ENGINEER. A 25 TO 1 TAPER RATE WILL BE USED AT CURB SECTIONS, BEGINNING AT POST NUMBER FIVE AND ENDING AT POST NUMBER ONE (RECOMMENDED FOR CURBED SECTIONS NO GREATER THAN 4" IN HEIGHT). (MBGF=METAL BEAM GUARD FENCE)
6. EXTRUDER TYPE TERMINALS SHALL NOT BE INSTALLED WHEN ADJACENT DRIVING LANES ARE WITHIN 25 FEET (HORIZONTAL) OF EXTRUSION SIDE OF THE EXTRUDER TERMINAL.

BASIS OF PAYMENT

ITEM NO.	ITEM	UNIT
623.06(H)	GUARDRAIL EXTRUDER TERMINAL END SECTION	EACH

APPROVED BY ROADWAY ENGINEER *Timothy A. Nagler* DATE 3/1/07

OKLAHOMA DEPT. OF TRANSPORTATION  
 ROADWAY STANDARD (ENGLISH)  
 GUARDRAIL EXTRUDER TERMINAL  
 END SECTION