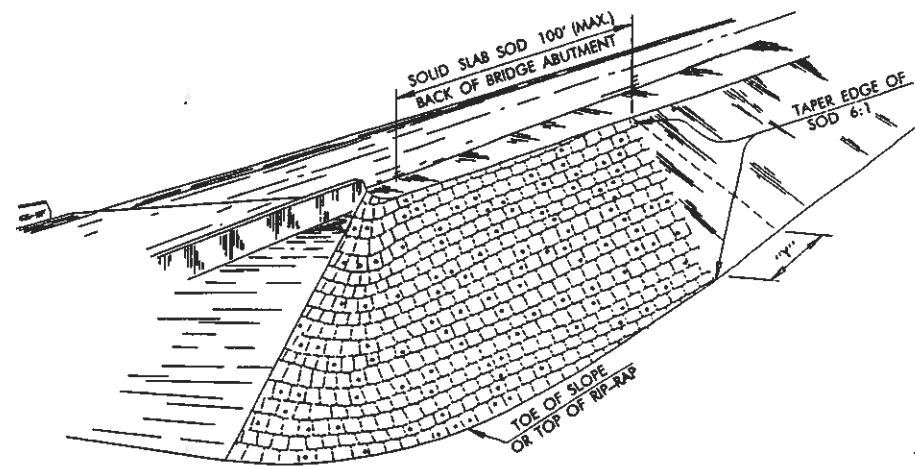
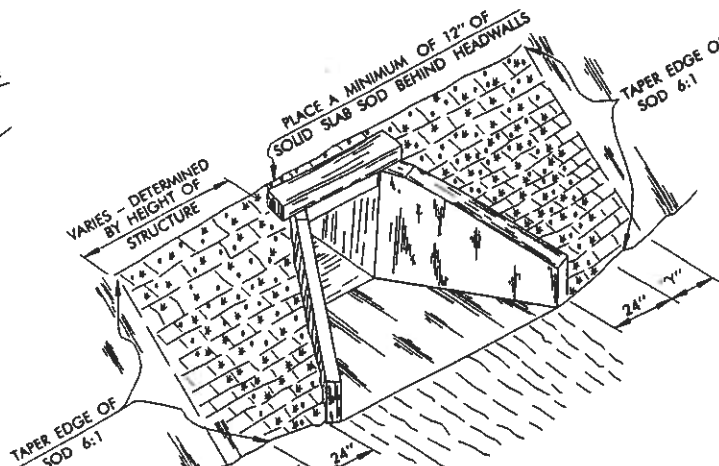


DESCRIPTION	REVISIONS	DATE
RE-ISSUE W/ENGLISH 1999 SPECS.		7/99
Amend. Excelsior Mat BOP Item No.	1pc	8/00

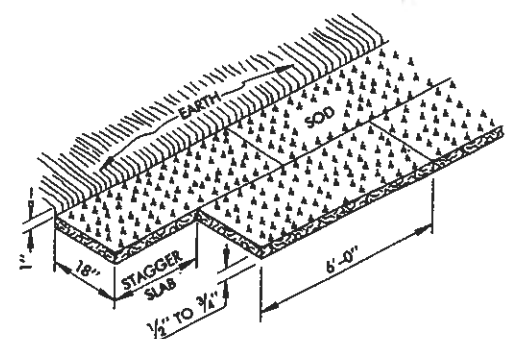


TYPICAL PLACEMENT OF SOLID SLAB SODDING ON FILL SLOPES, APPROACHES TO OVERPASSES AND BRIDGES.

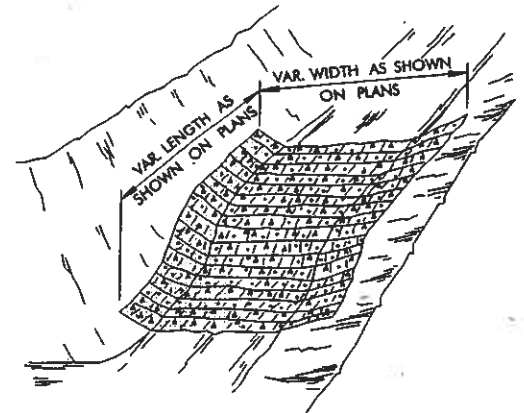


TAPER NOTE
"Y" DIMENSION =
SLOPE LENGTH x 0.17

TYPICAL PLACEMENT OF SOLID SLAB SODDING AT STRUCTURE HEADWALLS

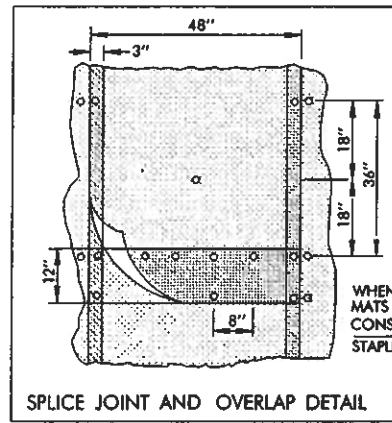


SOLID SLAB SOD
(MARCH 1 THRU AUGUST 31)

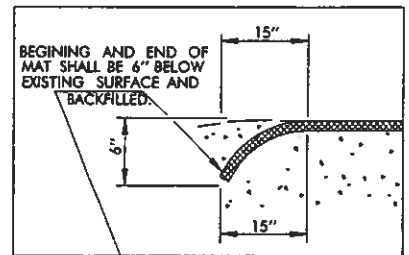


TYPICAL PLACEMENT OF SOLID SLAB SOD IN DITCHES

SOLID SLAB SODDING

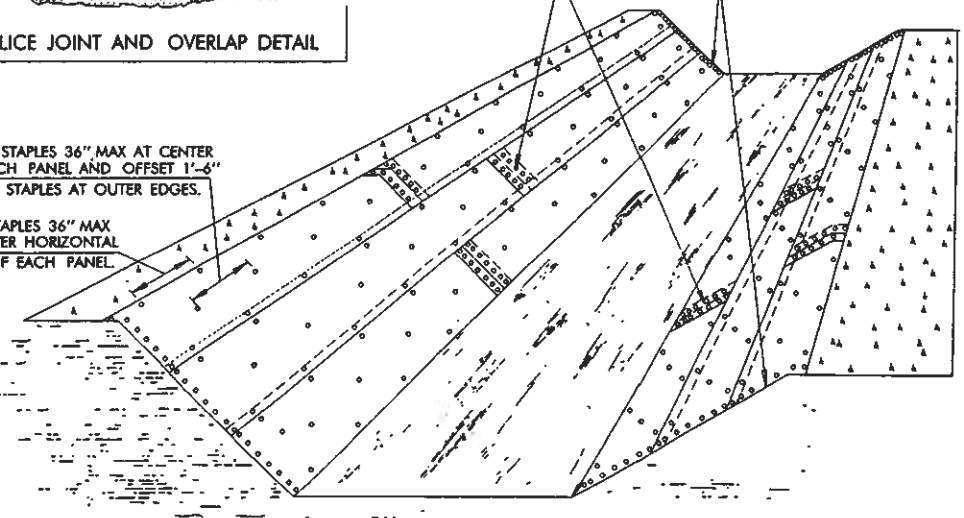


SPLICE JOINT AND OVERLAP DETAIL



BEGINNING AND END OF MAT SHALL BE 6" BELOW EXISTING SURFACE AND BACKFILLED.

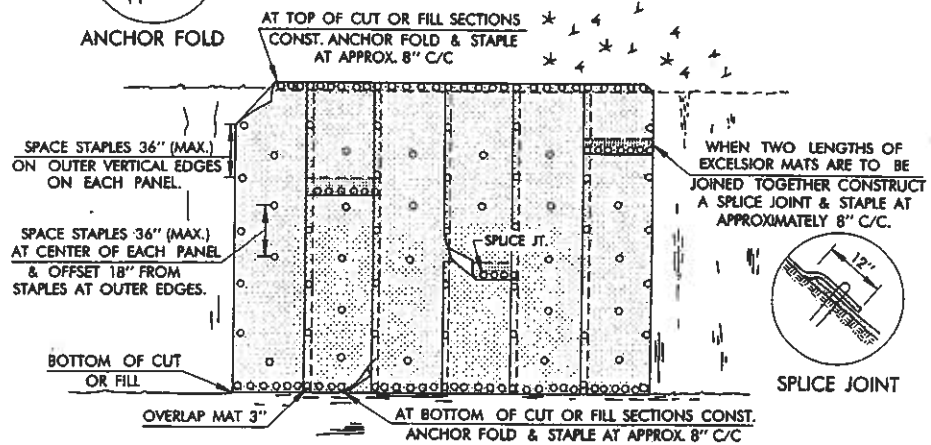
SPACE STAPLES 36" MAX AT CENTER OF EACH PANEL AND OFFSET 1'-6" FROM STAPLES AT OUTER EDGES.
SPACE STAPLES 36" MAX ON OUTER HORIZONTAL EDGES OF EACH PANEL.



EXCELSIOR MAT
CHANNEL PLACEMENT



ANCHOR FOLD



EXCELSIOR MAT
BACKSLOPE AND FILLSLOPE PLACEMENT

GENERAL NOTES

1. ALL CONSTRUCTION AND MATERIAL REQUIREMENTS SHALL BE IN ACCORDANCE WITH THE 1999 ENGLISH STANDARD SPECIFICATIONS.
2. SOLID SLAB SOD SHALL BE PLACED IN HORIZONTAL ROWS WITH THE LONGEST SIDE OF EACH SLAB RUNNING PARALLEL TO THE DIRECTION OF THE ROW AND THE SLABS IN ALTERNATE ROWS STAGGERED HALF THE LENGTH OF EACH INDIVIDUAL SLAB.
3. SLABS SHALL BE CUT AND HARVESTED WITH A COMMERCIAL SOD CUTTER TO THE DIMENSIONS SHOWN, THEN LOADED, TRANSPORTED AND HANDLED ON PALLETS.
4. AFTER PLACEMENT OF SOLID SLAB SOD, EARTH AT THE OUTER EDGES OF THE PLACEMENT SHALL BE BACKFILLED AND LOOSELY COMPACTED TO AT LEAST 1" ABOVE THE TOP OF THE SOLID SLAB SODDING.
5. SEE ROADWAY STANDARD ECM1-2 FOR ADDITIONAL DETAILS.

BASIS OF PAYMENT		
ITEM NO.	ITEM	UNIT
230.06(A)	SOLID SLAB SODDING	S.Y.
233.06(E)	EXCELSIOR MAT	S.Y.

APPROVED BY ROADWAY ENGINEER *C.M. Samborski* DATE 8/15/00

OKLAHOMA DEPT. OF TRANSPORTATION
ROADWAY STANDARD (ENGLISH)
EROSION CONTROL MATS
1999 SPECIFICATIONS (SOD / EXCELSIOR) ECM2-2 01E
R-128E