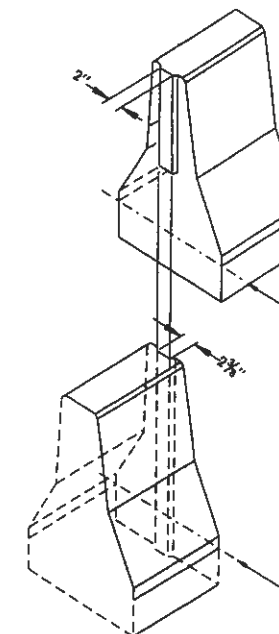
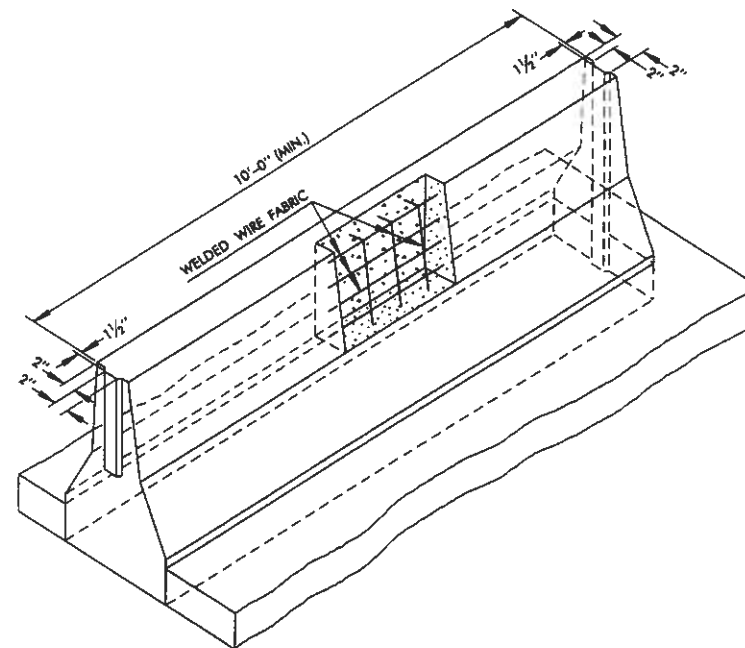
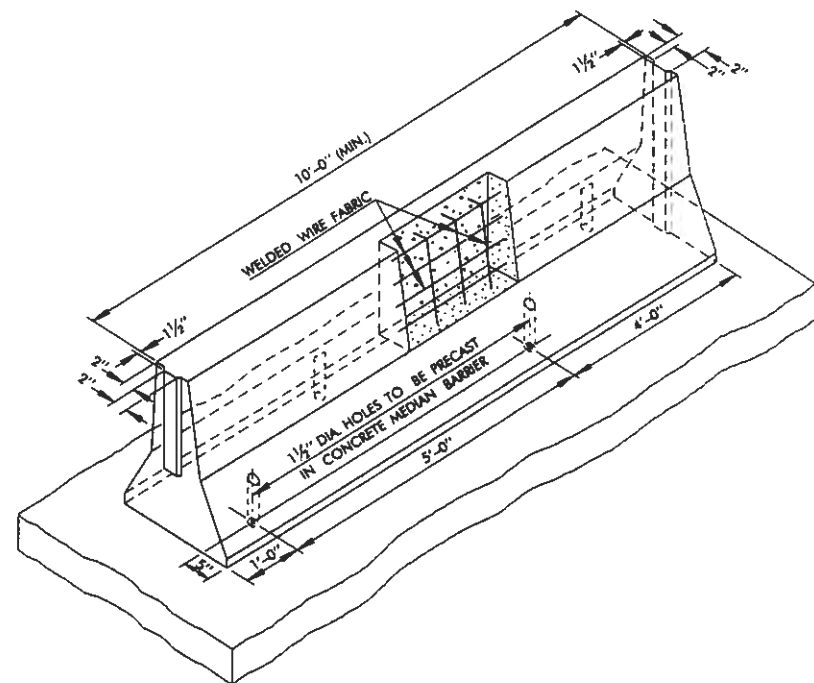
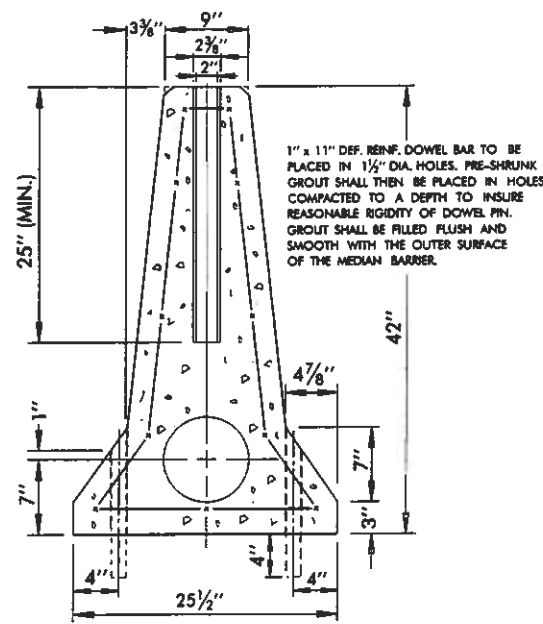


DESCRIPTION	REVISIONS	DATE
RE-ISSUE W/ENGLISH 1999 SPECS		7/99
Barrier Height & Shape, Dimensions	1pc	3/07

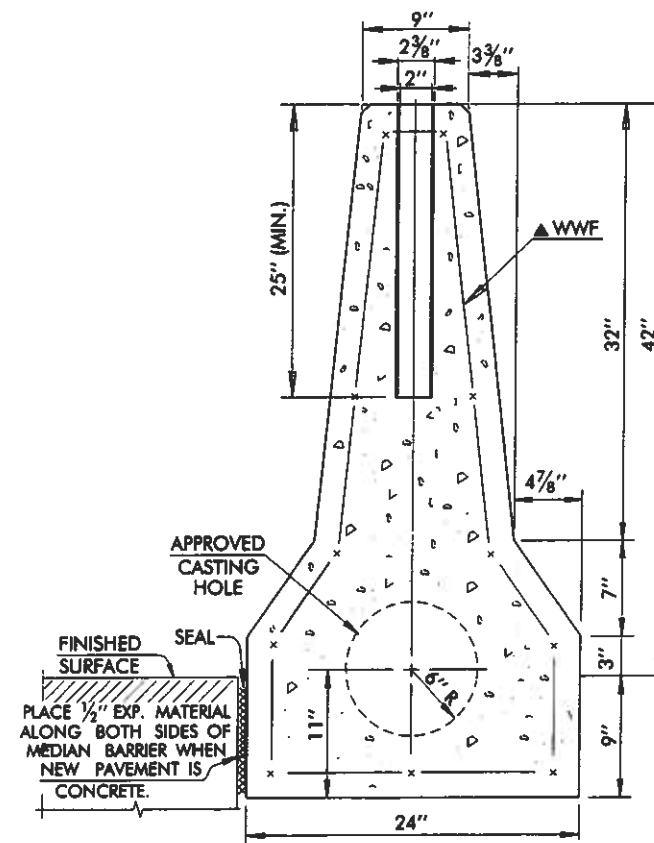


ASSEMBLY
(TYPICAL)



COST OF JOINT
PRECAST MEDIAN BARRIER - TYPE I
(FOR USE WITH EXISTING CONCRETE PAVEMENT)

NOTE: PRECAST HOLES FOR DOWEL PINS SHALL BE SPACED 5'-0" o/c ON ALTERNATE SIDES OF MEDIAN BARRIER SECTION.



PRECAST MEDIAN BARRIER - TYPE II
(FOR USE WITH NEW PAVEMENT CONSTRUCTION)

GENERAL NOTES

1. ALL CONSTRUCTION AND MATERIAL REQUIREMENTS SHALL BE IN ACCORDANCE WITH THE 1999 ENGLISH STANDARD SPECIFICATIONS.
2. WHEN JOINING TWO SECTIONS OF MEDIAN BARRIER, A COLD APPLIED MASTIC TYPE JOINT SEALER (SEC. 726.02C) SHALL BE APPLIED TO THE BOTTOM 17" ON BOTH ENDS OF BOTH JOINTS TO BE JOINED.
3. ALL EXPOSED LONGITUDINAL EDGES OF THE MEDIAN BARRIER SHALL BE ROUNDED WITH A 1" RADIUS.
4. COST OF JOINT FILLER & SEALER TO BE INCLUDED IN PRICE BID FOR MEDIAN BARRIER.
- ▲ 5. WOVEN WIRE FABRIC AS SHOWN MAY BE EITHER SMOOTH WIRE (AASHTO M55) OR DEFORMED WIRE (AASHTO M221), (6" x 6" / W2,9-W2,9 WWF).
6. TERMINATING END(S) OF PRECAST MEDIAN BARRIER RUNS SHALL BE PROTECTED BY AN APPROVED SAFETY END TREATMENT.

BASIS OF PAYMENT

ITEM NO.	ITEM	UNIT
627.06(A)	PRECAST CONCRETE MEDIAN BARRIER, TYPE I	L. F.
627.06(C)	PRECAST CONCRETE MEDIAN BARRIER, TYPE II	L. F.

APPROVED BY ROADWAY ENGINEER *Timothy A. Popelan* DATE 3/1/07

OKLAHOMA DEPT. OF TRANSPORTATION
ROADWAY STANDARD (ENGLISH)

PRECAST MEDIAN BARRIER

1999 SPECIFICATIONS

PMB-2 01E

R-126AE