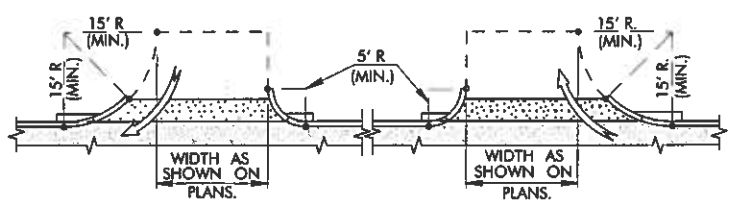
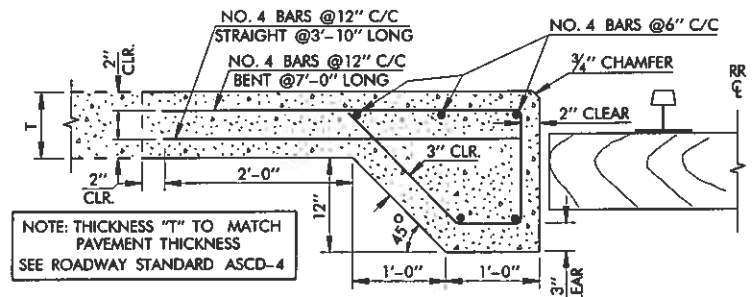


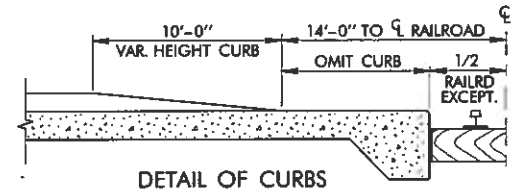
**TYPE 2 DRIVEWAY (TWO-WAY OPERATION)**



**TYPE 2A DRIVEWAYS (ONE-WAY OPERATION)**



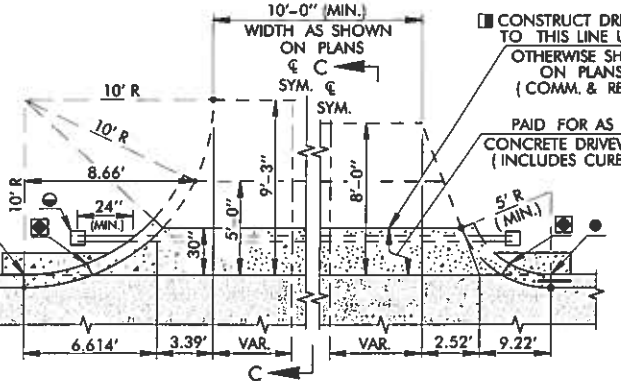
**CONCRETE RAILROAD APPROACH SLAB THICKENED EDGE @ RAILROAD CROSSING**



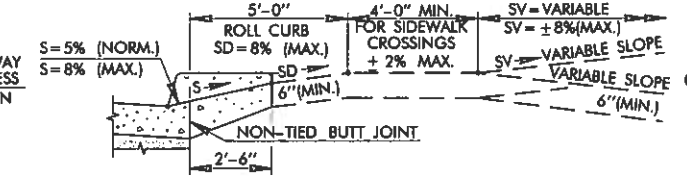
**DETAIL OF CURBS ADJACENT TO RAILROAD CROSSINGS**

DESCRIPTION	REVISIONS	DATE
RE ISSUE W/ENGLISH 1999 SPECS., Add Butt Joint Sidewalk/Curb Note, R/R Label & Ap. Slab Pay Item Remove T & G Joints & Refs. (All)		10/7/99
Add Apron Behind Curb At Driveways, Add Tie Bar Note & Clarify Tie Bar Specs. @Butt Joints		10/8/00
Modify Transv. Const. Joint Dowel Sizes		10/3/07
Added sidewalk crossing to Sec. C-C		10/6/09

IN CURB/SIDEWALK APPLICATIONS SEALANT & EXPANSION MATERIAL NOT REQUIRED BETWEEN STRAIGHT SECTIONS OF CURB/SIDEWALK COMBINATIONS WHEN OPPOSING EDGE OF SIDEWALK

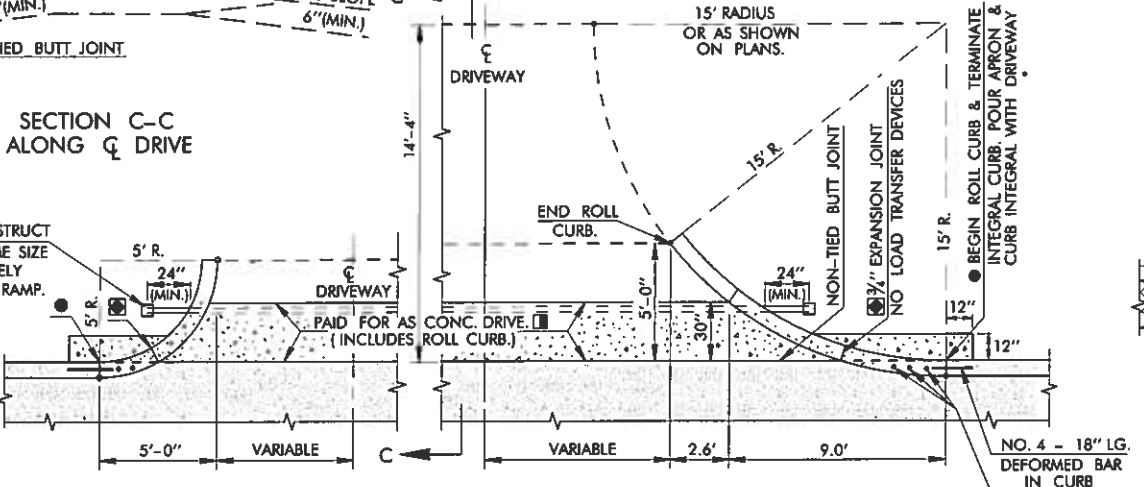


**TYPE 1 DRIVEWAYS (PRIVATE OR RESIDENTIAL)**



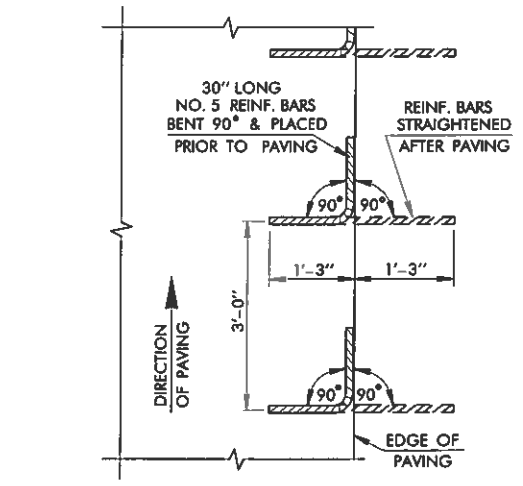
**SECTION C-C ALONG C DRIVE**

IF SPECIFIED IN THE PLANS, CONSTRUCT CONDUIT CROSSING OF THE SAME SIZE & TYPE SPECIFIED AT APPROXIMATELY 30" BELOW FINISHED GRADE OF RAMP. SEE GENERAL NOTES FOR DETAILS.

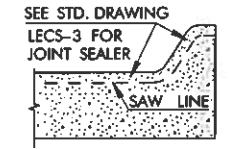


**TYPE 2 & 2A COMMERCIAL DRIVEWAYS**

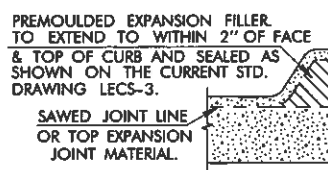
WHEN SIDEWALK IS BUILT DIRECTLY BEHIND THE CURB, THE CONCRETE DRIVEWAY SHOULD BE CONSTRUCTED & EXTENDED TO THE BACK EDGE OF SIDEWALK



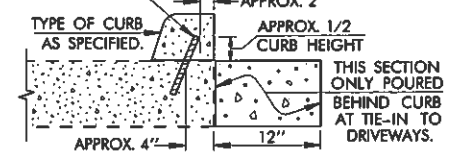
**SECTION B-B**



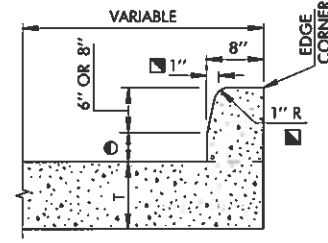
**ALTERNATE CURB JOINT**



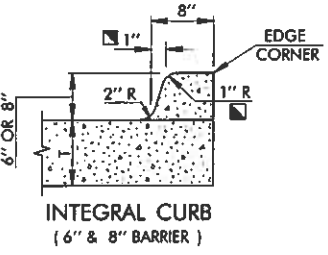
**CURB JOINT WITH EXPANSION MATERIAL**



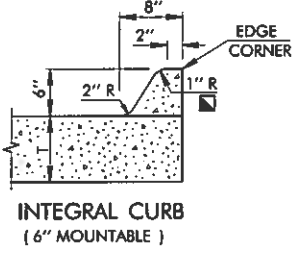
**OPTIONAL CURB CONSTRUCTION FOR SLIP FORM PAVING**



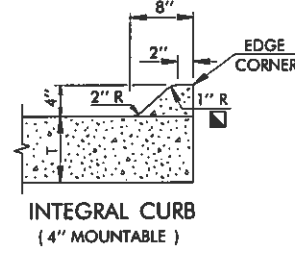
**INTEGRAL CURB (NOTCHED 6" & 8" BARRIER)**



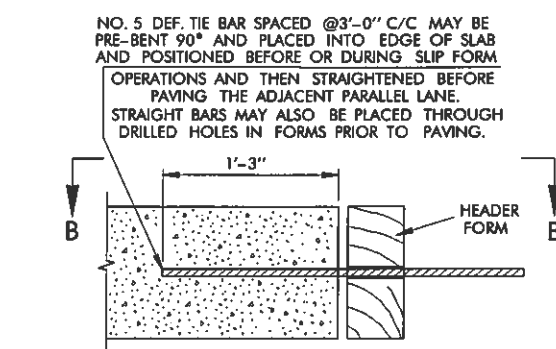
**INTEGRAL CURB (6" & 8" BARRIER)**



**INTEGRAL CURB (6" MOUNTABLE)**

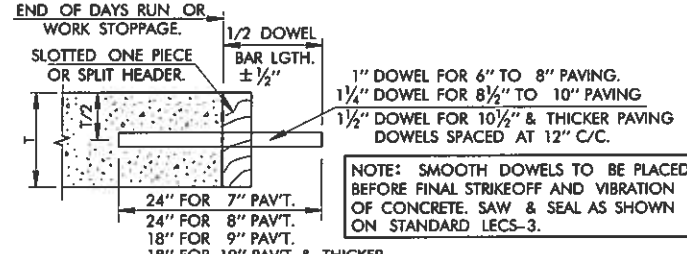


**INTEGRAL CURB (4" MOUNTABLE)**



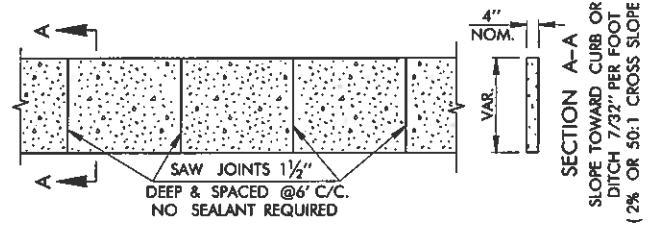
**SECTION TIED LONGITUDINAL BUTT JOINT**

(TO BE USED BETWEEN ADJACENT PAVING LANES)  
NOTE: LONGITUDINAL BUTT JOINT TIE BAR STEEL AND PLACEMENT METHOD NOT COVERED ON THIS STANDARD SHALL BE APPROVED BY THE ENGINEER.



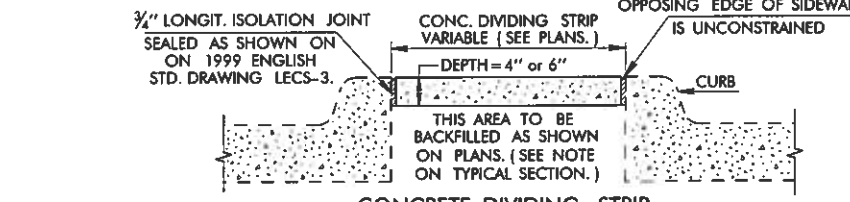
**TRANSVERSE CONSTRUCTION JOINT**

(TO BE USED AT END OF DAYS PLACEMENT OF CONCRETE OR ANY STOPPAGE OF 30 MINUTES OR MORE.)



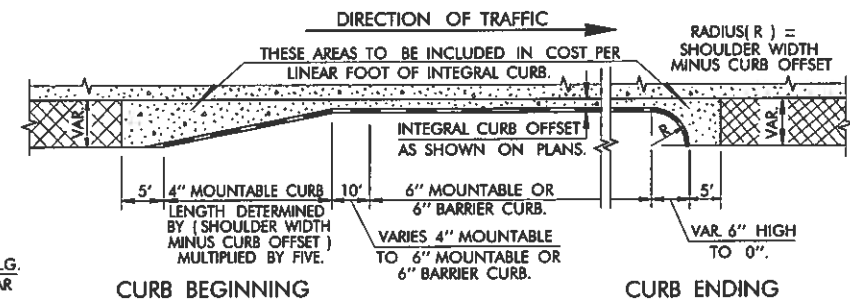
**PLAN DETAIL OF CONCRETE SIDEWALK**

SECTION A-A  
SLOPE TOWARD CURB OR DITCH 7/32" PER FOOT (2% OR 50:1 CROSS SLOPE)



**CONCRETE DIVIDING STRIP**

TRANSVERSE EXPANSION JOINTS TO BE 1/2" EXPAN. JOINT FILLER AT 50'-0" C/C, 1/4" EXPANSION JOINT MATERIAL AT 1/3 POINTS BETWEEN 1/2" EXPANSION JOINTS. FILLER MATERIAL TO BE PREMOULDED & JOINTS TO BE SEALED AS SHOWN ON STANDARD DRAWING LECS-3. JOINTS IN DIVIDING STRIP SHOULD ALIGN WITH CURB EXPANSION JOINTS.



**CURB BEGINNING**

**CURB ENDING**

**GENERAL NOTES**

- ALL CONSTRUCTION AND MATERIAL REQUIREMENTS SHALL BE IN ACCORDANCE WITH THE 1999 ENGLISH STANDARD SPECIFICATIONS.
- ALL COST OF CLASS A CONCRETE & REINFORCING STEEL IN THICKENED EDGE AT RAILROAD CROSSINGS SHALL BE INCLUDED IN THE PRICE BID FOR CONCRETE RAILROAD APPROACH SLAB.
- COST OF JOINT FILLERS, SEALING AND REINFORCING STEEL SHALL BE INCLUDED IN PRICE BID FOR OTHER ITEMS OF WORK.
- CONTRACTION JOINTS IN JOINTED P.C. PAVEMENT SHALL BE AT APPROXIMATELY 15'-0" CENTERS, UNLESS OTHERWISE SHOWN ON THE PLANS.
- CURB & GUTTER SHALL BE PLACED INTEGRAL WITH THE PAVING SLAB UNLESS OTHERWISE SHOWN IN THE PLANS. TRANSVERSE JOINTS SHALL BE EXTENDED THE FULL WIDTH OF SLAB.
- ALL CONDUIT CROSSINGS ARE TO BE TRENCHED, PLACED, BACKFILLED, AND COMPACTED PRIOR TO SURFACING, BORING OR PUSHING PROCEDURES MAY BE USED WHERE SURFACING IS ALREADY IN PLACE AND IF APPROVED BY THE ENGINEER.
- IF CONDUIT IS NOT CONTINUOUS BETWEEN DRIVEWAYS/RAMPS, CAP BOTH ENDS OF EACH CONDUIT CROSSING AND PLACE MARKER TO PREVENT DAMAGE DURING CONSTRUCTION.
- CONDUIT SHALL NOT TERMINATE BELOW A SURFACED AREA, BUT SHALL EXTEND MINIMUM OF 24" PAST EDGE OF PAVING.
- FOR PULL BOX INSTALLATION DETAILS, SEE TRAFFIC STANDARD DRAWING P8D.
- RADIUS OF 2" MAY BE USED IF APPROVED BY THE ENGINEER.
- BATTER OF 2" MAY BE USED IF APPROVED BY THE ENGINEER.
- DIMENSION EQUALS THICKNESS OF ASPHALT CONCRETE SHOWN ON TYPICAL SECTION ASPHALT CONCRETE THICKNESS (2" MIN.; 4" MAX.)

BASIS OF PAYMENT		
ITEM NO.	ITEM	UNIT
414.06(C)	CONCRETE RAILROAD APPROACH SLAB	S.Y.
609.06(A)	CONCRETE CURB (INTEGRAL)	L.F.
610.06(A)	CONCRETE SIDEWALK	S.Y.
610.06(B)	CONCRETE DRIVEWAY	S.Y.
610.06(B)	CONCRETE DRIVEWAY (H. E. S.)	S.Y.
610.06(C)	CONCRETE DIVIDING STRIP	S.Y.

HEIGHT & SHAPE OF CURB SHALL BE SPECIFIED.  
THICKNESS SHALL BE SPECIFIED IN INCHES.

APPROVED BY ROADWAY ENGINEER *Timothy A. Popple* DATE 4/24/09

**OKLAHOMA DEPT. OF TRANSPORTATION**  
**ROADWAY STANDARD (ENGLISH)**

**CONCRETE SURFACING**  
**CONSTRUCTION DETAILS**