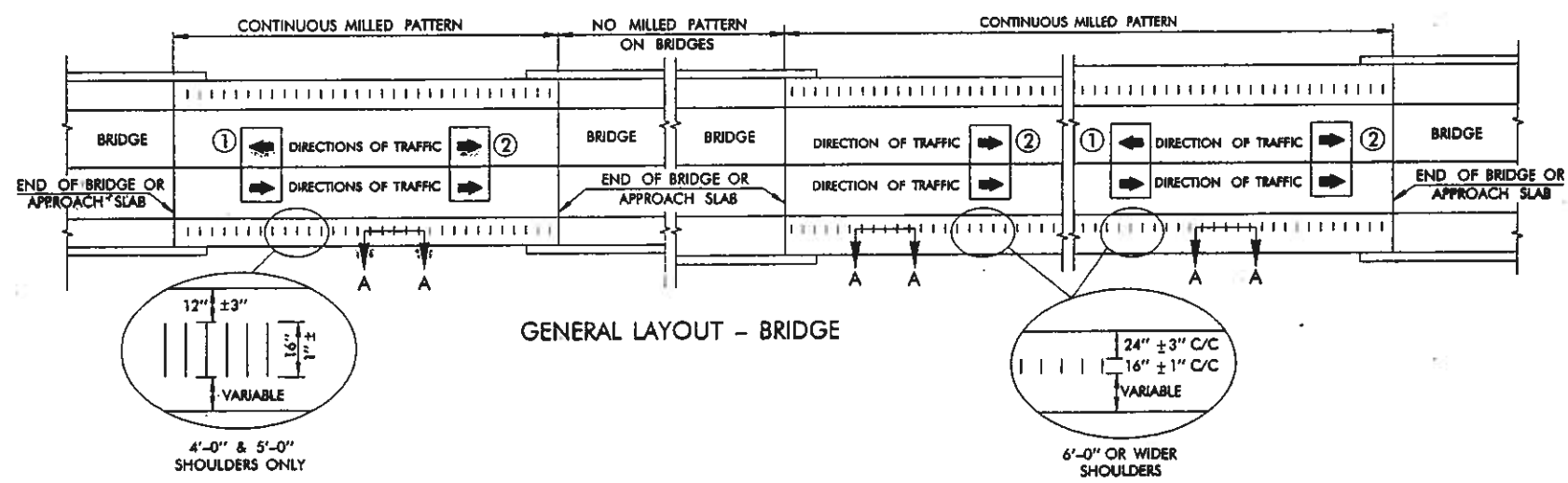


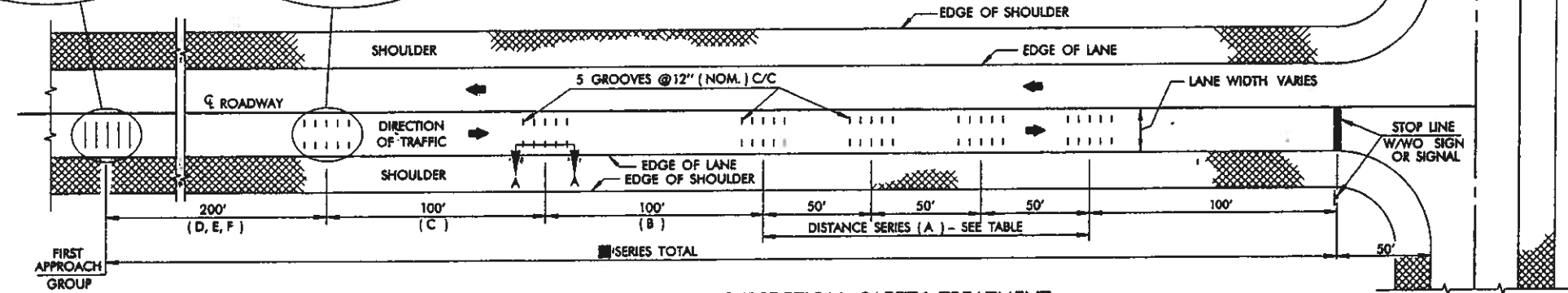
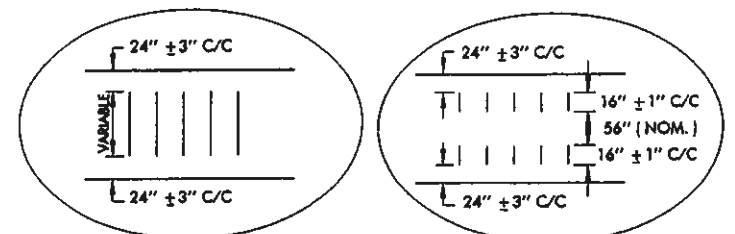
DESCRIPTION	REVISIONS	DATE
RE-ISSUE IN ENGLISH 1999 SPECS.		
Intersection Safety Pattern & Groove Dim. Ipc 7/99		
Add Raised Strip Ops. & Milled In Specs. Ipc 8/00		
Add Gen. Note No. 41 & 5		Ipc 11/02



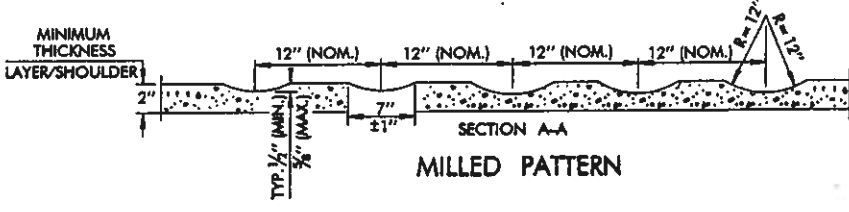
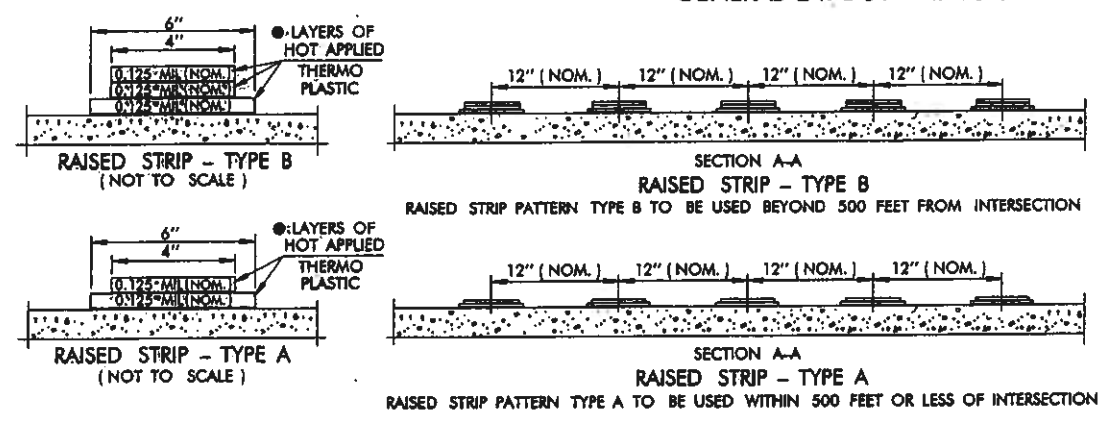
**SAFETY TREATMENT - SPACING
(FOR PATTERNS IN PAVING LANE)**

DESIGN NO.	MPH	DISTANCE	SERIES A	B	C	D	E	F	SERIES TOTAL	CYCLIC GROUPS EACH
1	40	4 GROUPS @ 50' C/C	100'	100'	200'				650'	14
2	45	4 GROUPS @ 50' C/C	100'	100'	200'				650'	14
3	50	5 GROUPS @ 50' C/C	100'	100'	200'				700'	16
4	55	6 GROUPS @ 50' C/C	100'	100'	200'				750'	18
5	60	6 GROUPS @ 50' C/C	100'	100'	200'	200'			950'	20
6	65	6 GROUPS @ 50' C/C	100'	100'	200'	200'	200'		1150'	22
7	70	6 GROUPS @ 50' C/C	100'	100'	200'	200'	200'	200'	1150'	22

■ SERIES TOTAL MEASURED FROM STOP BAR TO CENTER OF FIRST APPROACH GROUP



- GENERAL NOTES**
- ALL CONSTRUCTION AND MATERIAL REQUIREMENTS SHALL BE IN ACCORDANCE WITH THE 1999 ENGLISH STANDARD SPECIFICATIONS.
 - ALL APPROVED RUMBLE STRIP PATTERNS SHALL BE APPLIED IN THE SAME MANNER WHEN CONSTRUCTED ON TWO LANE - TWO WAY (1) ROADWAYS OR TWO LANE - ONE WAY (2) ROADWAYS OR WHEN OTHERWISE SHOWN ON THE PLANS.
 - MATERIALS SPECIFICATIONS FOR RAISED RUMBLE STRIPS SHALL CONFORM TO SECTION 711.01 OF THE 1999 ENGLISH STANDARD SPECIFICATIONS.
 - RUMBLE STRIPS, WHEN MILLED INTO CONCRETE PAVEMENT OR SHOULDERS, SHALL NOT BE APPLIED CLOSER THAN 18 INCHES FROM TRANSVERSE JOINTS OR 12 INCHES FROM LONGITUDINAL JOINTS.
 - MILLED RUMBLE STRIPS, WHEN INSTALLED IN ASPHALT SURFACES, SHALL BE FOGSEALED A NOMINAL ONE INCH OUTSIDE THE MILLED LENGTH/WIDTH AT A RATE OF 0.1 GAL/SQ. YD. IN ACCORDANCE TO SECTION 407 OF 1999 OKLAHOMA STANDARD SPECIFICATIONS FOR HIGHWAY CONSTRUCTION. THE COST OF FOG SEAL SHALL BE INCLUDED IN THE PRICE BID FOR RUMBLE STRIP.



BASIS OF PAYMENT

ITEM NO.	ITEM	UNIT
413.06 (A)	RUMBLE STRIP - METHOD AC-CON	L.F.
413.06 (B)	RUMBLE STRIP - METHOD AC-CYC (GROUP)	EA.
413.06 (C)	RUMBLE STRIP - METHOD PCC-CYC (GROUP)	EA.
413.06 (D)	(SP) RUMBLE STRIP - METHOD PCC-CON	L.F.

APPROVED BY ROADWAY ENGINEER *Ben C. Schmitt* DATE 11/01/02

**OKLAHOMA DEPT. OF TRANSPORTATION
ROADWAY STANDARD (ENGLISH)**

RUMBLE STRIP

1999 SPECIFICATIONS RS2-2 02E

IR-106E