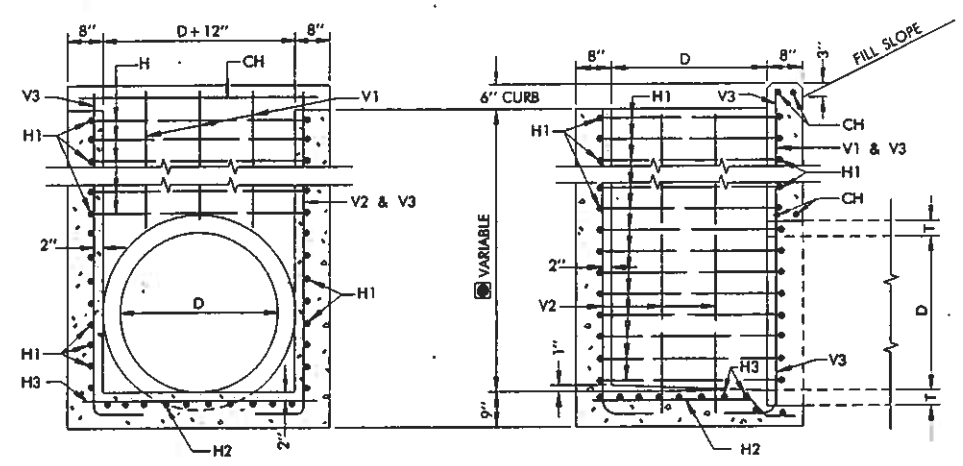
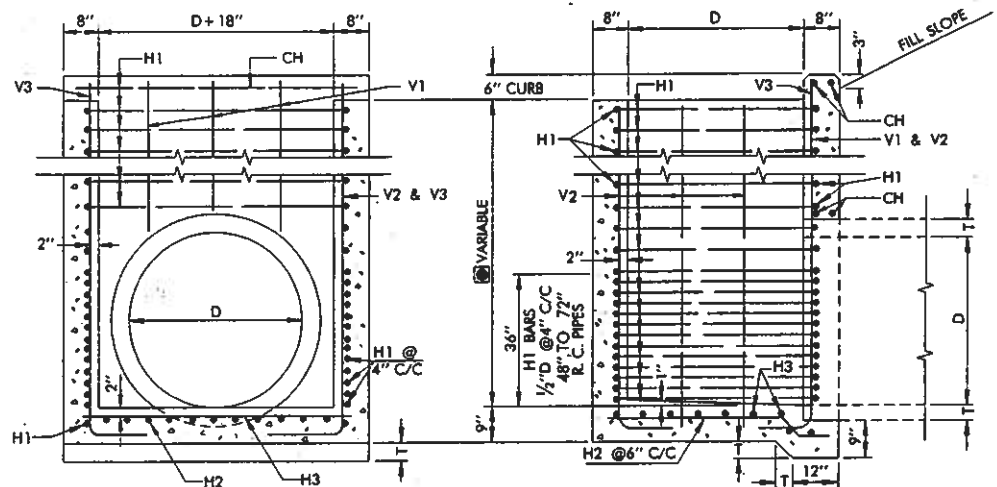


BUILD NOTCH AS SHOWN ON ALL DROP INLETS WHERE STRUCTURE SPAN IS 4'-0" OR MORE. NOTCHES TO BE PLACED IN LINE OF FLOW ONLY AS DIRECTED BY THE ENGINEER.



SECTION A-A
SECTION ON C-C
DROP INLET FOR 18" TO 42" REINF. CONCRETE PIPE
DIMENSION FOR STD. HEIGHT DROP INLET TO BE (D+T+3")



SECTION B-B
SECTION ON E-E
DROP INLET FOR 48" TO 72" REINF. CONCRETE PIPE

- GENERAL NOTES**
- ALL CONSTRUCTION AND MATERIAL REQUIREMENTS SHALL BE IN ACCORDANCE WITH THE 1999 ENGLISH STANDARD SPECIFICATIONS.
 - ALL EXPOSED CONCRETE EDGES SHALL HAVE A 3/4" CHAMFER.
 - ALL REINFORCING STEEL SHALL BE 1/2" DIAMETER (#4). HORIZONTAL BARS SHALL BE PLACED AT 6" CENTERS EXCEPT AS SHOWN FOR 48" TO 72" R.C. PIPE. VERTICAL BARS ARE TIE BARS SPACED AS SHOWN.
 - MAXIMUM DEPTHS OF DROP INLET FOR 48" TO 72" R.C.P. SHALL BE AS FOLLOWS:
48" RCP - 18'-0"
54" RCP - 16'-0"
66" RCP - 12'-0"
72" RCP - 10'-0"
 - TOTAL QUANTITIES AS SHOWN IN TABLE ARE COMPUTED TO TOP OF PIPE AND INCLUDE CURB. FOR DROP INLETS OF GREATER DEPTH, MULTIPLY THE FIGURE IN PER FOOT COLUMN BY THE HEIGHT FROM TOP OF PIPE TO TOP OF DROP INLET AND ADD THE RESULT TO THE QUANTITY IN THE PRECEDING COLUMN.
 - UNLESS OTHERWISE SPECIFIED, ALL EXPOSED CONCRETE SURFACES SHALL HAVE A FINISH IN ACCORDANCE WITH THE 1999 ENGLISH STANDARD SPECIFICATIONS.
 - INLET TOP OPENING SHALL HAVE 3" x 7.58 LBS./FT. STD. WEIGHT STEEL PIPE, GALVANIZED, SCHEDULE 40, PIPE SAFETY GRATES INSTALLED PERPENDICULAR TO THE DIRECTION OF TRAFFIC AT 12" (MAXIMUM) CENTERS WITH THE COST OF PIPE SAFETY GRATES & ALL HARDWARE NEEDED FOR THE INSTALLATION TO BE INCLUDED IN THE PRICE BID FOR THE INLET.
 - PIPE GRATE ENDS SHALL BE HELD DOWN WITH 1/2" x 5 1/2" GALVANIZED BOLT, WASHER & NUT MEETING THE REQUIREMENTS OF ASTM-A-325. BOLT THREADS, 1 3/4", SHALL REMAIN EXPOSED FOR INSTALLING GRATE.
 - BAR BENDING DIAGRAMS AND DIMENSIONS FOR DESIGNS 1 THROUGH 10, AS SHOWN THIS SHEET, ARE FOR STANDARD DEPTH DROP INLETS.

DESIGN NUMBER	DIMENSIONS		REINFORCING STEEL										CLASS A CONCRETE		REINFORCING STEEL		PIPE GRATES				
	D IN.	AREA OF PIPE SQ.FT.	CH - BARS STRAIGHT		H1 - BARS BENT		H2 - BARS BENT		H3 - BARS STRAIGHT		V1 - BARS STRAIGHT		V2 - BARS BENT		V3 - BARS BENT		TOTAL TO TOP OF PIPE INCLUDING CURB CU.YD.	PER FOOT OF ADDITIONAL HEIGHT C.Y./V.F.	TOTAL TO TOP OF PIPE INCLUDING CURB LBS.	PER FOOT OF ADDITIONAL HEIGHT LBS./V.F.	NO. OF PIPE GRATES EA.
			NO.	LGTH.	NO.	LGTH.	NO.	LGTH.	NO.	LGTH.	NO.	LGTH.	NO.	LGTH.	NO.	LGTH.					
1	18"	1.77	4	29"	5	134"	7	30"	7	26"	2	12"	6	42"	2	48"	0.58	0.21	77	24	2
2	24"	3.14	4	35"	6	158"	8	36"	8	32"	3	13"	6	48"	2	54"	0.86	0.26	104	29	2
3	30"	4.91	4	41"	7	182"	9	42"	9	38"	4	14"	7	54"	2	60"	1.20	0.30	138	35	3
4	36"	7.07	4	47"	8	206"	10	48"	10	44"	4	16"	8	60"	2	66"	1.58	0.35	176	42	3
5	42"	9.62	4	53"	9	230"	11	54"	11	50"	5	18"	10	66"	2	72"	2.11	0.40	223	49	4
6	48"	12.57	4	59"	15	254"	12	60"	12	56"	5	19"	10	72"	2	78"	2.60	0.45	333	52	4
7	54"	15.90	4	65"	16	278"	13	66"	13	62"	6	21"	10	78"	2	84"	3.18	0.49	385	60	5
8	60"	19.63	4	71"	17	302"	14	72"	14	68"	6	22"	11	84"	2	90"	3.79	0.54	448	66	5
9	66"	23.76	4	77"	18	326"	15	78"	15	74"	7	24"	12	90"	2	96"	4.47	0.59	517	74	6
10	72"	28.27	4	83"	19	350"	16	84"	16	80"	7	25"	14	96"	2	102"	5.21	0.64	594	83	6

BASIS OF PAYMENT		
ITEM NO.	ITEM	UNIT
611.06(E)	INLET	EA.
611.06(F)	ADDITIONAL DEPTH IN INLET	V.F.

INLET DESIGN NUMBER SHALL BE SPECIFIED.

APPROVED BY ROADWAY ENGINEER *C.M. Sember* DATE 9/1/99

OKLAHOMA DEPT. OF TRANSPORTATION
ROADWAY STANDARD (ENGLISH)
REINFORCED CONCRETE DROP INLETS FOR
18" TO 72" REINFORCED CONCRETE PIPES
1999 SPECIFICATIONS CD14-1 OOE R-68E