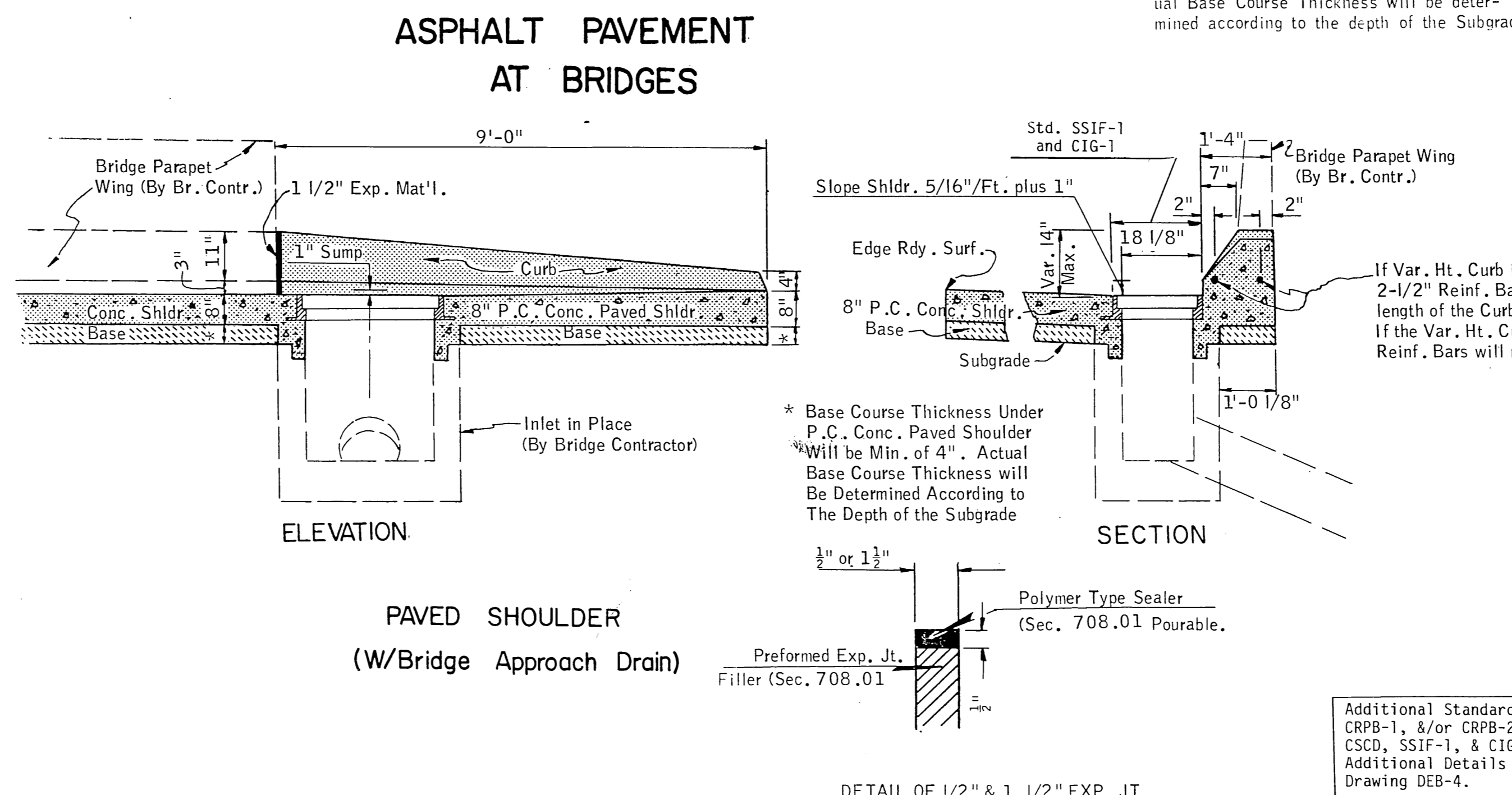
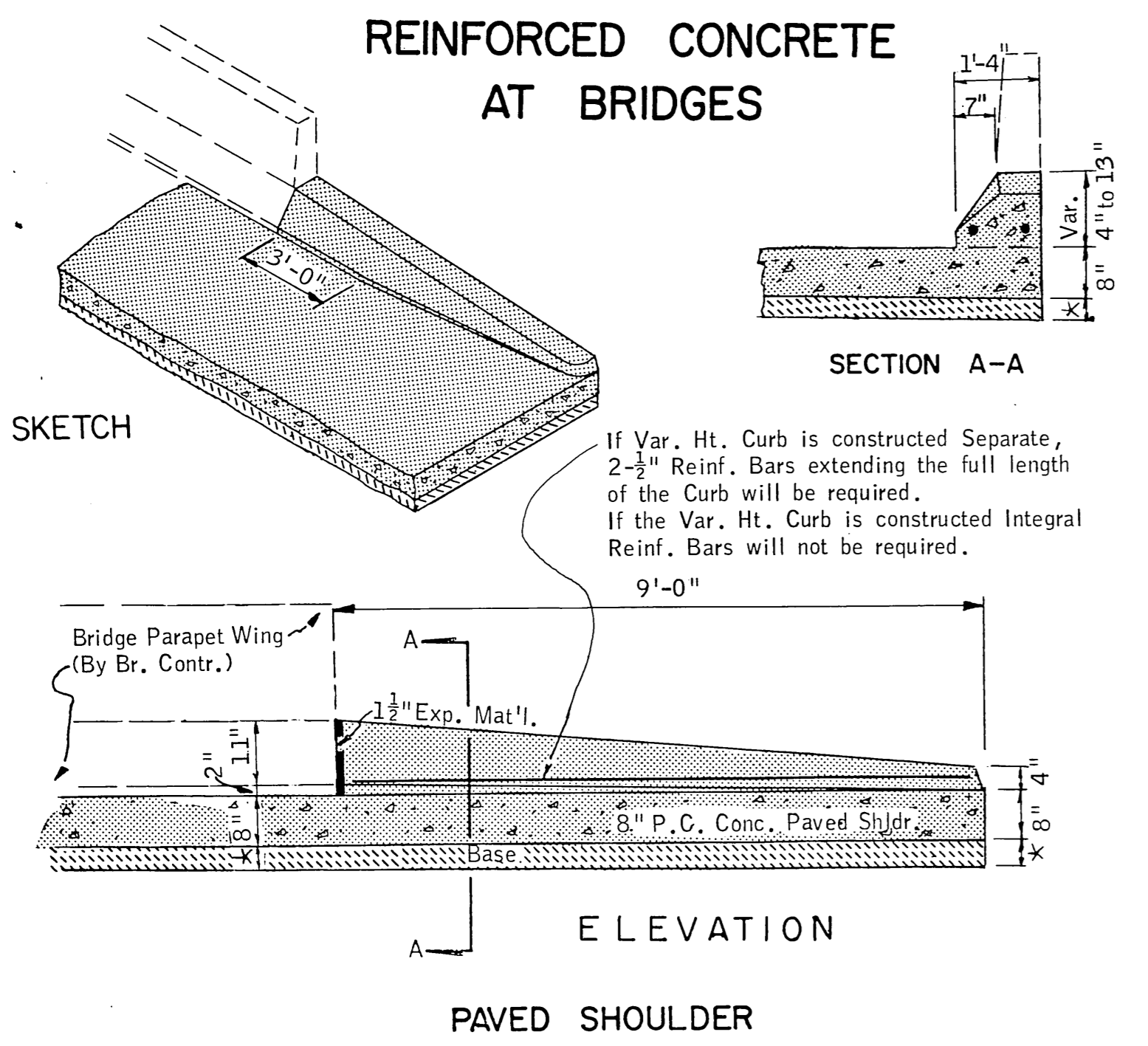
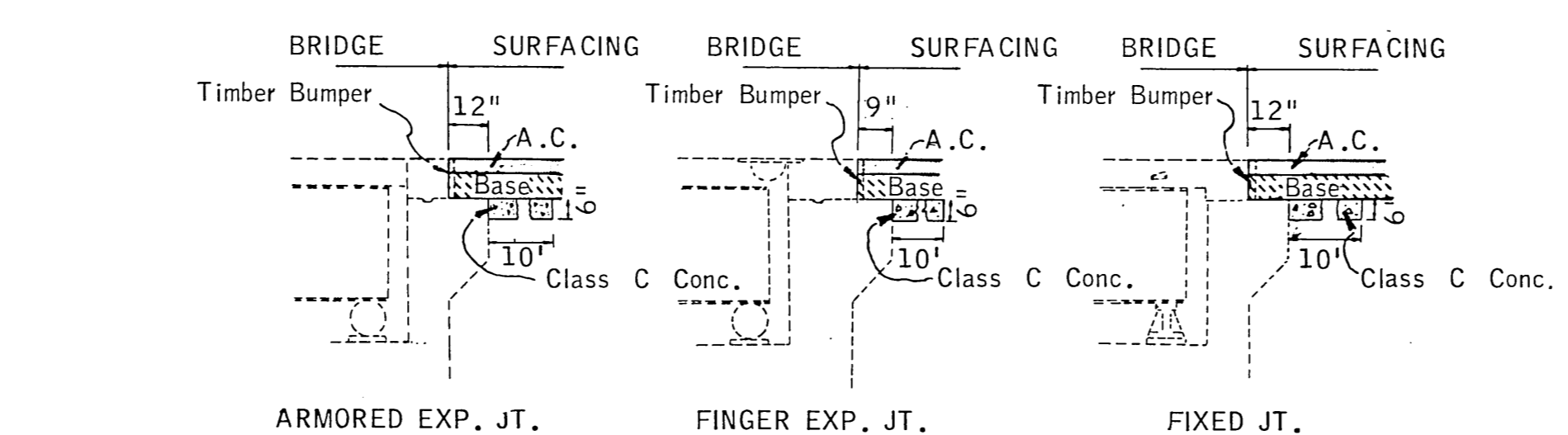
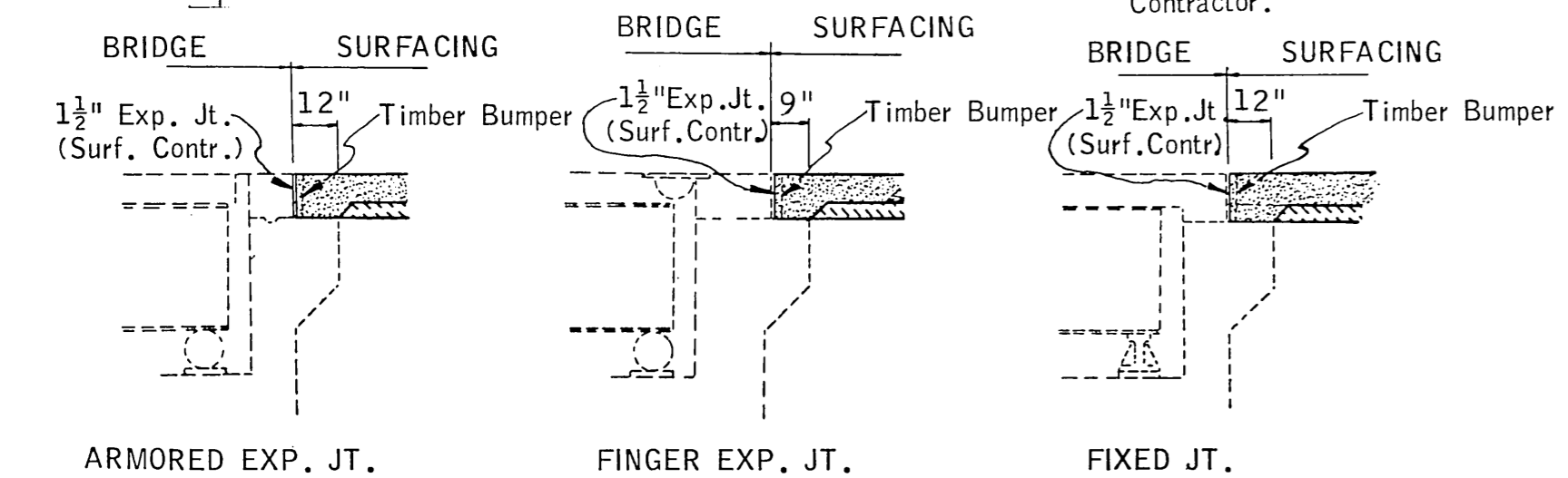
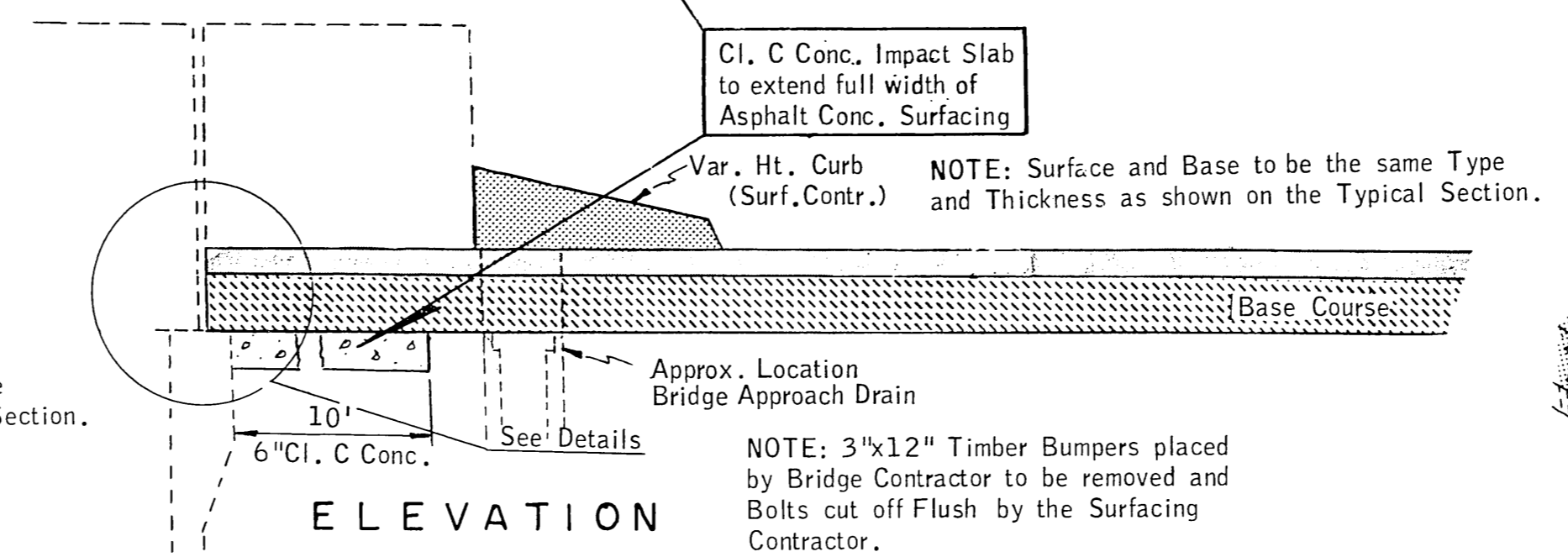
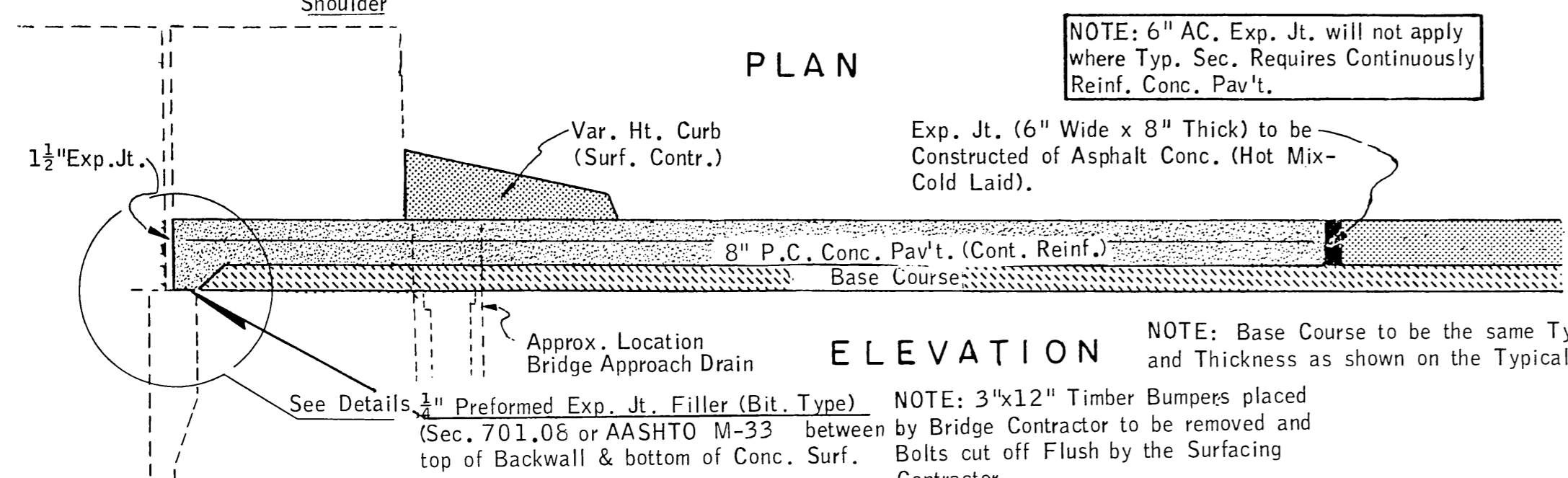
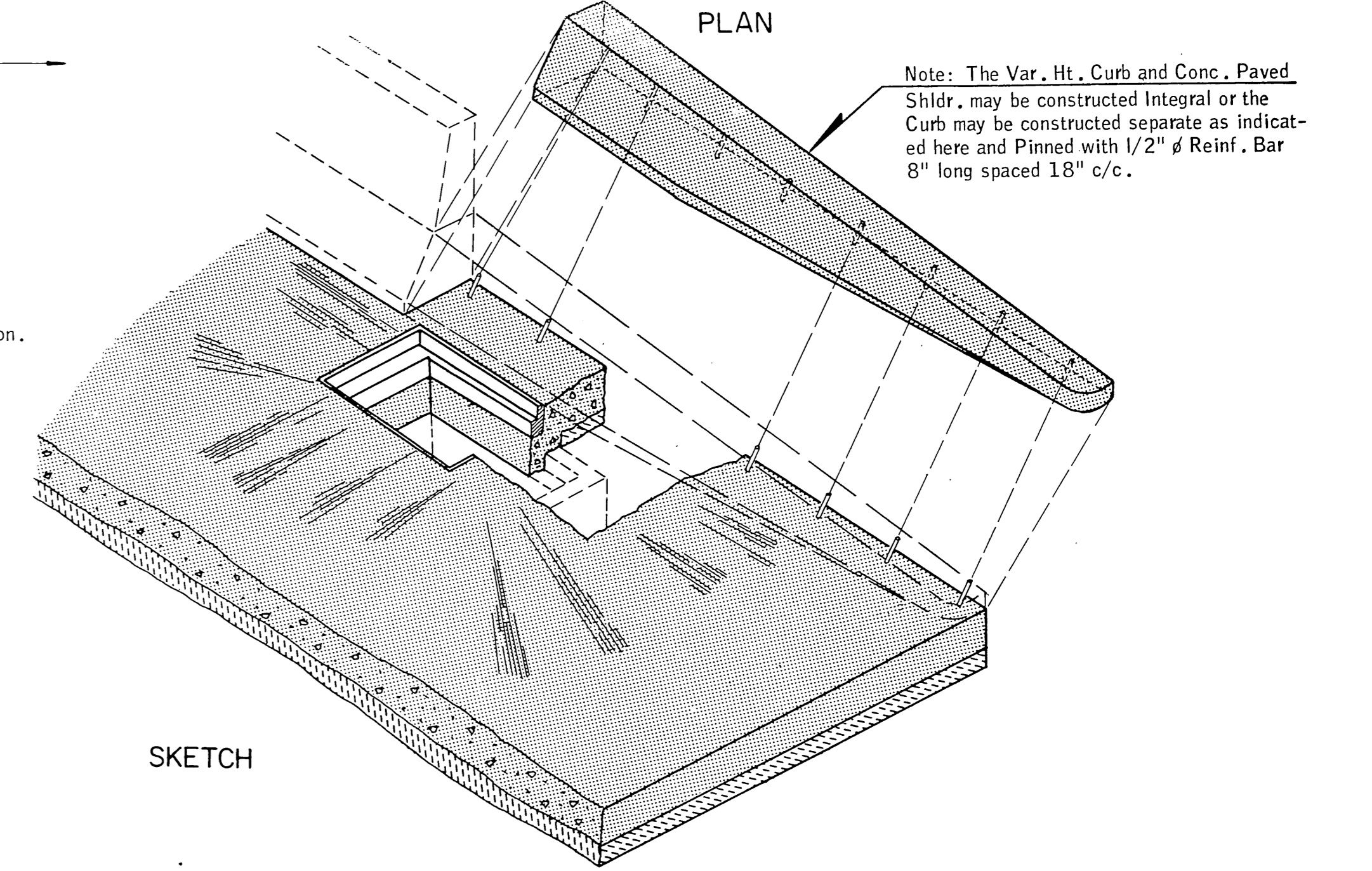
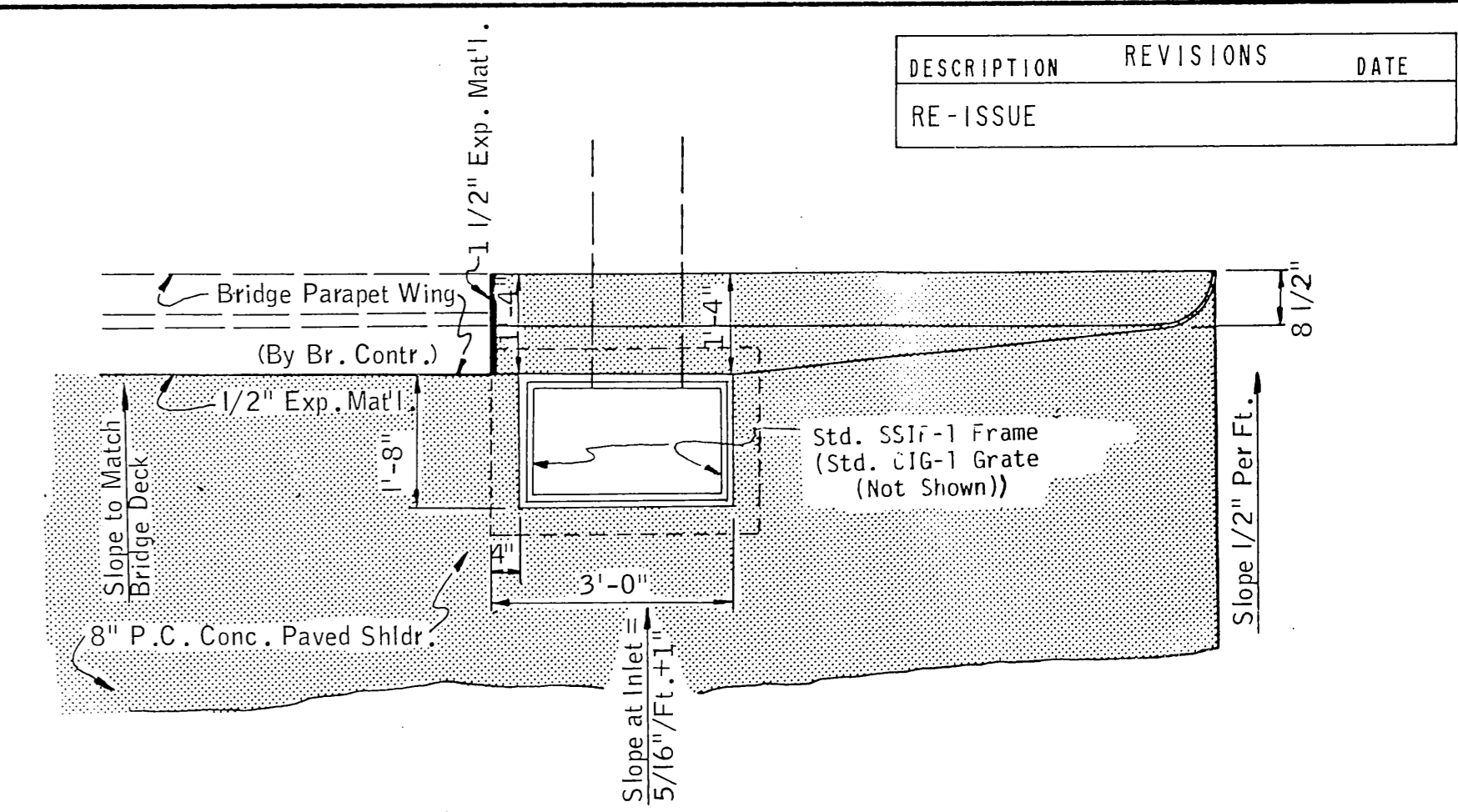
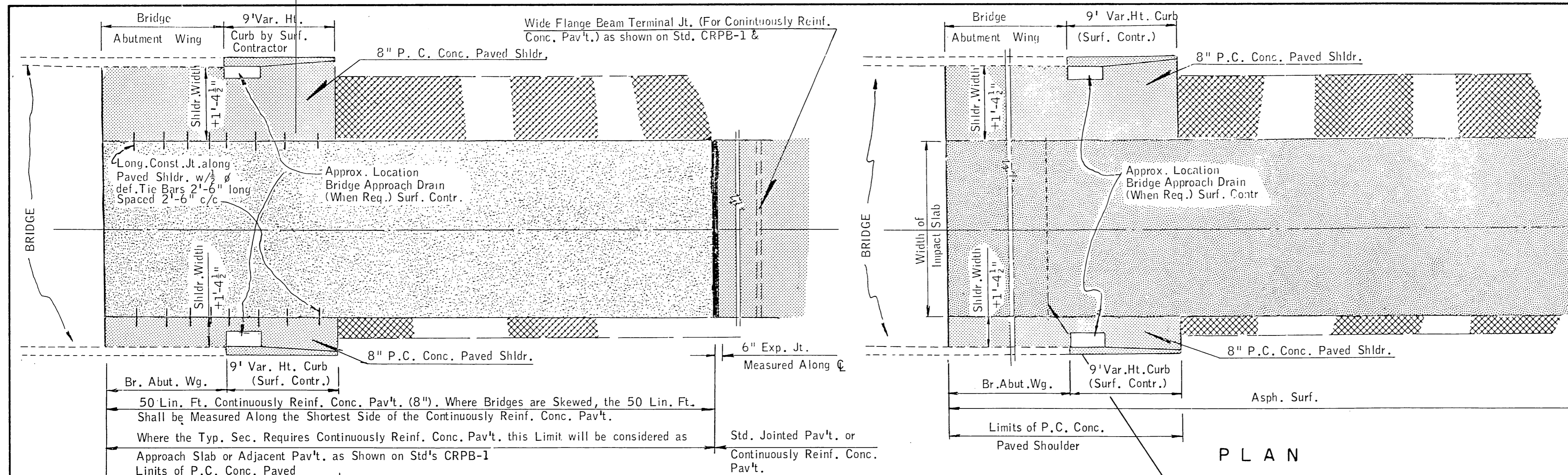


DESCRIPTION	REVISIONS	DATE
RE-ISSUE		



\*Base Course Thickness under P.C. Conc. Paved Shldr. will be a Min. of 4\".

- Area of P.C. Conc. Paved Shldr. will be measured to the back of the variable Ht. Curb and the face of the Bridge Abutment Wing. Cost of the Var. Ht. Curb, Reinf. Steel, and the Class C Conc. "Impact Slab" when used with Asphalt Pav't. shall be included in the Price Bid for 8" P.C. Conc. Paved Shldr. The Area of the "Bridge Approach Drain" will not be deducted from the area of the Paved Shoulder.
- Price Bid for Inlet Frame and Grate to include the cost of additional concrete, frame and grate, reinf. steel and all other incidentals necessary to construct the Inlet.

APPROVED BY				
RURAL DES. ENGR.	URBAN DES. ENGR.	BRIDGE ENGINEER	CONST. ENGINEER	ASS'T. DIR./DES.
<i>Wagner</i>	<i>Smith</i>	<i>Tolan</i>	<i>Wells</i>	<i>R.G. Hurd</i>
DATE 12-1-88	DATE 12-15-88	DATE 12-9-88	DATE 1-12-88	DATE 1-23-88
DESIGN	S. R.	OKLAHOMA DEPT. OF TRANSPORTATION STANDARD		
DRAWN	LED	SURFACED APPROACHES AT BRIDGES		
CHECKED	LGC 9/88	OBSOLETE		
SQUAD	ENG. SUPRT. BRANCH	SAAB-2-4		
RURAL/URBAN DESIGN		1988 SPECIFICATIONS		

Additional Standard Drawings Required  
CRPB-1, 8/ or CRPB-2, CRPB-3,  
CSCD, SSIF-1, & CIG-1  
Additional Details see Standard Drawing DEB-4.

DETAIL OF 1/2" & 1 1/2" EXP. JT.