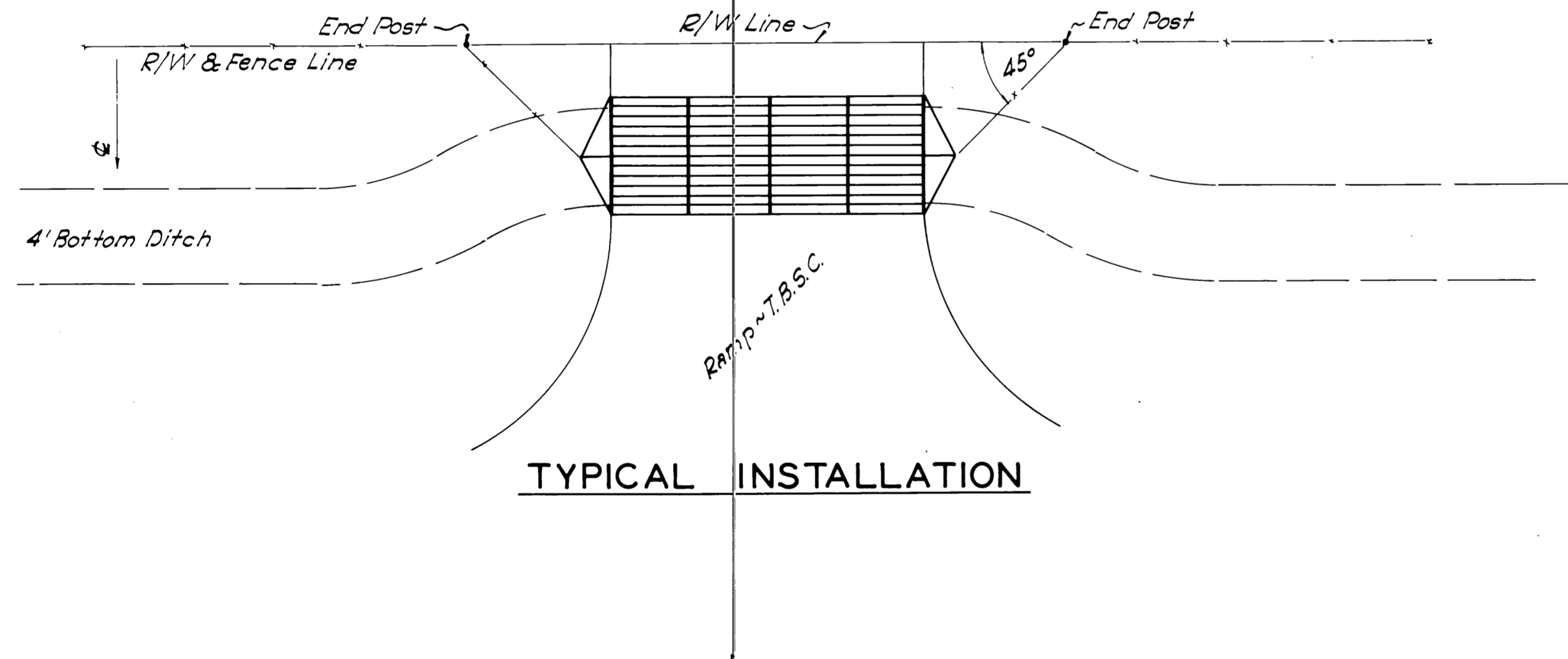
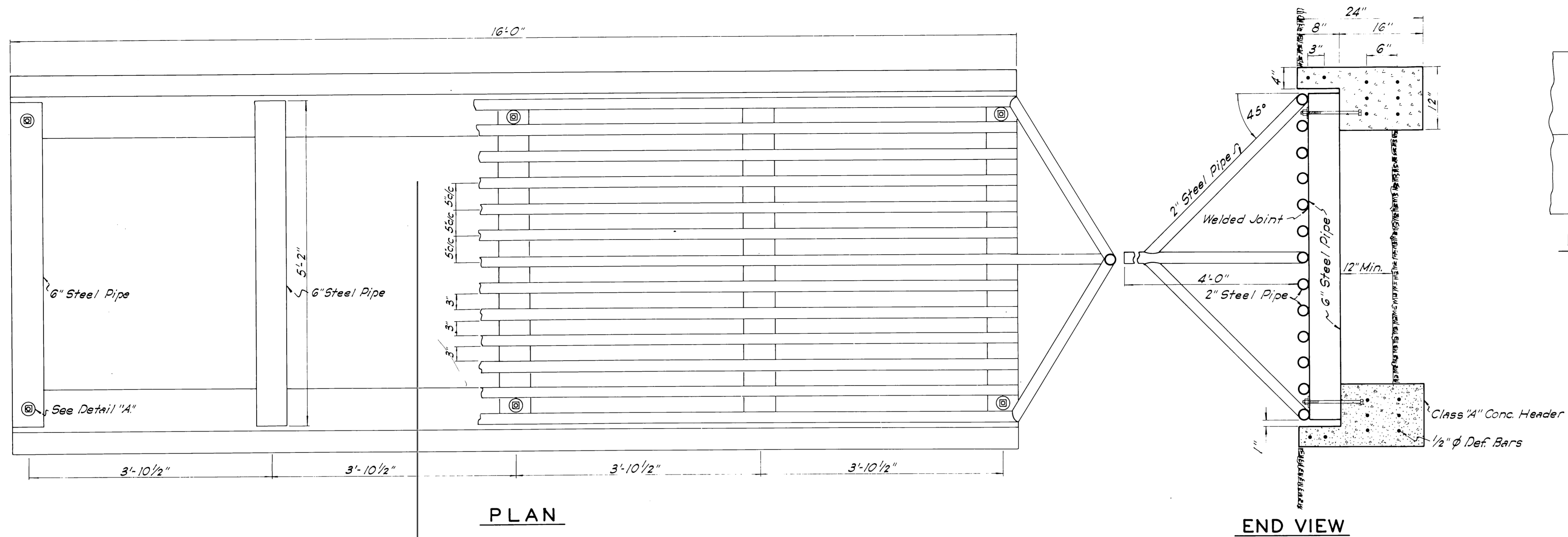


Traced By R.L. West & L. Johnson



| QUANTITIES FOR ONE CATTLE GUARD | | |
|---|----------|------------|
| ITEM | UNIT | QUANTITIES |
| Reinf. Steel | Lbs. | 168 |
| Class "A" Conc. | Cu. Yds. | 1.94 |
| 2" Steel Pipe | Lin. Ft. | 240 |
| 6" Steel Pipe | Lin. Ft. | 26 |
| 1"x12" Std. Mech. Bolts W/2" Round Washer | Each | 6 |

Item "Cattle Guard" consists of structure complete in place as shown on plans. Payment will be made at the lump sum price bid which shall include all cost of materials, labor, tools, excavation, & incidentals necessary to complete the work as specified & shown on plans.

Construction Notes
 New or used pipe may be used in const. of cattle guard. Used pipe must be approved by the engineer before const. is begun.

All metal in cattle guard shall be painted with two coats of approved aluminum paint.

All construction shall be in accordance with Oklahoma standard specifications and special provisions.

All joints shall be of welded construction.

2" steel pipe is shown on plans as runners. Larger size steel pipe may be used but a min. of 3" between edges of pipe must be maintained.

All construction and materials requirements shall be in accordance with the current standard specifications.

Rev. Detail "A" JC 6-17-64
 Rev. Reinf. Spec. Wrs GMW 5-23-63

OKLAHOMA DEPARTMENT OF TRANSPORTATION
 OKLAHOMA CITY, OKLAHOMA
STANDARD CATTLE GUARD
FOR FARM ENTRANCES 108
 16'-0" ROADWAY CGC-4-1

OLD 416189