

FED. ROAD DIST. NO.	STATE	PROJ. NO.	FISCAL YEAR	SHEET NO.	TOTAL SHEETS
6	OKLA.				
DESCRIPTION					DATE
Rev. Gen. Notes & Grate					DLH 8-84

GENERAL NOTES

The area designated Inlet Depression shall be constructed of and paid for as P.C. Concrete Pavement when built in or adjacent to driving lanes on a P.C. Concrete Pavement project.

The area designated Inlet Depression shall be constructed of the same type pavement and paid for as directed by the Engineer when the inlet is built in or adjacent to driving lanes on any type or combination of base course and surfacing. Class 'A' Concrete may be used in lieu of pavement or base course at the discretion of the Engineer.

Frames used with this inlet, including support beams, riser plates and filler plates, shall be as shown on Standard Drawing SSIF-1.

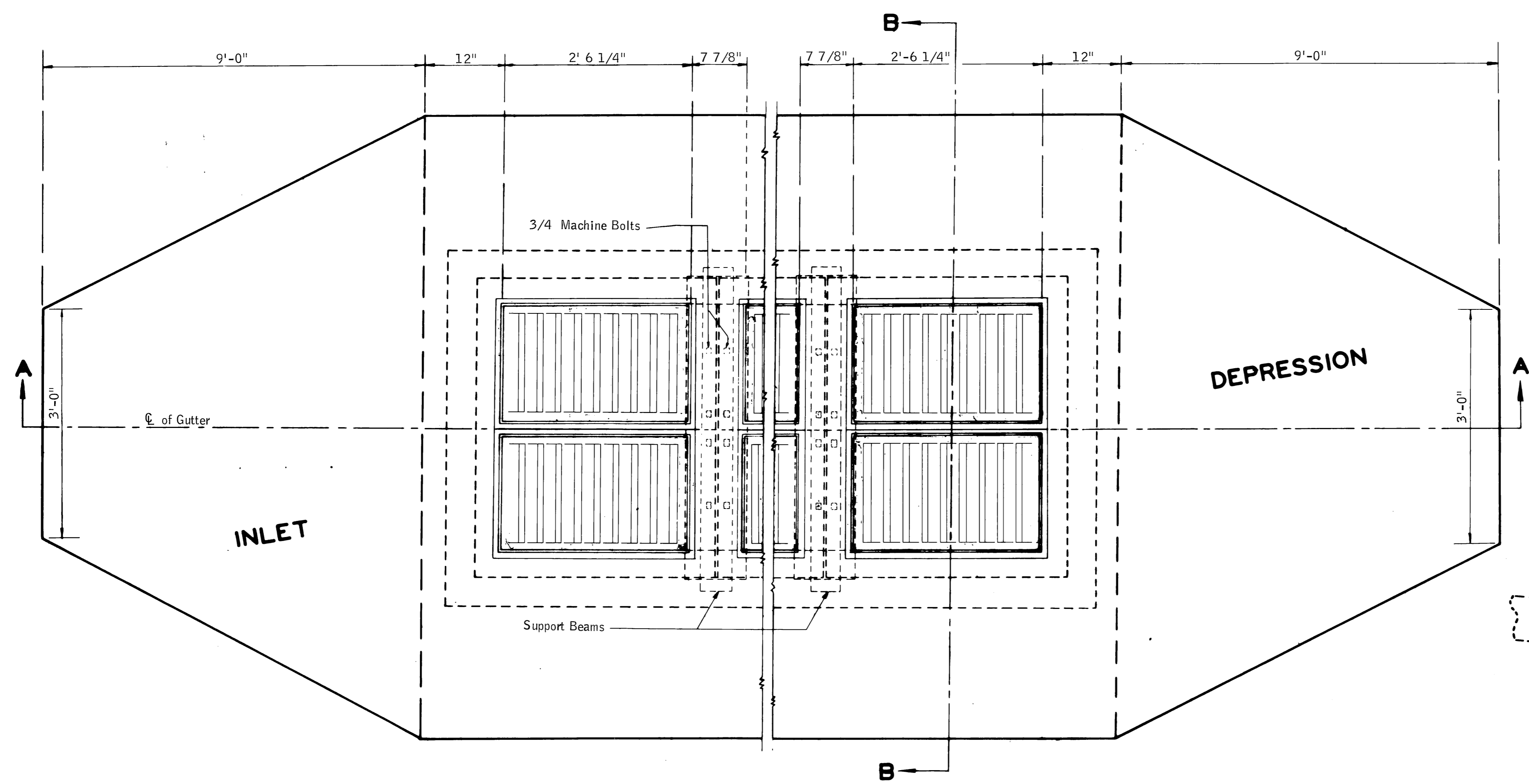
This structure will be designated on the plans as Inlet No. 7-(*)
 (* Indicate number of double grates.)

Length of Inlet Formula.
 $L = 3.18 N - 0.66$ where N = number of double grates.

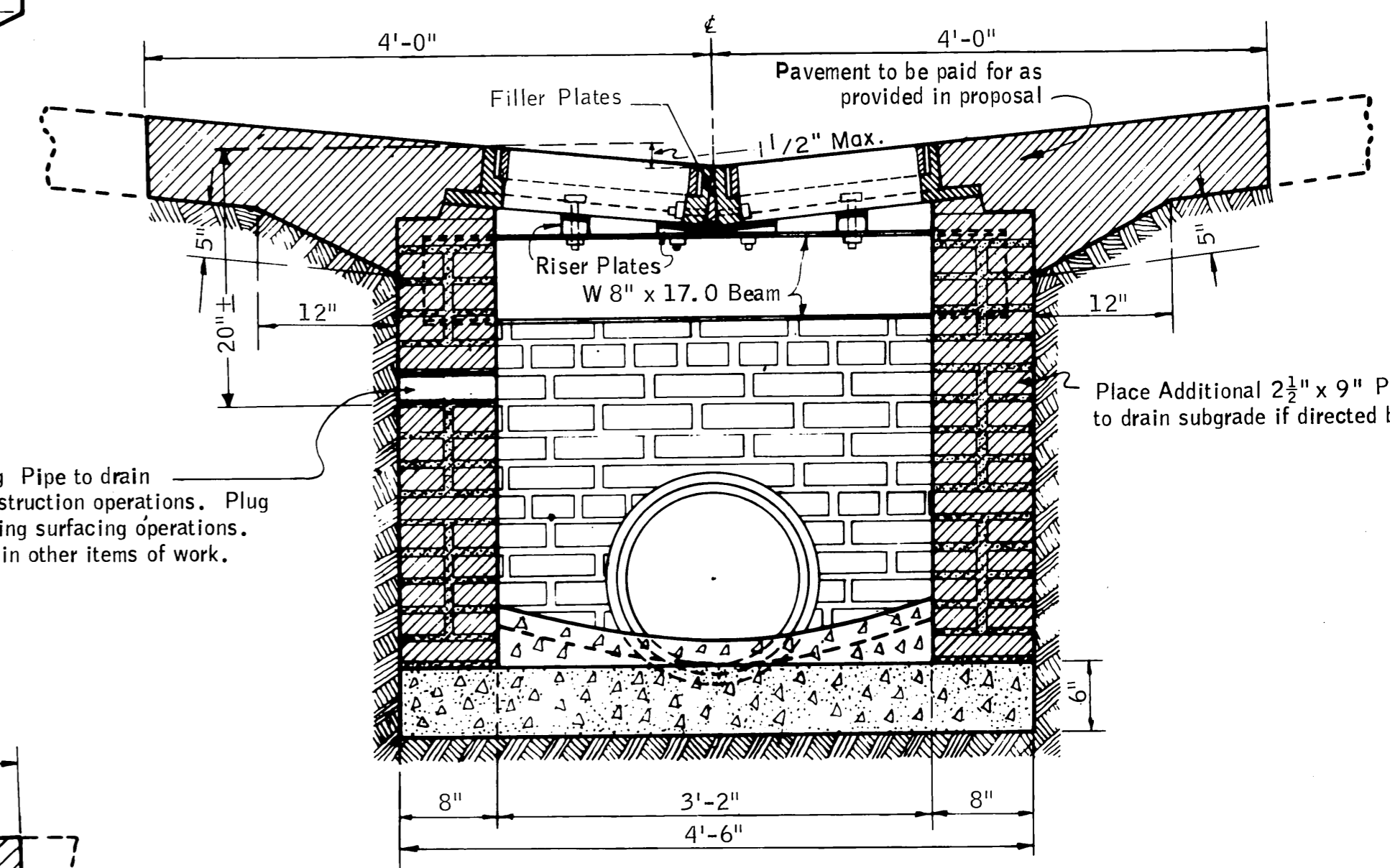
All construction and materials shall be in accordance with the current specifications.

Storm sewer inlet walls may be of masonry or poured concrete meeting the mix requirements of Class 'A' Concrete, and to the same dimensions as shown on this drawing. Measurement shall be by the Cubic Ft. and payment at the price bid for INLET.

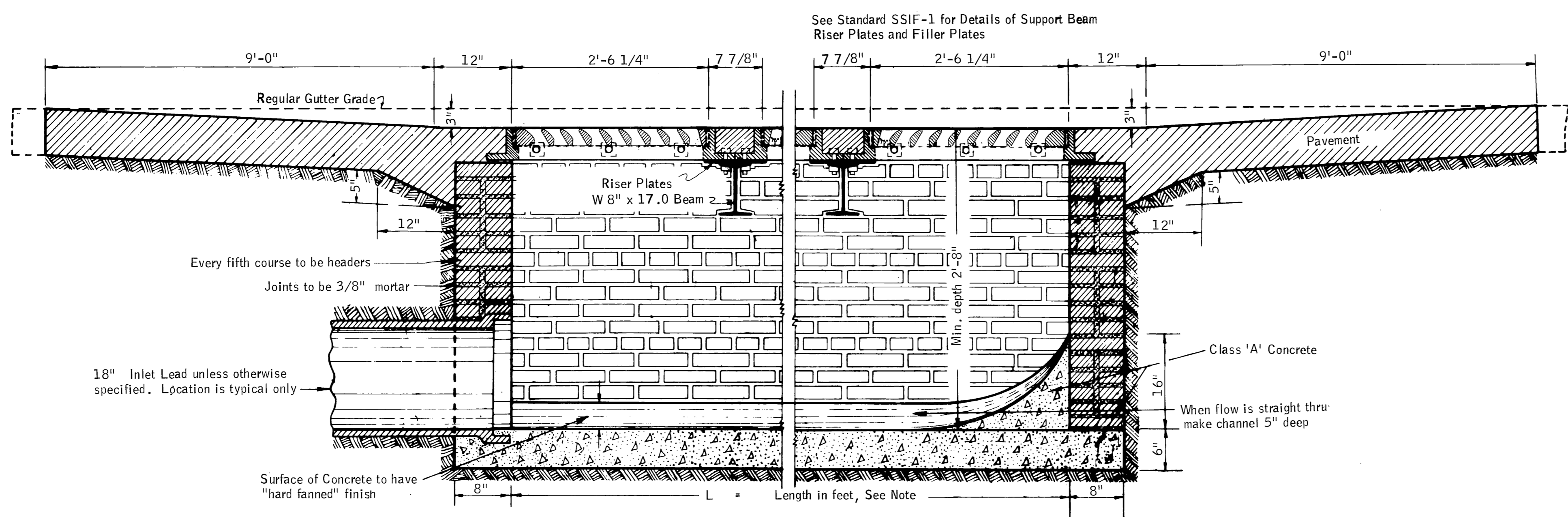
Walls of Storm Sewer Inlets may be of Brick Masonry as shown or of poured Class 'A' Concrete to the same dimensions or an approved Precast Concrete Unit. Measurements will be by the Cubic Foot and Payment will be at the Unit Price Bid for Inlet.



PLAN



SECTION B-B



SECTION A-A

Place 2 1/2" x 9" long Pipe to drain subgrade during construction operations. Plug with inlet mortar during surfacing operations. Cost to be included in other items of work.

Place Additional 2 1/2" x 9" Pipe to drain subgrade if directed by the Engineer.

BASIS OF PAYMENT		
ITEM NO.	ITEM	UNIT
509.06(B)	Class "A" Concrete for Small Structures	C.Y.
611.06 (E)	Inlet	C.F.
611.06 (G)	Inlet Frame and Grate	E.A.

APPROVED BY				
RURAL DES. ENGR.	URBAN DES. ENGR.	BRIDGE ENGINEER	CONST. ENGINEER	ASS'T. DIR./DES.
R. B. ...	D. K.
DATE 8/19/82	DATE 8-14-84	DATE 8-15-84	DATE 8-15-84	DATE 8/11/84
Design	Drawn	Checked	Approved	Squad
OKLA. DEPT. OF TRANSPORTATION STANDARD STORM SEWER INLET (MULTIPLE DOUBLE GRATING)				
SSI-7-12				