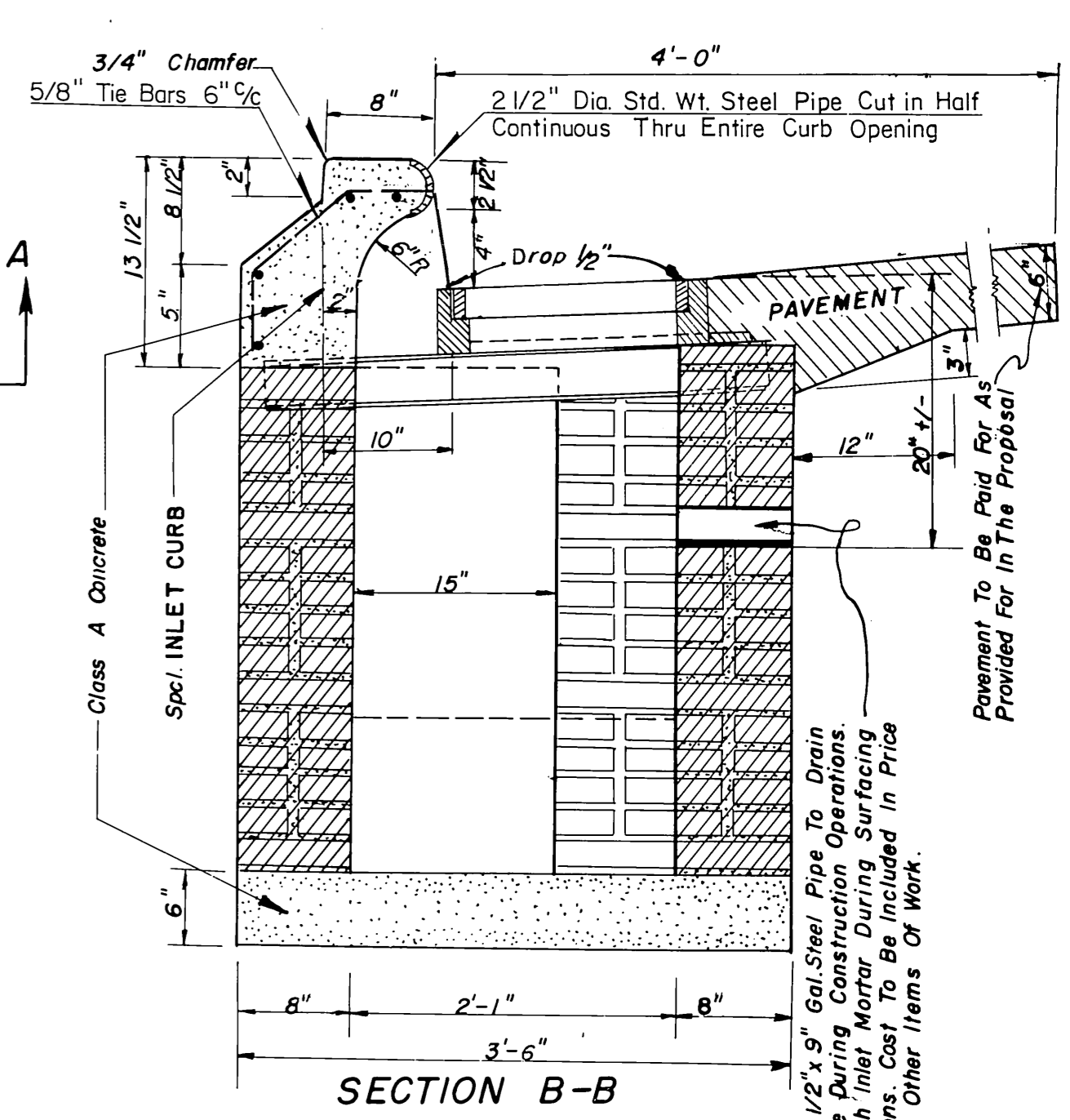
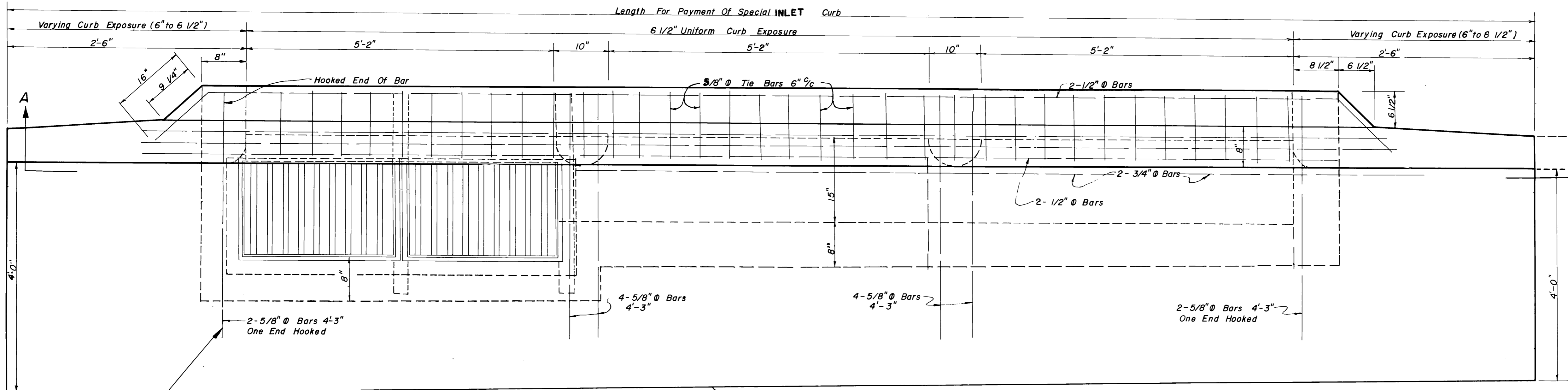


DESCRIPTION	REVISIONS	DATE
PAY ITEM NO'S 8 REDRAW GRATES	LGC	5/87

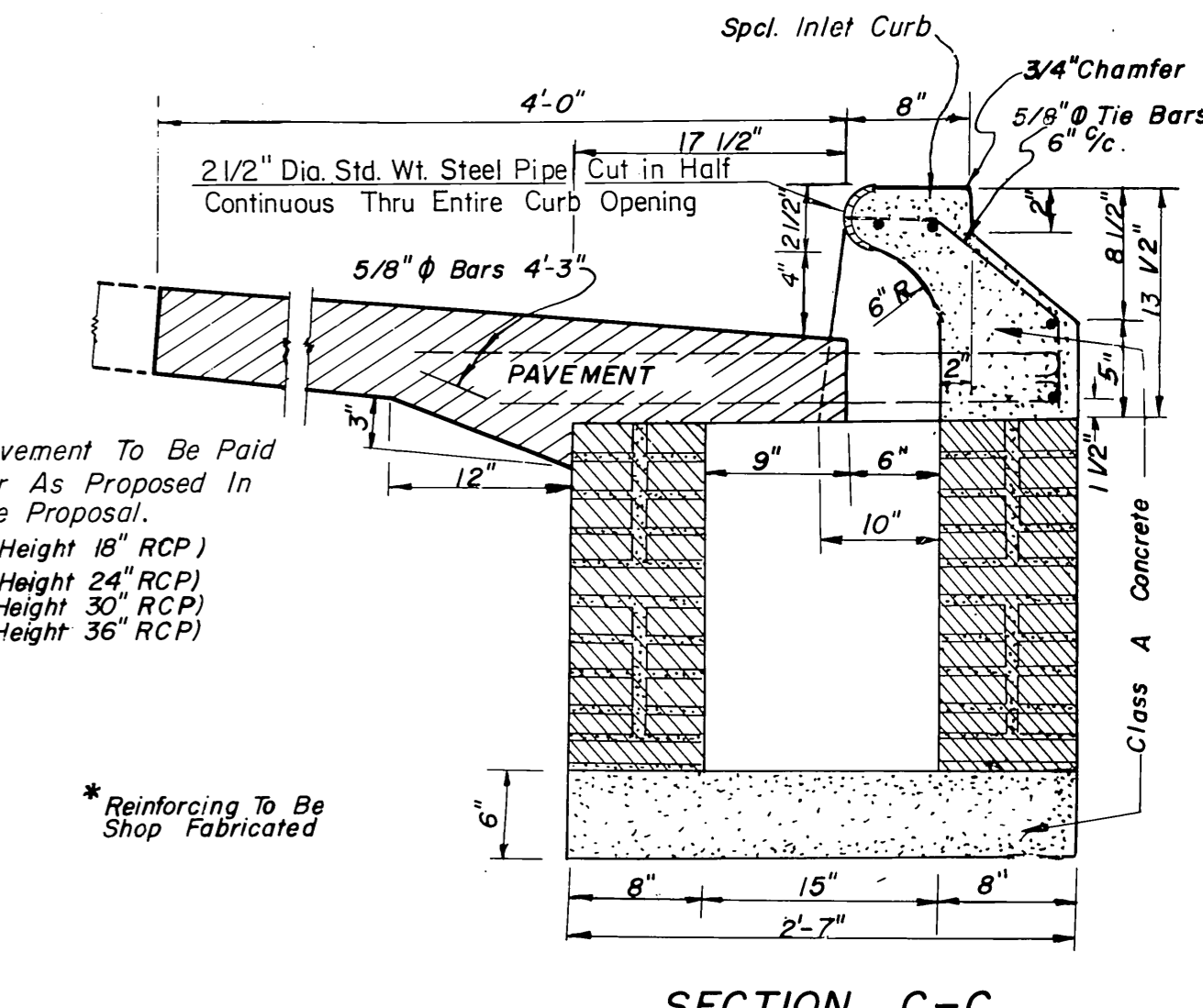
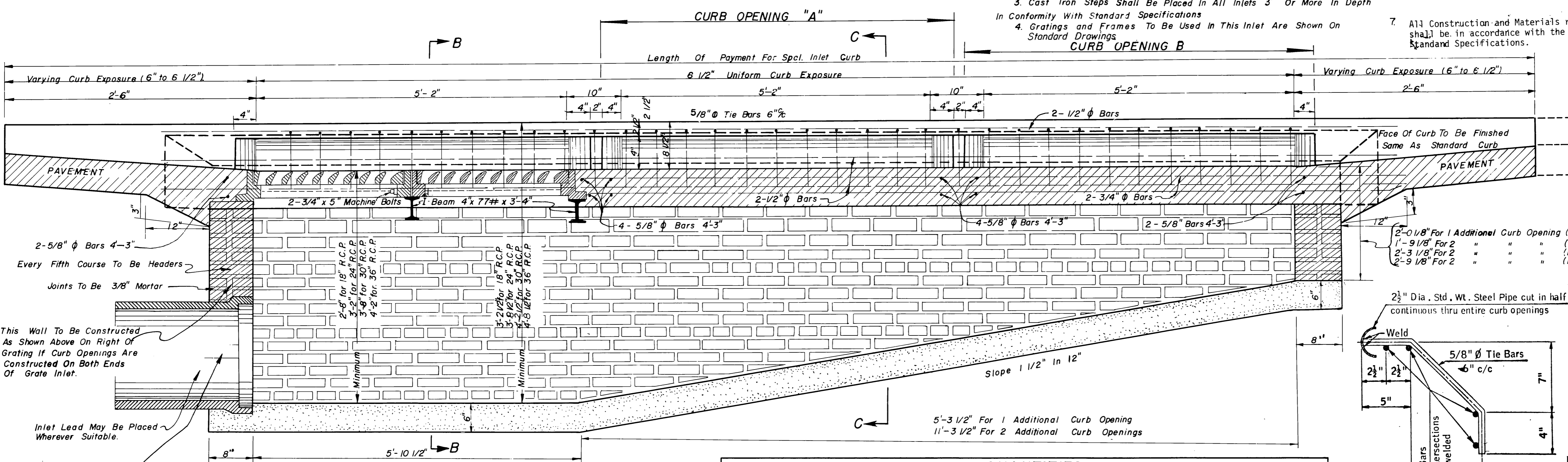


Note: Walls Of Storm Sewer Inlets May Be Of Brick Masonry As Shown Or Of Poured Class A Concrete To The Same Dimensions.
Measurement Will Be By The Cubic Foot And Payment Will Be By The Unit Price Bid For Inlet.

PLAN

GENERAL NOTES

- When The Inlet Is Built In New Pavement, The Pavement Adjacent To The Inlet Shall Be Monolithic With The New Pavement and Conform To The Plans and Specifications Thereof.
- When The Inlet Is Built In Existing Pavement, The Type Of Pavement Adjacent To The Inlet Shall Conform To The Existing Pavement Slab Unless Otherwise Provided In The Special Provisions.
- Cast Iron Steps Shall Be Placed In All Inlets 3' Or More In Depth In Conformity With Standard Specifications.
- Gratings and Frames To Be Used In This Inlet Are Shown On Standard Drawings.
- These Inlets Shall Be Designated On The Plans as Inlet No. 2A (A-B) Indicate Number and Location Of Additional Curb Openings.
- Basis Of Payment For Inlets Will Be Upon The Following Items As Designated In The Proposal:
- All Construction and Materials requirements shall be in accordance with the current Standard Specifications.



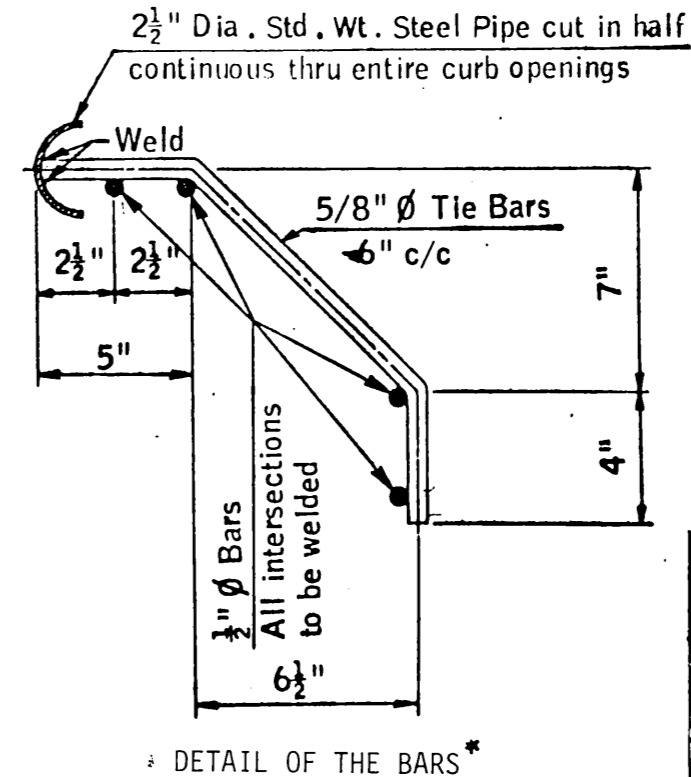
Size Of Inlet Lead Shall Be As Noted On Plans (For Inlet With 1 Additional Curb Opening Use 18" or 24" R.C. Pipe. For Inlet With 2 Additional Curb Openings Use 24", 30", or 36" R.C. Pipes.)

SECTION A-A

BASIS OF PAYMENT		
ITEM NO.	ITEM	UNIT
509.06(B)	Class A Concrete For Small Structures	C. Y.
611.06(F)	Special Inlet Curb	L. F.
611.06(E)	Inlet	C. F.

	QUANTITIES (INCLUDING DOUBLE GRATINGS)					
	ONE CURB OPENING (A)		TWO CURB OPENINGS (A-B)		TWO CURB OPENINGS (A-A)	
SIZE OF INLET LEAD	Minimum Height	Additional INLET Per Vt. Ft.	Minimum Height	Additional INLET Per Vt. Ft.	Minimum Height	Additional INLET Per Vt. Ft.
* 18" - 24"			* 24" - 30" - 36"		* 24" - 30" - 36"	
Class A Concrete	C.Y.	.71	1.00		1.00	
Special Inlet Curb	L.F.	16.17	22.17	27.56	22.17	27.56
Inlet	C.F.	36.91	57.11	63.07	63.07	63.07
Inlet Frame and Grate	Each	2	2	2	2	2

* Inlet Quantities as Shown are Quantities for Minimum Height of Smaller Inlet Lead as Noted Above.



RECORD	BY	DATE
DESIGN		
DETAIL		
TRACED	JET	8/58
CHECKED	EW	8/58
APPROVED	JBM	8/58

OKLAHOMA DEPARTMENT OF TRANSPORTATION
OKLAHOMA CITY, OKLAHOMA

STANDARD STORM SEWER INLET
DESIGN NO. 2A (DOUBLE GRATE WITH ADDITIONAL CURB OPENINGS)

FILE

RURAL/URBAN DESIGN *Sub-5-20-37*