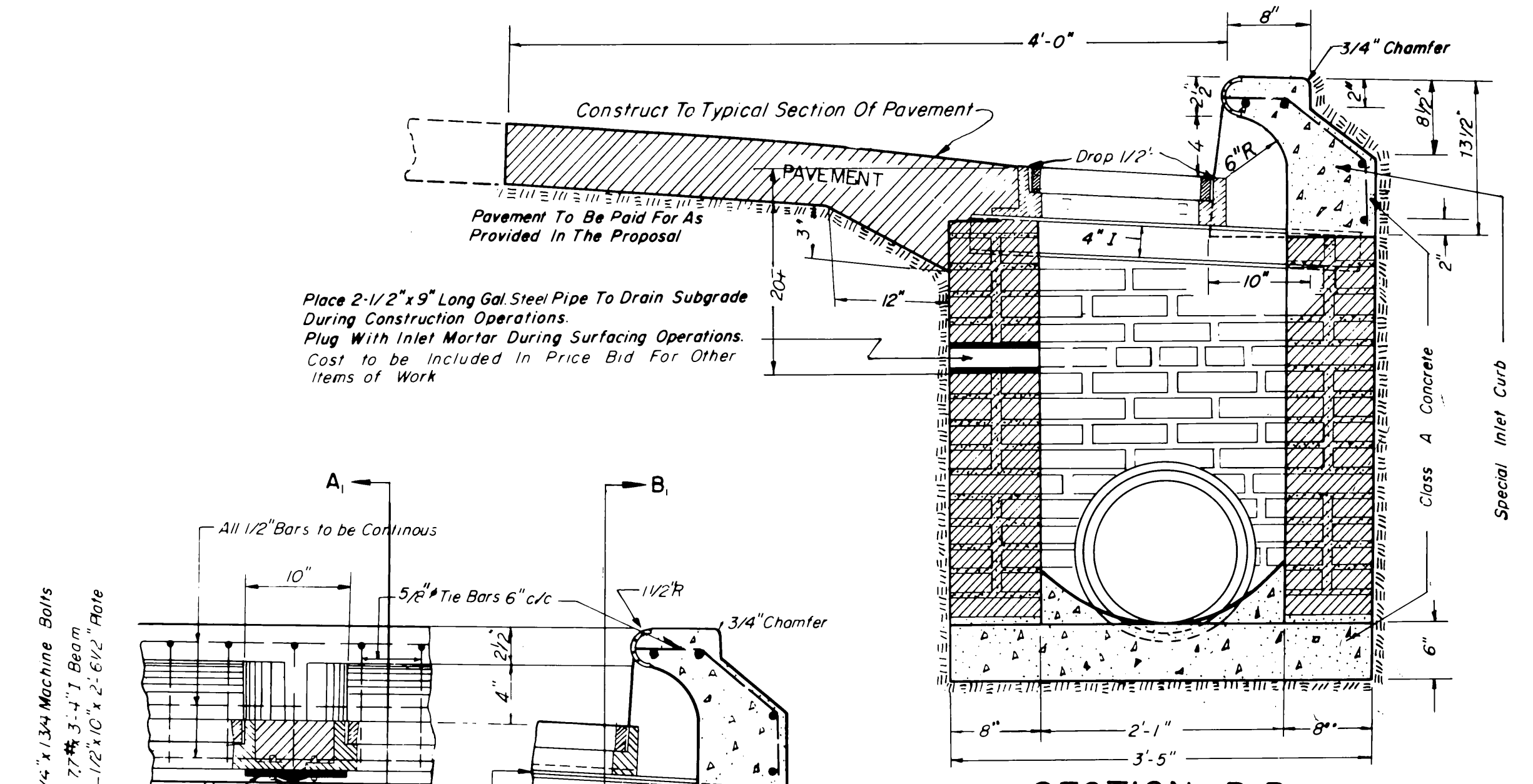


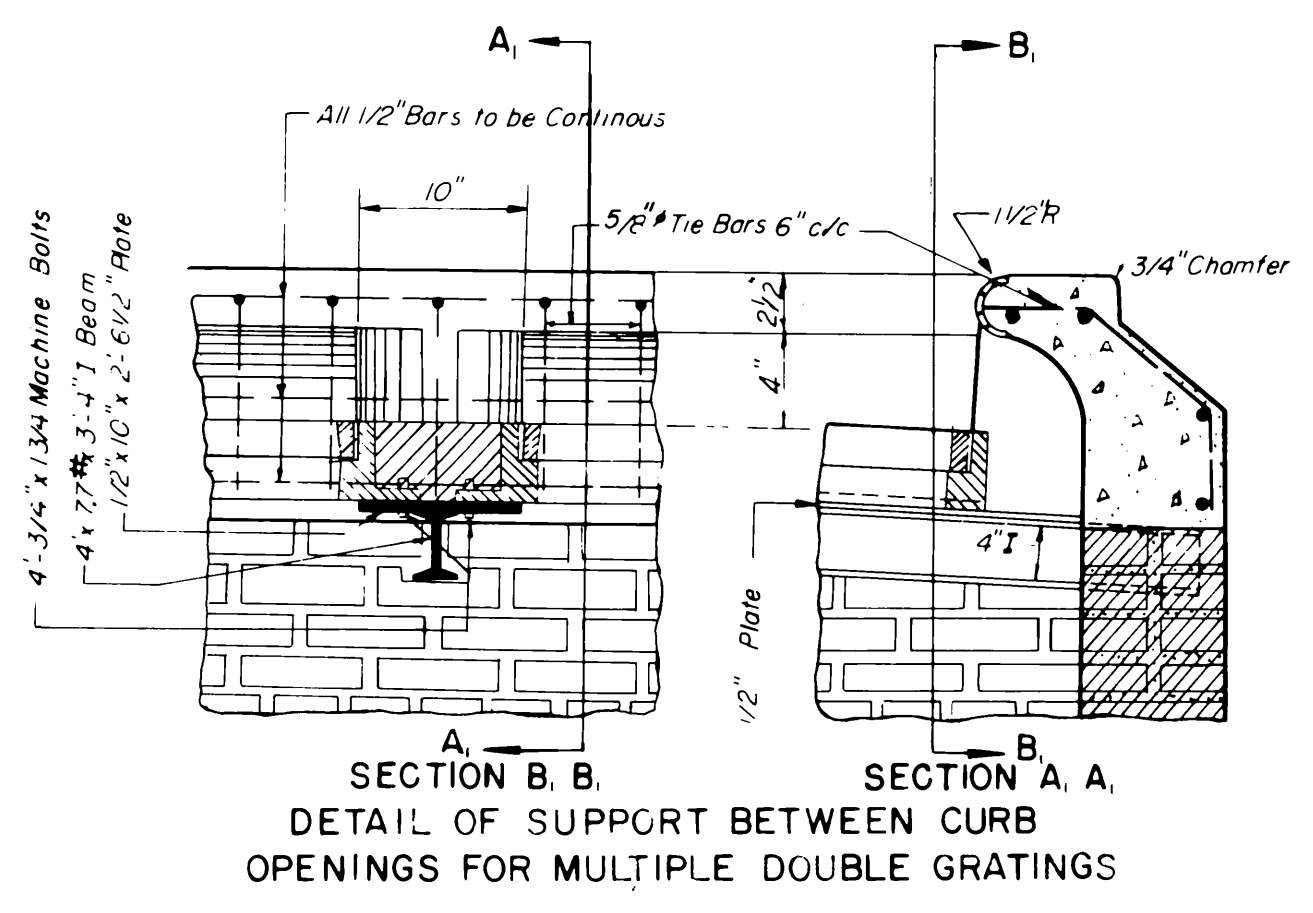
PLAN

5/8" # Bars 4'-3"  
Cost of These Bars To Be Included  
in Price Bid For Spcl. INLET CURB.

Note Walls of Storm Sewer Inlets May Be of  
Brick Masonry As Shown or of Poured  
Class A Concrete To The Same Dimensions  
Measurement Will Be By The Cubic Foot  
And Payment Will Be At The Unit Price  
Bid For "Inlet."



SECTION B-B

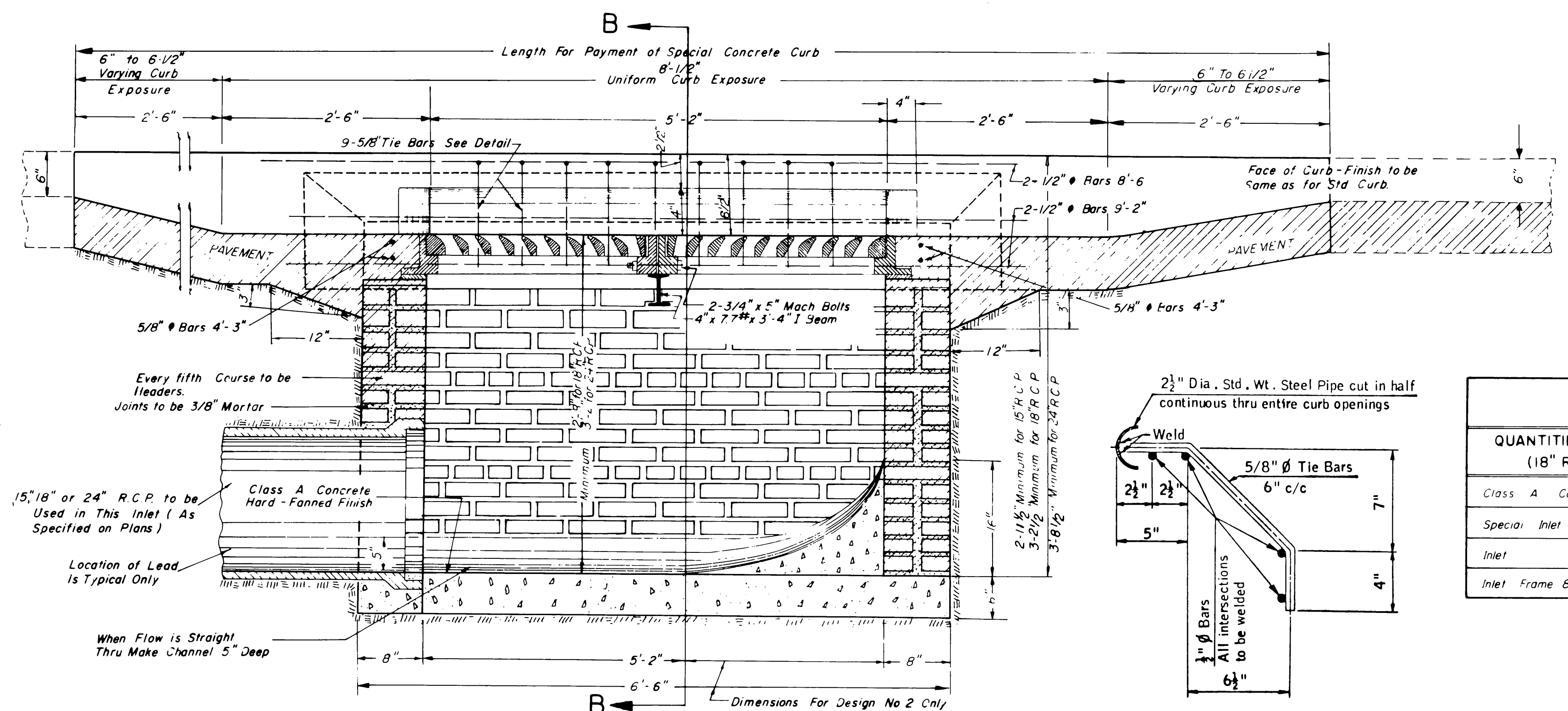


SECTION A, A  
SECTION B, B  
DETAIL OF SUPPORT BETWEEN CURB  
OPENINGS FOR MULTIPLE DOUBLE GRATINGS

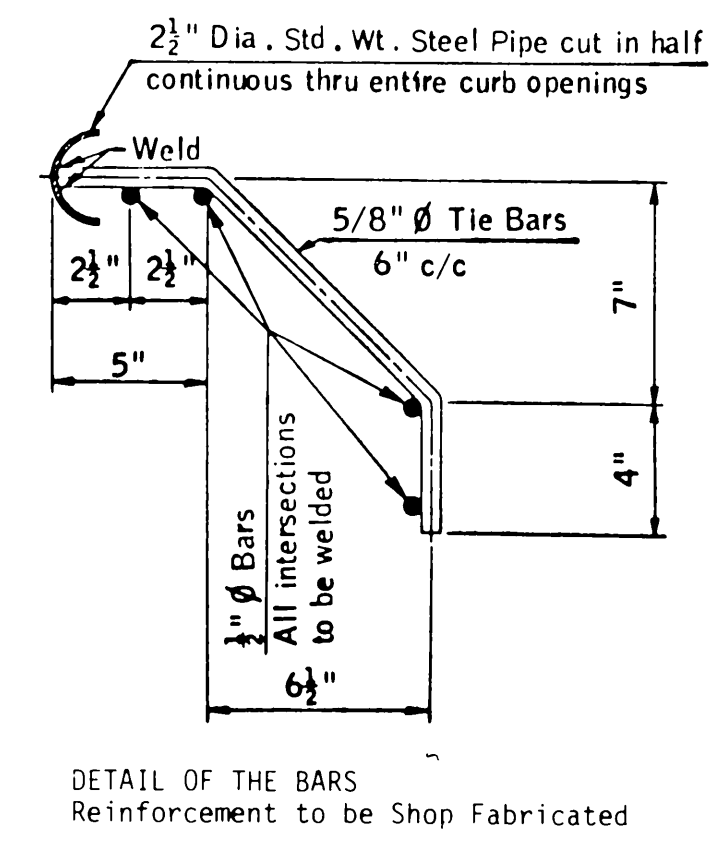
BASIS OF PAYMENT		
ITEM NO	ITEM	UNIT
509.06(B)	Class A Concrete for Small Structures	C, Y.
611.06(F)	Special Inlet Curb	L, F.
611.06(E)	Inlet	C, F.

GENERAL NOTES

- When the inlet is built in new pavement, the pavement adjacent to the inlet shall be monolithic with the new pavement and conform to the plans and specifications there-of.
- When the inlet is built in existing pavement the type of pavement adjacent to the inlet shall conform to the existing pavement unless otherwise provided in the special provisions.
- Cast iron steps shall be placed in all inlets 3' or more in depth in conformity with standard specifications.
- Gratings and Frame to be used in this structure are shown on standard drawings.
- These structures shall be designated on the plans as "Inlet No. 2" or "Inlet No. 3" (Indicate the number of double gratings).
- Basis of Payment for inlets will be upon the following items as designated in the proposal:  
Cost of Reinforcing Steel Unless Otherwise Specified, Shall be in Price Bid for Items Above.  
Cost of Structural Steel I-Beams to be Included in Price Bid for Inlet Frame and Grate.
- All construction and materials requirements shall be in accordance with the current standard specifications.  
Unless otherwise specified, all exposed concrete surfaces shall have a finish in accordance with the current standard specifications.



SECTION A-A



QUANTITIES		
QUANTITIES FOR DESIGN NO.2 ONLY (18" R.C.P. - MINIMUM DEPTH)		ADDITIONAL QUANTITIES
Class A Concrete	0.41 C.Y.	Additional Inlet per Vt. Ft. Des No 2 only 11.44 C.Ft.
Special Inlet Curb	15.17 L.F.	Additional Class A Conc for each additional double grating 0.39 C.Yd
Inlet	24.76 C.Ft.	Additional Inlet for each additional double grating 17.98 C.Ft.
Inlet Frame & Grate	2 Each	Additional Inlet for each additional Vertical Ft. for each additional double grating 9.16 C.Ft.

REVISIONS				RECORD		OKLAHOMA DEPARTMENT OF TRANSPORTATION	
NO.	DESCRIPTION	BY	DATE	ITEM	BY	DATE	
	PAY ITEM NOS.; REV. INLET QUANTITIES; REDRAW GRATINGS.	LGJ	5/87	DESIGN			
				DETAIL			
				TRACED	JET	8/58	
				CHECKED	PW	8/58	
				APPROVED	JBM	9/58	

STANDARD  
STORM SEWER INLETS  
DESIGN NO.2 (DOUBLE GRATING)  
DESIGN NO.3 (MULTIPLE DOUBLE GRATING)

SSI-283-12(0.5)

July-5-20-87

176 ORG.  
OLD 4-6-89