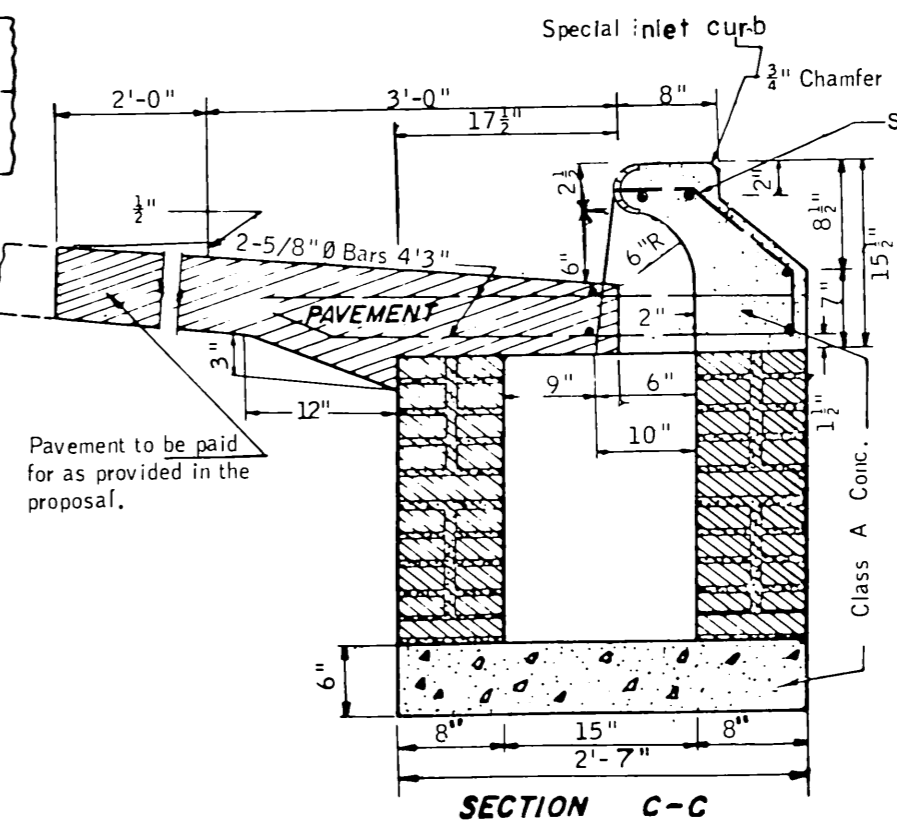
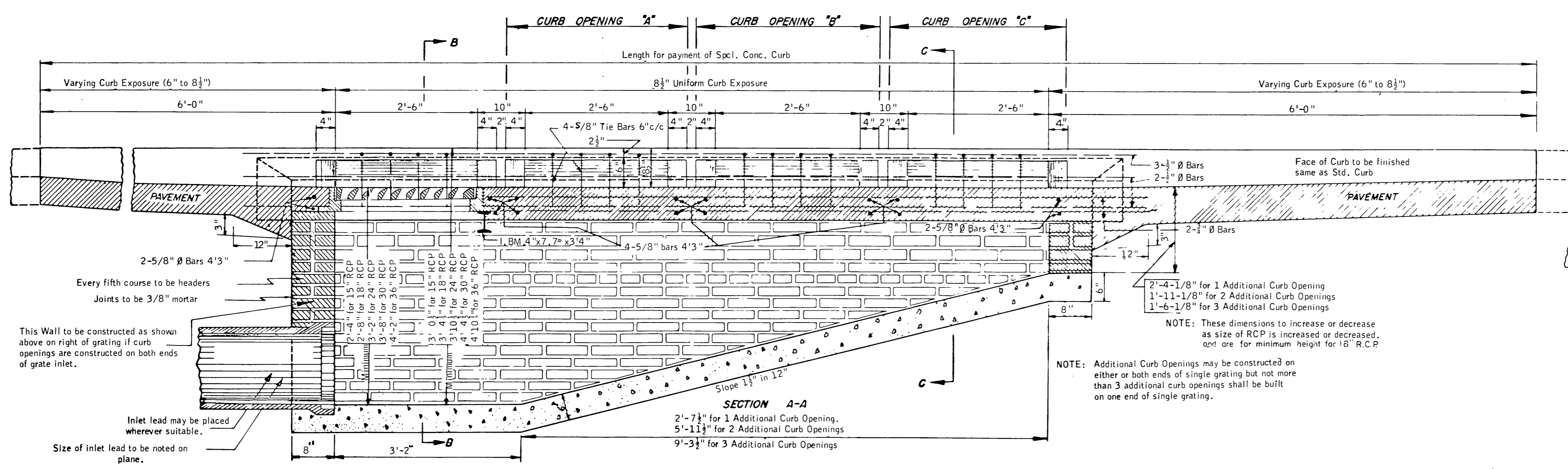
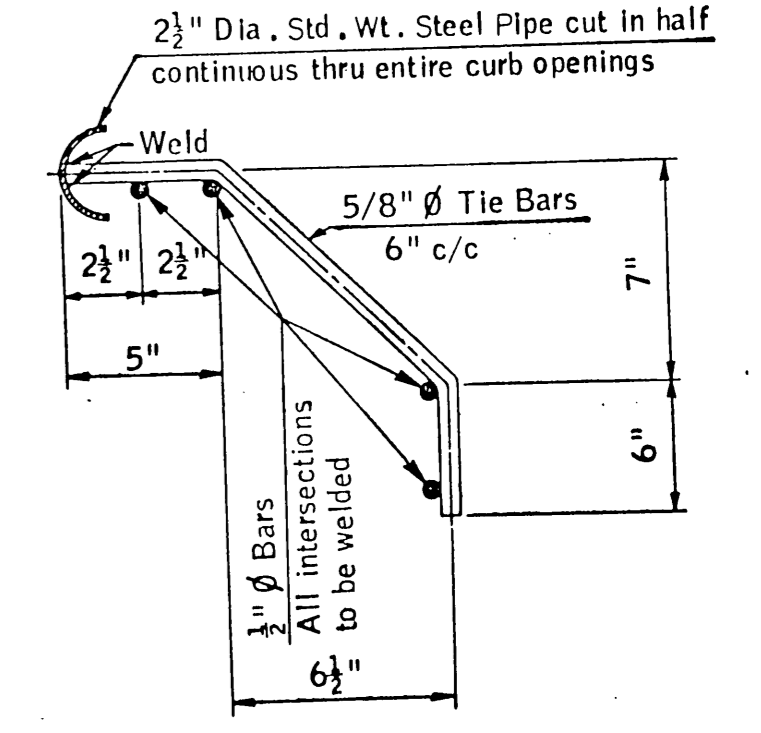
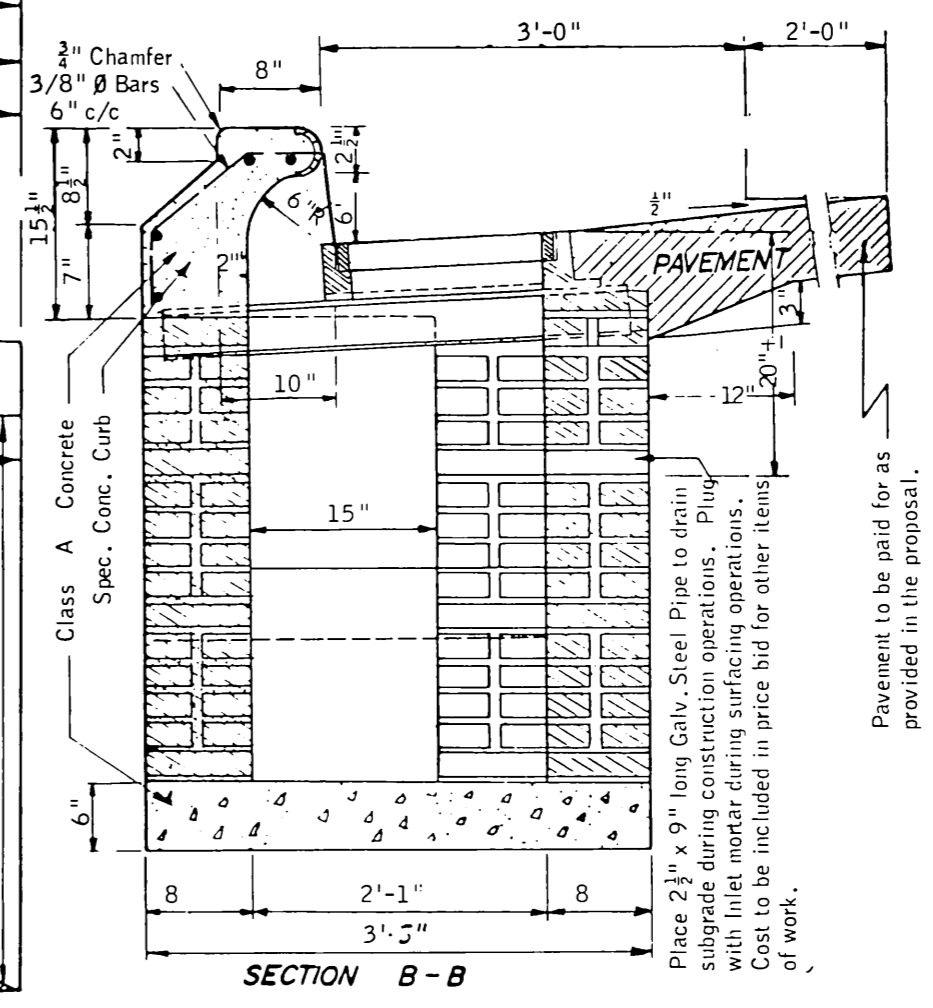
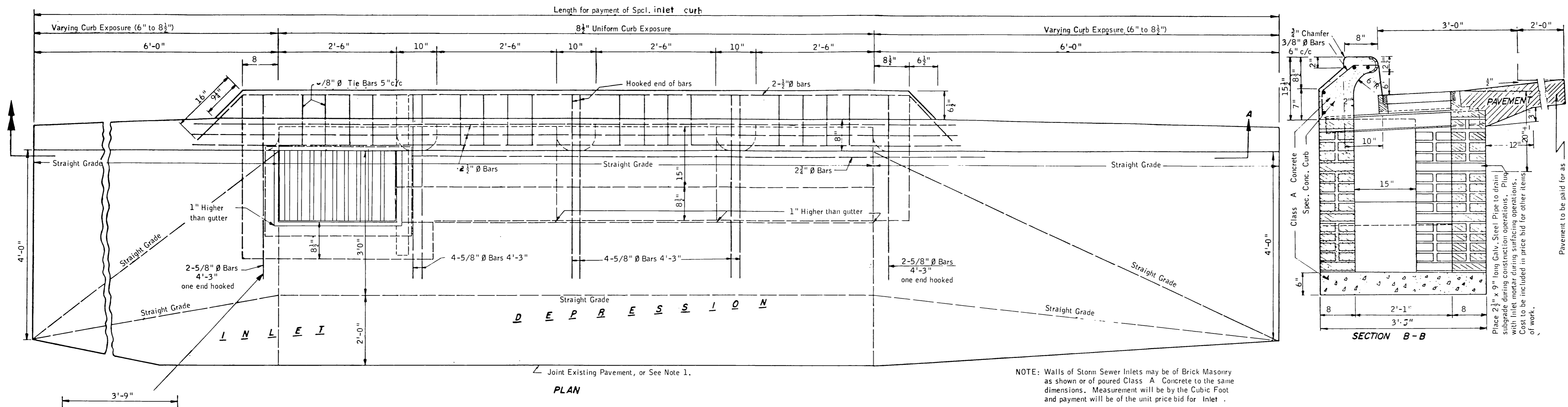


DESCRIPTION	REVISIONS	DATE
PAY ITEM NO'S. & REDRAW GRATE	LGC	5/87



BASIS OF PAYMENT		
ITEM NO.	ITEM	UNIT
509.06(B)	Class A Concrete for Saml Structures	C. Y.
611.06(F)	Special Inlet Curb	L. F.
611.06(E)	Inlet	C. F.

GENERAL NOTES

- When the inlet is built in new pavement, the pavement in the inlet depression shall be monolithic with the new pavement and conform to the plans and specifications thereof.
- When the inlet is built in existing pavement, the type of pavement in the inlet depression shall conform to that of the adjacent slab unless otherwise provided in the special provisions.
- Cast Iron Steps shall be placed in all inlets 3' or more in depth in conformity with standard specifications.
- Gratings and Frame to be used in this inlet are shown standard drawing.
- These inlets shall be designated on the plans as inlet No. 1-A(2A-B) indicate number and location of additional curb openings.
- Basis of payment for inlets will be upon the following items as designated in the proposal.
Cost of Structural Steel I-Beams to be Included in Price Bid for Inlet Frame and Grate.
Cost of Reinforcing Steel Unless Otherwise Specified, Shall be in Price Bid for Items Above.

QUANTITIES (INCLUDING SINGLE GRATING)																			
* INLET quantities are quantities for minimum height of 15" R.C. Pipe																			
	ONE CURB OPENING (A)		TWO CURB OPENINGS (A-B)		TWO CURB OPENINGS (2A)		THREE CURB OPENINGS (A-B-C)		THREE CURB OPENINGS (2A-B)		FOUR CURB OPENINGS (2-A-B-C)		FOUR CURB OPENINGS (2A-2B)		FIVE CURB OPENINGS (2A-2B-C)		SIX CURB OPENINGS (2A-2B-2C)		
	Minimum Height	Additional INLET per Vt. Ft.	Minimum Height	Additional INLET per Vt. Ft.	Minimum Height	Additional INLET per Vt. Ft.	Minimum Height	Additional INLET per Vt. Ft.	Minimum Height	Additional INLET per Vt. Ft.	Minimum Height	Additional INLET per Vt. Ft.	Minimum Height	Additional INLET per Vt. Ft.	Minimum Height	Additional INLET per Vt. Ft.	Minimum Height	Additional INLET per Vt. Ft.	
SIZE OF INLET LEAD	15" - 18"		15" - 18" - 24"		15" - 18" - 24"		24"		24"		30"		30"		36"		36"		
CLASS A CONCRETE	C.Y.	0.40	0.56		0.56		0.72		0.72		0.89		0.88		1.04		1.20		
SPECIAL INLET CURB	L.F.	17.83	12.43	21.17	16.88	21.17	16.88	24.50	21.33	24.50	21.33	27.83	25.78	27.83	25.78	31.17	30.22	34.50	34.67
INLET	C.Ft.	22.04 *	27.17 *		29.09 *		44.29		47.96		66.17		68.03		90.49		101.72		
INLET FRAME & GRATE	EA.	1	1		1		1		1		1		1		1		1		

OKLAHOMA DEPARTMENT OF TRANSPORTATION

STANDARD STORM SEWER INLET

DESIGN NO. 1-A (SINGLE GRATE WITH ADDITIONAL CURB OPENINGS)

SSI-1-A-12

RURAL/URBAN DESIGN

86

Sub 5-20-87

OLD 4-6-88