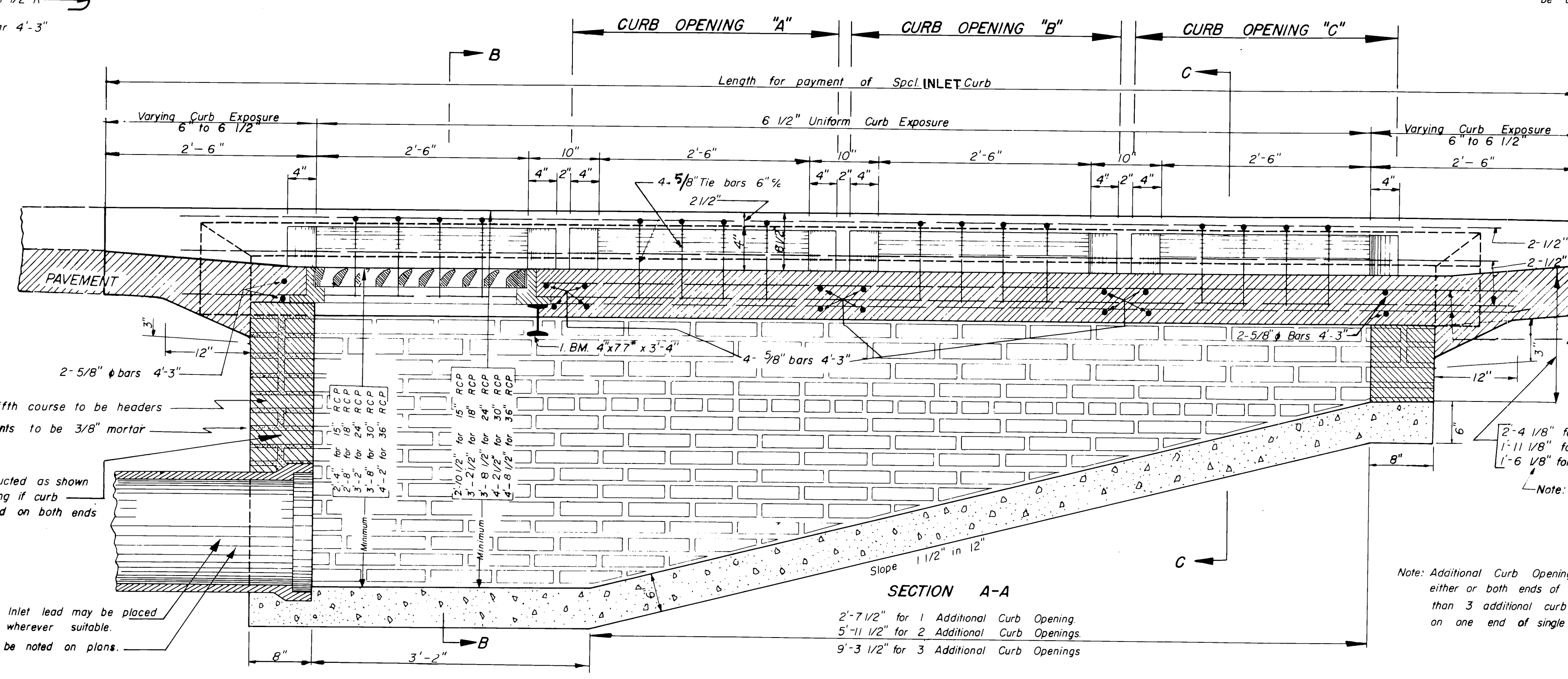
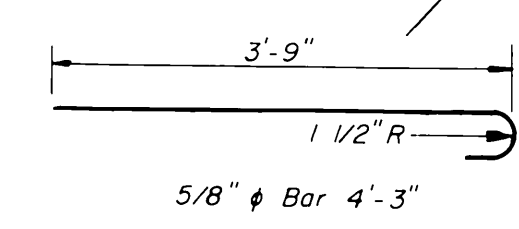
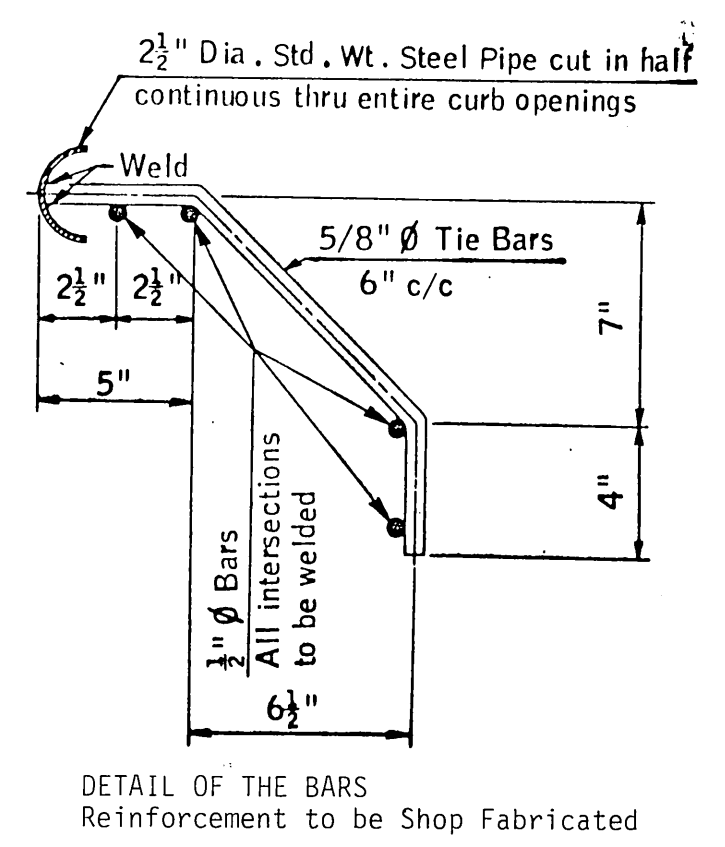
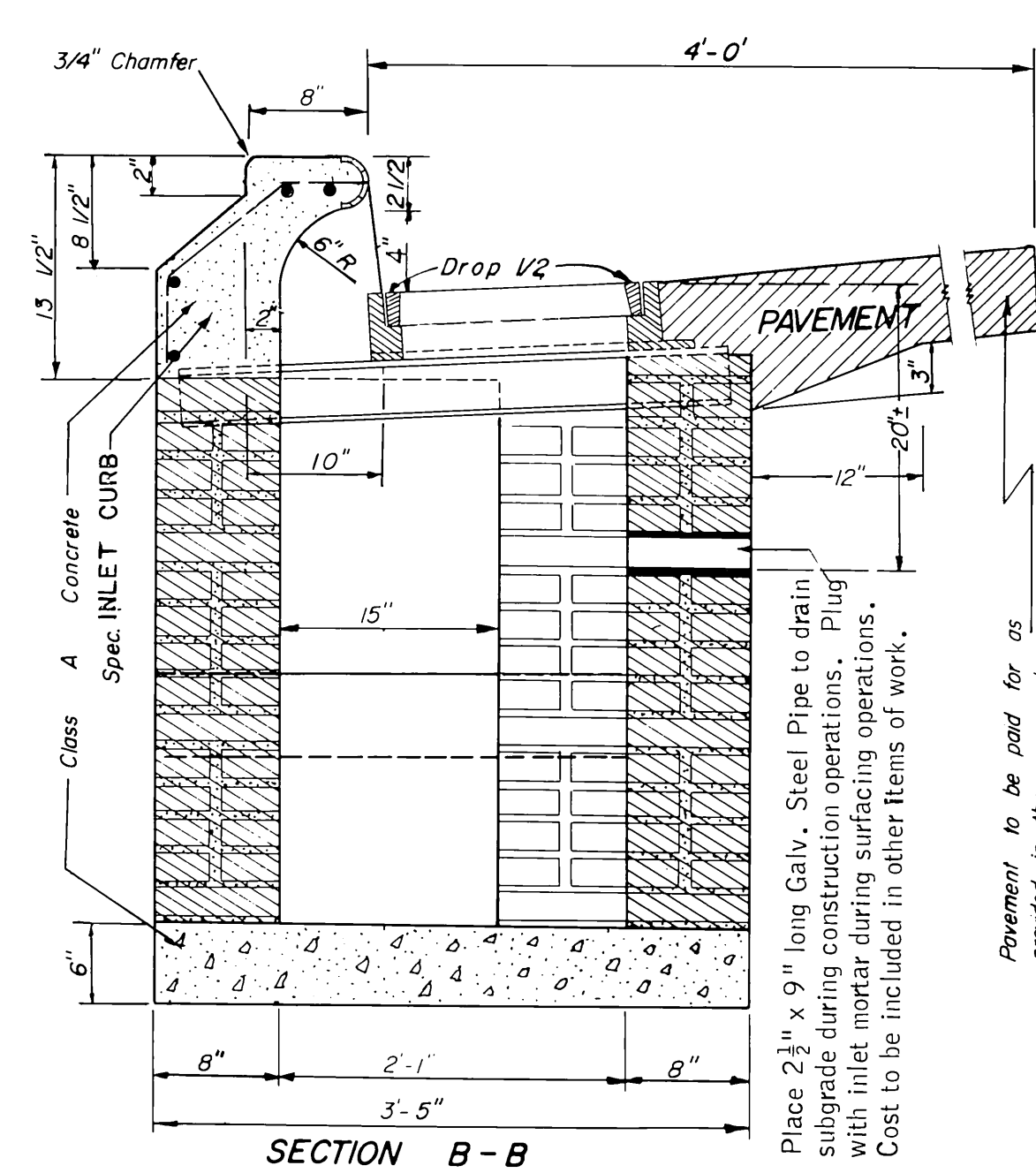
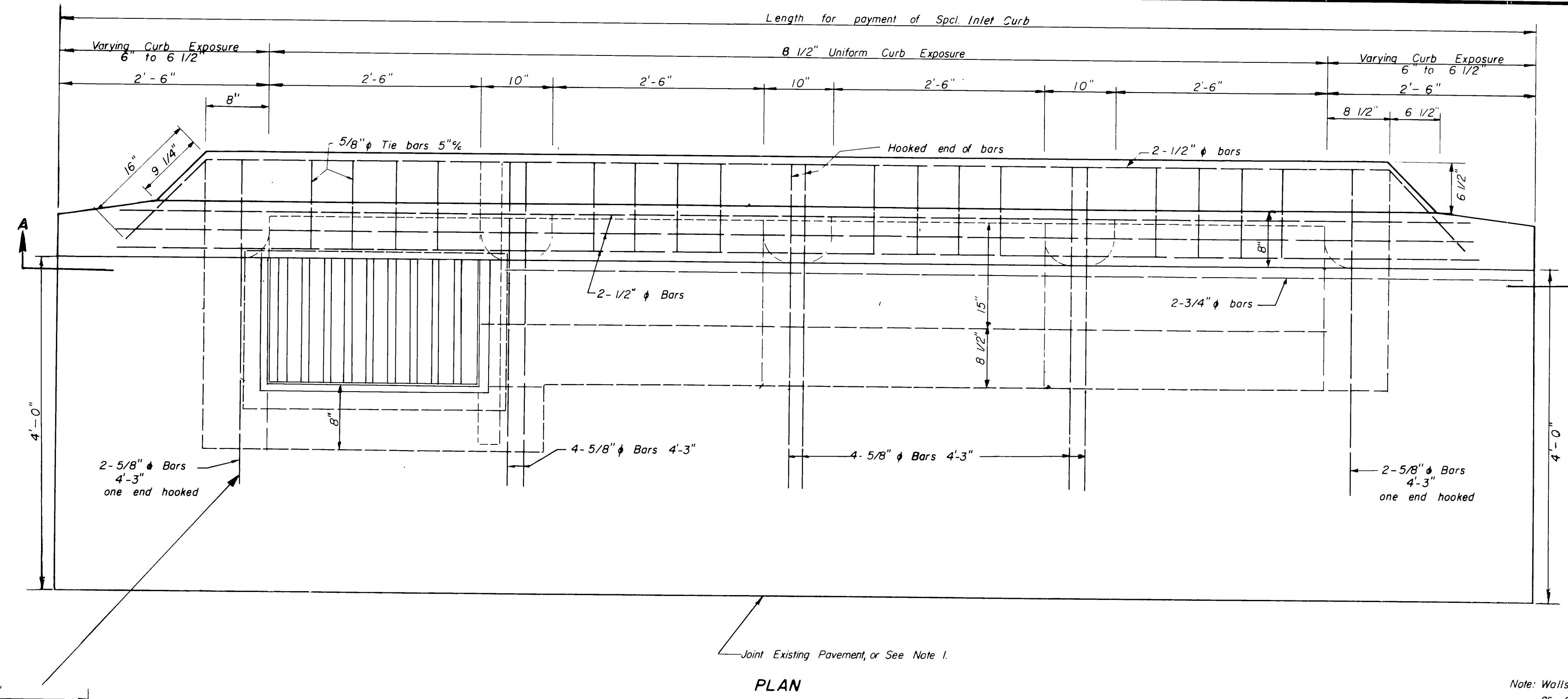


DESCRIPTION	REVISIONS	DATE
PAY ITEM NO'S. & REDRAW GRATE	LGC	5/87



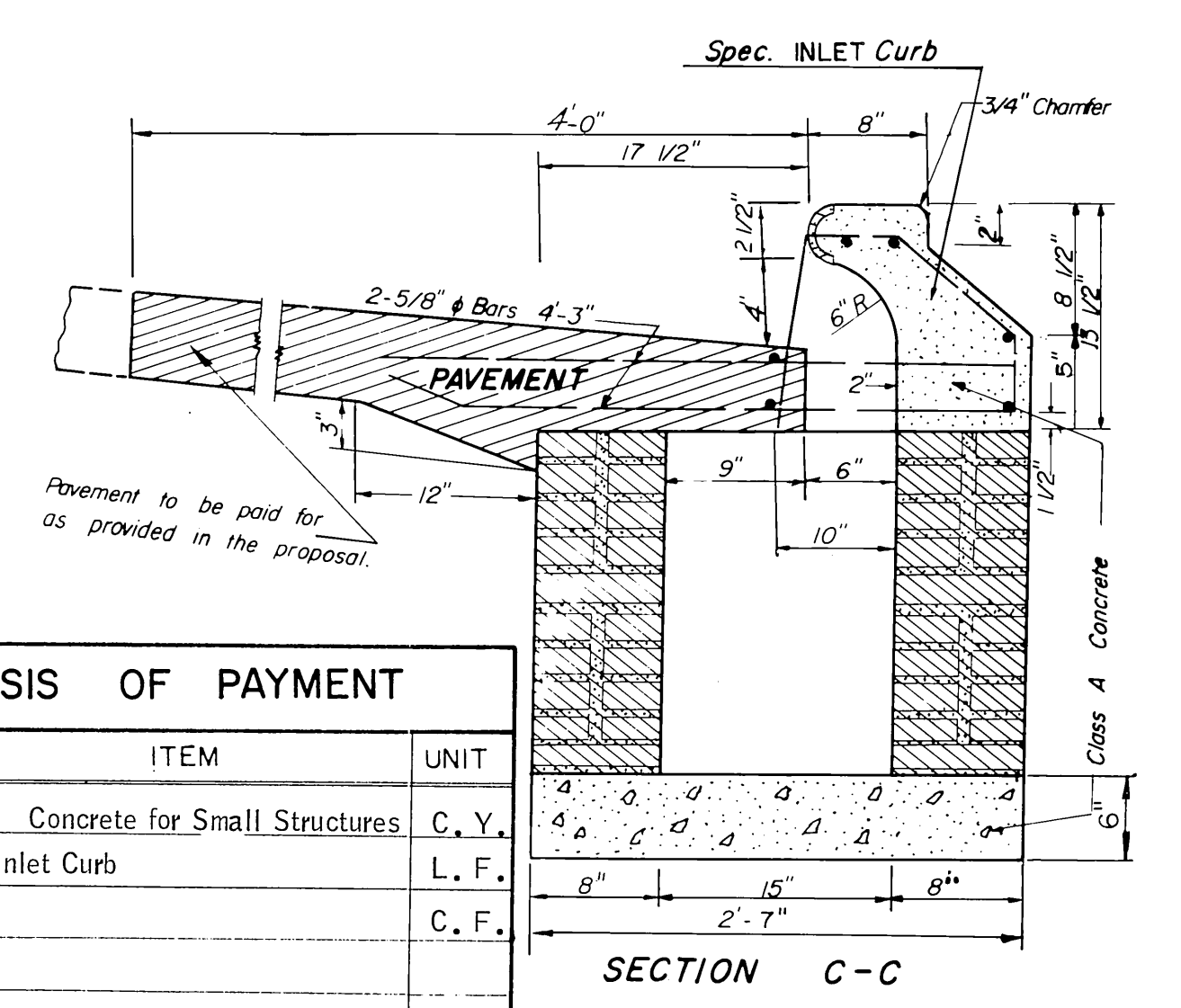
Note: Walls of Storm Sewer Inlets may be of Brick Masonry as shown or of poured Class A Concrete to the same dimensions. Measurement will be by the Cubic Foot and payment will be at the unit price bid for "Inlet".

**GENERAL NOTES**

- When the inlet is built in new pavement, the pavement adjacent to the inlet shall be monolithic with the new pavement and conform to the plans and specifications thereof.
- When the inlet is built in existing pavement, the type of pavement adjacent to the inlet shall conform to the existing pavement unless otherwise provided in the special provisions.
- Cast Iron Steps shall be placed in all inlets 3' or more in depth in conformity with standard specifications.
- Gratings and Frame to be used in this inlet are shown on standard drawings.
- These inlets shall be designated on the plans as Inlet No. 1(A)(2A-B) indicate number and location of additional curb openings.
- Basis of payment for inlets will be upon the following items as designated in the proposal:

Class A Concrete	..... C.Y.	Cost of Structural Steel I-Beams	..... L.F.
Special Inlet Curb	..... L.F.	to be Included in Price Bid for Inlet Frame and Grate.	
Inlet	..... C.F.		
Cast Iron B Grate	..... Each		

All Construction and Materials requirements shall be in accordance with the current Standard Specifications. Unless otherwise specified, all exposed concrete surfaces shall have a finish in accordance with the current standard specifications.



**QUANTITIES (INCLUDING SINGLE GRATING)**

SIZE OF INLET LEAD	ONE CURB OPENING (A)		TWO CURB OPENINGS (A-B)		TWO CURB OPENINGS (2A)		THREE CURB OPENINGS (A-B-C)		THREE CURB OPENINGS (2A-B)		FOUR CURB OPENINGS (2A-B-C)		FOUR CURB OPENINGS (2A-2B)		FIVE CURB OPENINGS (2A-2B-C)		SIX CURB OPENINGS (2A-2B-2C)			
	Minimum Height	Additional Inlet per Vt. Ft.	Minimum Height	Additional Inlet per Vt. Ft.	Minimum Height	Additional Inlet per Vt. Ft.	Minimum Height	Additional Inlet per Vt. Ft.	Minimum Height	Additional Inlet per Vt. Ft.	Minimum Height	Additional Inlet per Vt. Ft.	Minimum Height	Additional Inlet per Vt. Ft.	Minimum Height	Additional Inlet per Vt. Ft.	Minimum Height	Additional Inlet per Vt. Ft.		
15" - 18"	0.40	13.21	15" - 18" - 24"	0.56	14.17	15" - 18" - 24"	0.56	14.17	24"	0.72	17.50	24"	0.72	17.50	30"	0.88	20.83	30"	0.88	20.83
Class A Concrete ---C.Y.																				
Special Inlet Curb ---L.F.	10.83		14.17		14.17		17.50		17.50		20.83		20.83		24.17		27.50		27.50	
Inlet ---C.F.	22.04		27.17		27.17		29.09		29.09		34.67		34.67		30.22		30.22		30.22	
Inlet Frame & Grate ---Each																				

**BASIS OF PAYMENT**

ITEM NO.	ITEM	UNIT
509.06(B)	Class A Concrete for Small Structures	C. Y.
611.06(F)	Special Inlet Curb	L. F.
611.06(E)	Inlet	C. F.

Design	
Drawn	
Checked	LGC 5/87
Approved	CEW 5/87
Squad	Eng. Suprt. Branch

OKLAHOMA DEPARTMENT OF TRANSPORTATION  
STANDARD STORM SEWER INLET  
DES. NO. 1A (SINGLE GRATE W/ADD'L. CURB OPENING)

SSI-1A-12(0.5)

OLD 4-6-87