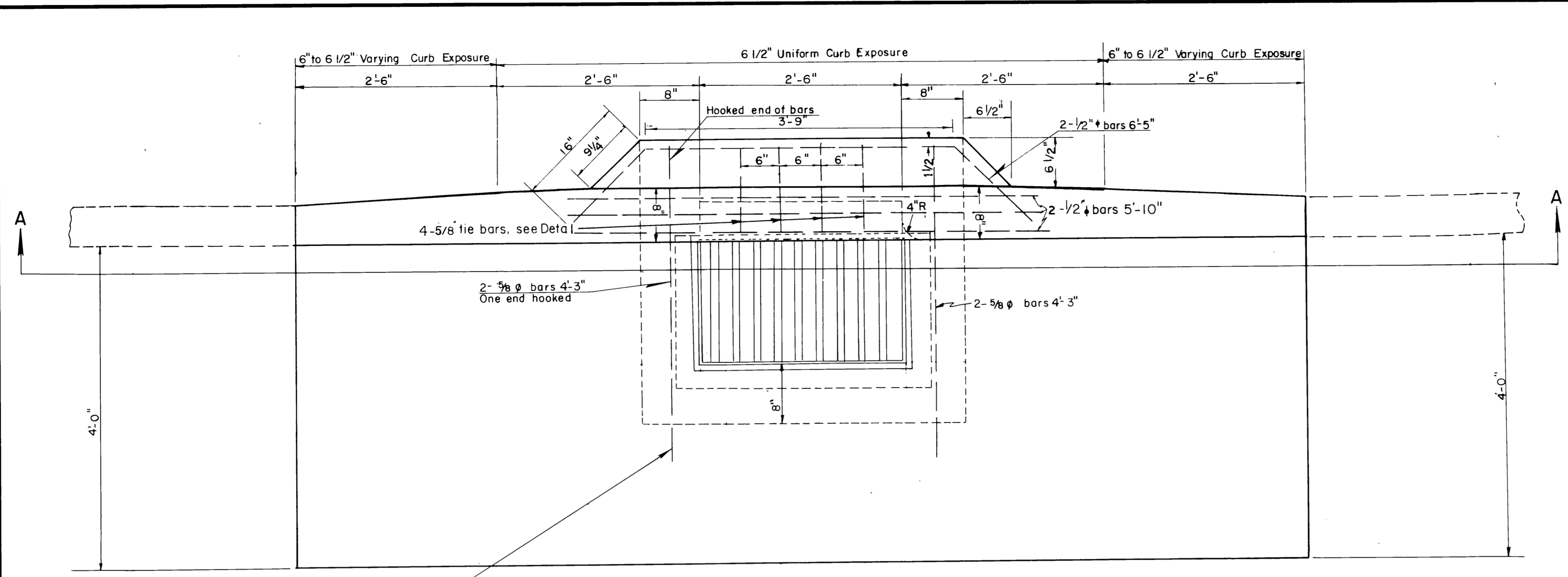


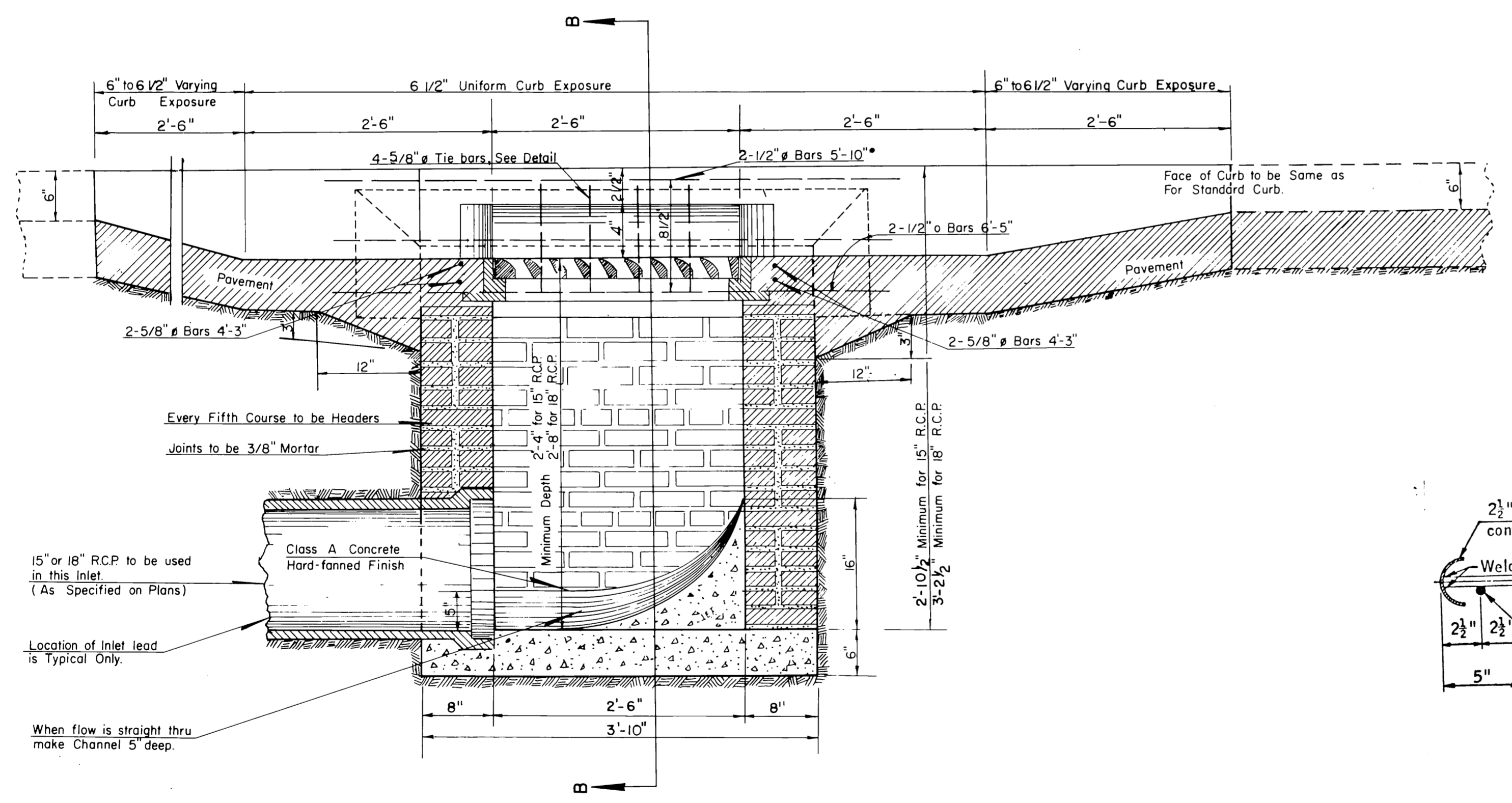
DESCRIPTION	REVISIONS	DATE
PAY ITEM NO'S.; REV. INLET		
QUANTITIES; REDRAW GRATE LGC	5/87	



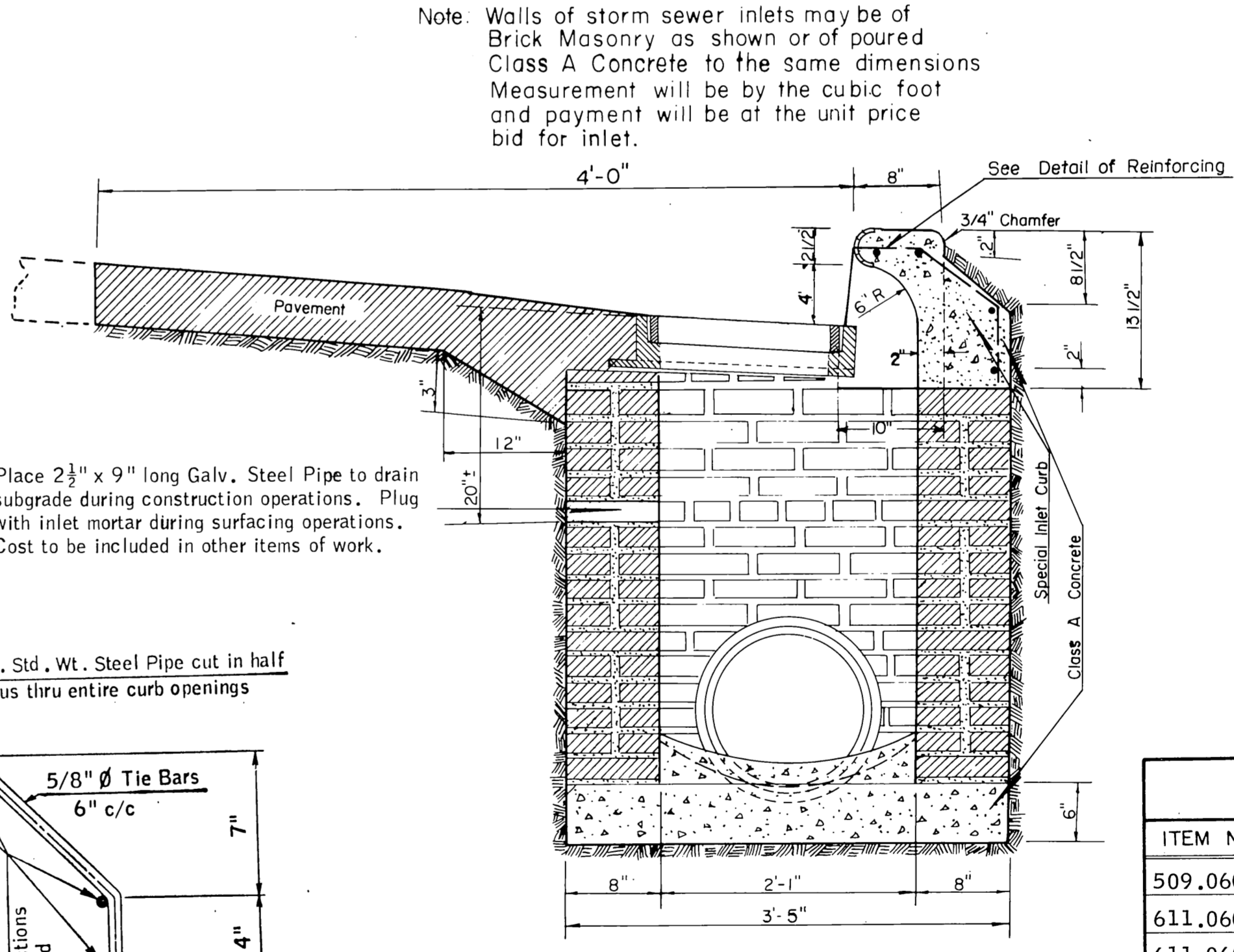
PLAN

- GENERAL NOTES**
- When the inlet is built in new pavement, the pavement adjacent to the inlet shall be monolithic with the new pavement and conform to the specifications and plans therefor.
 - When the inlet is built in existing pavement, the type of pavement adjacent to the inlet shall conform to the existing pavement unless otherwise provided in the special provisions.
 - Cast iron steps shall be placed in all inlets 3' or more in depth in conformity with standard specifications.
 - Grating and frame to be used in this structure are shown on standard drawings.
 - This structure shall be designated on the plans as Inlet No. 1
 - Basis of payment for inlets will be upon the following items as designated in the proposal.

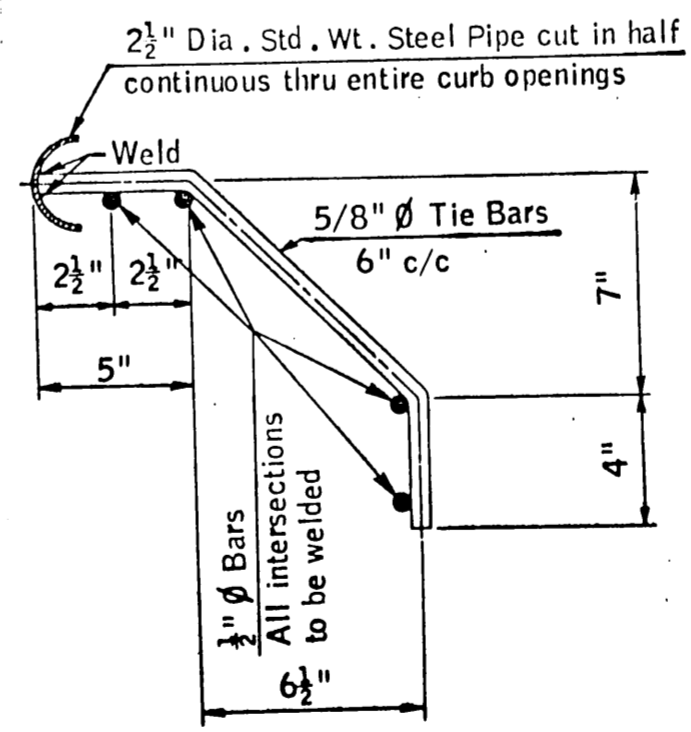
Class A Concrete	Cu. Yd.
Special Inlet Curb	L. Ft.
Inlet	Cu. Ft.
 - All construction and materials requirements shall be in accordance with the current Standard Specifications.
- Unless otherwise specified, all exposed concrete surfaces shall have a finish in accordance with the current standard specifications.



SECTION A-A



SECTION B-B



DETAIL OF THE BARS
Reinforcement to be Shop Fabricated

Note: Walls of storm sewer inlets may be of Brick Masonry as shown or of poured Class A Concrete to the same dimensions. Measurement will be by the cubic foot and payment will be at the unit price bid for inlet.

QUANTITIES
(15" R.C.P. MINIMUM DEPTH)

CLASS A CONCRETE	0.24 Cu. Yd.
SPECIAL INLET CURB	12.5 L. Ft.
INLET	14.60 Cu. Ft.
INLET FRAME & GRATE	1. EACH
ADDITIONAL INLET PER VERTICAL FOOT	7.90 Cu. Ft.

BASIS OF PAYMENT

ITEM NO.	ITEM	UNIT
509.06(B)	Class A Concrete for Small Structures	C. Y.
611.06(F)	Special Inlet Curb	L. Ft.
611.06(E)	Inlet	C. Ft.

Design	
Drawn	
Checked	LGC 5/87
Approved	CEW 5/87
Squad	Eng. Suprt. Branch

OKLAHOMA DEPARTMENT OF TRANSPORTATION
STANDARD STORM SEWER INLET
DES. NO. 1 (SINGLE GRATING)

SSI-1-12 (0.5)

85A

Rev-5-20-87

76 ORG