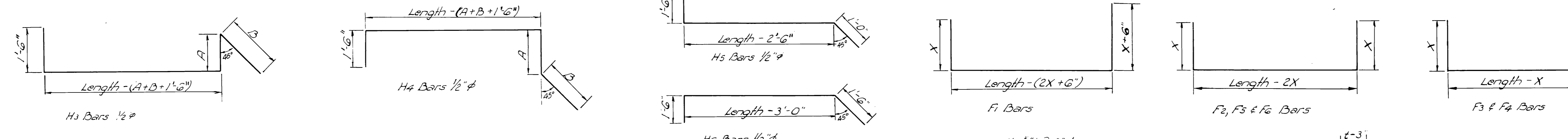
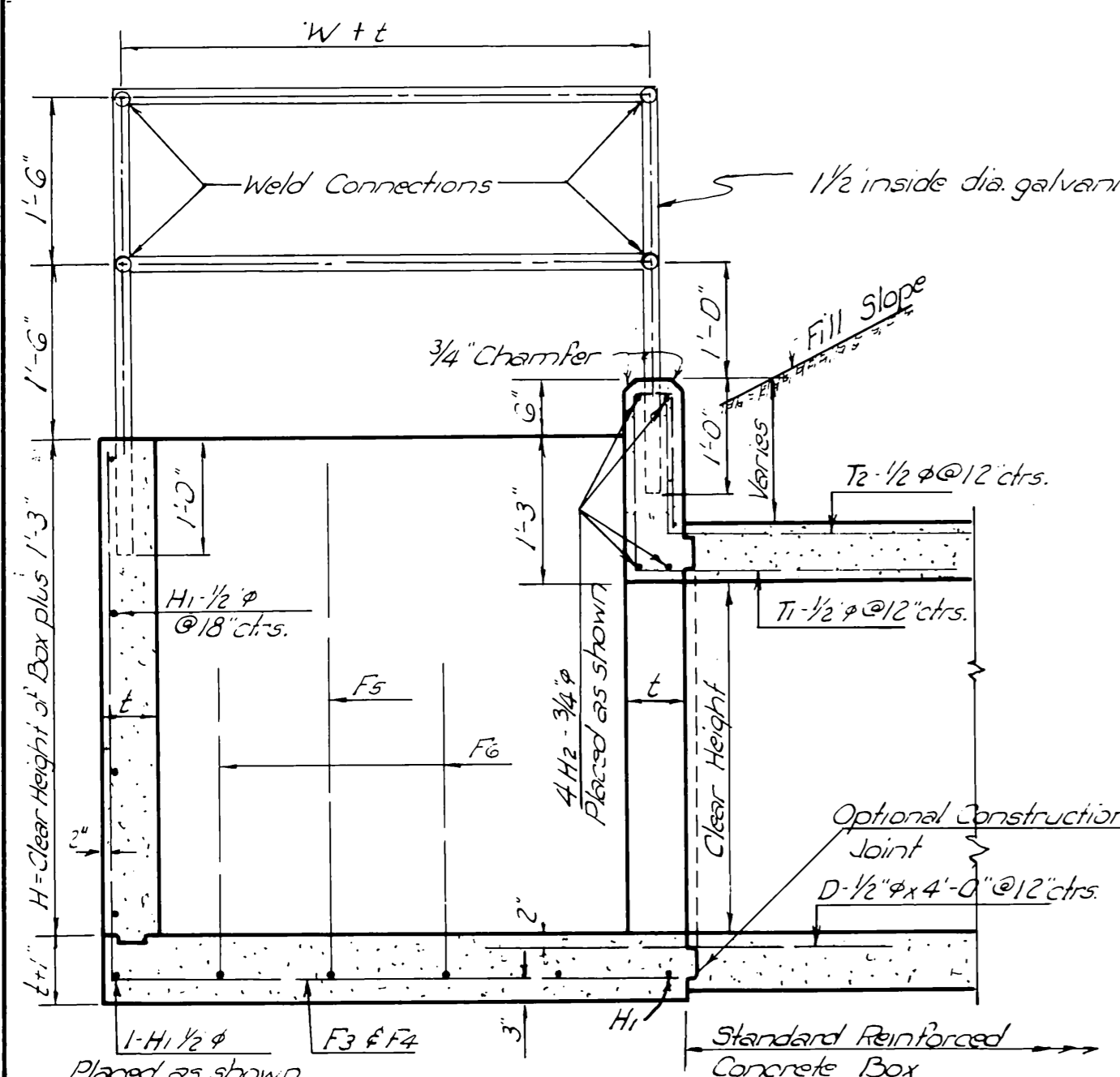


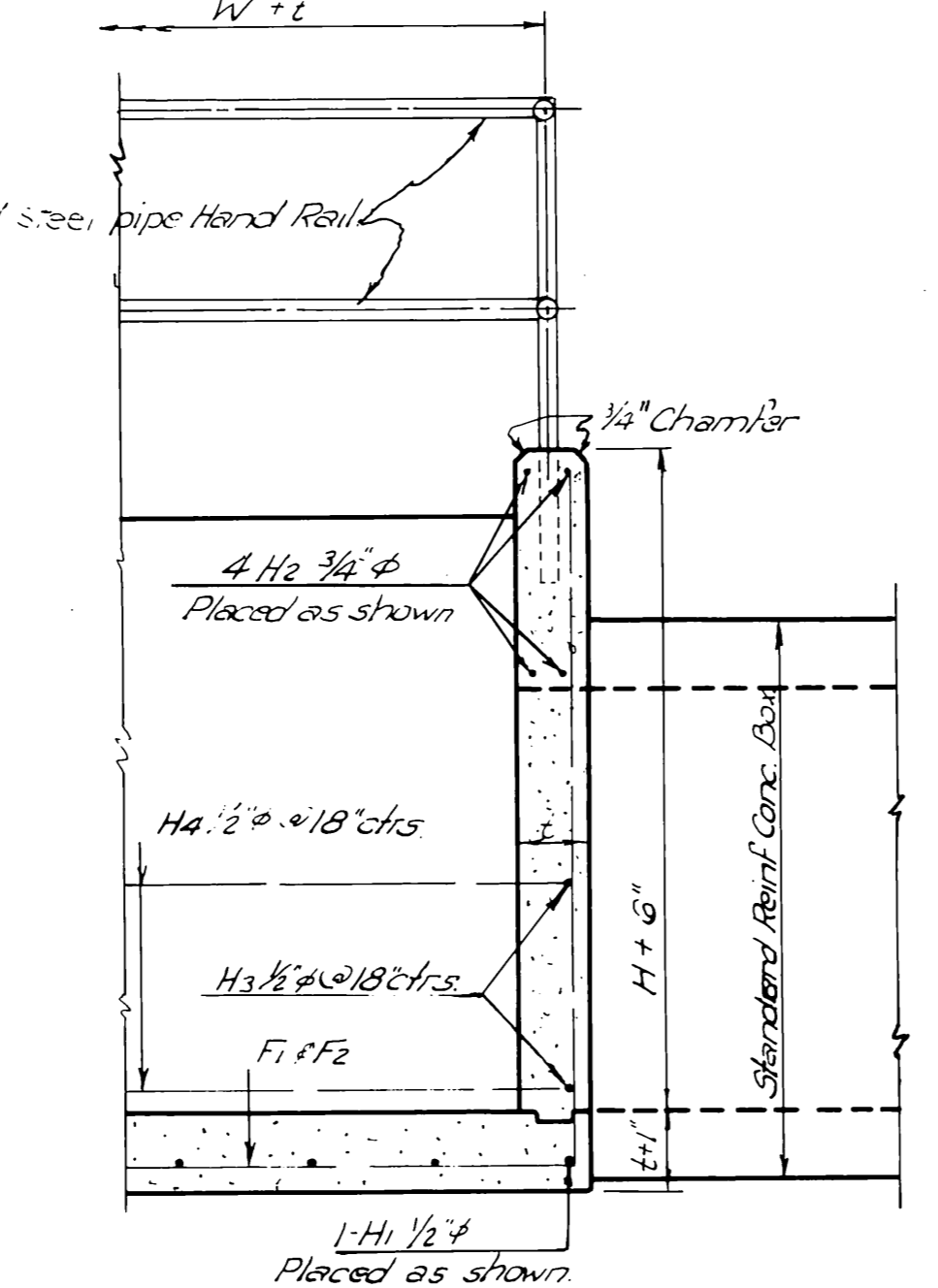
DESCRIPTION	REVISIONS	DATE
RE-ISSUE		



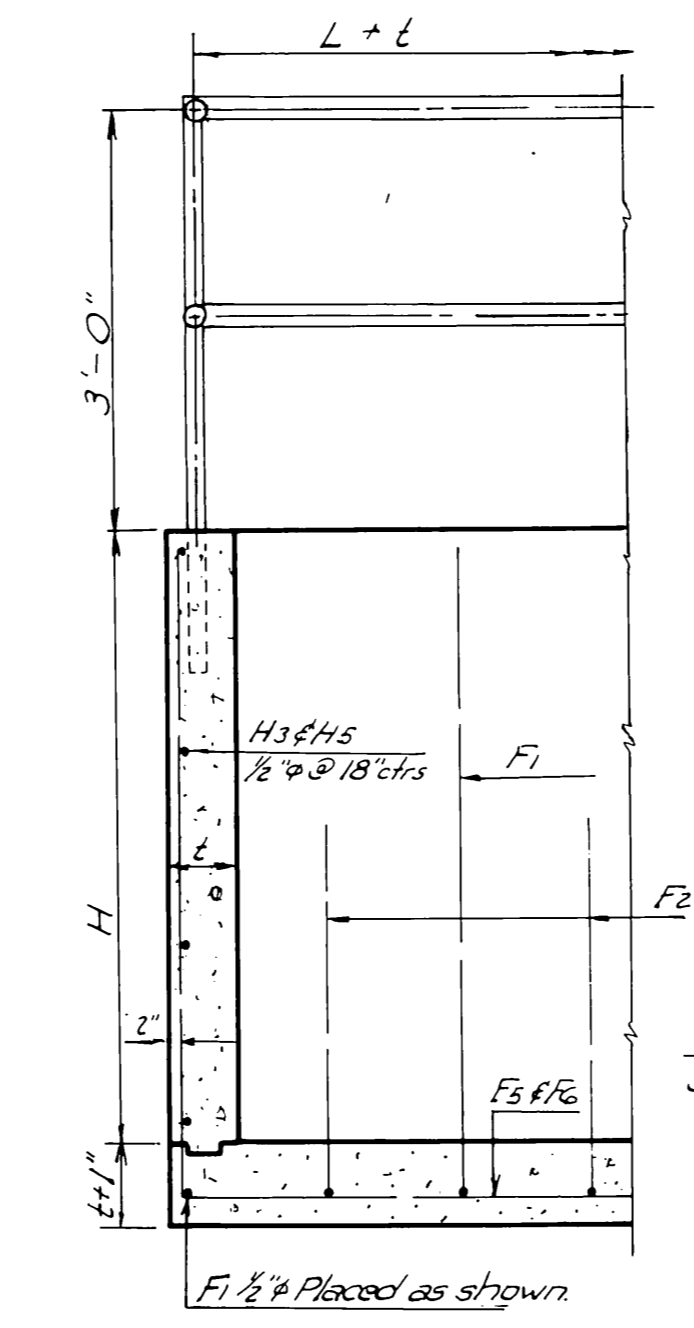
Note: An intermediate post shall be placed midway between end posts when span exceeds 8'-0".



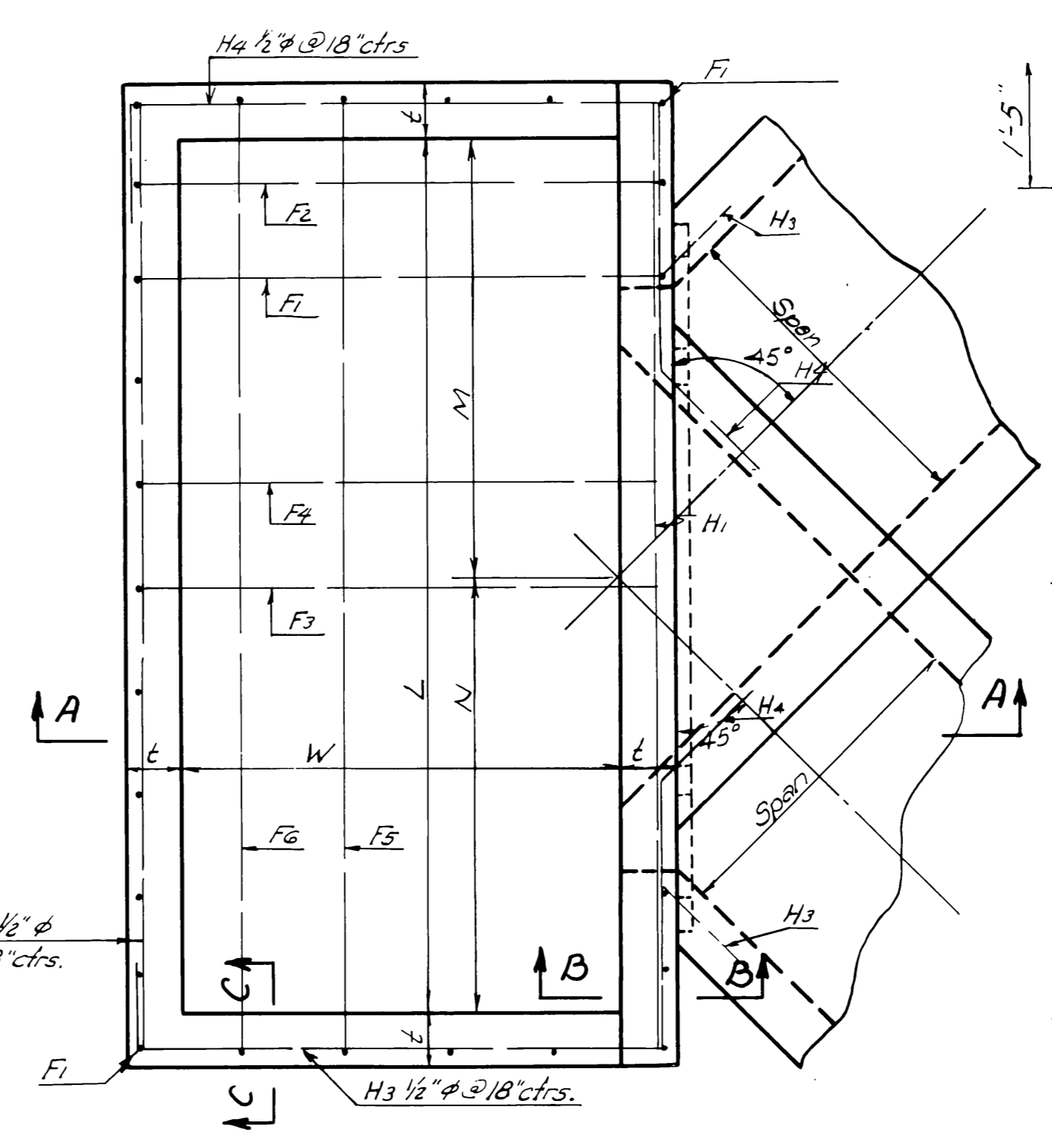
SECTION A-A



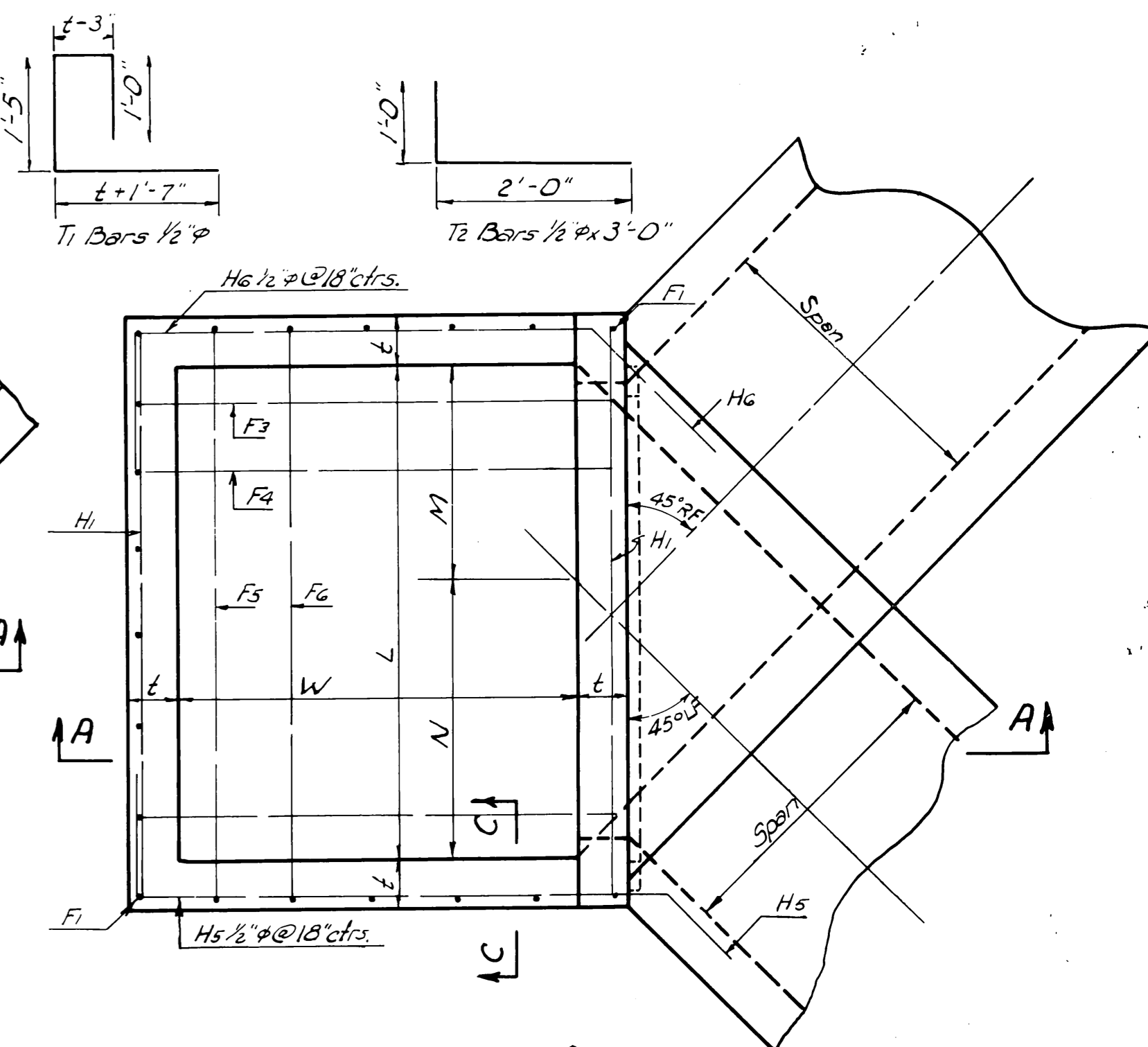
SECTION B-B



SECTION C-C



PLAN - TYPE 'B'



PLAN - TYPE 'A'

**GENERAL NOTES**

- ALL CONSTRUCTION AND MATERIAL REQUIREMENTS SHALL BE IN ACCORDANCE WITH THE STANDARD SPECIFICATIONS.
- ALL EXPOSED CONCRETE EDGES SHALL HAVE A 3/4 INCH CHAMFER.
- PIPE HANDRAIL SHALL BE PLACED ON DROP INLETS ONLY WHEN A QUANTITY FOR THAT ITEM IS INCLUDED ON THE SUMMARY SHEET.
- STANDARD STEEL PIPE PAINTED WITH TWO COATS OF ALUMINUM PAINT MAY BE USED IN PLACE OF GALVANIZED STEEL PIPE.
- WELDED CONNECTIONS MAY BE USED FOR PIPE HANDRAIL. WELDED CONNECTIONS SHALL BE THOROUGHLY CLEANED OF ALL LOOSE SCALE, GROUND SMOOTH AND SPOT PAINTED WITH TWO COATS OF ALUMINUM PAINT.
- SHOP DETAILS FOR ALL PIPE HANDRAIL SHALL BE SUBMITTED FOR APPROVAL TO THE BRIDGE ENGINEER BEFORE FABRICATION.
- UNLESS OTHERWISE SPECIFIED, ALL EXPOSED CONCRETE SURFACES SHALL HAVE A FINISH IN ACCORDANCE WITH THE STANDARD SPECIFICATIONS.

DESIGN NUMBER	TYPE	SIZE OF CULVERT		DROP-INLET SIZES										REINFORCING STEEL												QUANTITIES																					
		Span	Clear Height	L	M	N	W	H	t	All F Bars Size	F1 Bars	F2 Bars	F3 Bars	F4 Bars	F5 Bars	F6 Bars	H1 Bars 1/2 phi	H2 Bars 3/4 phi	H3 Bars 1/2 phi	H4 Bars 1/2 phi	H5 Bars 1/2 phi	H6 Bars 1/2 phi	T1 Bars	T2 Bars	T3 Bars	T4 Bars	T5 Bars	T6 Bars																			
1	A	2'-0"	2'-0"	1'-0"	3'-6"	1'-5"	2'-1"	2'-0"	3'-3"	6"	12'-0"	12'-0"	3'-5"	2	6'-1"	3'-5"	3	11'-0"	3'-5"	2	4'-2"	5	4'-2"	2	5'-7"	3	5'-6"	3	4'-3"	5	5	1.00	1.39	13.0													
2	A	3'-0"	2'-0"	1'-0"	5'-0"	2'-2"	2'-0"	2'-3"	3'-3"	6"	12'-0"	12'-3"	3'-5"	2	6'-4"	3'-5"	4	12'-6"	3'-5"	2	5'-8"	5	5'-8"	4	5'-10"	3	5'-9"	3	4'-3"	6	6	1.30	1.68	16.5													
3	B	3'-0"	2'-6"	1'-0"	6'-0"	3'-0"	3'-0"	3'-0"	3'-9"	6"	12'-0"	12'-0"	3'-11"	3	6'-8"	3'-11"	4	14'-6"	3'-11"	3	6'-8"	6	6'-8"	4	6'-9"	6	6'-8"	4	6'-9"	6	6	1.85	2.15	20.0													
4	A	3'-0"	2'-6"	2'-0"	5'-0"	2'-2"	2'-0"	2'-6"	3'-9"	6"	12'-0"	11'-6"	3'-11"	2	7'-1"	3'-11"	6	13'-6"	3'-11"	4	5'-8"	6	5'-8"	4	6'-9"	6	6'-8"	4	6'-9"	6	6	1.48	2.06	17.0													
5	B	3'-0"	3'-0"	1'-0"	8'-0"	4'-0"	4'-0"	4'-0"	4'-3"	6"	12'-0"	14'-0"	4'-5"	8	9'-1"	4'-5"	3	17'-6"	4'-5"	5	8'-8"	6	8'-8"	4	8'-9"	6	8'-8"	4	8'-9"	6	6	2.85	3.21	26.0													
6	A	3'-0"	3'-0"	2'-0"	5'-0"	2'-2"	2'-0"	3'-0"	4'-3"	6"	12'-0"	13'-0"	4'-5"	2	8'-1"	4'-5"	3	14'-6"	4'-5"	2	8'-10"	2'-7"	3	6'-7"	4	6'-6"	4	4'-3"	6	6	1.74	2.24	18.0														
7	A	4'-0"	2'-0"	1'-0"	6'-5"	2'-0"	3'-7"	3'-0"	3'-3"	6"	12'-0"	11'-0"	3'-5"	2	7'-1"	3'-5"	6	13'-11"	3'-5"	3	7'-1"	5	7'-1"	4	6'-7"	3	6'-6"	3	4'-3"	8	8	1.75	2.24	20.8													
8	B	4'-0"	2'-6"	1'-0"	8'-0"	4'-0"	4'-0"	4'-0"	3'-9"	6"	12'-0"	13'-0"	3'-11"	3	8'-7"	3'-11"	7	16'-6"	3'-11"	4	8'-8"	6	8'-8"	4	8'-10"	10"	1'-0"	3	8'-9"	1'-7"	1'-0"	3	2.59	2.92	26.0												
9	A	4'-0"	2'-6"	2'-0"	6'-5"	2'-0"	3'-7"	2'-6"	3'-9"	6"	12'-0"	11'-6"	3'-11"	2	7'-1"	3'-11"	4	14'-11"	3'-11"	1	12'-7"	2'-9"	2	7'-1"	6	7'-1"	4	6'-4"	3	6'-0"	3	4'-3"	8	8	1.73	2.36	19.8										
10	B	4'-0"	3'-0"	1'-0"	11'-0"	5'-6"	5'-6"	5'-6"	4'-3"	6"	12'-0"	15'-6"	4'-5"	7	10'-7"	4'-5"	8	20'-6"	4'-5"	7	11'-8"	6	11'-8"	4	11'-9"	3'-11"	1'-0"	3	11'-9"	3'-11"	1'-0"	3	4.22	4.48	35.0												
11	A	4'-0"	3'-0"	2'-0"	6'-5"	2'-0"	3'-7"	3'-0"	4'-3"	6"	12'-0"	13'-0"	4'-5"	2	8'-1"	4'-5"	5	15'-11"	4'-5"	2	11'-3"	2'-1"	3	7'-1"	6	7'-1"	4	6'-7"	4	6'-6"	4	4'-3"	8	8	2.02	2.78	20.8										
12	B	4'-0"	4'-0"	1'-0"	8'-0"	4'-0"	4'-0"	4'-0"	5'-3"	6"	12'-0"	16'-2"	5'-5"	3	10'-8"	2'-11"	2	10'-2"	5'-5"	6	7'-8"	2'-11"	6	19'-8"	5'-5"	3	14'-8"	2'-11"	4	8'-9"	7	8'-9"	4	8'-1"	10"	1'-0"	4	8'-1"	1'-8"	1'-0"	4	4.5	8	8	3.44	5.07	26.2
13	A	4'-0"	4'-0"	2'-0"	5'-7"	2'-0"	3'-9"	4'-0"	5'-3"	6"	12'-0"	16'-2"	5'-5"	2	10'-3"	5'-5"	5	7'-8"	2'-11"	6	18'-3"	5'-5"	3	13'-3"	2'-11"	4	7'-4"	7	7'-4"	4	7'-11"	4	7'-6"	4	4'-5"	8	8	2.96	4.29	23.3							
14	A	5'-0"	2'-0"	1'-0"	7'-0"	3'-7"	4'-3"	3'-9"	3'-3"	6"	12'-0"	11'-9"	3'-5"	2	7'-0"	3'-5"	7	15'-4"	3'-5"	3	8'-6"	5	8'-6"	4	8'-6"	5	8'-6"	4	7'-4"	3	7'-3"	3	4'-3"	9	9	2.23	2.60	25.2									
15	B	5'-0"	3'-0"	1'-0"	13'-0"	6'-6"	6'-6"	6'-6"	4'-3"	6"	12'-0"	18'-6"	4'-5"	5	11'-4"	4'-5"	9	9'-3"	2'-11"	5	22'-6"	4'-5"	4	17'-0"	2'-11"	6	13'-8"	6	13'-8"	4	12'-4"	2'-7"	1'-0"	3	13'-1"	3'-4"	1'-0"	3	4'-3"	9	9	5.22	5.31	41.0			
16	A	5'-0"	3'-0"	2'-0"	7'-0"	3'-7"	4'-3"	3'-0"	4'-3"	6"	12'-0"	13'-0"	4'-5"	2	8'-1"	4'-5"	8	6'-0"	2'-4"	9	17'-4"	4'-5"	1	13'-8"	2'-4"	2	8'-6"	6	8'-6"	4	6'-7"	4	6'-6"	4	4'-3"	9	9	2.30	3.15	23.7							
17	A	5'-0"	4'-0"	2'-0"	8'-1"	3'-7"	4'-6"	4'-0"	5'-3"	6"	12'-0"	16'-2"	5'-5"	2	10'-3"	5'-5"	9	7'-9"	3'-0"	6	19'-9"	5'-5"	4	14'-11"	3'-0"	5	8'-10"	6	8'-10"	4	6'-7"	4	6'-6"	4	4'-3"	10	10	3.36	4.50	26.3							
18	B	5'-0"	5'-0"	2'-0"	10'-0"	5'-0"	5'-0"	5'-0"	6'-3"	6"	12'-0"	19'-8"	6'-7"	3	12'-8"	3'-4"	3	12'-7"	6'-7"	7	9'-4"	3'-4"	6	24'-2"	6'-7"	4	17'-8"	3'-4"	5	11'-0"	7	11'-0"	4	9'-8"	1'-1"	1'-0"	4	10'-10"	2'-2"	1'-0"	4	4'-6"	10	10	6.26	8.87	32.7
19	A	5'-0"	5'-0"	2'-0"	8'-4"	3'-7"	4'-9"	5'-0"	5'-3"	6"	12'-0"	19'-0"	6'-7"	2	12'-8"	6'-7"	7	9'-7"	3'-6"	8	22'-8"	6'-7"	4	16'-6"	3'-6"	5	9'-5"	7	9'-5"	4	7'-0"	3	7'-9"	3	4'-3"	11	11	5.83	8.06	29.5							
20	A	6'-0"	2'-0"	1'-0"	9'-3"	4'-3"	5'-0"	4'-3"	3'-3"	6"	12'-0"	12'-3"	3'-5"	2	8'-4"	3'-5"	9	11'-7"	3'-5"	5	9'-1"	5	9'-1"	4	9'-11"	5	9'-11"	4	7'-11"	4	7'-9"	3	4'-3"	11	11	2.66	3.18	29.0									
21	B	6'-0"	3'-0"	1'-0"	16'-0"	8'-0"	8'-0"	8'-0"	4'-3"	6"	12'-0"	18'-3"	4'-5"	6	13'-8"	4'-5"	6	11'-2"	2'-6"	6	25'-6"	4'-5"	5	21'-8"	2'-6"	6	16'-8"	6	16'-8"	4	14'-7"	3'-5"	1'-0"	3	15'-4"	4'-2"	1'-0"	3	4'-3"	11	11	6.91	6.97	50.0			
22	A	6'-0"	3'-0"	2'-0"	9'-5"	4'-3"	5'-2"	3'-0"	4'-3"	6"	12'-0"	13'-0"	4'-5"	2	8'-1"	4'-5"	9	6'-1"	2'-5"	10	18'-11"	4'-5"	3	14'-11"	2'-5"	4	10'-1"	6	10'-1"	4	6'-7"	4	6'-6"	4	4'-3"	11	11	2.62	4.04	26.8							
23	A	6'-0"	4'-0"	2'-0"	9'-5"	4'-3"	5'-2"	4'-0"	5'-3"	7"	12'-0"	16'-0"	5'-6"	2	10'-10"	5'-6"	8	8'-3"	2'-11"	9	21'-3"	5'-6"	4	16'-1"	2'-11"	5	10'-3"	7	10'-3"	4	8'-6"	4	8'-1"	4	4'-5"	11	11	4.26	6.14	30.2							
24	B	6'-0"	5'-0"	2'-0"	12'-0"	6'-0"	6'-0"	6'-0"	6'-3"	8"	12'-0"	20'-8"	6'-7"	5	14'-0"	3'-6"	5	13'-7"	6'-7"	10	10'-6"	3'-6"	9	26'-2"	6'-7"	7	20'-0"	3'-6"	8	13'-0"	7	13'-0"	4	10'-11"	1'-5"	1'-0"	4	12'-0"	2'-6"	1'-0"	4	4'-6"	12	12	7.72	10.73	38.7
25	A	6'-0"	5'-0"	3'-0"	9'-8"	4'-3"	5'-5"	5'-0"	6'-3"	8"	12'-0"	19'-0"	6'-7"	4	12'-8"	6'-7"	8	9'-9"	3'-8"	9	24'-0"	6'-7"	4	18'-2"	3'-8"	5	10'-9"	7	10'-9"	4	9'-6"	5	8'-8"	5	4'-7"	12	12	6.35	8.87	32.2							
26	B	6'-0"	6'-0"	2'-0"	16'-0"	8'-0"	8'-0"	8'-0"	7'-3"	9"	12'-0"	11'-2"	7'-8"	9	17'-8"	4'-3"	9	16'-10"	7'-8"	10	32'-6"	7'-8"	9	25'-8"	4'-3"	10	17'-2"	8	17'-2"	4	15'-4"	3'-5"	1'-0"	5	16'-4"	4'-8"	1'-0"	5	4'-7"	12	12	14.17	16.70	51.0			
27	A	6'-0"	6'-0"	3'-0"	9'-8"	4'-3"	5'-5"	6'-0"	7'-3"	10"	12'-0"	23'-4"	7'-9"	10	15'-1"	7'-9"	10	11'-6"	4'-2"	11	26'-6"	7'-9"	7	19'-4"	4'-2"	8	11'-0"	8	11'-0"	4	10'-9"	6	9'-10"	6	4'-8"	12	12	9.23	12.95	34.7							

\*Minimum head 3" water above drop inlet to give box design discharge.

BASIS OF PAYMENT		
ITEM NO.	ITEM	UNIT
611.06(E)	INLET	EA.
611.06(F)	ADDITIONAL DEPTH IN INLET	V.F.
622.06(A)	PIPE RAILING	L.F.

APPROVED BY

RURAL DES. ENGR. URBAN DES. ENGR. BRIDGE ENGINEER CONSULT. ENGINEER ASS'T. DIR./DES.

DATE 12-16-88 DATE 12-8-88 DATE 12-5-88 DATE 12-7-88 DATE 12-11-88

DESIGN JBC

DRAWN TEW LCF 2/52

CHECKED LGC 9/88

SQUAD ENG. SUPRT. BRANCH

RURAL/URBAN DESIGN

1988 SPECIFICATIONS

OKLAHOMA DEPT. OF TRANSPORTATION STANDARD

DROP INLET FOR BOX CULVERT

45° SKEWED L.F. & R.F.

2' X 2' TO 6' X 6'

OBSELETE

CBD1-IS3 LF & RF-12

2/2/89