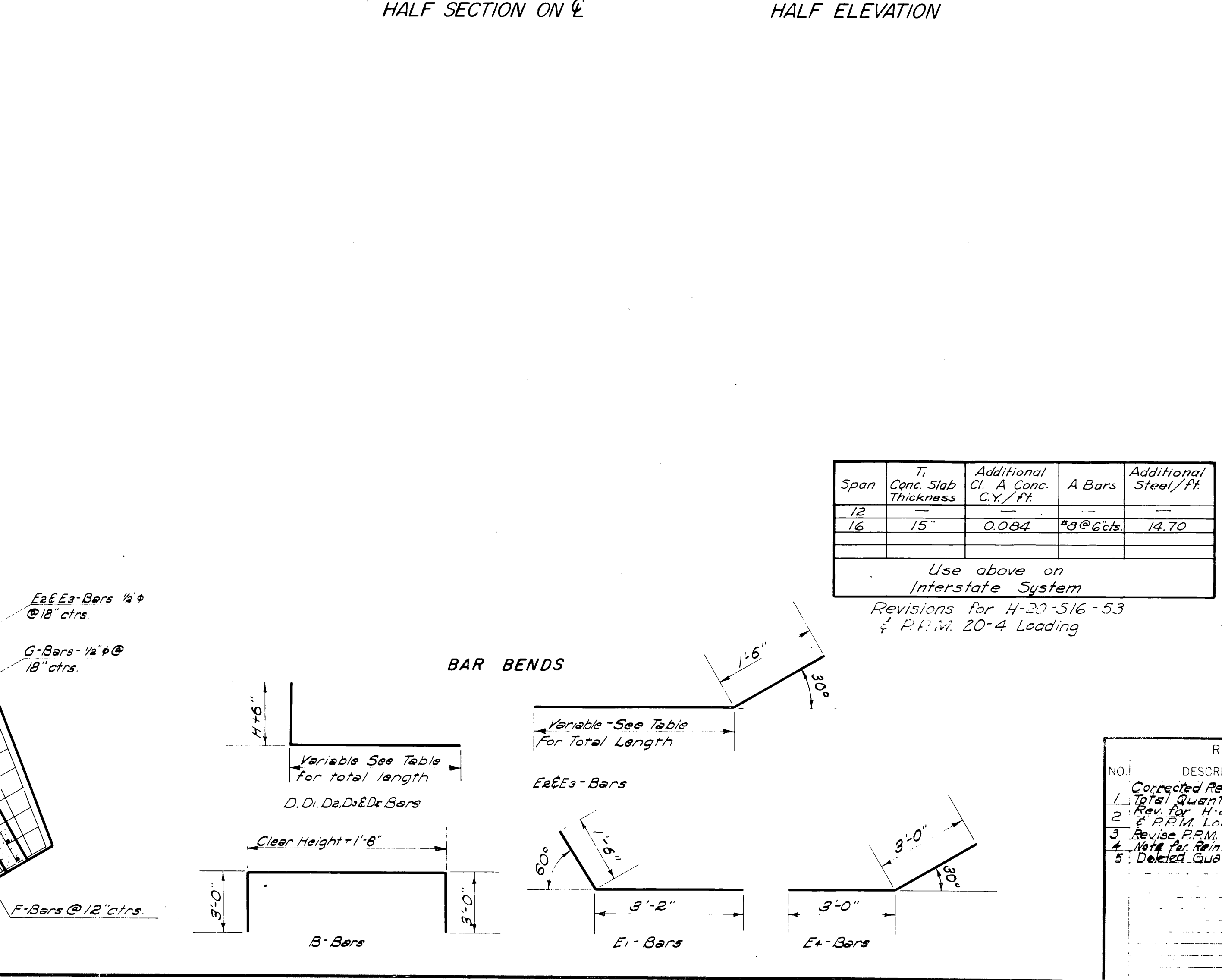
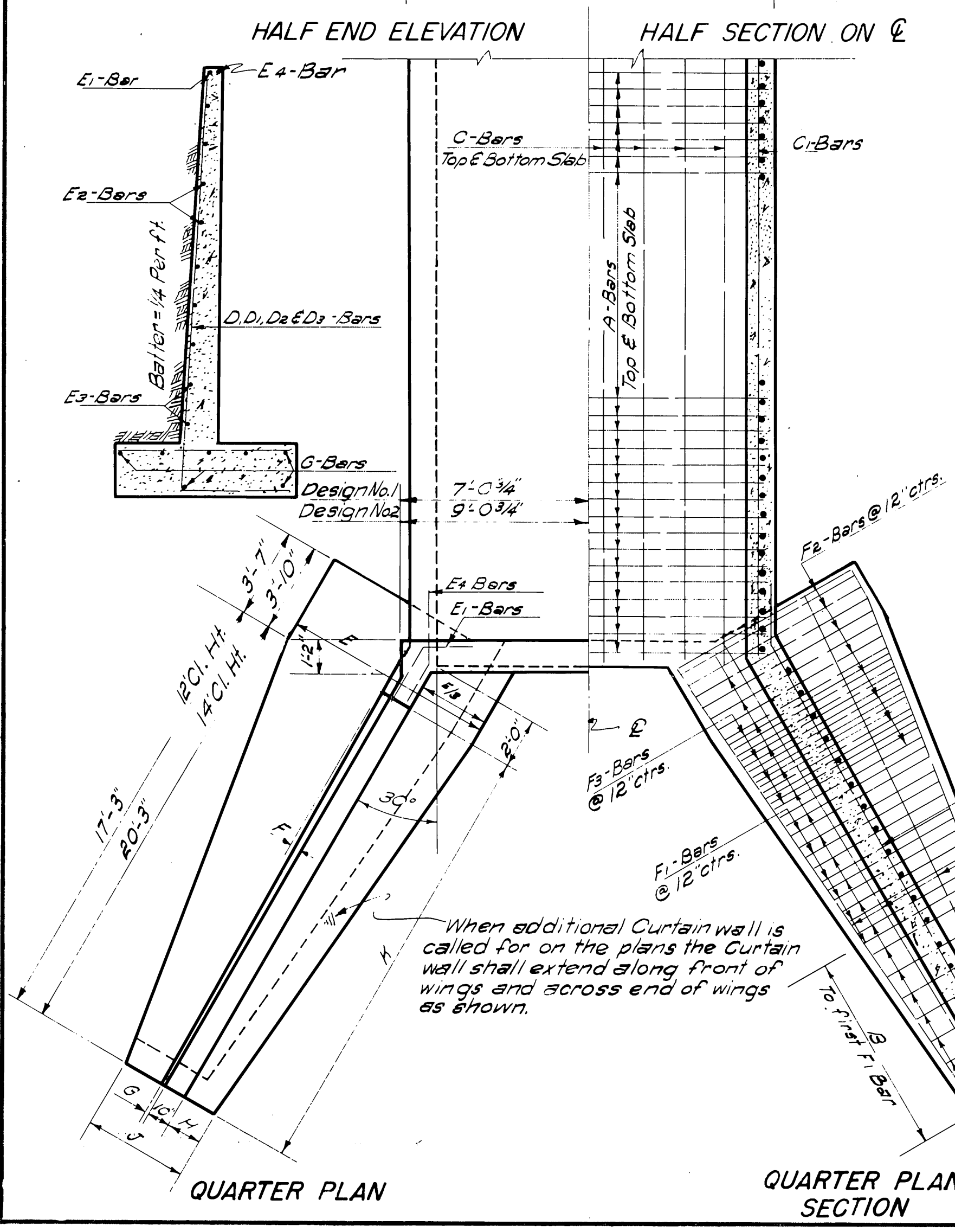
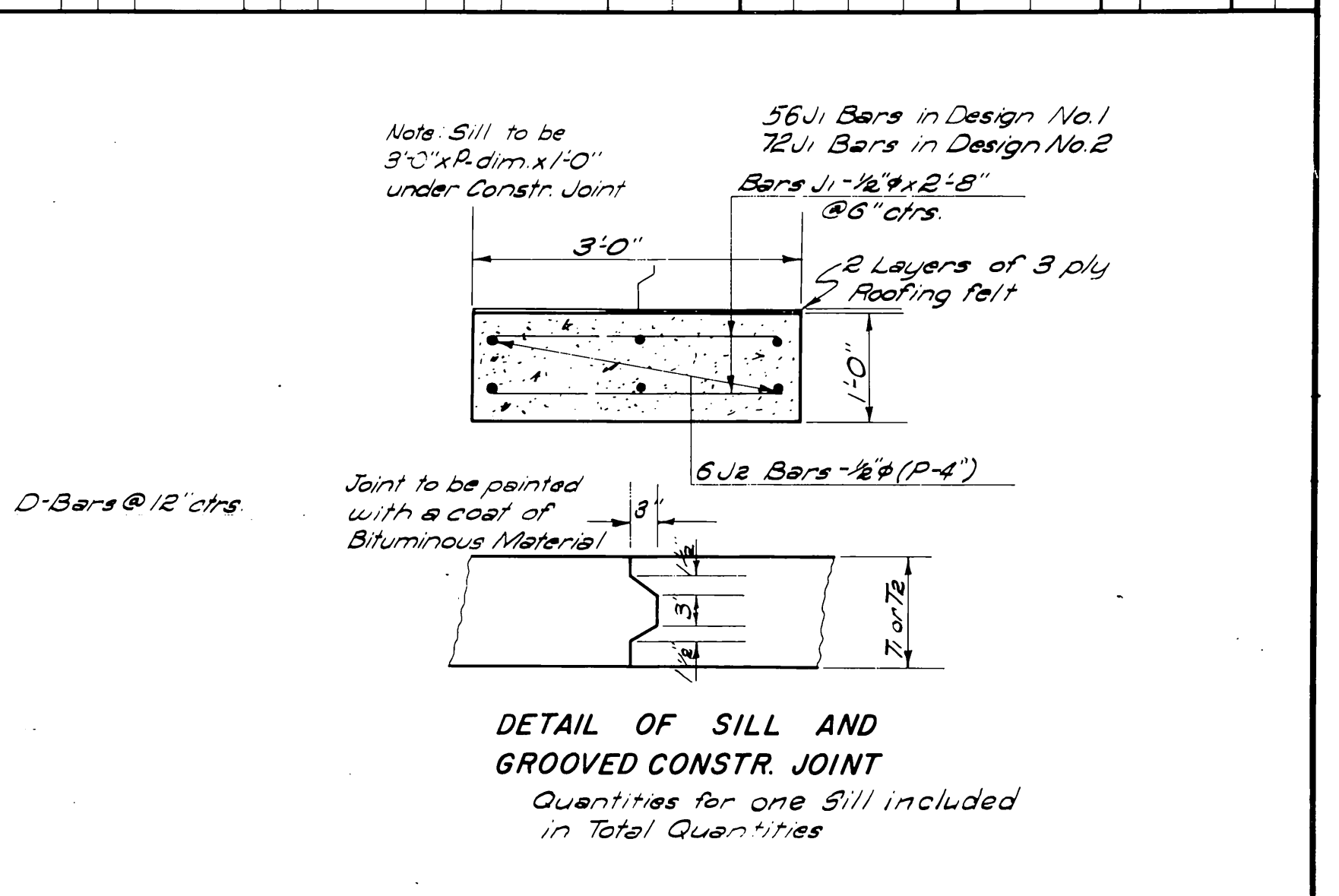
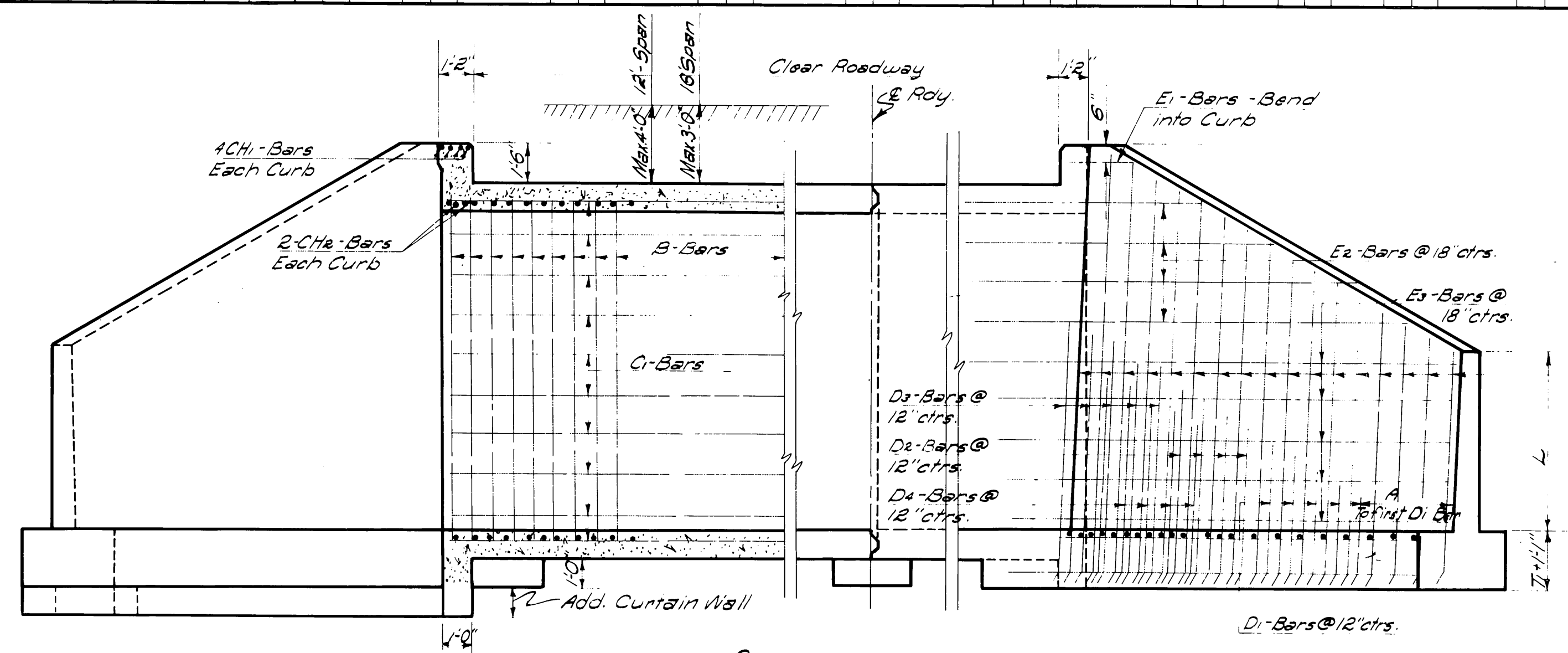
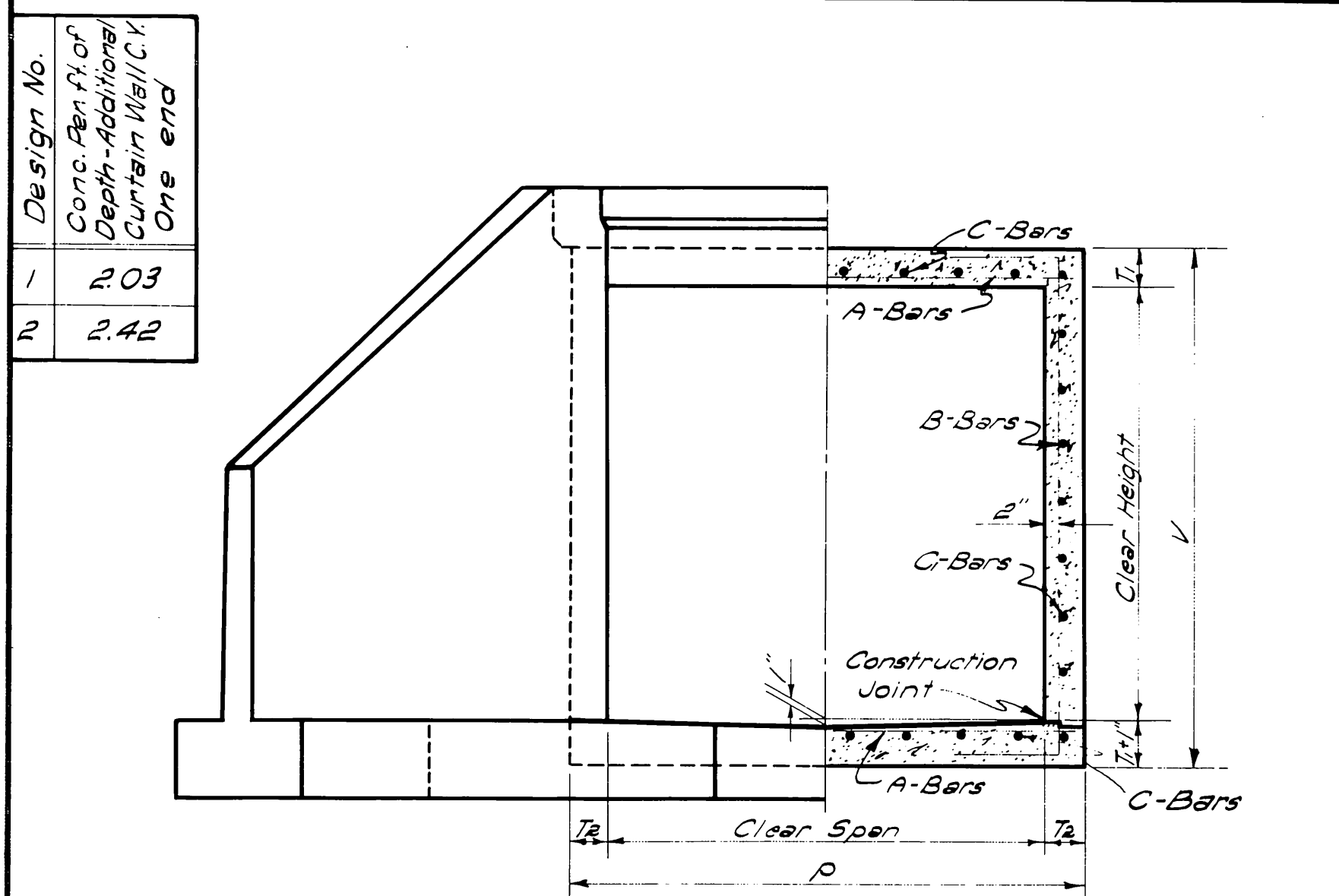


DESIGN NO.	Clear Span	Clear Height	BARREL OF CULVERT												FOUR WINGS												2 CURBS		Sill Quant.																																																										
			Dimensions			Reinforcing Steel						Dimensions						Reinforcing Steel						Quantities																																																															
			T	V	P	Bars-A	Bars-B	C-Bars	D-Bars	E-Bars	F-Bars	G-Bars	H-Bars	J-Bars	K-Bars	L-Bars	M-Bars	A-Bars	B-Bars	F1-Bars	F2-Bars	F3-Bars	D-Bars	D1-Bars	D2-Bars	D3-Bars	D4-Bars	Steel Lbs.		Concrete Cu. Yds.																																																									
1	12'-0"	12'-0"	12'-6"	14'-0"	14'-0"	14'-0"	13'-6"	34'@8"	19'-6"	44	18	247.74	1.994	8'-3"	3'-6"	1'-4"	1'-4"	4'-0"	17'-3"	7'-0"	4'-6"	3'-9"	7'-9"	32	1/2"	20'-4"	88	3/8"	3'-6"	7'-9"	24	3/8"	5'-5"	7'-0"	32	3/8"	6'-11"	7'-9"	20	3/8"	7'-0"	7'-9"	16	3/8"	7'-9"	16'-0"	20	3/8"	20'-1"	56	3/8"	6'-0"	76	3/8"	10'-7"	18'-1"	24	3/8"	1'-9"	6'-11"	18	3/8"	7'-4"	8'-8"	24	3/8"	9'-1"	11'-4"	24	3/8"	6'-9"	8'-11"	48	3/8"	7'-9"	10'-0"	70,25	71.92	13'-9"	13'-8"	250	1.73	32,500	2,951	1	157	1.56
2	16'-0"	14'-0"	12'-6"	12'-6"	18'-0"	17'-6"	17'-8"	3/4" @ 6"	21'-6"	58	22	351.22	2.651	9'-6"	4'-6"	2"	1'-6"	4'-6"	20'-3"	7'-11"	6'-8"	2'-9"	6'-9"	36	1/2"	23'-4"	100	3/8"	4'-0"	10'-9"	24	3/8"	5'-0"	10'-6"	48	3/8"	7'-1"	9'-0"	32	3/8"	7'-3"	10'-9"	20	3/8"	7'-9"	10'-7"	24	3/8"	8'-2"	20'-6"	28	3/8"	5'-3"	7'-0"	20	3/8"	8'-3"	10'-0"	32	3/8"	10'-5"	10'-8"	32	3/8"	1'-7"	10'-4"	70,25	99.61	14'-5"	17'-8"	323	2.22	46,190	3,962	2	203	2.0										



Span	Ti Conc. Slab Thickness	Additional Cl. A Conc. C.Y./Ft.	A Bars	Additional Steel/Ft.
12	15"	0.084	*8@6cfs	14.70
16	15"	0.084	*8@6cfs	14.70

Use above on Interstate System
Revisions for H-20-S16-53
4 P.R.M. 20-4 Loading

GENERAL NOTES

All construction and materials requirements shall be in accordance with the current standard specifications.

Unless otherwise specified, all exposed concrete surfaces shall have a finish in accordance with the current standard specifications.

All exposed edges shall have a 3/4" chamfer.

Grooved Construction Joints and Pedestals shall be used when and where as noted on Summary Sheet or as directed by the Resident Engineer. Const. Joints shall be perpendicular to C of barrel.

All slab reinforcing steel shall be supported on approved metal supports.

REVISIONS				RECORD	
NO.	DESCRIPTION	BY	DATE	ITEM	BY DATE
1	Corrected Reinf. Steel				
2	Total Quant. 108' Rd.				
3	Rev. for H-20-S16-53				
4	Rev. P.M. Loading				
5	Rev. for Const. Wts.				
6	Deleted Guard Rail				

OKLAHOMA DEPARTMENT OF TRANSPORTATION	
OKLAHOMA CITY, OKLAHOMA	
STANDARD	
SINGLE SPAN BOX CULVERT	
PROJECT NO.	SHEET NO.
	BC-17 5