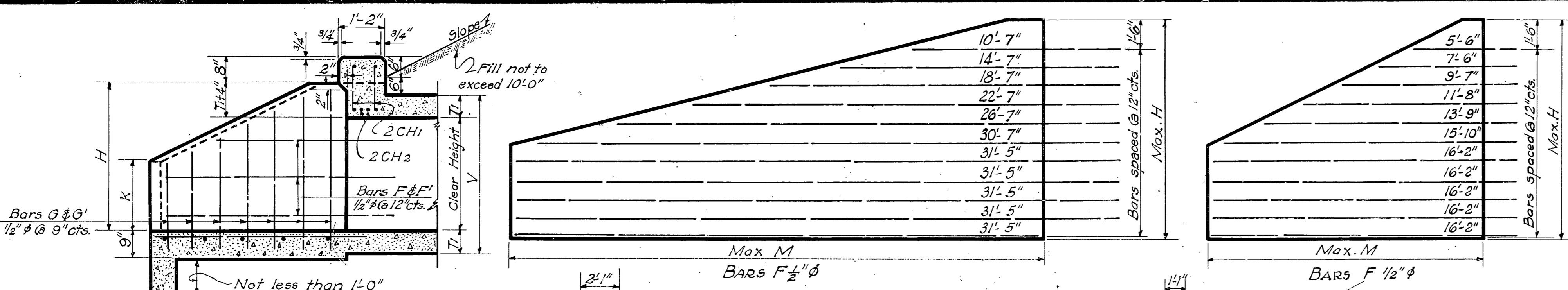
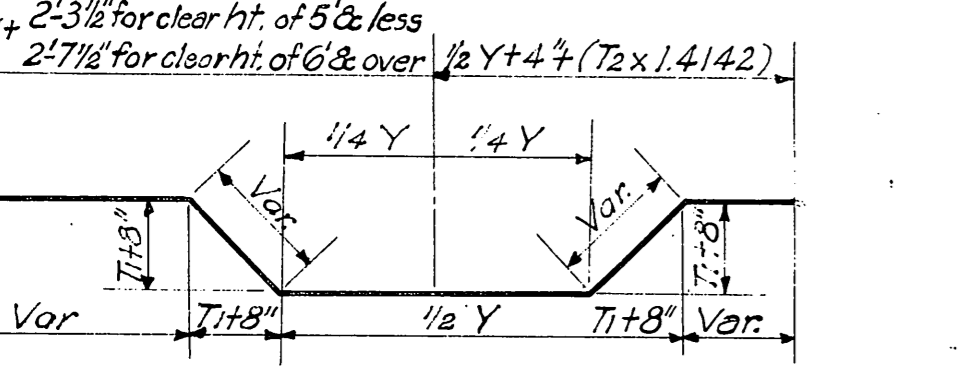


Rev. Design Data 12/2/55
Rev. 6/25/58
Rev. Note for Reinf. Wts. 5-T-63
Variable
See diagram for total length.
BENDING FOR BARS G & G'
Rev. Rem. 2:1 Slopes 5-T-85

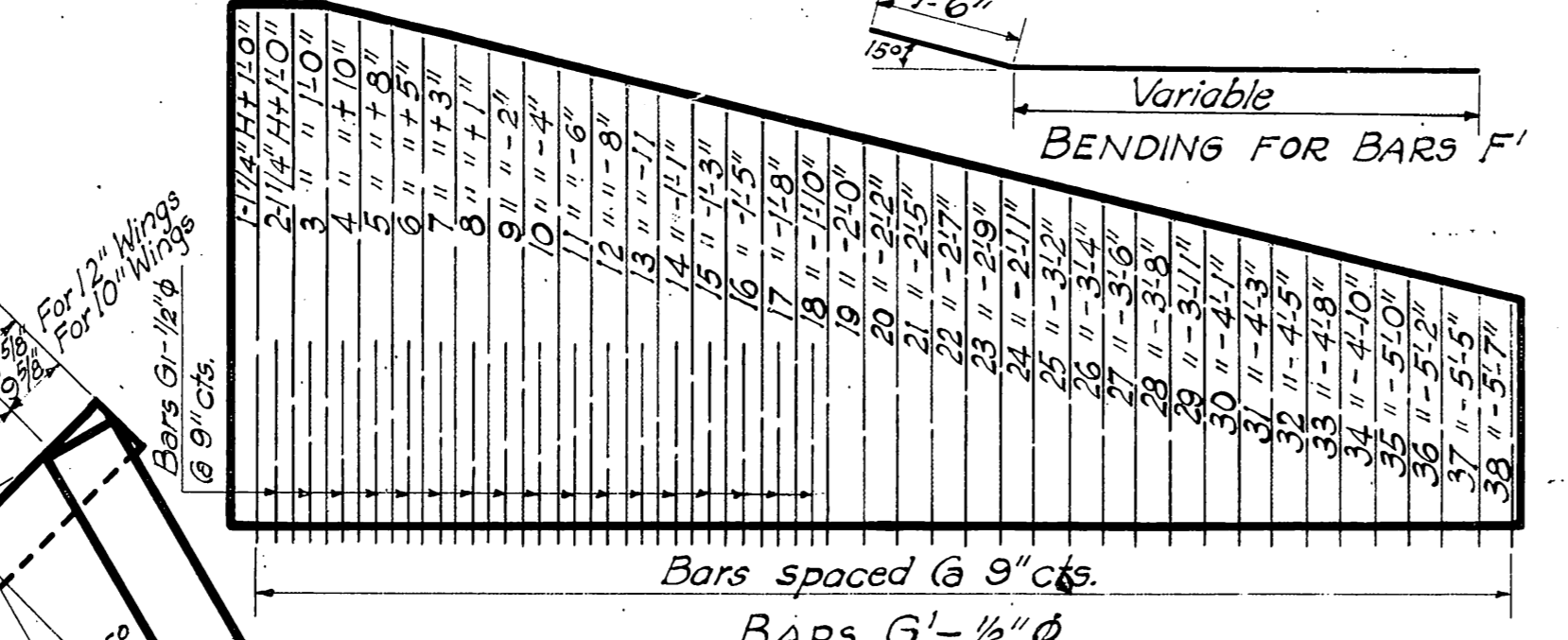
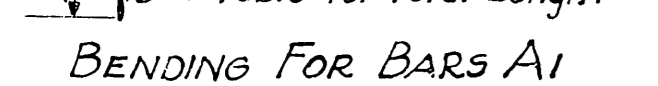


SECTION THRU APRON



BENDING FOR BARS CHI

BENDING FOR BARS AI

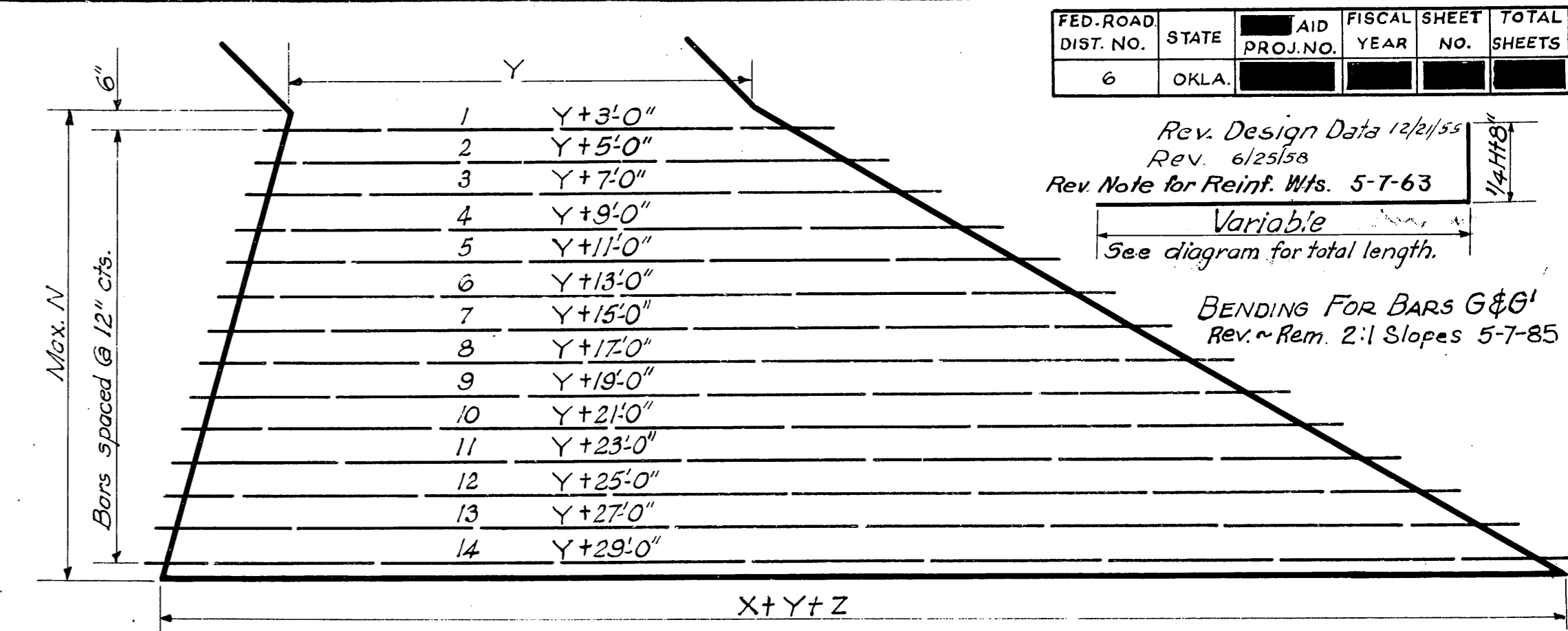


BENDING FOR BARS F'



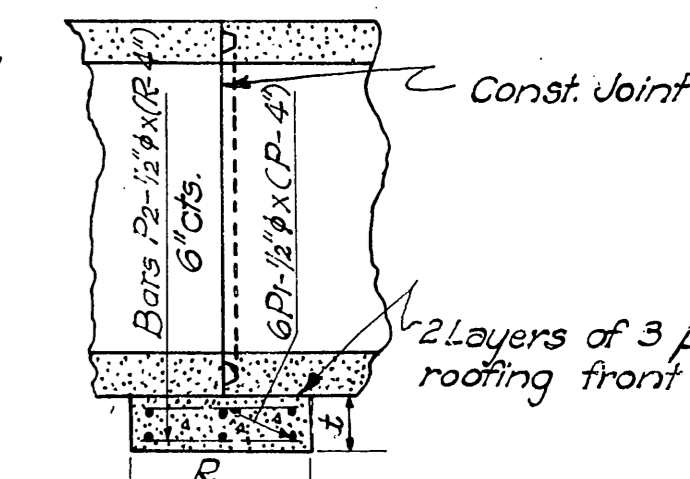
BENDING FOR BARS F

NOTE: Quantities for 50' Roadway include quantities for one pedestal Grooved Const. Joints and pedestals shall be used when and where noted on summary sheet. In general Grooved Construction Joints and pedestals shall be placed as follows: 60' to 100' of barrel use 1 construction joint and pedestal, 100' to 140' of barrel, use 2 Construction Joints and pedestals. 100' to 180' barrel, use 3 Construction Joints and pedestals. The Grooved Construction Joints & pedestals shall be constructed perpendicular to & of box.



CROSS SECTION OF BARREL

Size of Barrel	R	t
2x2 to 4x4	2'-0"	9"
5x2 to 6x6	2'-6"	9"
8x3 to 10x10	3'-3"	1'-0"

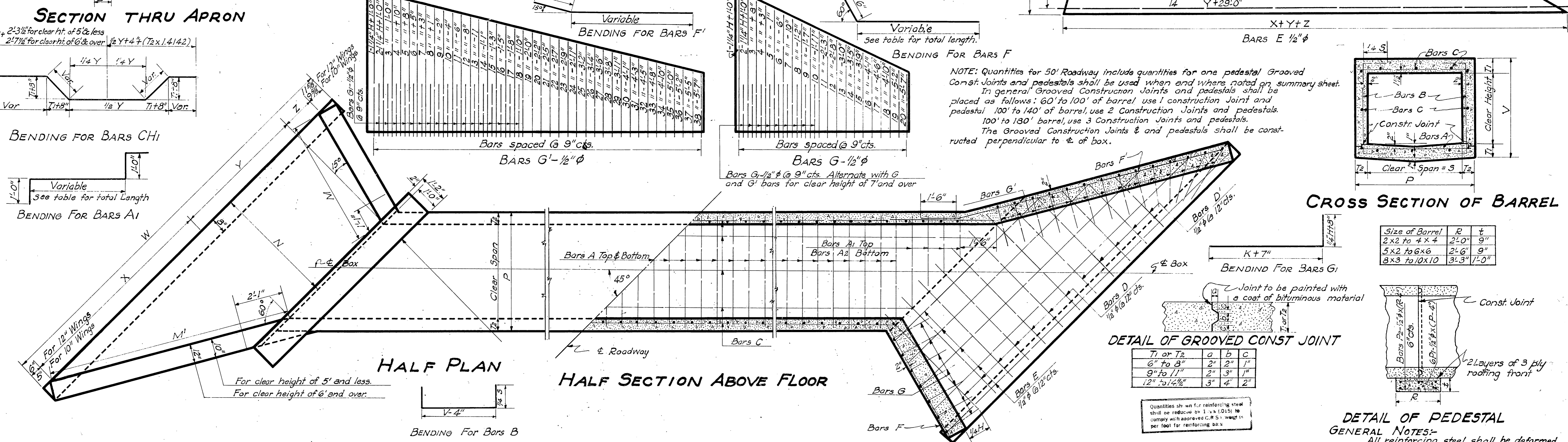


DETAIL OF GROOVED CONST. JOINT

T1 or T2	a	b	c
6" to 8"	2"	2"	1"
9" to 11"	2"	3"	1"
12" to 14"	3"	4"	2"

DETAIL OF PEDESTAL

GENERAL NOTES:
All reinforcing steel shall be deformed round bars. The design and table are based upon net areas of bars as follows: 1/2" φ = 0.1963 sq. in., 3/8" φ = 0.3068 sq. in., 1/4" φ = 0.442 sq. in. Other sizes may be used provided they are spaced so as to give as much net sectional area per foot width of slab. Plans showing such changed sizes and spacing must be approved.
When necessary, reinforcing bars shall be lapped 40 diameters. Total quantities for 50' Roadway include lap of 1/4" φ bars.
All exposed concrete surfaces shall have a carborundum finish and this shall be included in the unit price bid per Cu. Yd. for Concrete.
All exposed concrete edges shall have a 3/4" chamfer.
DESIGN DATA Okla. Std. Spec. Design is sufficient for H20-516-53 and PPM 20-4 loading



HALF PLAN

HALF SECTION ABOVE FLOOR

TWO CURBS

DESIGN NO.	WATERWAY	BARREL OF CULVERT														TWO WINGS AND ONE APRON														TOTAL QUANTS IN ONE PEDESTAL					DESIGN NO.	
		DIMENSIONS				REINFORCING STEEL					QUANTITIES					DIMENSIONS				QUANTITIES																
Clear Span	Clear Height	T1	T2	V	P	Bars A, A1 & A2		Bars B	Bars C	Steel Per Lin. Ft.	Conc. Per Cu. Yd.	H	K	M	M'	N	W	X	Y	Z	Bars D	Bars D'	Bars E	Bars F	Bars F'	Bars G	Bars G'	Bars G1	Steel	Conc.	Steel	Conc.	Steel	Conc.		
						Size and Spacing	A1																												A2	Length
1	2	2.0	4.0	6"	3'-0"	3'-0"	2'-8"	3'-7"	4'-1"	1'-7"	2'-1"	1'-8"	3'-8"	8	19.34	0.185	2'-10"	1'-5"	4'-0"	7'-9"	3'-10"	11'-9"	6'-8"	2'-10"	1'-0"	4'-4"	4	2'-1	3'-9"	4	109	1.82	1.694	18.49	25	1.67

Designed by M.W. Herley & W. Jones
 Supervised by H.X. White & D.I. McCullough
 Drawn by C.H. Dunn April 1941.
 Traced by G.R.C. July 1941
 Checked by Marsh Aug. 1941