

OKLAHOMA HIGH-SPEED RAIL INITIATIVE

Oklahoma City to Tulsa High-Speed Rail Corridor Cost Study



Prepared for:

**The Oklahoma Department of Transportation
Rail Programs Division**

200 N.E. 21st
Oklahoma City, OK 73105

Prepared by:

Carter :: Burgess

C&B Project No. 020874.010

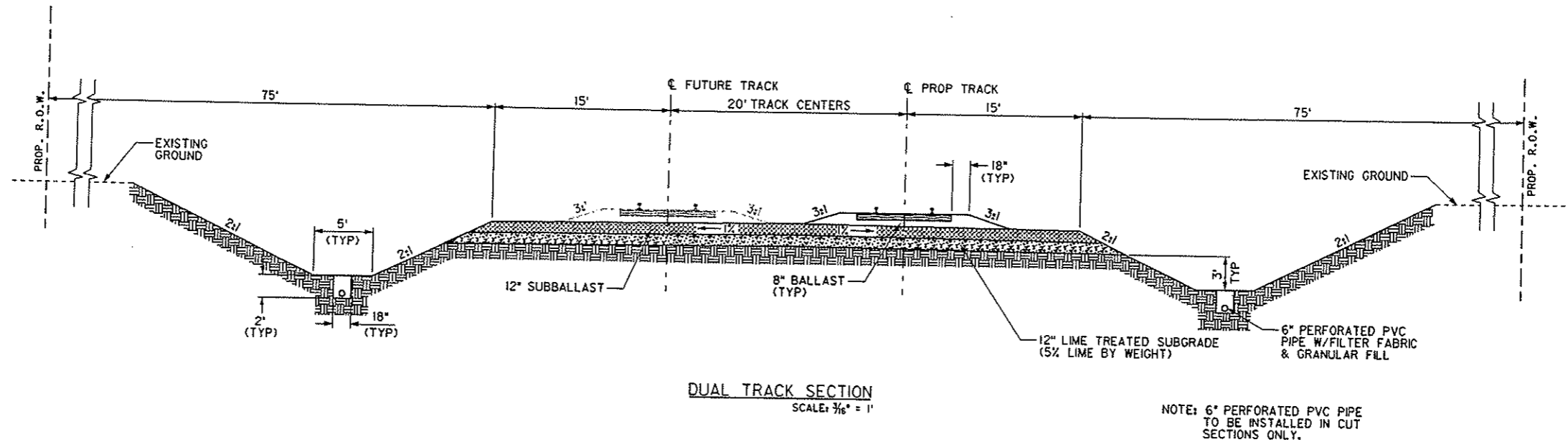
February 2002

SHEET INDEX

SHEET	DESCRIPTION		
1	COVER SHEET		
2	INDEX SHEET		
3	TYPICAL SECTION		
4	PLAN AND PROFILE - ALIGNMENT 1	1 of 6	
5	PLAN AND PROFILE - ALIGNMENT 1	2 of 6	
6	PLAN AND PROFILE - ALIGNMENT 1	3 of 6	
7	PLAN AND PROFILE - ALIGNMENT 1	4 of 6	
8	PLAN AND PROFILE - ALIGNMENT 1	5 of 6	
9	PLAN AND PROFILE - ALIGNMENT 1	6 of 6	
10	PLAN AND PROFILE - ALIGNMENT 2	1 of 3	
11	PLAN AND PROFILE - ALIGNMENT 2	2 of 3	
12	PLAN AND PROFILE - ALIGNMENT 2	3 of 3	
13	PLAN AND PROFILE - ALIGNMENT 3	1 of 11	
14	PLAN AND PROFILE - ALIGNMENT 3	2 of 11	
15	PLAN AND PROFILE - ALIGNMENT 3	3 of 11	
16	PLAN AND PROFILE - ALIGNMENT 3	4 of 11	
17	PLAN AND PROFILE - ALIGNMENT 3	5 of 11	
18	PLAN AND PROFILE - ALIGNMENT 3	6 of 11	
19	PLAN AND PROFILE - ALIGNMENT 3	7 of 11	
20	PLAN AND PROFILE - ALIGNMENT 3	8 of 11	
21	PLAN AND PROFILE - ALIGNMENT 3	9 of 11	
22	PLAN AND PROFILE - ALIGNMENT 3	10 of 11	
23	PLAN AND PROFILE - ALIGNMENT 3	11 of 11	
24	PLAN AND PROFILE - ALIGNMENT 4	1 of 2	
25	PLAN AND PROFILE - ALIGNMENT 4	2 of 2	
26	PLAN AND PROFILE - ALIGNMENT 5	1 of 1	
27	PLAN AND PROFILE - ALIGNMENT 6	1 of 16	
28	PLAN AND PROFILE - ALIGNMENT 6	2 of 16	
29	PLAN AND PROFILE - ALIGNMENT 6	3 of 16	
30	PLAN AND PROFILE - ALIGNMENT 6	4 of 16	
31	PLAN AND PROFILE - ALIGNMENT 6	5 of 16	
32	PLAN AND PROFILE - ALIGNMENT 6	6 of 16	
33	PLAN AND PROFILE - ALIGNMENT 6	7 of 16	
34	PLAN AND PROFILE - ALIGNMENT 6	8 of 16	
35	PLAN AND PROFILE - ALIGNMENT 6	9 of 16	
36	PLAN AND PROFILE - ALIGNMENT 6	10 of 16	
37	PLAN AND PROFILE - ALIGNMENT 6	11 of 16	
38	PLAN AND PROFILE - ALIGNMENT 6	12 of 16	
39	PLAN AND PROFILE - ALIGNMENT 6	13 of 16	
40	PLAN AND PROFILE - ALIGNMENT 6	14 of 16	
41	PLAN AND PROFILE - ALIGNMENT 6	15 of 16	
42	PLAN AND PROFILE - ALIGNMENT 6	16 of 16	
43	PLAN AND PROFILE - ALIGNMENT 7	1 of 5	
44	PLAN AND PROFILE - ALIGNMENT 7	2 of 5	
45	PLAN AND PROFILE - ALIGNMENT 7	3 of 5	
46	PLAN AND PROFILE - ALIGNMENT 7	4 of 5	
47	PLAN AND PROFILE - ALIGNMENT 7	5 of 5	
48	FEMA MAP - OKLAHOMA COUNTY		
49	FEMA MAP - LINCOLN COUNTY		
50	FEMA MAP - CREEK COUNTY		
51	TURNPIKE CORRIDOR R-O-W - OKLAHOMA COUNTY		
52	TURNPIKE CORRIDOR R-O-W - LINCOLN COUNTY		
53	TURNPIKE CORRIDOR R-O-W - CREEK COUNTY - SEGMENT 3	1 of 2	
54	TURNPIKE CORRIDOR R-O-W - CREEK COUNTY - SEGMENT 3	2 of 2	
55	TURNPIKE CORRIDOR R-O-W - CREEK COUNTY - SEGMENT 4		
56	TURNPIKE CORRIDOR R-O-W - CREEK COUNTY - SEGMENT 5		
57	SOUTHERN CORRIDOR R-O-W - OKLAHOMA COUNTY		
58	SOUTHERN CORRIDOR R-O-W - LINCOLN COUNTY		
59	SOUTHERN CORRIDOR R-O-W - CREEK COUNTY	1 of 2	
		2 of 2	

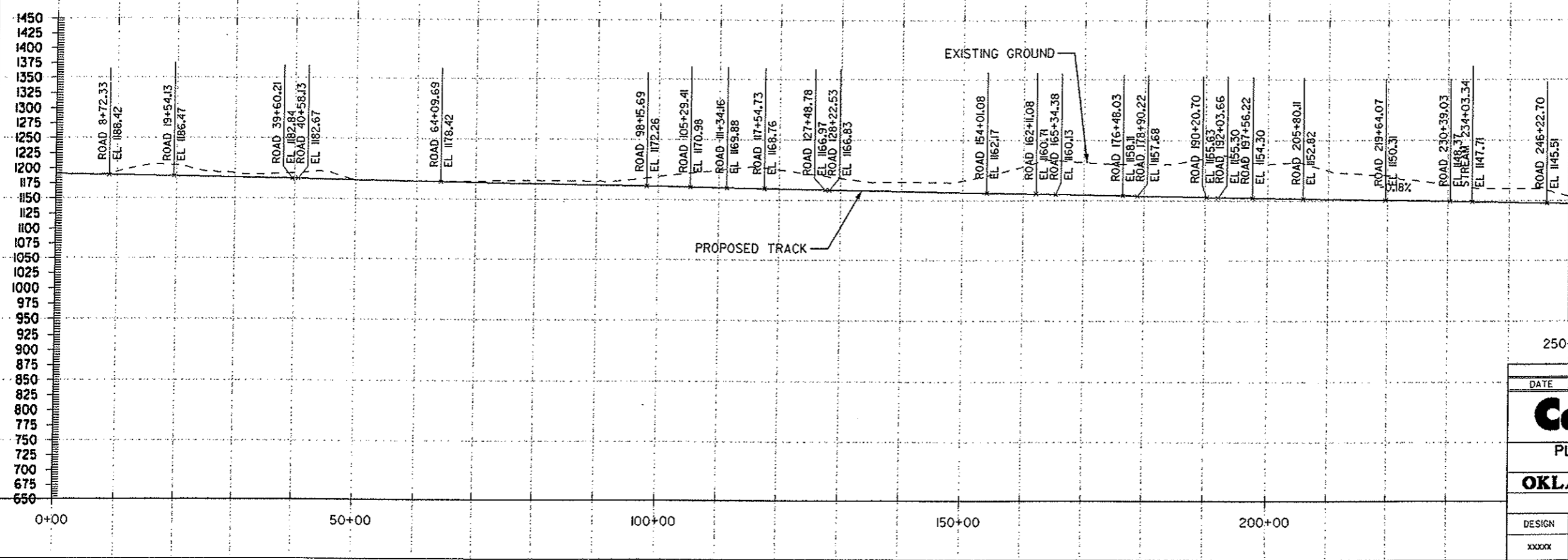
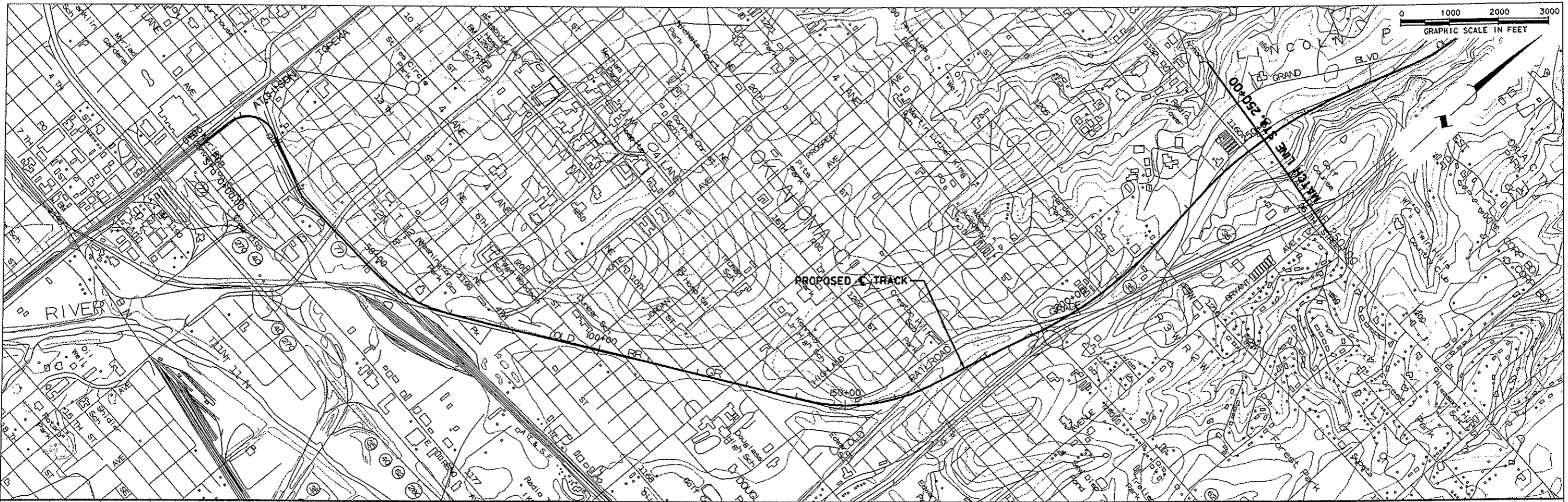
DATE	REVISION	MADE	CKD	APPD		
Carter :: Burgess						
SHEET INDEX						
OKLAHOMA HIGH SPEED RAIL						
OKLAHOMA CITY - TULSA						
DESIGN	DRAWN	CHECKED	SCALE	DATE	FILE	NO.
XXXXX	XXXXXX	XXXXX	NONE	FEB, '02	01-9999	

USER: JG8-DJDKH0000 PLOTTED THU FEB 14 07:45:45 2002
 TEL: 407-781-1234
 PREP: JG8-DJDKH0000 - ROT=0.0000000 - SCALE=12.0000000
 C:\Users\jg8\Documents\Projects\OHSR\Drawings\Tulsa\Tulsa_Cross_Section.dwg - 01/14/02



DATE	REVISION	MADE	CKD	APPD		
Carter :: Burgess						
TYPICAL SECTION						
OKLAHOMA HIGH SPEED RAIL						
OKLAHOMA CITY - TULSA						
DESIGN	DRAWN	CHECKED	SCALE	DATE	FILE	NO.
XXXX	XXXXX	XXXX	3/8" = 1'	FEB, '02	01-9999	

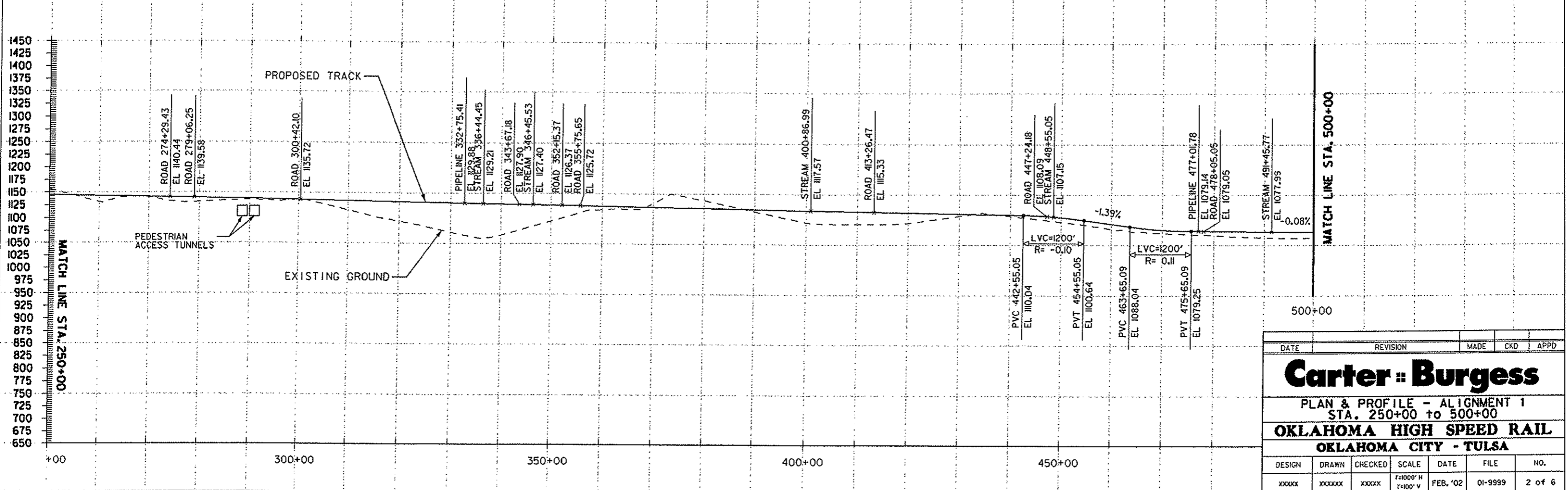
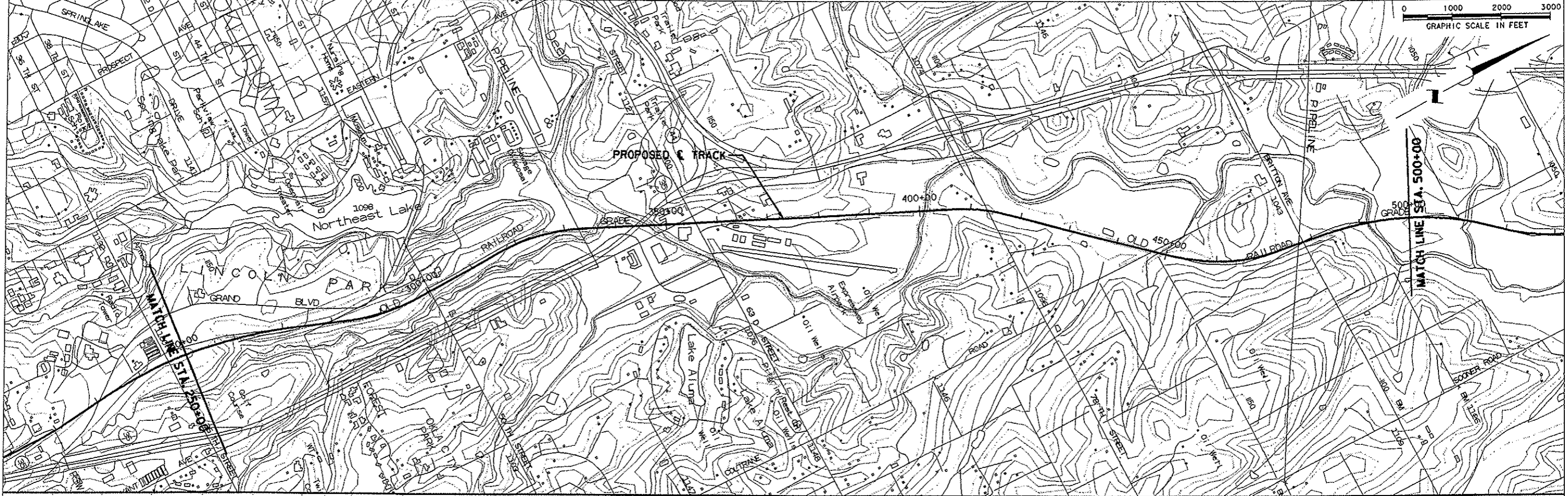
01-21-01: 100% PLAN AND PROFILE FOR THE OKLAHOMA HIGH SPEED RAIL PROJECT - OKLAHOMA CITY TO TULSA - ALIGNMENT 1 - STA. 0+00 TO 250+00 - SHEET 1 OF 6
 DATE: 01/21/02
 DRAWN: J. BURNESS
 CHECKED: J. BURNESS
 SCALE: 1" = 100' H, 1" = 100' V
 DATE: FEB, '02
 FILE: 01-9999
 NO.: 1 of 6



MATCH LINE STA. 250+00

DATE	REVISION	MADE	CKD	APPD		
Carter :: Burgess						
PLAN & PROFILE - ALIGNMENT 1 STA. 0+00 to 250+00						
OKLAHOMA HIGH SPEED RAIL						
OKLAHOMA CITY - TULSA						
DESIGN	DRAWN	CHECKED	SCALE	DATE	FILE	NO.
XXXXX	XXXXXX	XXXXX	H: 1"=100' V: 1"=100'	FEB, '02	01-9999	1 of 6

DATE: 02/27/02
 DRAWN: J. BURGER
 CHECKED: J. BURGER
 SCALE: H=1"=100', V=1"=100'
 DATE: FEB '02
 FILE: 01-9999
 NO: 2 of 6



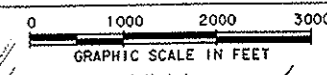
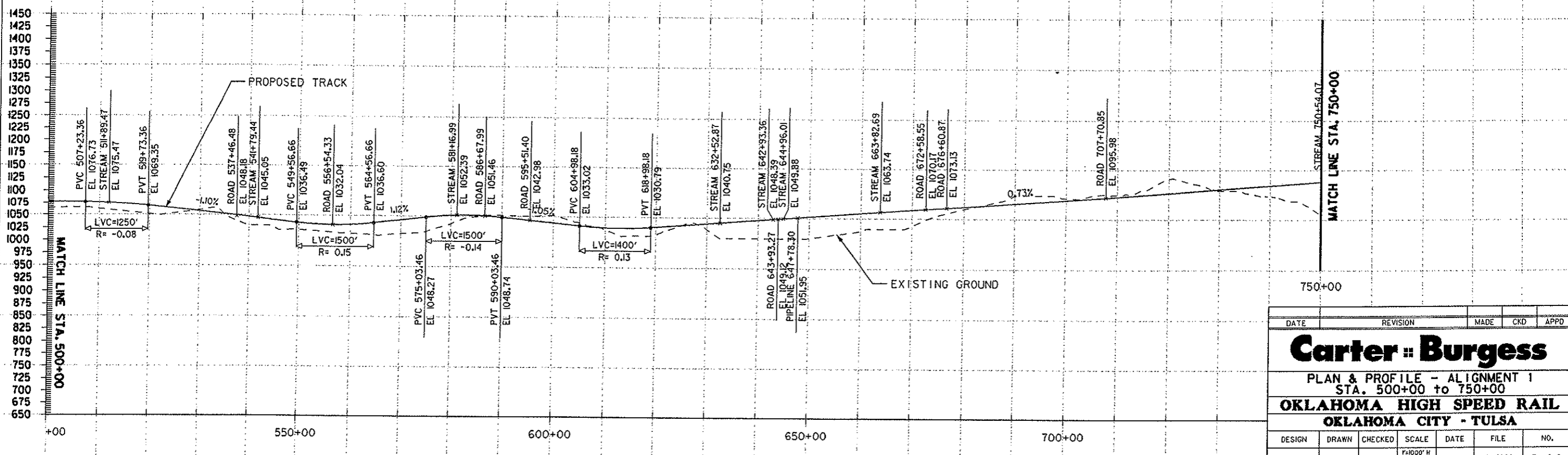
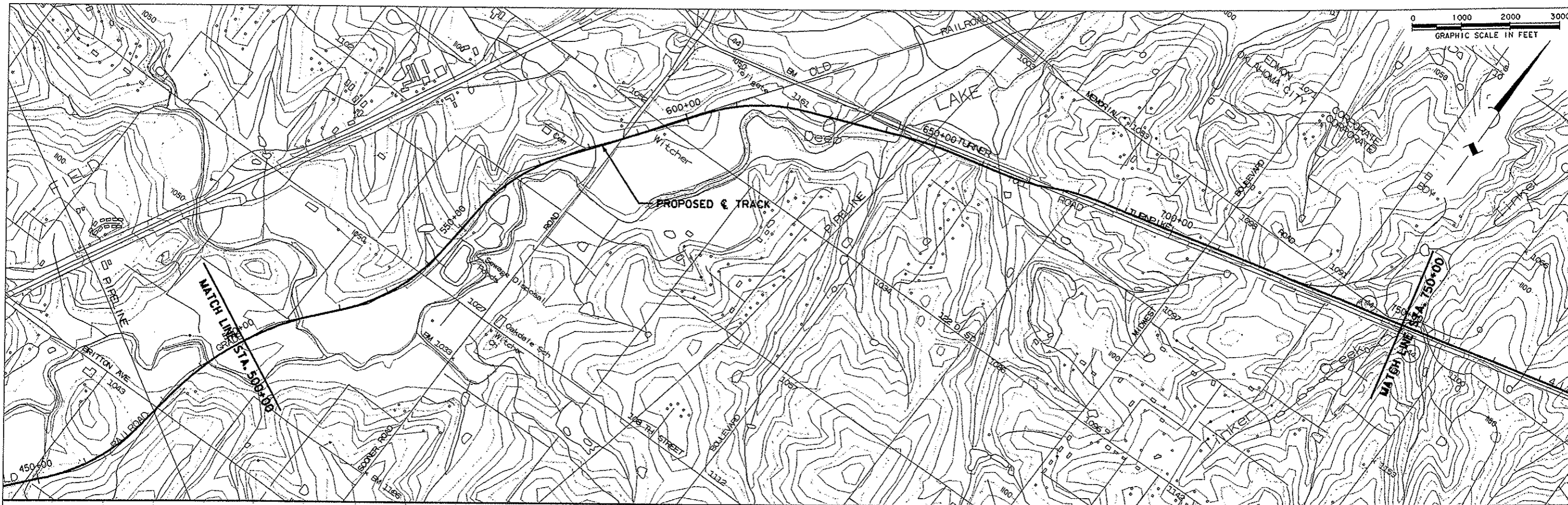
DATE	REVISION	MADE	CKD	APPD

Carter :: Burgess

PLAN & PROFILE - ALIGNMENT 1
 STA. 250+00 TO 500+00
OKLAHOMA HIGH SPEED RAIL
OKLAHOMA CITY - TULSA

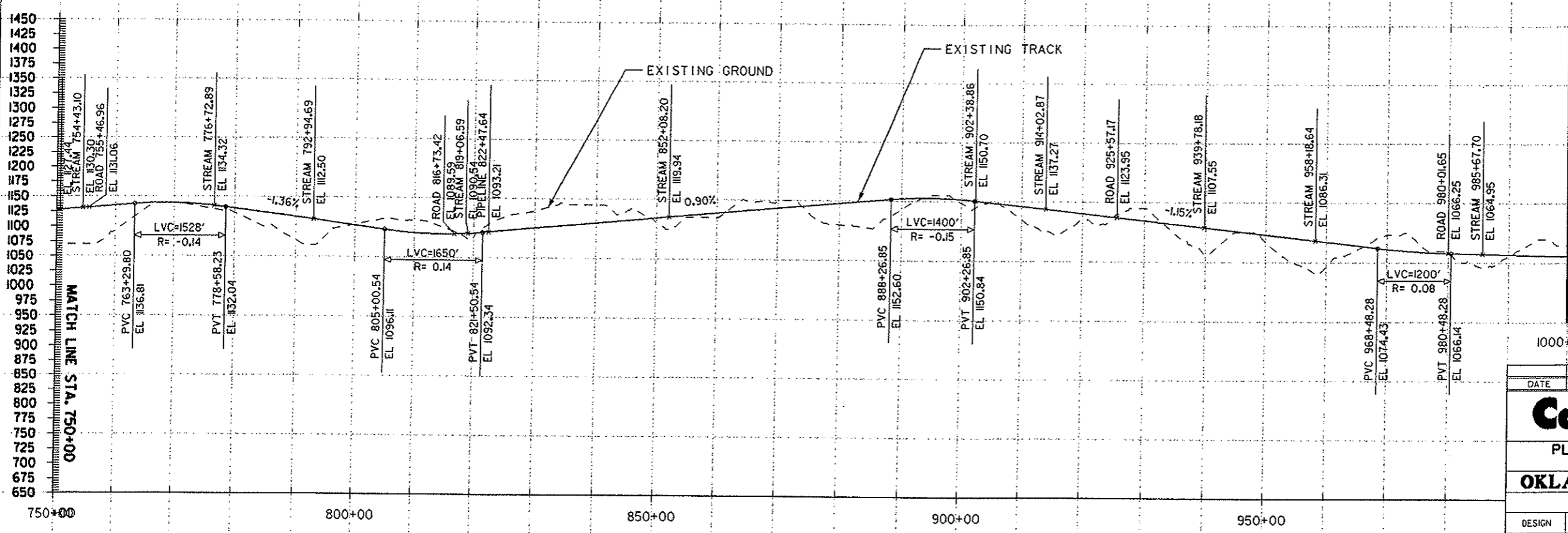
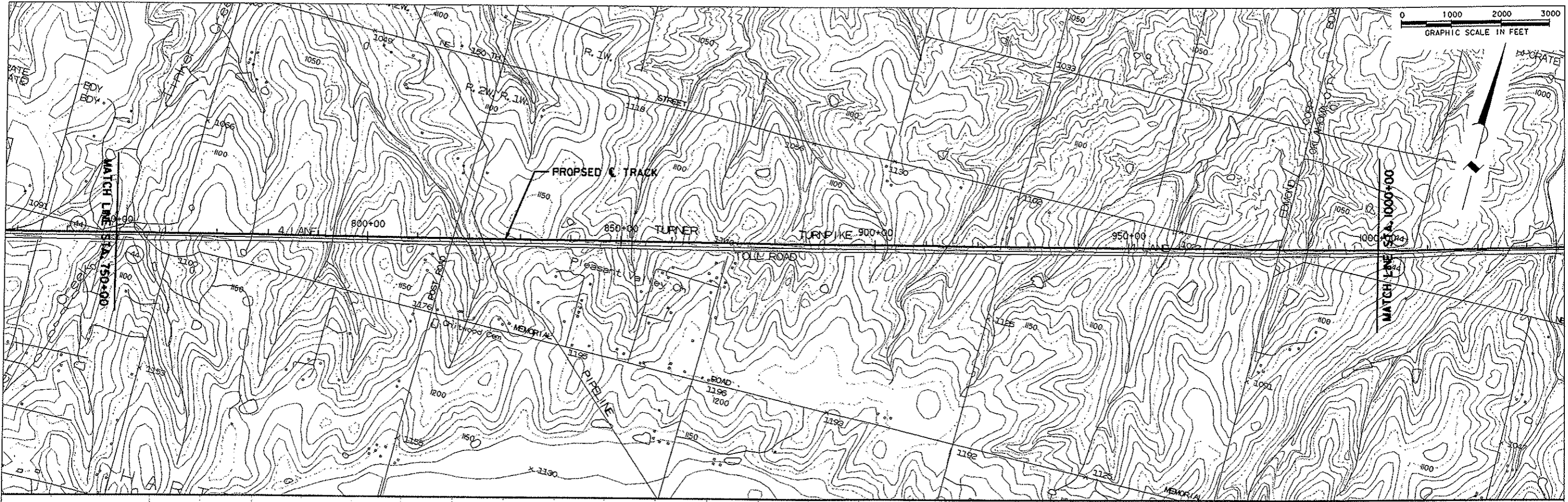
DESIGN	DRAWN	CHECKED	SCALE	DATE	FILE	NO.
XXXXX	XXXXXX	XXXXX	H=1"=100' V=1"=100'	FEB, '02	01-9999	2 of 6

USER:ACADIAE JOB:01081401 OKLAHOMA HIGH SPEED RAIL - PLAN & PROFILE - STA. 500+00 TO 750+00
 PLOT: 10/19/02 10:45:12 AM
 FILE: 01081401 OKLAHOMA HIGH SPEED RAIL - PLAN & PROFILE - STA. 500+00 TO 750+00
 SCALE: 1"=100' H, 1"=100' V
 DATE: FEB. '02
 FILE: 01-9999
 NO: 3 OF 6
 1/28/02 10:45:12 AM
 01081401 OKLAHOMA HIGH SPEED RAIL - PLAN & PROFILE - STA. 500+00 TO 750+00
 SCALE: 1"=100' H, 1"=100' V
 DATE: FEB. '02
 FILE: 01-9999
 NO: 3 OF 6



DATE	REVISION	MADE	CKD	APPD		
<h2>Carter Burgess</h2> <p>PLAN & PROFILE - ALIGNMENT 1 STA. 500+00 TO 750+00 OKLAHOMA HIGH SPEED RAIL OKLAHOMA CITY - TULSA</p>						
DESIGN	DRAWN	CHECKED	SCALE	DATE	FILE	NO.
XXXX	XXXXXX	XXXX	H 1"=100' V 1"=100'	FEB. '02	01-9999	3 OF 6

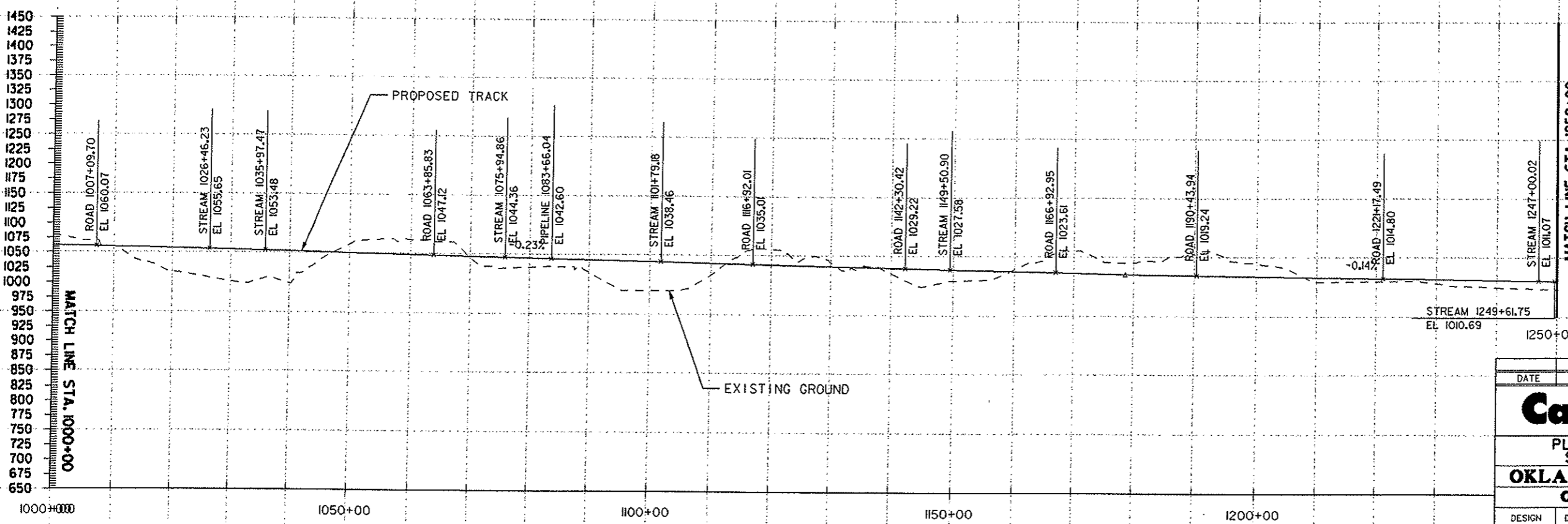
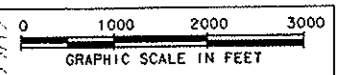
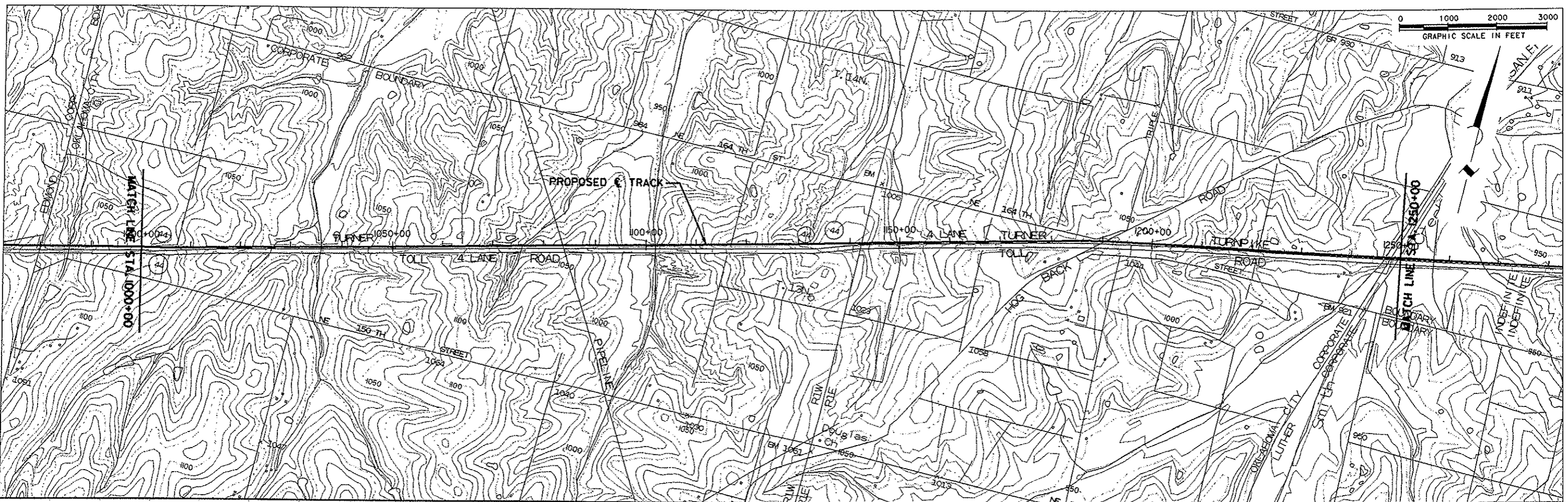
085-A31-10-001-100000-000-000000 - PLAN & PROFILE - ALIGNMENT 1 - STA. 750+00 TO 1000+00 - OKLAHOMA HIGH SPEED RAIL - OKLAHOMA CITY - TULSA
 085-A31-10-001-100000-000-000000 - PLAN & PROFILE - ALIGNMENT 1 - STA. 750+00 TO 1000+00 - OKLAHOMA HIGH SPEED RAIL - OKLAHOMA CITY - TULSA
 085-A31-10-001-100000-000-000000 - PLAN & PROFILE - ALIGNMENT 1 - STA. 750+00 TO 1000+00 - OKLAHOMA HIGH SPEED RAIL - OKLAHOMA CITY - TULSA
 085-A31-10-001-100000-000-000000 - PLAN & PROFILE - ALIGNMENT 1 - STA. 750+00 TO 1000+00 - OKLAHOMA HIGH SPEED RAIL - OKLAHOMA CITY - TULSA
 085-A31-10-001-100000-000-000000 - PLAN & PROFILE - ALIGNMENT 1 - STA. 750+00 TO 1000+00 - OKLAHOMA HIGH SPEED RAIL - OKLAHOMA CITY - TULSA
 085-A31-10-001-100000-000-000000 - PLAN & PROFILE - ALIGNMENT 1 - STA. 750+00 TO 1000+00 - OKLAHOMA HIGH SPEED RAIL - OKLAHOMA CITY - TULSA
 085-A31-10-001-100000-000-000000 - PLAN & PROFILE - ALIGNMENT 1 - STA. 750+00 TO 1000+00 - OKLAHOMA HIGH SPEED RAIL - OKLAHOMA CITY - TULSA
 085-A31-10-001-100000-000-000000 - PLAN & PROFILE - ALIGNMENT 1 - STA. 750+00 TO 1000+00 - OKLAHOMA HIGH SPEED RAIL - OKLAHOMA CITY - TULSA
 085-A31-10-001-100000-000-000000 - PLAN & PROFILE - ALIGNMENT 1 - STA. 750+00 TO 1000+00 - OKLAHOMA HIGH SPEED RAIL - OKLAHOMA CITY - TULSA
 085-A31-10-001-100000-000-000000 - PLAN & PROFILE - ALIGNMENT 1 - STA. 750+00 TO 1000+00 - OKLAHOMA HIGH SPEED RAIL - OKLAHOMA CITY - TULSA



MATCH LINE STA. 1000+00

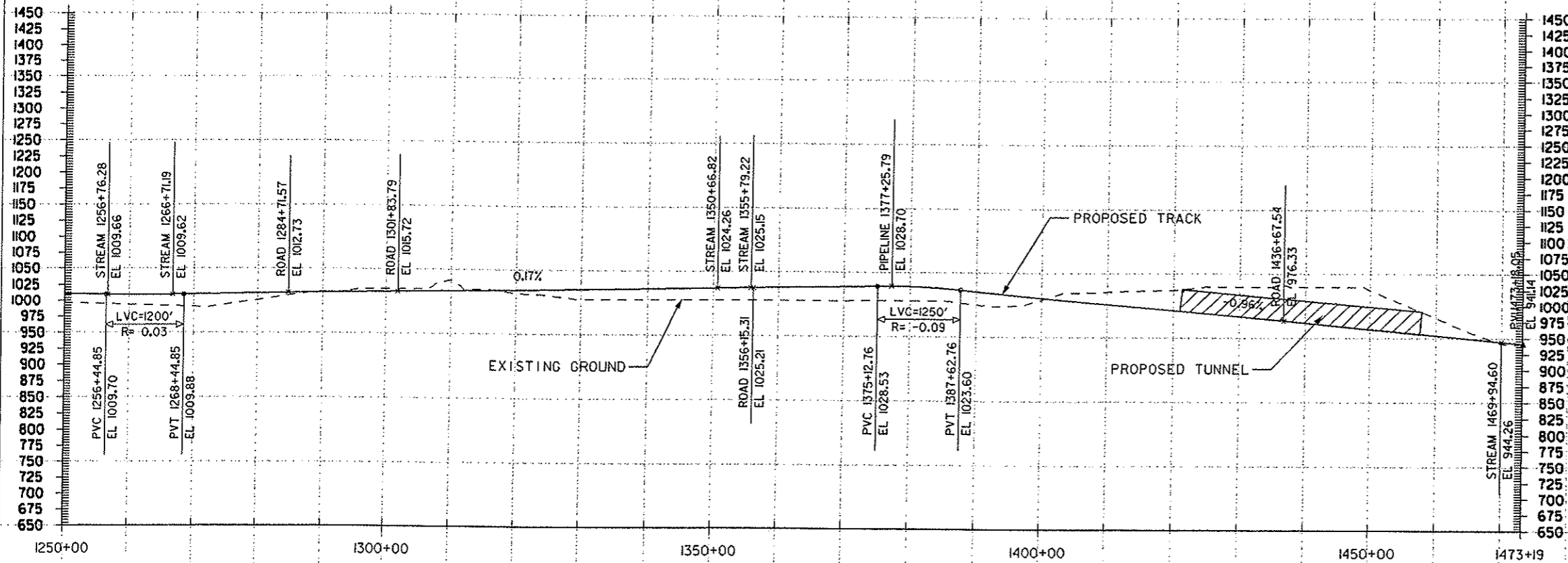
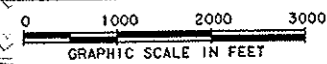
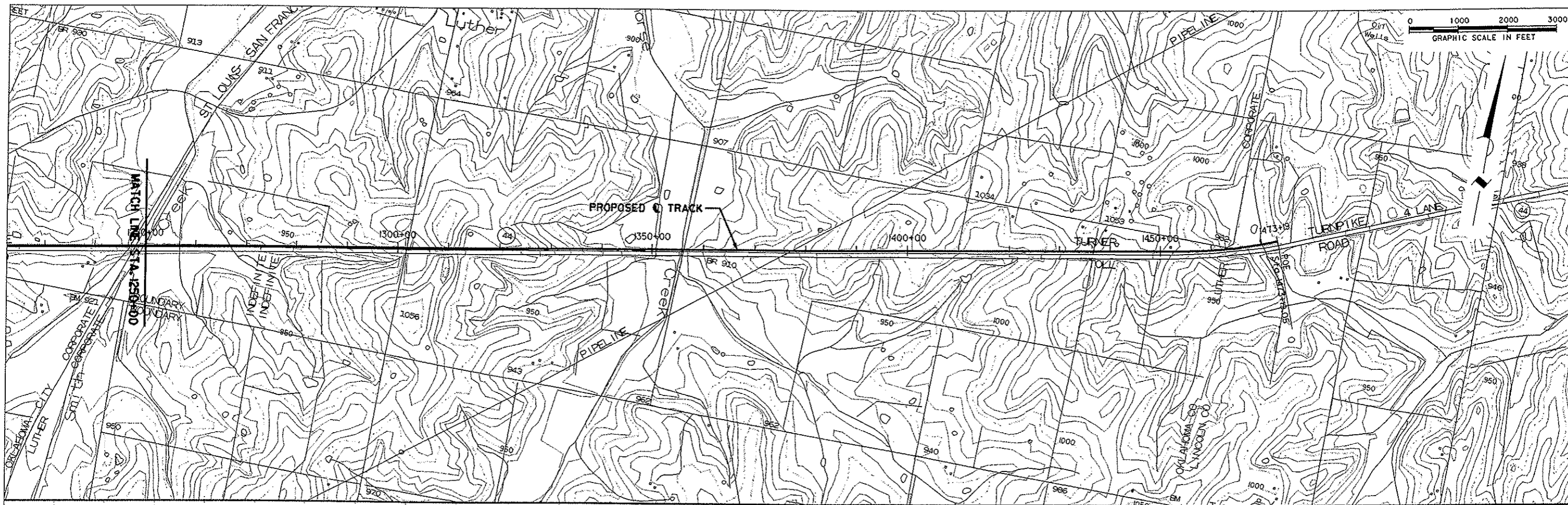
DATE	REVISION	MADE	CKD	APPD		
<h3>Carter :: Burgess</h3> <p>PLAN & PROFILE - ALIGNMENT 1 STA. 750+00 TO 1000+00</p> <h2>OKLAHOMA HIGH SPEED RAIL</h2> <p>OKLAHOMA CITY - TULSA</p>						
DESIGN	DRAWN	CHECKED	SCALE	DATE	FILE	NO.
XXXX	XXXXXX	XXXXX	H=1000' V V=100'	FEB, '02	01-9999	4 OF 6

USER: JLNKRNWJN JOB: JLNKRNWJN PLOTTED: Wed Feb 13 15:52:23 2002
 TEL: 413-751-1234 FAX: 413-751-1234
 C:\Users\jlnk\Documents\Projects\2002\02-13\02-13-02\02-13-02.dwg - L:\Users\jlnk\Documents\Projects\2002\02-13\02-13-02\02-13-02.dwg
 SCALE: 1"=100' PLOT SCALE: 1"=100'



DATE	REVISION	MADE	CKD	APPD		
Carter :: Burgess						
PLAN & PROFILE ALIGNMENT 1 STA. 1000+00 TO 1250+00						
OKLAHOMA HIGH SPEED RAIL						
OKLAHOMA CITY - TULSA						
DESIGN	DRAWN	CHECKED	SCALE	DATE	FILE	NO.
XXXXX	XXXXXX	XXXXX	1"=100' H 1"=100' V	FEB, '02	01-9999	5 of 6

OKLAHOMA HIGH SPEED RAIL PROJECT - ALIGNMENT 1 - STA. 1250+00 TO 1473+18.05
 DATE: 02/08/02
 USER: JLM
 PLOTTED: Wed Feb 13 15:53:34 2002
 TITLE: PLAN & PROFILE - ALIGNMENT 1 - STA. 1250+00 TO 1473+18.05
 SCALE: 1"=100' H / 1"=100' V
 SHEET NO. 6 OF 6



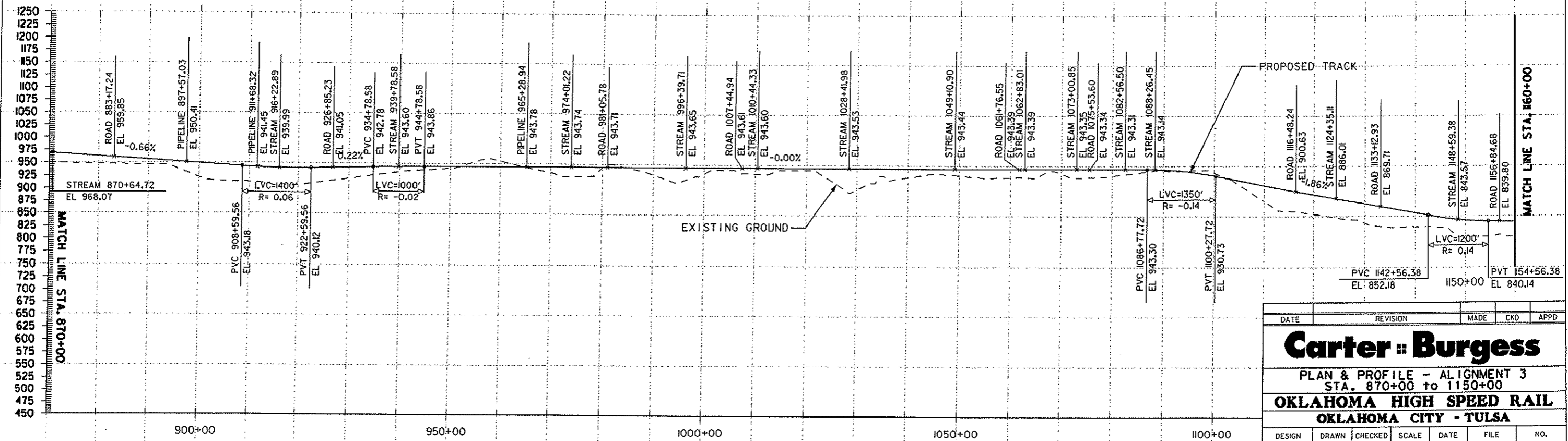
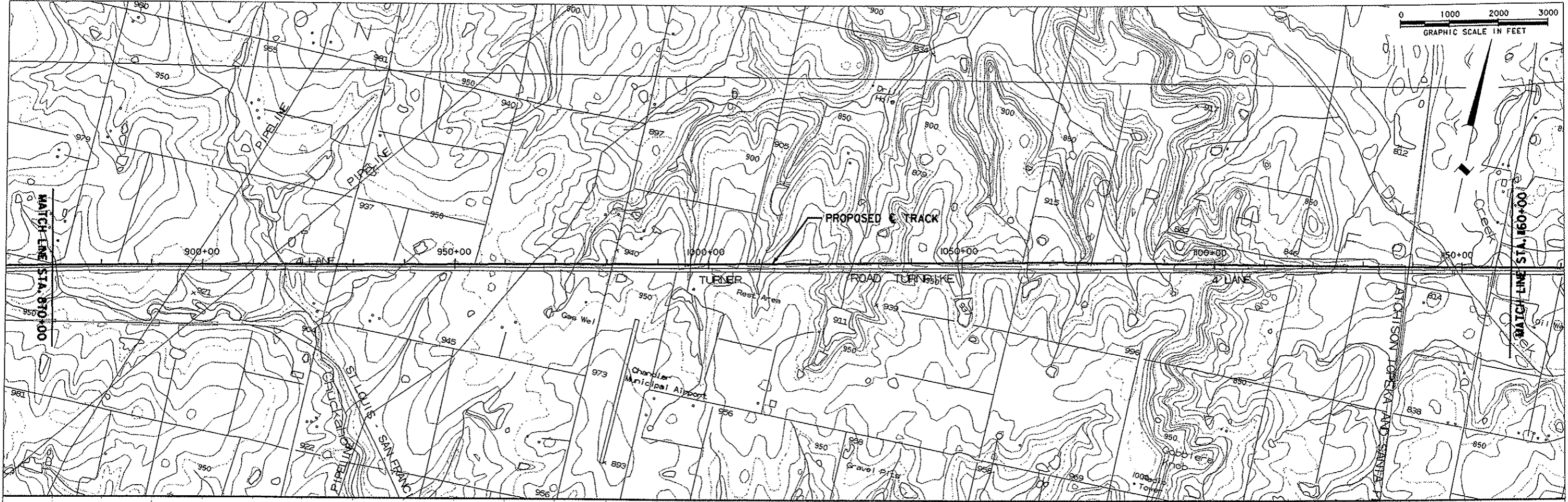
DATE	REVISION	MADE	CKD	APPD

Carter = Burgess

PLAN & PROFILE - ALIGNMENT 1
 STA. 1250+00 TO 1473+18.05
OKLAHOMA HIGH SPEED RAIL
OKLAHOMA CITY - TULSA

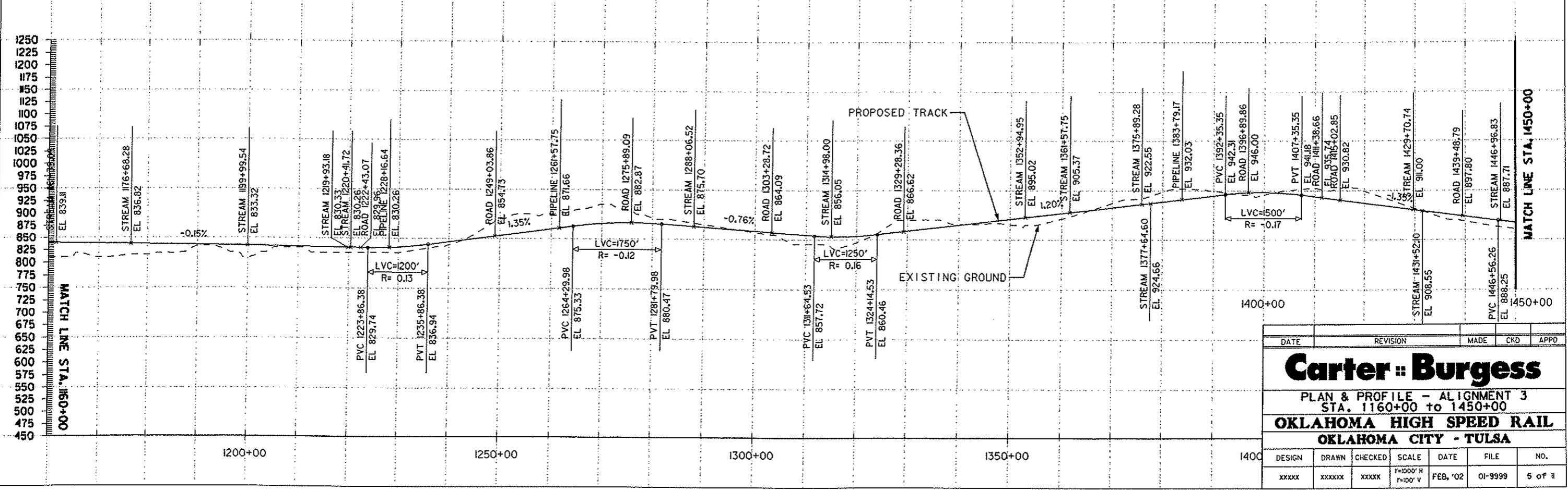
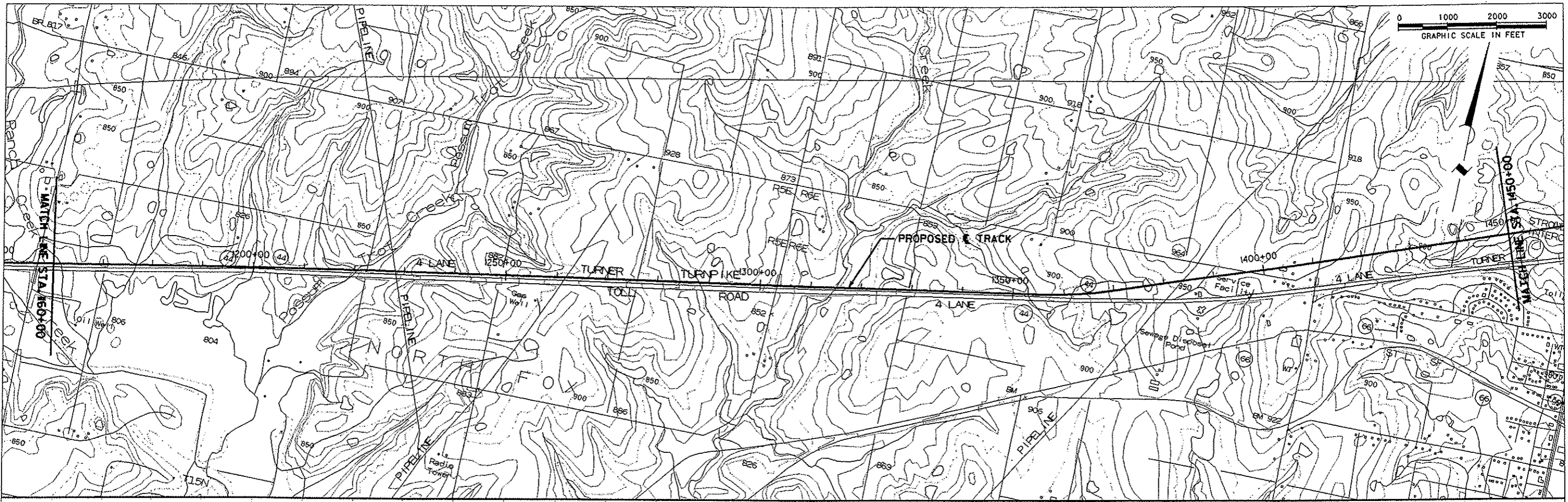
DESIGN	DRAWN	CHECKED	SCALE	DATE	FILE	NO.
XXXX	XXXX	XXXX	H=1000' V=100'	FEB. '02	01-9999	6 of 6

PROJECT: OKLAHOMA HIGH SPEED RAIL - ALIGNMENT 3 - STA. 870+00 TO 1150+00
 DRAWN: J. BURNESS
 CHECKED: J. BURNESS
 DATE: FEB. '02
 SCALE: 1" = 100' H, 1" = 100' V
 FILE: 01-9999
 NO.: 4 OF 11
 PLOTTED: Wed Feb 13 05:58:20 2002
 TEL: 405.231.4000 FAX: 405.231.4001
 WWW: www.carterburgess.com



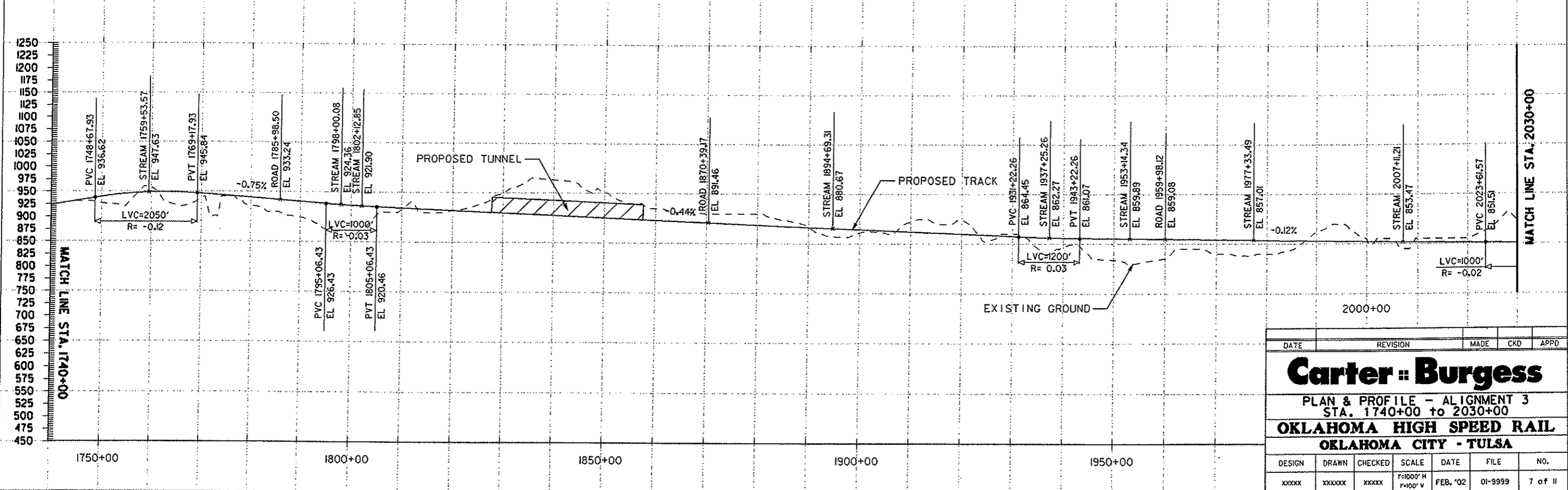
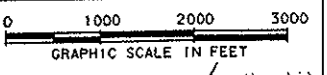
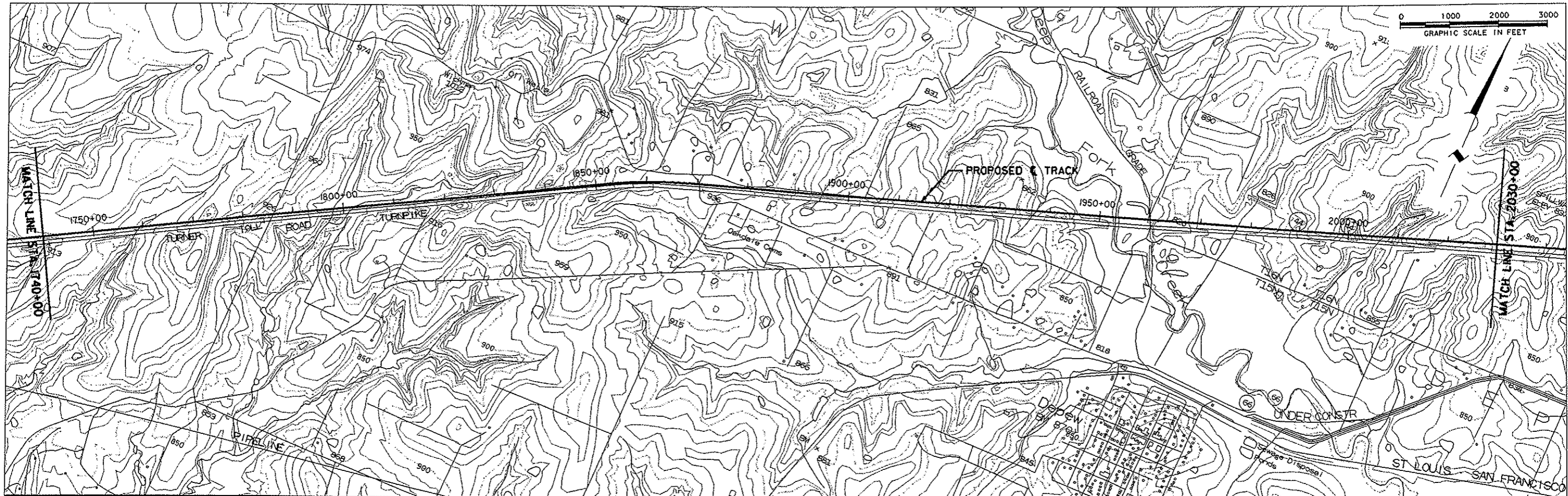
DATE	REVISION	MADE	CKD	APPD		
Carter :: Burgess						
PLAN & PROFILE - ALIGNMENT 3 STA. 870+00 TO 1150+00						
OKLAHOMA HIGH SPEED RAIL						
OKLAHOMA CITY - TULSA						
DESIGN	DRAWN	CHECKED	SCALE	DATE	FILE	NO.
XXXXX	XXXXXX	XXXXX	H=1000' V=100'	FEB. '02	01-9999	4 OF 11

OKLAHOMA HIGH SPEED RAIL PROJECT - PLAN & PROFILE - ALIGNMENT 3 - OKLAHOMA CITY - TULSA
 DATE: 02/01/02
 DRAWN: J. BURNESS
 CHECKED: J. BURNESS
 SCALE: 1"=100' H, 1"=100' V
 FILE: 01-9999
 NO. 5 OF 11



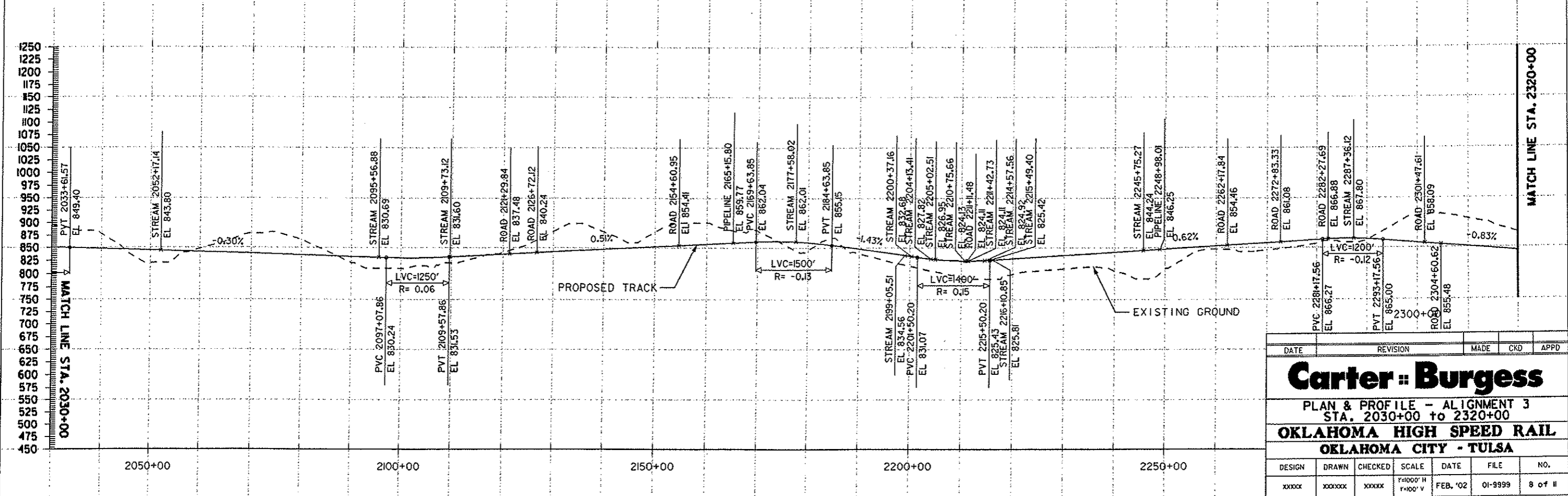
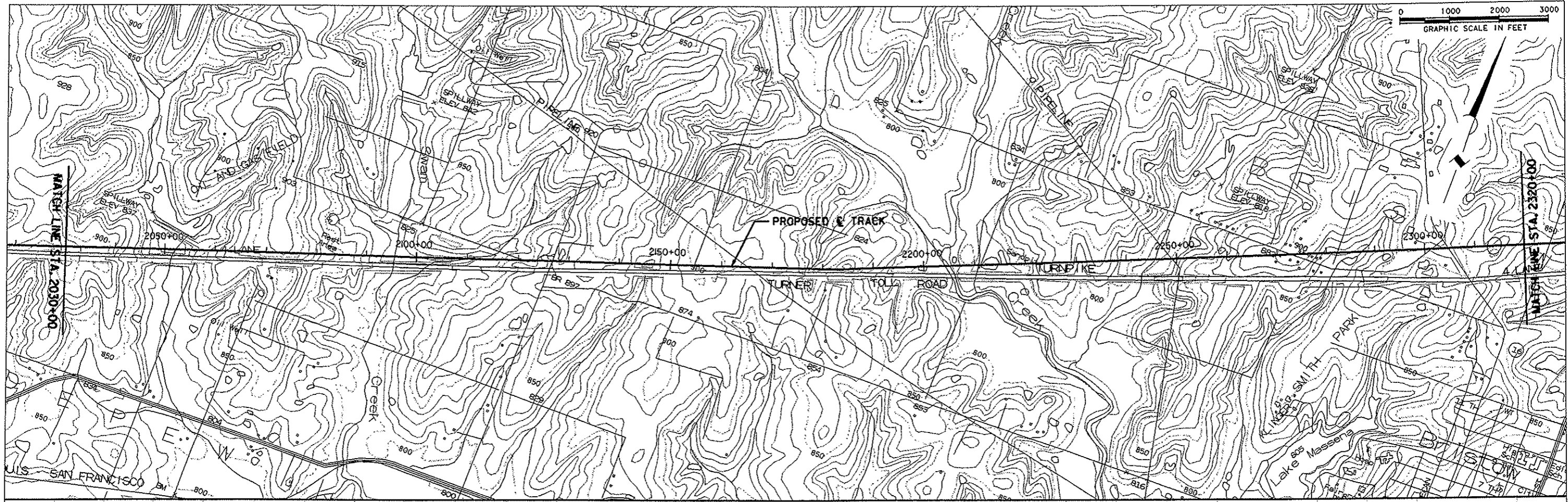
DATE	REVISION	MADE	CHKD	APPD		
Carter :: Burgess						
PLAN & PROFILE - ALIGNMENT 3 STA. 1160+00 TO 1450+00						
OKLAHOMA HIGH SPEED RAIL						
OKLAHOMA CITY - TULSA						
DESIGN	DRAWN	CHECKED	SCALE	DATE	FILE	NO.
XXXX	XXXXXX	XXXX	H=1000' V=100'	FEB, '02	01-9999	5 OF 11

PLOTTED Wed Feb 13 16:00:19 2002
 USER: gmg
 JOB: 01-9999
 SCALE: 1"=1000'
 DATE: FEB '02
 FILE: 01-9999
 NO: 7 of 11



DATE	REVISION	MADE	CKD	APPD		
Carter :: Burgess						
PLAN & PROFILE - ALIGNMENT 3 STA. 1740+00 to 2030+00						
OKLAHOMA HIGH SPEED RAIL						
OKLAHOMA CITY - TULSA						
DESIGN	DRAWN	CHECKED	SCALE	DATE	FILE	NO.
XXXXX	XXXXXX	XXXXX	1"=1000' H 1"=100' V	FEB, '02	01-9999	7 of 11

PROJECT: OKLAHOMA HIGH SPEED RAIL - ALIGNMENT 3 - STA. 2030+00 TO 2320+00
 DATE: 02/13/02
 DRAWN: J. BURNESS
 CHECKED: J. BURNESS
 SCALE: 1"=100' H, 1"=100' V
 FILE: 01-9999
 NO. 8 of 11



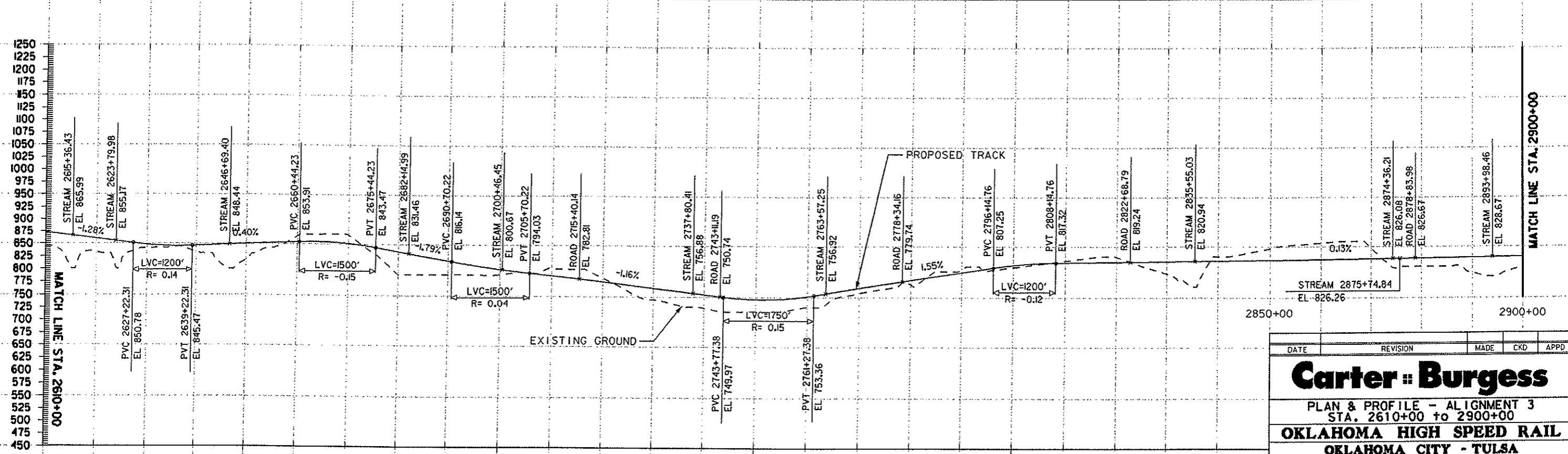
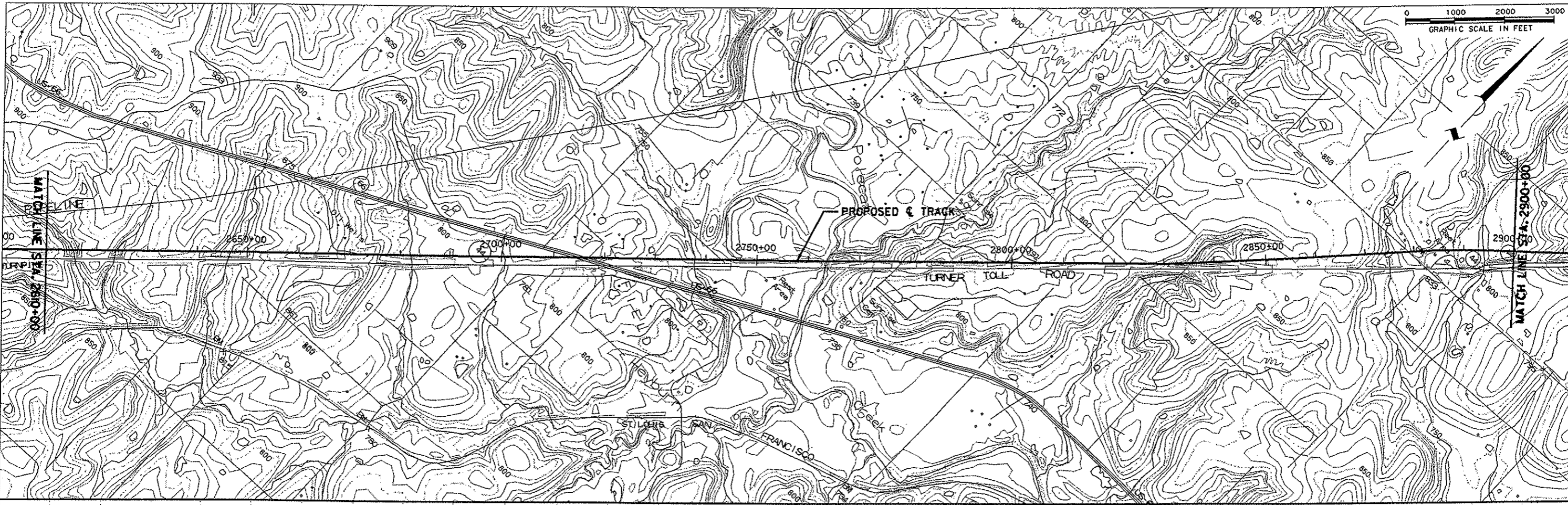
DATE	REVISION	MADE	CKD	APPD

Carter :: Burgess

PLAN & PROFILE - ALIGNMENT 3
 STA. 2030+00 TO 2320+00
OKLAHOMA HIGH SPEED RAIL
OKLAHOMA CITY - TULSA

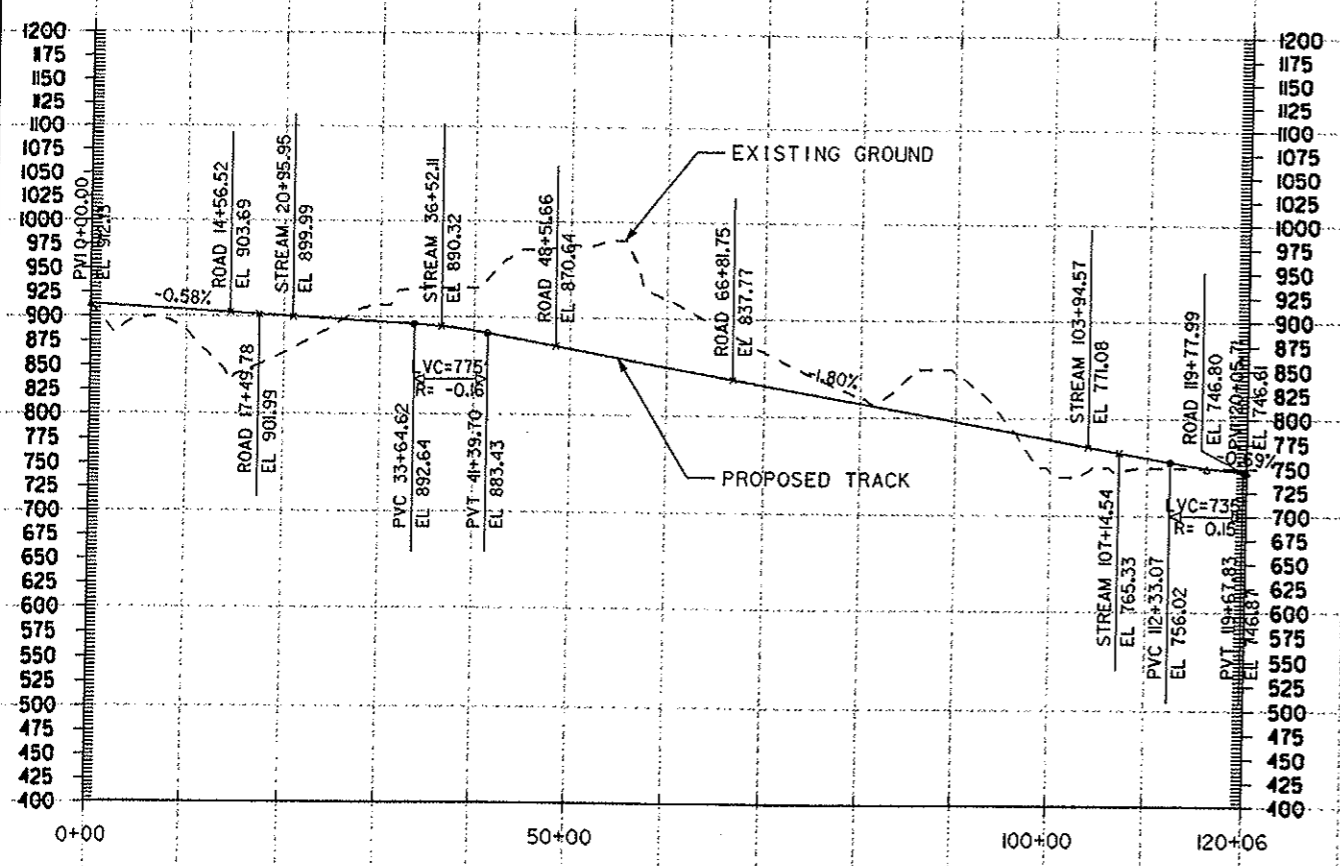
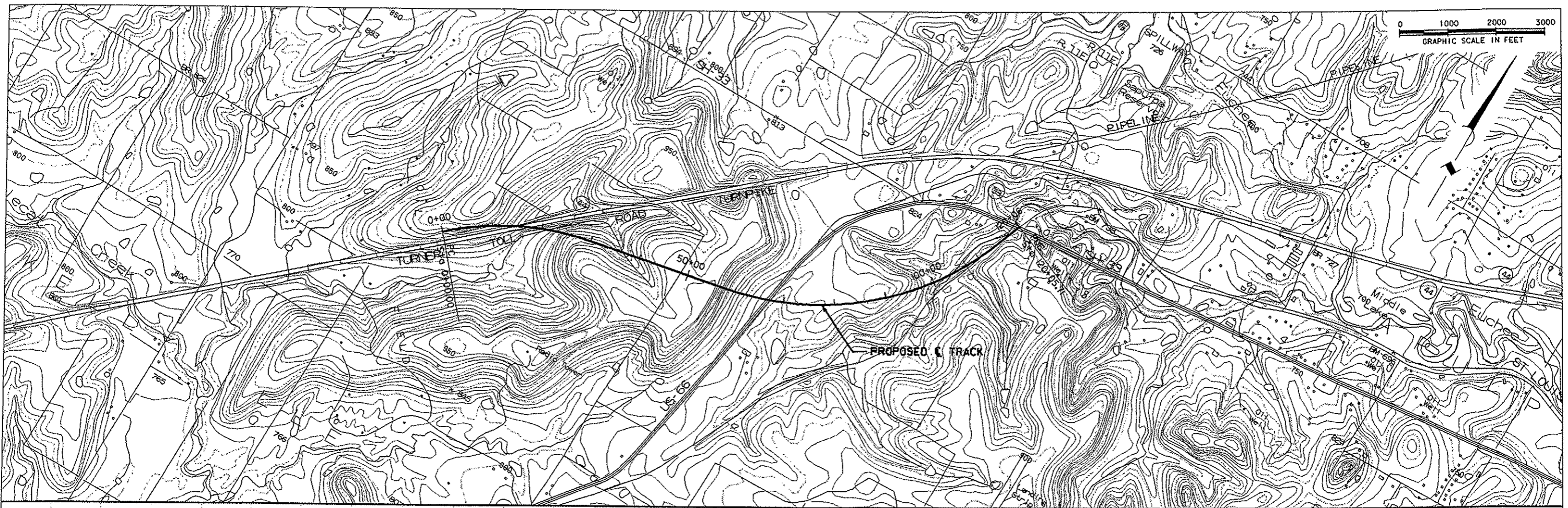
DESIGN	DRAWN	CHECKED	SCALE	DATE	FILE	NO.
XXXX	XXXXX	XXXXX	1"=100' H 1"=100' V	FEB. '02	01-9999	8 of 11

PROJECT: OKLAHOMA HIGH SPEED RAIL - ALIGNMENT 3 - STA. 2610+00 TO 2900+00
 DRAWN BY: J. BURNESS
 CHECKED BY: J. BURNESS
 DATE: FEB. '02
 SCALE: 1" = 100' H, 1" = 100' V
 PLOT DATE: FEB. 11, 2002



DATE	REVISION	MADE	CKD	APPD		
Carter Burgess PLAN & PROFILE - ALIGNMENT 3 STA. 2610+00 TO 2900+00 OKLAHOMA HIGH SPEED RAIL OKLAHOMA CITY - TULSA						
DESIGN	DRAWN	CHECKED	SCALE	DATE	FILE	NO.
XXXXX	XXXXXX	XXXXX	H=1000' V=100'	FEB. '02	01-9999	10 of 11

DATE: 01/03/02
 DRAWN: JES
 CHECKED: JES
 SCALE: 1"=100'
 DATE: FEB '02
 FILE: 01-9999
 NO: 1 of 1



DATE	REVISION	MADE	CKD	APPD

Carter :: Burgess

PLAN & PROFILE - ALIGNMENT 5
 STA. 0+00 to 120+05.71

OKLAHOMA HIGH SPEED RAIL
OKLAHOMA CITY - TULSA

DESIGN	DRAWN	CHECKED	SCALE	DATE	FILE	NO.
XXXX	XXXXX	XXXX	1"=1000' H 1"=100' V	FEB, '02	01-9999	1 of 1