



Forty oil wells —  
Bartlesville has a replica  
of the Miller Johnston,  
first commercial oil well  
in Oklahoma.

# Oklahoma 1974 Map Welcome to Oklahoma

OFFICIAL STATE HIGHWAY MAP FOR FREE DISTRIBUTION

Oklahoma has its eyes on the future, but we've always been aware of the rich inheritance we enjoy from those who carved this vital, energetic State in a few short years. We pause to salute those who have given us this heritage and to invite you to travel our highways and see the living heritage that is still here, where it happened.



David Hall  
GOVERNOR



Cattle herd travels in Western Oklahoma.



Oklahoma family crosses the Cimarron to homestead in 1902.



Camping and cookouts were work not recreation for cowhands.



Arkansas River Navigation Canal opened Muskogee to seaports of world. This paddlewheeler had same idea 50 years earlier.



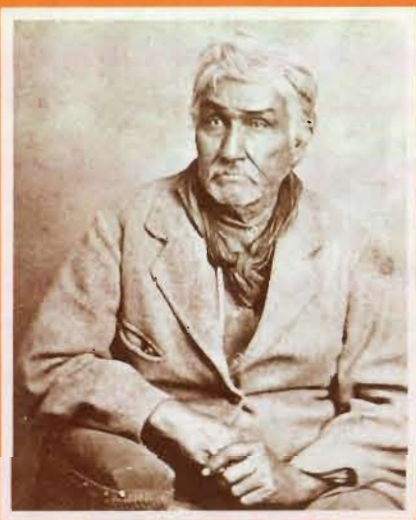
Owasso Drugstore had early hospitality for tired travelers.



The Land Rush is on!



From Beaver County sod schoolhouse in 1900 to great universities in 1974.



Jesse Chisholm — trader on famed cattle trail from Texas to Kansas.



Advertising for Wild West Show. Ponca City has 101 Ranch material at Pioneer Woman Museum.



Bathing pool at Sulphur, Indian Territory, draws visitors today as Platt National Park.



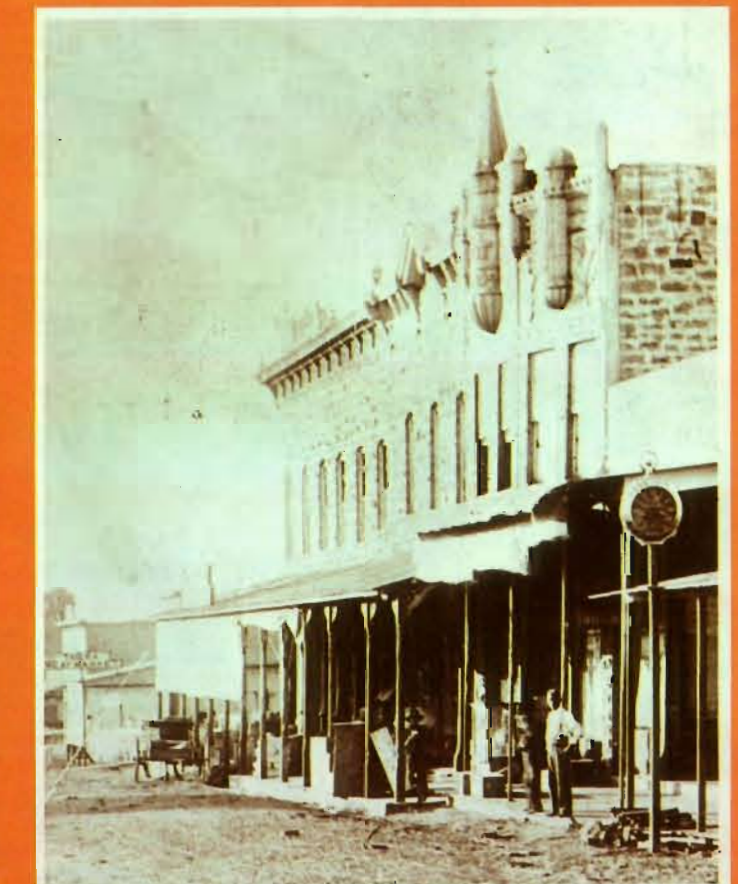
These Kiowas were among 67 tribes assigned to Indian Territory. Oklahoma has more Indian citizens than any other state.

## Highways to History

Oklahoma is the only state settled by a land rush. Here wagons wait to cross the Salt Fork River in 1889.



Panhandle wheat harvest has always been an exciting event.



"Tulsa has it now" ... back in 1894 this was Main Street looking north from Second.



Photo from Ft. Sill Museum in Lawton shows cavalry regiments on parade.



Oklahoma is Will Rogers Country! He said, "You don't know what a country we have until you start prowling around it." The famed humorist's memorial is at Claremore.



Proud pioneers pose by their Beaver County home. An original sod house is preserved in Alfalfa County on SH 8.

### VOTE FOR OKLAHOMA CITY FOR STATE CAPITAL - JUNE 11.

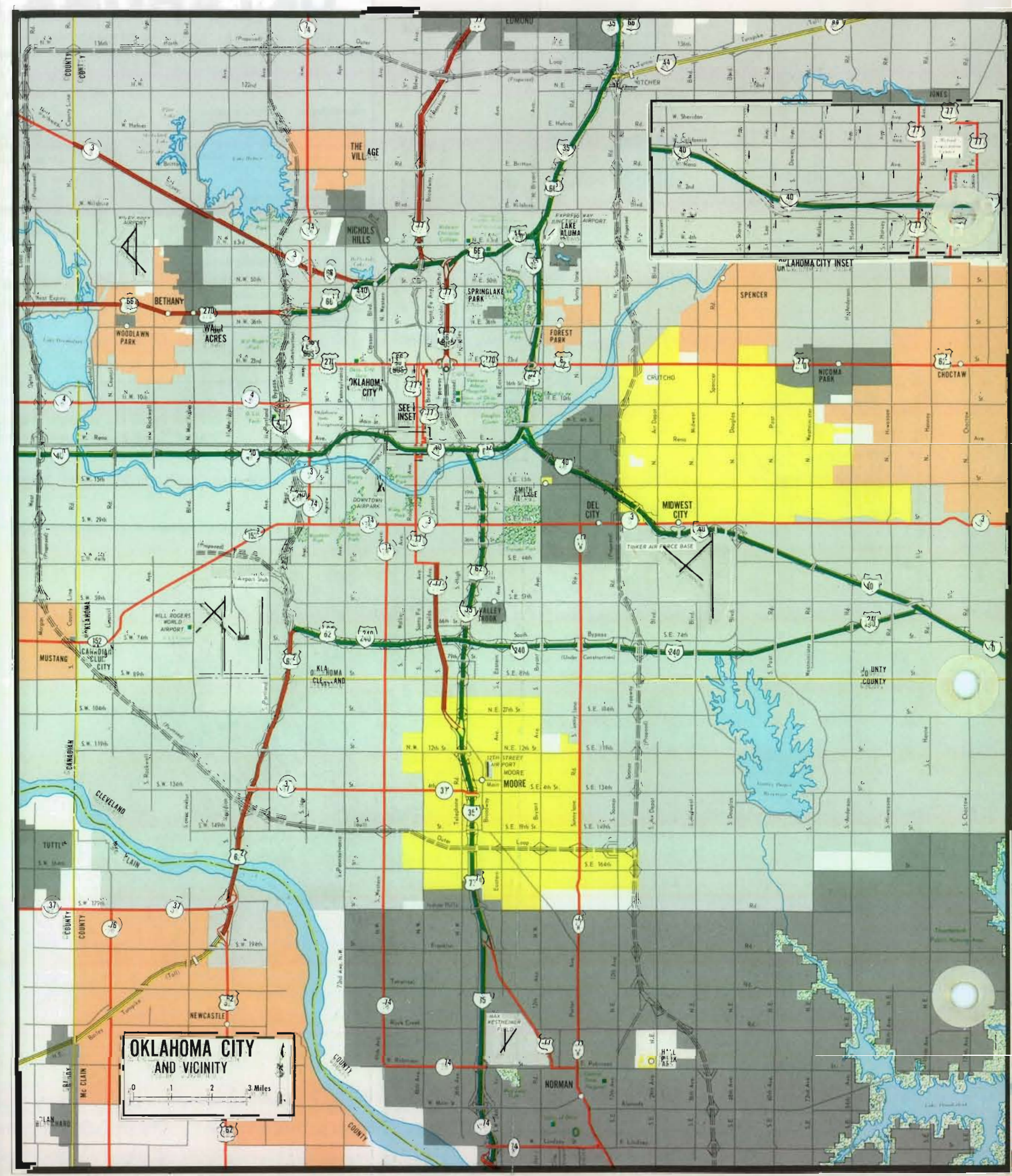
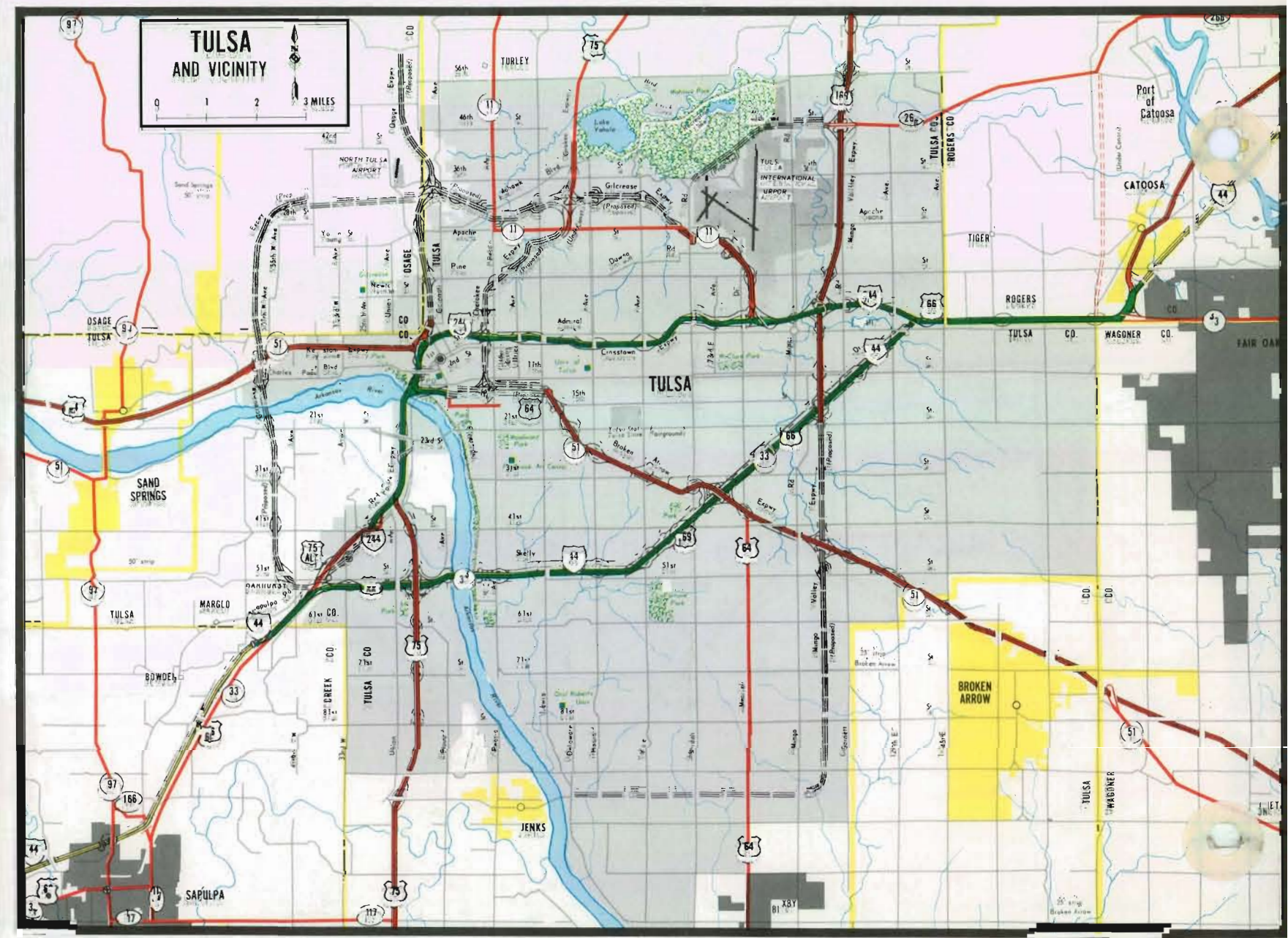
THE MOST SUITABLE CITY — THE PRIDE OF THE STATE

OKLAHOMA CITY STANDS FOR THE DEVELOPMENT OF THE ENTIRE STATE

1910 billboard — Oklahoma City began with pride and continues to grow with pride.



A Cheyenne-Arapaho camp springs up near Fort Reno in early 1890's.



STATE HIGHWAY COMMISSION

C. E. Payne, Chairman  
B. L. Klutts, Vice Chairman  
D. K. Swan, Secretary  
Smith Hester  
Robert M. Kerr  
Wilbur G. Whitbeck  
Richard A. Ward, Director

Photo credits: Beaver County Historical Society; Ft. Sill Museum, Lawton; Gilcrease Museum, Tulsa; Oklahoma City Library; Oklahoma Historical Society; and Western History Collection, University of Oklahoma.