

NEW SEVEN COLOR MAP OF OKLAHOMA CITY AND SUBURBS

COMPILED FROM OFFICIAL RECORDS AND OTHER AUTHENTIC DATA

Oklahoma City is only twenty years old and has a population of over 40,000. It is the largest and richest city in the world for its age.

It is the fastest growing city in the most rapidly developing state in the Union. Being 457 miles from Memphis, 542 miles from St. Louis, 344 miles from Kansas City, 552 miles from Denver, and 237 miles from Dallas and Fort Worth, it is a metropolis that commands the most unusual market situation of the Great Southwest.

PUBLISHED AND COPIED BY THE OKLAHOMA CITY TIMES COMPANY 1909

THE LARGEST REPUBLICAN PAPER AND THE LARGEST AFTERNOON PAPER IN THE STATE

THE OKLAHOMA CITY TIMES

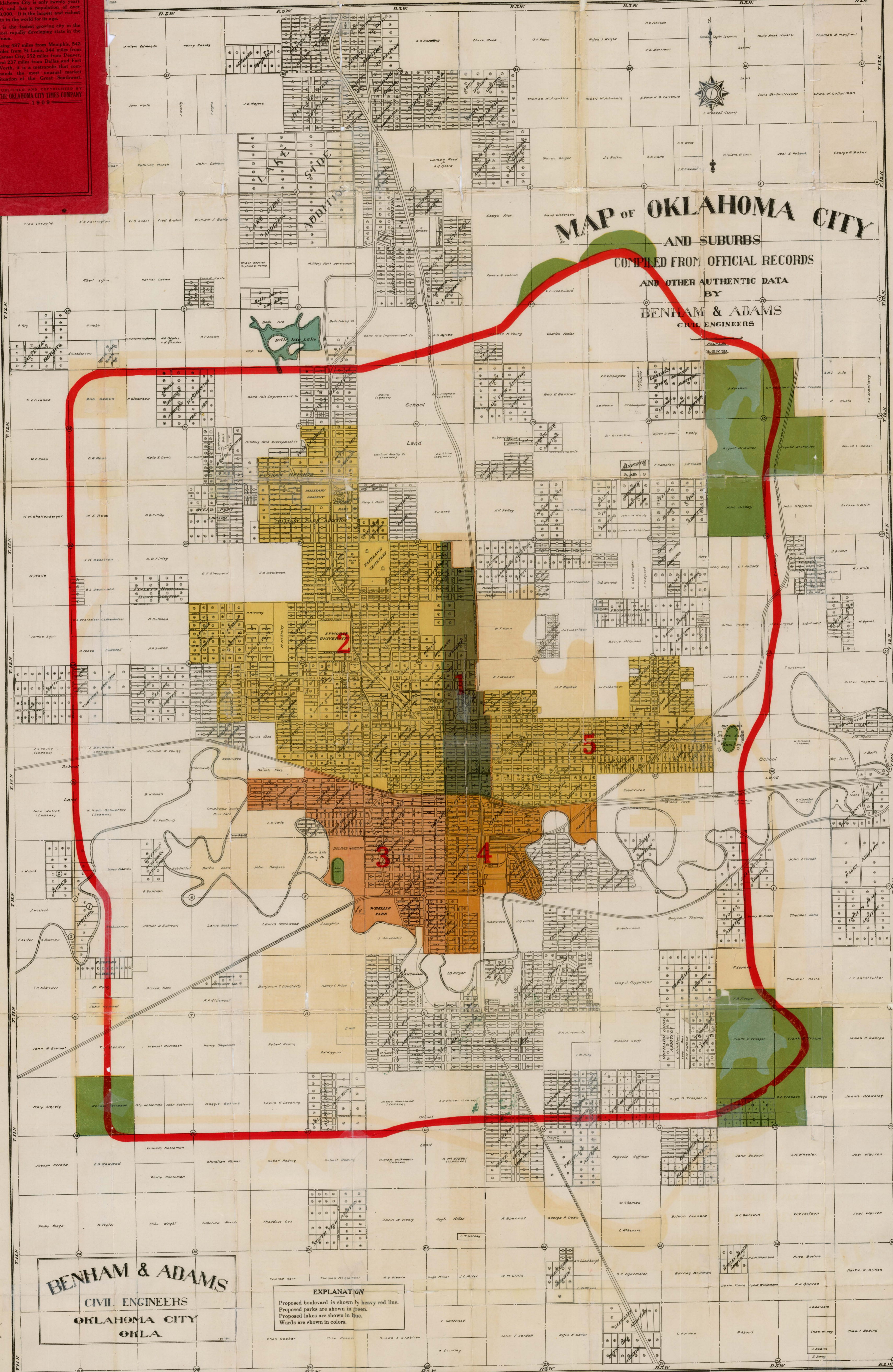
(AND WEEKLY TIMES)

OFFICE: 119 W. SECOND STREET

MAP OF OKLAHOMA CITY FOR 1909, PRICE \$1.00

HEARST SERVICE

THE KENTON COMPANY, MAP MAKERS, DES MOINES, IOWA



MAP OF OKLAHOMA CITY AND SUBURBS

COMPILED FROM OFFICIAL RECORDS AND OTHER AUTHENTIC DATA BY **BENHAM & ADAMS** CIVIL ENGINEERS

BENHAM & ADAMS

CIVIL ENGINEERS
OKLAHOMA CITY
OKLA.

EXPLANATION

Proposed boulevard is shown by heavy red line.
Proposed parks are shown in green.
Proposed lakes are shown in blue.
Wards are shown in colors.

LOCATION OF PROMINENT BUILDINGS

- | |
|---|
| <p>BUSINESS BUILDINGS
Baltimore Bldg., Cor. Harvey & Grand Ave.
Bessett Building, 115 1/2 N. Broadway
Campbell Building, 10 N. Broadway
Chamber of Commerce, 11 N. Robinson St.
Culbertson Building, 30 W. Grand Avenue
India Temple, 301 North Broadway
Lee Building, 104 N. Robinson St.
Majestic Building, Cor. Main & Harvey
Pioneer Building, 100 1/2 N. Broadway</p> <p>CEMETERIES
Fairlawn Cemetery, Entrance on Western Ave., Opposite 27th St.
Jewish Cemetery, Western Ave. & 27th St.</p> <p>CHURCHES
First Church, 131 W. Fourth St. (Methodist)
First Church of Christ, 130 W. Third St. (Christian)
First Church of Christ, 1202 N. Robinson St. (Christian Science)
First Church, 222 W. Third St. (Lutheran)
First Church, 621 N. Broadway (Presbyterian)
Plymouth Church, 234 W. of Epworth University (Congregational)
St. Joseph's Cathedral, 301 W. Fourth St. (Catholic)
Temple B'nai Israel (Jewish Synagogue)</p> <p>FIRE DEPARTMENT
Central Station, 23-25 1/2 Broadway</p> <p>HALLS
Auditorium, 501 W. California
Elk's Hall, 203 W. Main St.</p> <p>HOSPITALS, HOMES
Keely Institute, 1225 N. Broadway
Roland's Hospital, 322 E. Fourth St.
Marcy Hospital, near Wheeler Park</p> <p>ST. PAUL'S CHURCH, 1317 Seventh St. (Epis.)
ST. ANTHONY'S HOSPITAL, 621 W. Ninth St. (Copa)WHITE TEMPLE, 4000 N. Broadway (Baptist)</p> <p>GRAND AVENUE HOTEL, 208 W. Grand Ave.
LEE-HUCKLES HOTEL, 12 N. Broadway
SARATOGA HOTEL, 17 S. Broadway
THREEDRIFT HOTEL, Second St. & Broadway</p> <p>NEWSPAPERS
The Oklahoman, N. E. Cor. Fourth & Broadway
The Oklahoma City Times
The Oklahoma News, 328 W. Grand Ave.
Oklahoma Farm Journal, Western Newspaper Union Bldg.</p> <p>HOTELS
Sturn's Oklahoma Magazine, Western Newspaper Union Bldg.</p> <p>PARKS AND PUBLIC GROUNDS
Belle Isle Park, North of City Limits
Oklond Park, Southwest Cor. Western Ave. and W. Noble Ave.
Delmar Garden, Southwest Corner Western Ave. and W. Noble Ave.
Putnam Park, Epworth Bldg. and 34th St.
Siles Park, Junction of Harrison Ave., Siles Ave. and Eighth St.
Wheeler Park, S. Shattell Ave., between Canal and Canadian Ave.</p> <p>PUBLIC BUILDINGS
Carnegie Library, 113 W. Third St.
City Hall, 107 W. Grand Ave.
Court House, Dewey, between Main & Grand
Federal Building, Third & Robinson
Post Office, 16 N. Harvey St.</p> <p>RAILROADS
Atchison, Topeka & Santa Fe, California & Santa Fe
Chicago, Rock Island & Pacific Ry., 200 N. Broadway
Metropolitan Street Company, Cor. Hudson & Grand Ave.
Overholser Opera House, 215 W. Grand Ave.</p> <p>SCHOOLS
Epworth University, North & Clamen Bldg.
High School, Walnut, between Third & Fourth Sts.
New High School Bldg., Seventh & Robinson</p> <p>THEATERS
Folly Theater, 113 W. Grand Ave.
Metropolitan Street Company, Cor. Hudson & Grand Ave.
Overholser Opera House, 215 W. Grand Ave.</p> <p>WATER SYSTEM: 8,000,000 Daily Capacity; 68 Miles of Main, 85 Miles of Sewer. Efficiency of City Water, 98.7 Pures, According to Lake Michigan Standard. Forty-five Miles of Paving; 12 Miles Under Contract. Forty Miles of Metropolitan Street Railway and Interurban Service. \$125,000.00 County Court House. Altitude, 1,247. Mean Annual Temperature, 60°. Average Annual Rainfall 31 Inches.</p> <p>ESTIMATED POPULATION 45,000. Total Tax Rate 22.6 Mills. Assessed Valuation City Property Based on 50% Value, \$27,000,000.00. City of Schools and Churches. Ten Public School Buildings. One University. \$300,000.00 High School Under Contract. Forty Church Buildings. Bishops of the Catholic, Methodist Episcopal and Episcopal Churches. Telephone System, 5,000 Connections. Twelve Banks.</p> <p>FACTS ABOUT OKLAHOMA CITY
Eight First-Class Hotels. Lee-Huckles, Ten Story Building.
Three Daily Newspapers.
Best Fire Department in the Southwest.
Amusement Center of the State.
Permanent Home of the State Fair.
Four Trunk Lines Operating in the Southwest Intersect at Oklahoma City. Receives 80% of Population of State Without Transfer From Initial Lines.
1900 will be Skycraper Year in Oklahoma City.</p> |
|---|