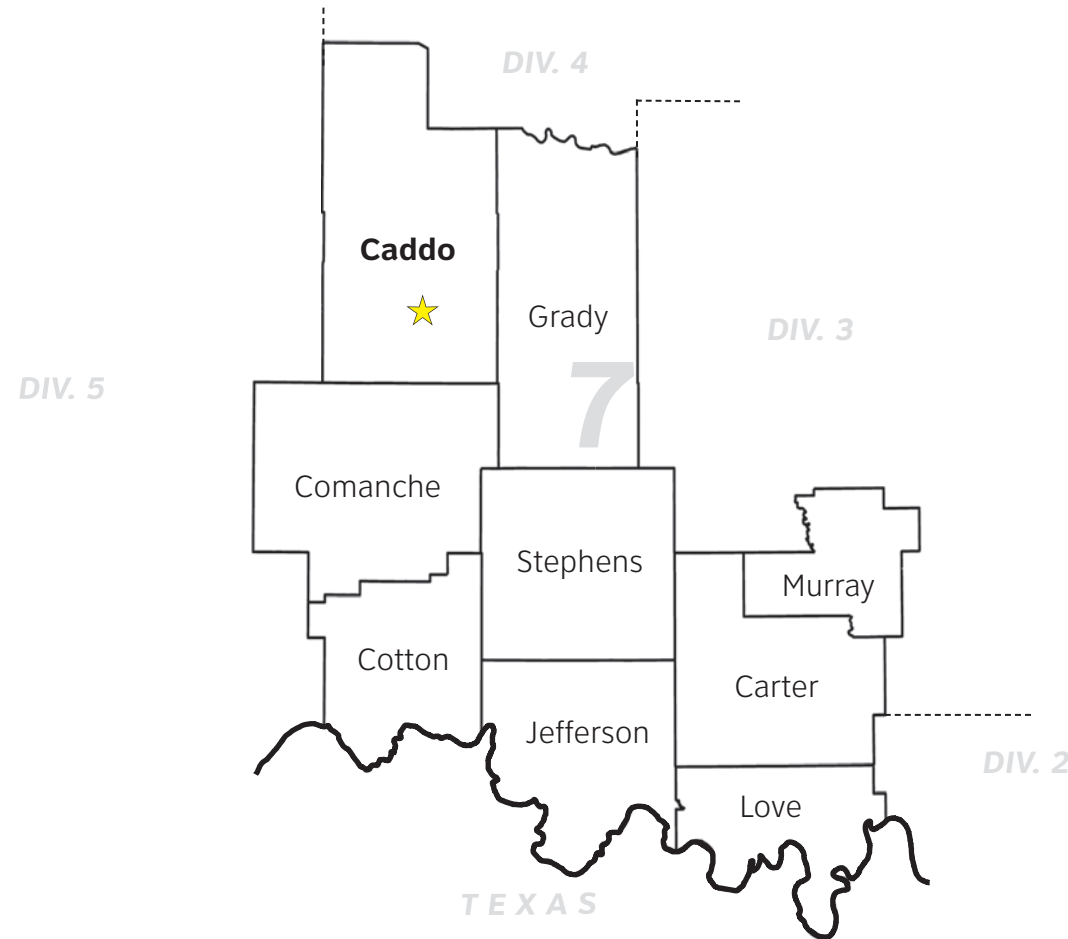


DIVISION 7 INFORMATION

•Division Engineer:	<i>Bob Rose</i>
•Total Road Miles:	<i>1,423.85</i>
•Total Interstate Miles:	<i>95.32</i>
•Total Bridges:	<i>793</i>
•Counties Serviced:	<i>9</i>



Visit us on your mobile device! Use the QR barcode to the left with your barcode reader of choice to visit ODOT.org on the go.

QUESTIONS? COMMENTS?

If you have any questions or comments about the Oklahoma Department of Transportation's proposed projects, please visit www.odot.org/meetings/other.php to fill out an official comment form, or send an e-mail to environment@odot.org for any questions you have.

OKLAHOMA DEPARTMENT OF TRANSPORTATION

Environmental Programs Division, 200 N.E. 21st St., Oklahoma City, OK 73105

THE OKLAHOMA DEPARTMENT OF TRANSPORTATION

SH-8 PUBLIC MEETING

Cyril High School
203 W. Windle Street
Cyril, OK 73029

October 23rd, 2014
@ 6:00 p.m.



Welcome to The Oklahoma Department of Transportation Public Meeting for SH-8, north of Cyril in Caddo County, OK

PURPOSE OF MEETING

The purpose of this meeting is to inform the public & solicit comments relevant to alternatives the Department has identified as improvements which can be made to the SH-8 corridor.

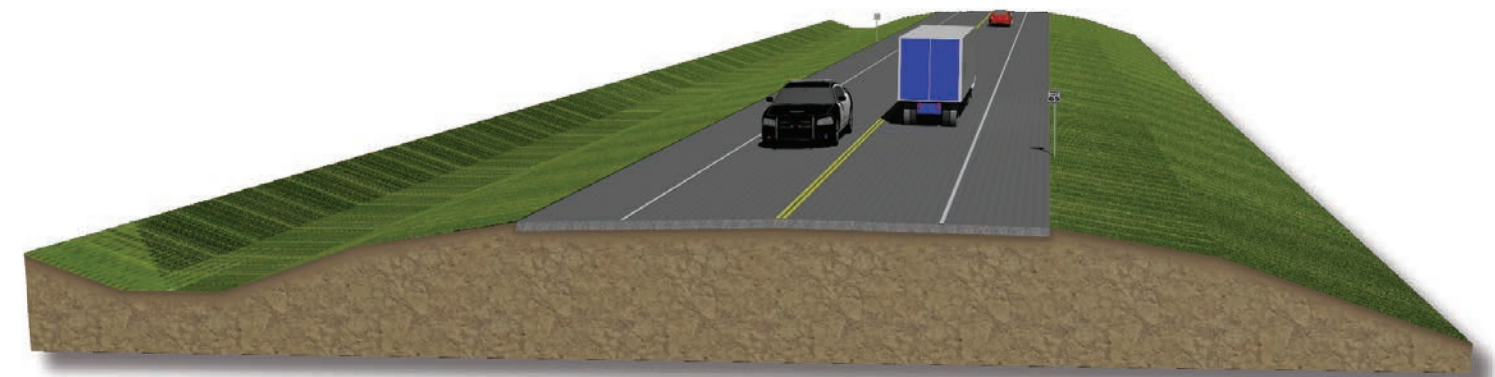
PURPOSE OF PROJECT

The purpose of the project is to improve the safety and functionality of the SH-8 corridor in Caddo County from Cyril north approximately 9 miles toward Anadarko.

DESCRIPTION

The Oklahoma Department of Transportation (ODOT), in cooperation with the Federal Highway Administration (FHWA), is proposing to improve SH-8 in Caddo County from Cyril north approximately 9 miles toward Anadarko. The existing highway through this extent lacks shoulders, has areas of limited sight distance due to steep grades and includes two sharp curves.

ODOT has tasked a consultant to study several alternatives to improve SH-8 taking into consideration construction cost, right-of-way requirements, traffic analysis, utility impacts, oil and gas well impacts, and preliminary environmental constraints associated with each. This meeting is being conducted in order to present these alternatives to the public and to seek input to aid ODOT in selecting a preferred alternative to move forward with design, detailed environmental studies and construction.



2-LANE UNDIVIDED TYPICAL SECTION

This undivided typical section includes 2-12' driving lanes, with 8' paved shoulders on either side.

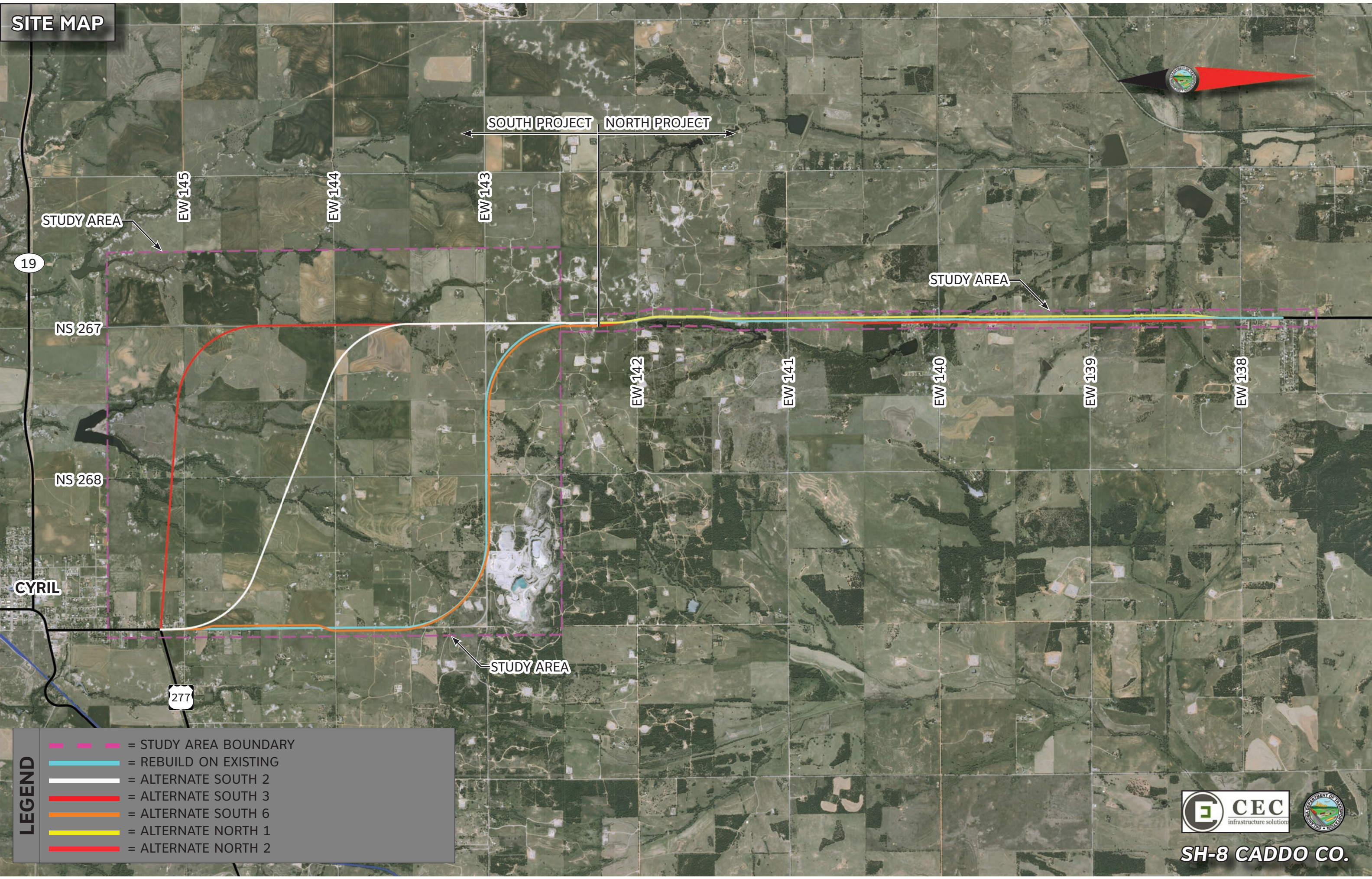
PROJECT INFORMATION

- Estimated Total Cost of these projects are \$12.4 Million(North project) & \$14.7 Million(South project)
- Right-of-Way & Utility Relocation projected to start in 2017(North project) & 2019(South project)
- Construction on the SH-8 project projected to start in 2020(North project) & 2021(South project)
- Reconstruction of the highway facility with 2-12' lanes with 8' paved shoulders
- Project to be constructed under traffic (no road closure)
- Current ADT (Average Daily Traffic) = 1,800(North project) & 1,100(South project) vehicles a day
- Future estimated ADT = 2,900(North project) & 1,800(South project) vehicles a day

SITE MAP



SOUTH PROJECT NORTH PROJECT



LEGEND

- = STUDY AREA BOUNDARY
- = REBUILD ON EXISTING
- = ALTERNATE SOUTH 2
- = ALTERNATE SOUTH 3
- = ALTERNATE SOUTH 6
- = ALTERNATE NORTH 1
- = ALTERNATE NORTH 2



SH-8 CADDO CO.