



POTEAU

SEC. 1  
T7N R25E

SEC. 12  
T7N R25E

SEC. 31  
T8N R26E

SEC. 32  
T8N R26E

SEC. 28  
T8N R26E

SEC. 6  
T7N R26E

SEC. 5  
T7N R26E

SEC. 33  
T8N R26E

SEC. 34  
T8N R26E

STRIP MINES  
PREVIOUSLY  
RECLAIMED

STRIP MINES  
CURRENTLY  
BEING  
RECLAIMED

LEGEND

- POTENTIAL CULTURAL RESOURCES
- POTENTIAL WETLANDS
- POTENTIAL HAZARDOUS WASTE LOCATIONS
- GAS LINE
- WATER LINE
- TELEPHONE UNDERGROUND LINE
- OVERHEAD ELECTRIC LINE
- PUBLIC PROPERTY BOUNDARY
- PRES. RW

0 40 80

SHEET 1 OF 4





SEC. 28  
T8N R26E

SEC. 27  
T8N R26E

SEC. 23  
T8N R26E

SEC. 13  
T8N R26E

SEC. 7  
T8N R27E

SEC. 26  
T8N R26E

SEC. 18  
T8N R27E

SEC. 34  
T8N R26E

SEC. 24  
T8N R26E

SEC. 19  
T8N R27E

CAMERON

MISSOURI PACIFIC RAILROAD

MISSOURI PACIFIC RAILROAD

JAMES FORK CREEK

BRIDGE #19089

BRIDGE #19068

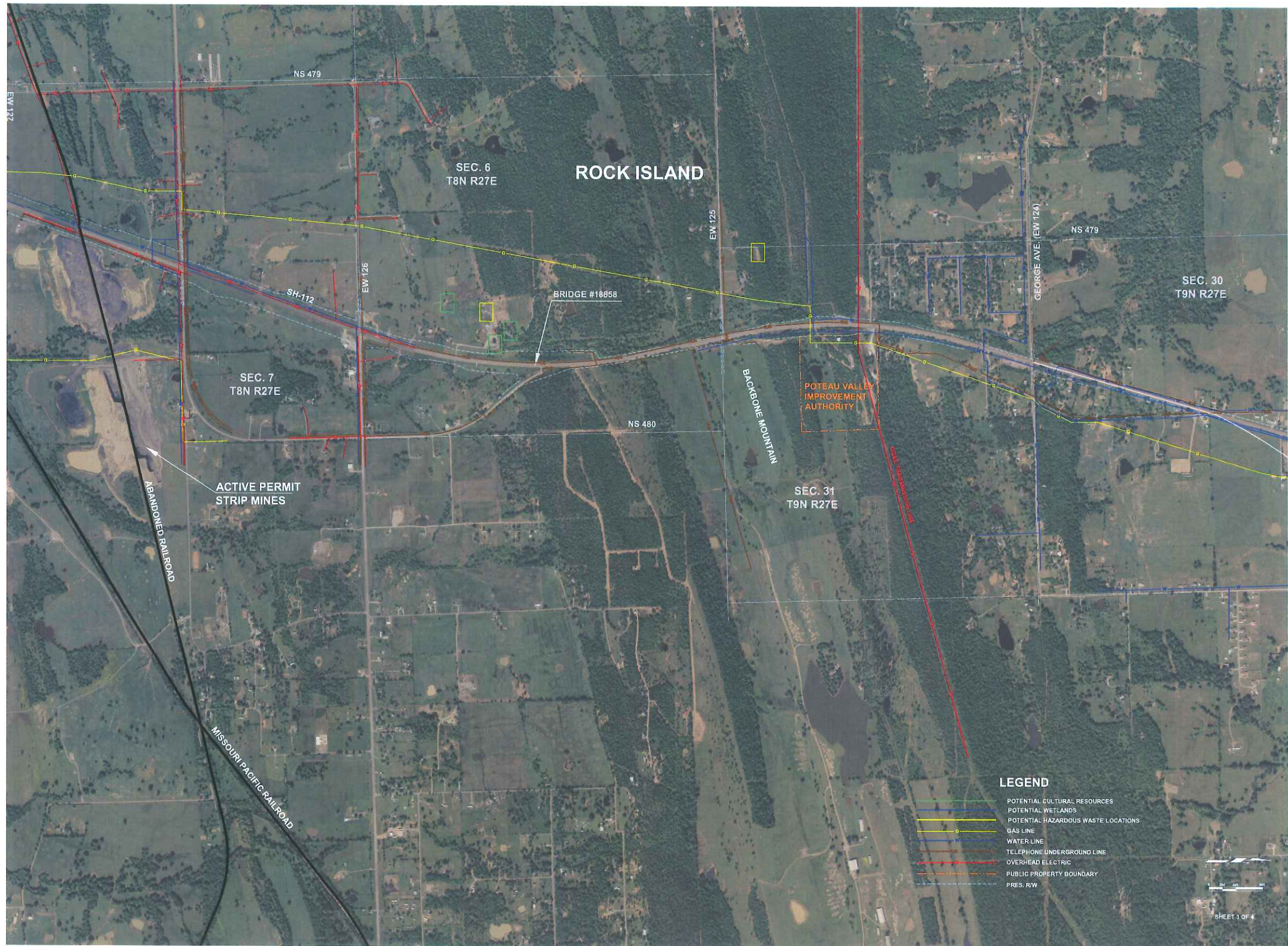
**LEGEND**

- POTENTIAL CULTURAL RESOURCES
- POTENTIAL WETLANDS
- POTENTIAL HAZARDOUS WASTE LOCATIONS
- GAS LINE
- WATER LINE
- TELEPHONE UNDERGROUND LINE
- OVERHEAD ELECTRIC
- PUBLIC PROPERTY BOUNDARY
- PRES. R/W

0 200 400 800

SHEET 2 OF 4





**ROCK ISLAND**

SEC. 6  
T8N R27E

SEC. 7  
T8N R27E

SEC. 30  
T9N R27E

SEC. 31  
T9N R27E

BRIDGE #18858

POTEAU VALLEY  
IMPROVEMENT  
AUTHORITY

ACTIVE PERMIT  
STRIP MINES

ABANDONED RAILROAD

MISSOURI PACIFIC RAILROAD

**LEGEND**

- POTENTIAL CULTURAL RESOURCES
- POTENTIAL WETLANDS
- POTENTIAL HAZARDOUS WASTE LOCATIONS
- GAS LINE
- WATER LINE
- TELEPHONE UNDERGROUND LINE
- OVERHEAD ELECTRIC
- PUBLIC PROPERTY BOUNDARY
- PRES. R/W





