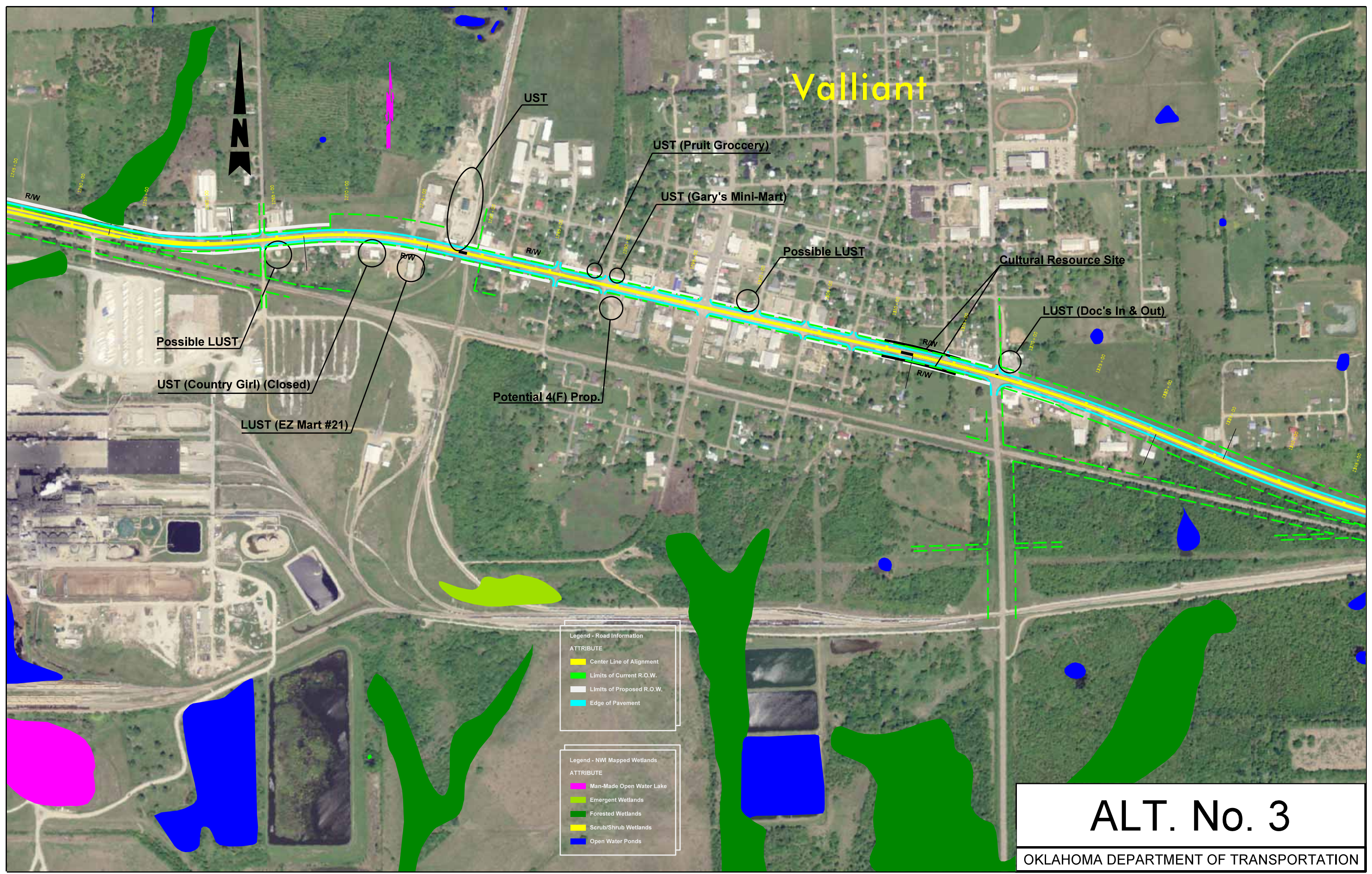


# Valliant



Legend - Road Information

ATTRIBUTE

Yellow line	Center Line of Alignment
Green line	Limits of Current R.O.W.
White line	Limits of Proposed R.O.W.
Cyan line	Edge of Pavement

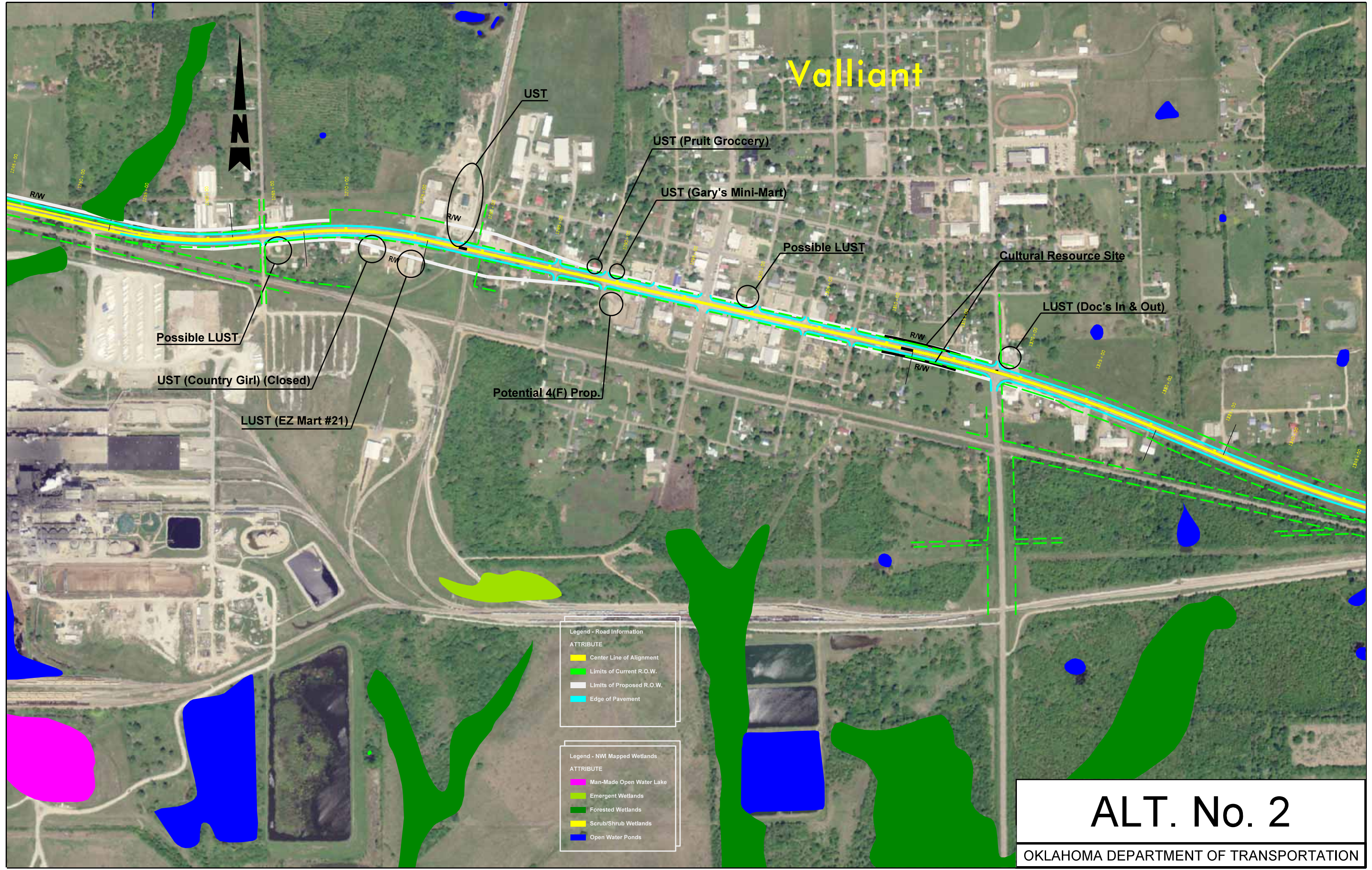
Legend - NWI Mapped Wetlands

ATTRIBUTE

Pink area	Man-Made Open Water Lake
Light green area	Emergent Wetlands
Dark green area	Forested Wetlands
Yellow area	Scrub/Shrub Wetlands
Blue area	Open Water Ponds

**ALT. No. 3**  
OKLAHOMA DEPARTMENT OF TRANSPORTATION

# Valliant



Legend - Road Information

ATTRIBUTE

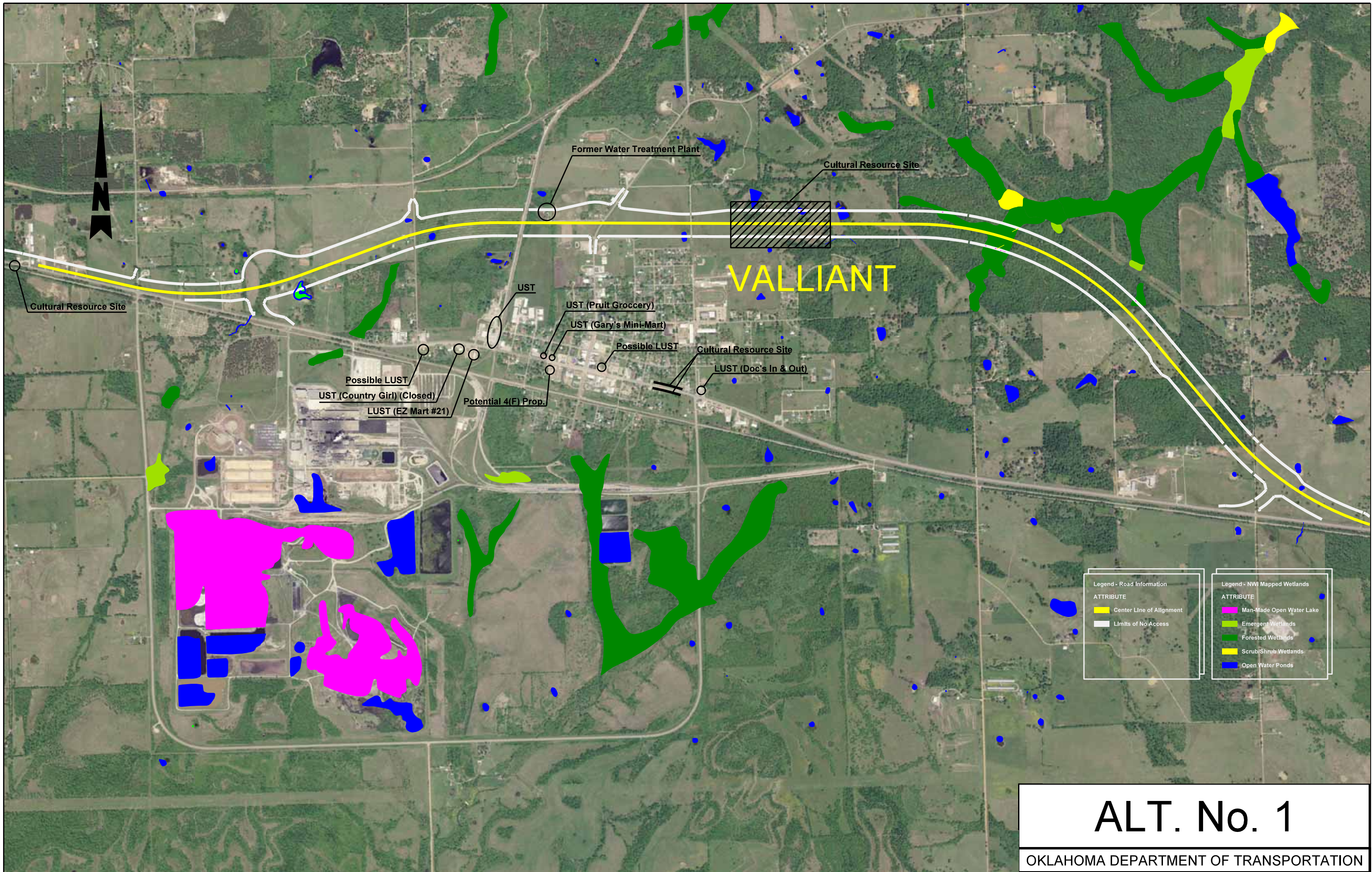
Yellow line	Center Line of Alignment
Green lines	Limits of Current R.O.W.
White lines	Limits of Proposed R.O.W.
Cyan lines	Edge of Pavement

Legend - NWI Mapped Wetlands

ATTRIBUTE

Pink area	Man-Made Open Water Lake
Light Green area	Emergent Wetlands
Dark Green area	Forested Wetlands
Yellow area	Scrub/Shrub Wetlands
Blue area	Open Water Ponds

**ALT. No. 2**  
OKLAHOMA DEPARTMENT OF TRANSPORTATION



Former Water Treatment Plant

Cultural Resource Site

Cultural Resource Site

UST

UST (Pruit Grocery)

UST (Gary's Mini-Mart)

Possible LUST

Cultural Resource Site

LUST (Doc's In & Out)

Possible LUST

UST (Country Girl) (Closed)

LUST (EZ Mart #21)

Potential 4(F) Prop.

Legend - Road Information

ATTRIBUTE

- Center Line of Alignment
- Limits of No Access

Legend - NWI Mapped Wetlands

ATTRIBUTE

- Man-Made Open Water Lake
- Emergent Wetlands
- Forested Wetlands
- Scrub/Shrub Wetlands
- Open Water Ponds