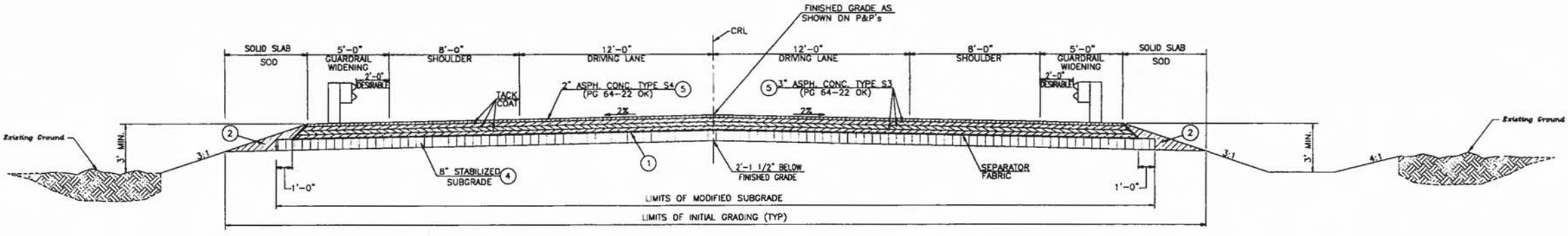


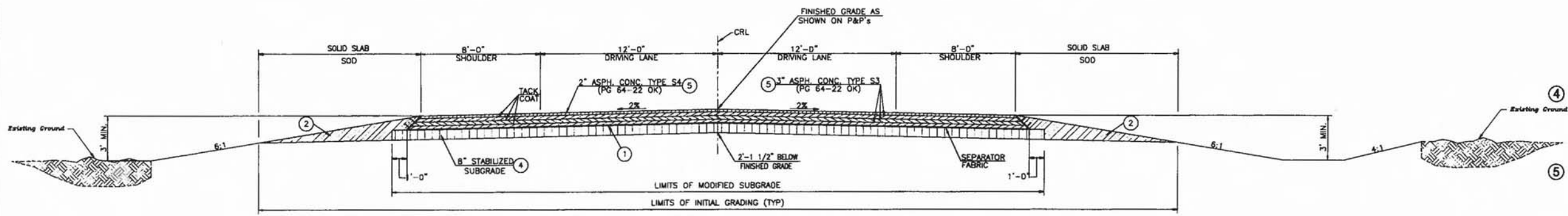
OKLAHOMA DEPARTMENT OF TRANSPORTATION					
FED. ROAD DIST. NO.	STATE	PRJ. NO.	FISCAL YEAR	SHEET NO.	TOTAL SHEETS
	OKLA.	10446(04)	08	2	43
DESCRIPTION		REVISIONS		DATE	



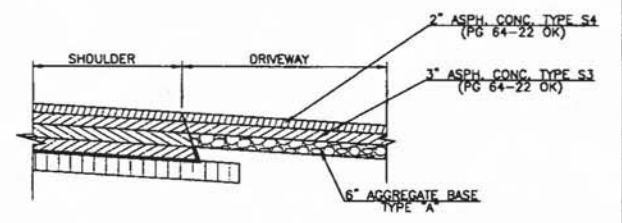
GUARDRAIL SURFACING SECTION
STATION 144+30.02 TO STATION 147+95.02
STATION 155+56.68 TO STATION 159+21.68
Not to Scale

SECTION VARIATIONS:
 STA. 141+50 TO STA. 142+50 TRANSITION FROM EXISTING ROADWAY SECTION TO TYPICAL ROADWAY SECTION
 STA. 143+81.00 TO STA. 144+30.02 TRANSITION FROM TYPICAL ROADWAY SECTION TO GUARDRAIL WIDENED SECTION
 STA. 159+21.68 TO STA. 159+71.68 TRANSITION FROM GUARDRAIL WIDENED SECTION TO TYPICAL ROADWAY SECTION
 STA. 161+00 TO STA. 162+00 TRANSITION FROM TYPICAL ROADWAY SECTION TO EXISTING ROADWAY SECTION

SIDE SLOPE VARIATIONS:
 STA. 146+95.02 TO STA. 147+45.02 TRANSITION FROM 6:1 SIDE SLOPE TO 3:1 SIDE SLOPE
 STA. 156+06.68 TO STA. 156+56.68 TRANSITION FROM 3:1 SIDE SLOPE TO 6:1 SIDE SLOPE



TYPICAL ROADWAY SURFACING SECTION
STATION 142+50 TO STATION 143+80.02
STATION 159+71.68 TO STATION 161+00
Not to Scale



DRIVEWAY SECTION
STA. 161+42

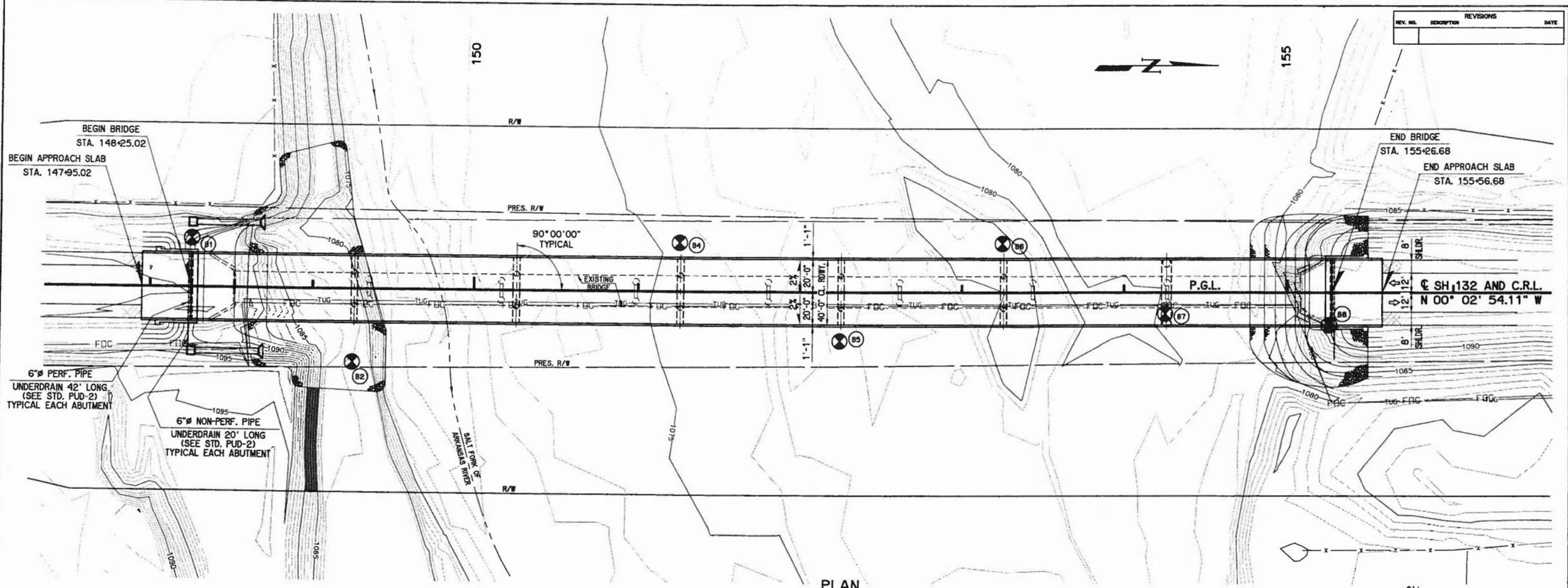
- ① Prims Coat To Be Applied Full Width To The Subgrade For Full Width Of Stabilized Subgrade.
- ② **BACKFILL NOTE:**
This Area To Be Backfilled And Compacted As Part Of The Finishing Operations In A Manner Approved By The Engineer. To be paid for as TBSC, Type E.
- ③ **TOPSOIL NOTE:**
The contractor shall strip all of the available topsoil, stockpile it, and place it back on the section in accordance with section 205 of the standards specification. Reserved topsoil shall be spread first on the completed slopes of the cut sections and the remainder on completed fill slopes or other priority areas located by the engineer. All additional costs associated with operation shall be included in the pay item for salvaged topsoil, lump sum.

The grading line as shown on the typical is to the top of the topsoil. Earthwork quantities were not adjusted for solvage and the Topsoil quantity is included in the Massline Balance.
- ④ Contractor to determine proper modification of subgrade referring to OHD L-51 specification as authorized by the engineer (entire project length).
- ⑤ Each lift of asphalt shall be fog sealed at the end of each day of operation. The fog seal shall be the same material used for tack coat. The estimate for fog seal is based upon 0.025 gallons of tack coat prior to dilution with a dilution rate of 1 part tack coat and 1 part water. The diluted tack coat shall be applied at a rate of 0.05 Gal/S.Y. Payment for tack coat will be measured by the gallon before dilution. Water used in dilution will not be measured for payment. All cost associated with the fog sealing operation shall be included in the asphalt concrete pay items. This fog seal application does not eliminate the need for tack coat between asphalt lifts.

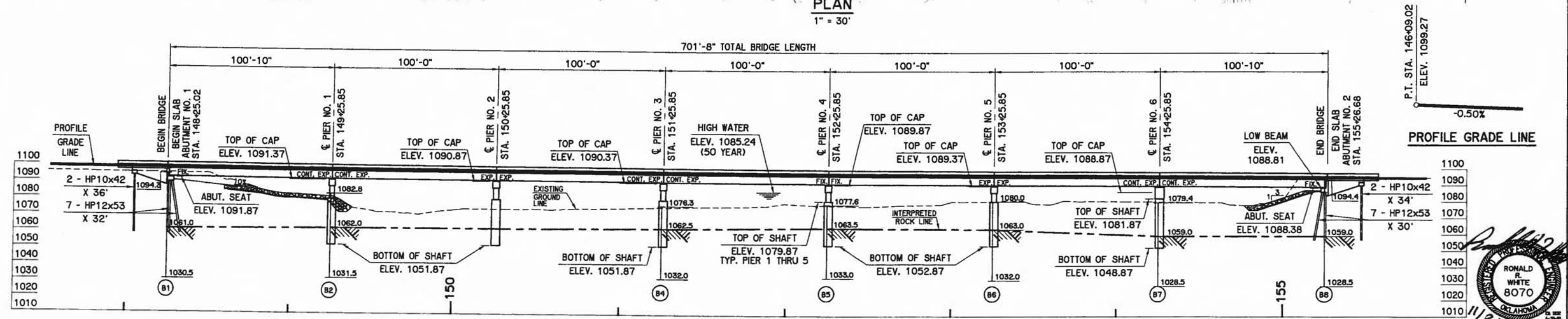
Monday, November 05, 2007 3:27:48 PM G:\07-430 Salt Fork Arkansas LPB\CADD\3-Final\430-Typ-Sec-01.dwg

DESIGN	JEB	10/07	OKLAHOMA DEPARTMENT OF TRANSPORTATION GUY ENGINEERING SERVICES, INC.
DRAWN	KBG	10/07	
CHECKED	JEB	10/07	
APPROVED	JSG	10/07	
SOJAD			
TYPICAL SECTION			
SH-132			
STATE JOB NO. 10446(04) SHEET NO. 2			
GRANT COUNTY SH-132 SALT FORK BRIDGE			

REV. NO.	DESCRIPTION	REVISIONS	DATE



PLAN
1" = 30'

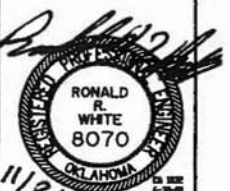


ELEVATION
1" = 30'

ODOT BRIDGE STANDARDS
WILL BE USED ON
THIS STRUCTURE

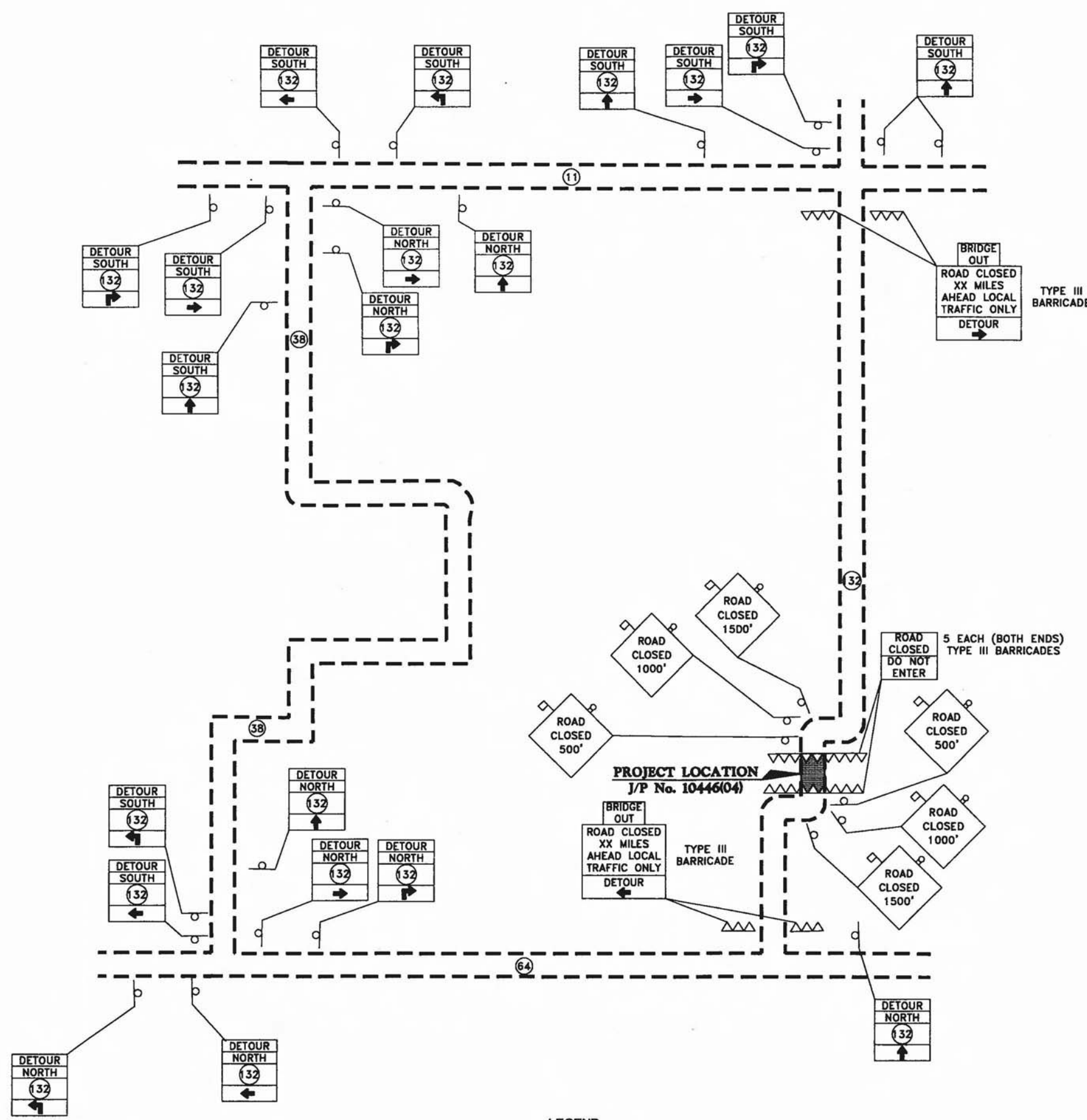
INTERPRETED ROCK LINE SHALL BE
USED FOR ESTIMATING PURPOSES ONLY.

SH 132 OVER SALT FORK OF ARKANSAS RIVER		GRANT COUNTY	
Design	TAC	Detail	KGL
Check	TAC	White Engineering Associates	
STATE OF OKLAHOMA		DEPARTMENT OF TRANSPORTATION	
JOB PRICE NO. 10446(04)		SHEET NO. 24	



I:\Job\0703\DWG\124_PandE.dwg, 11/8/2007 9:50:00 AM, Fred

OKLAHOMA DEPARTMENT OF TRANSPORTATION					
FED. ROAD DIST. NO.	STATE	PROJ. NO.	FISCAL YEAR	SHEET NO.	TOTAL SHEETS
	OKLA.	10446(04)	08	34	43



LEGEND
 ○ SIGN
 △△△ TYPE III BARRICADES

NOTE:
 SH-132 SHALL BE CLOSED DURING CONSTRUCTION (OPEN TO LOCAL TRAFFIC ONLY). DETOUR AS SHOWN.

DESIGN	JEB	10/07
DRAWN	KBG	10/07
CHECKED	JEB	10/07
APPROVED	JSG	10/07
SQUAD		

OKLAHOMA DEPARTMENT OF TRANSPORTATION
 GUY ENGINEERING SERVICES, INC.

SUMMARY OF CONSTRUCTION TRAFFIC CONTROL

STATE JOB NO. 10446(04) SHEET NO. 35
 GRANT COUNTY SH-132 SALT FORK BRIDGE

Monday, November 05, 2007 3:29:27 PM
 G:\07-430 Salt Fork Arkansas LPB\CADD\3-Final\430-DETOUR-MAP.dwg