

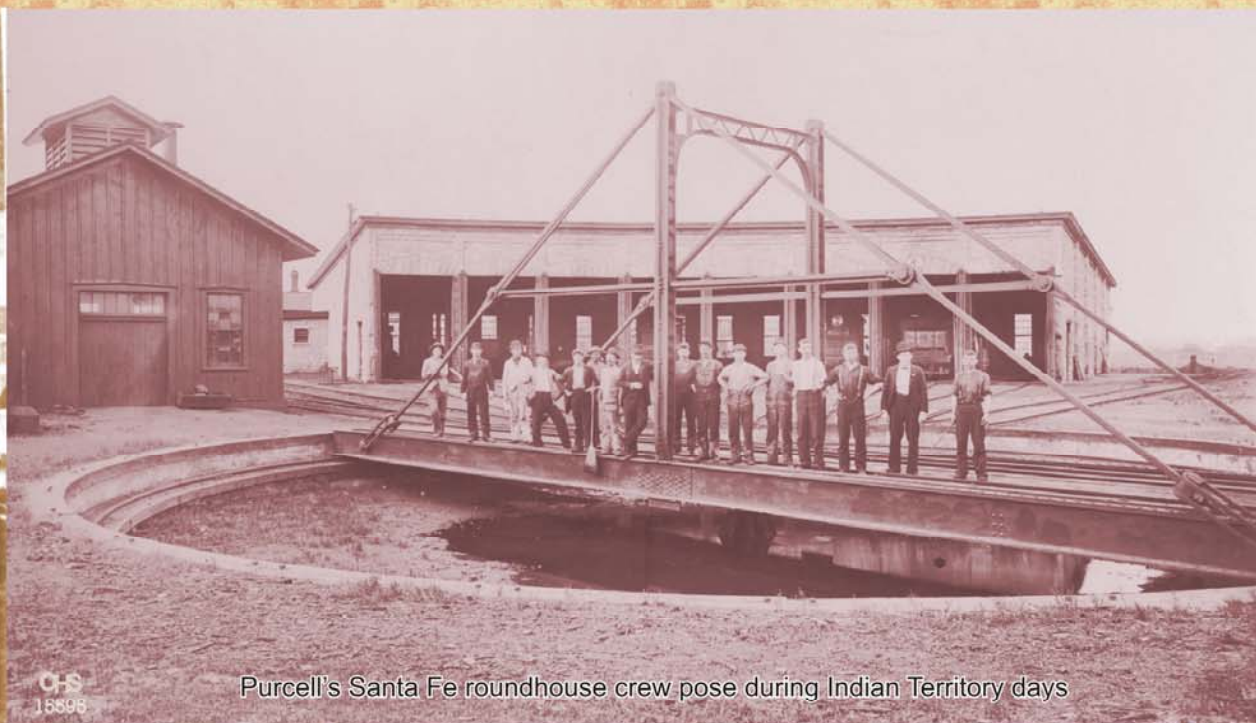
First Locomotive into Oklahoma - MKT Engine No. 14 "Pittsburg" 4-4-0 Built in 1870



Frisco's old Freight Depot now Oklahoma Music Hall of Fame in Muskogee



MKT Ticket Office - Porter, OK



Purcell's Santa Fe roundhouse crew pose during Indian Territory days



Wayneoka's Depot & Harvey House was a n overnight stop on Santa Fe's Chicago to LA circuit



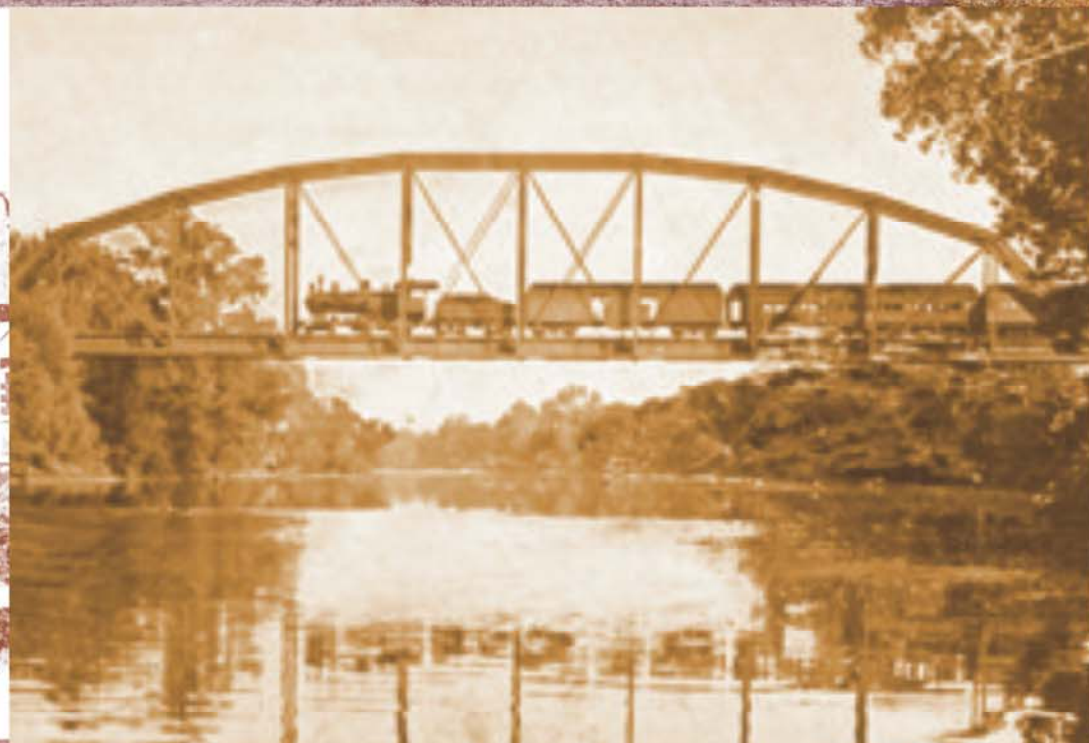
Caddo's - Former MKT Mission Style Depot



Tulsa's depot in 1906 was a bustling location soon after the bridge was built across the Arkansas River



Oklahoma Railway Company - 1903-1947 - Electric Interurban service



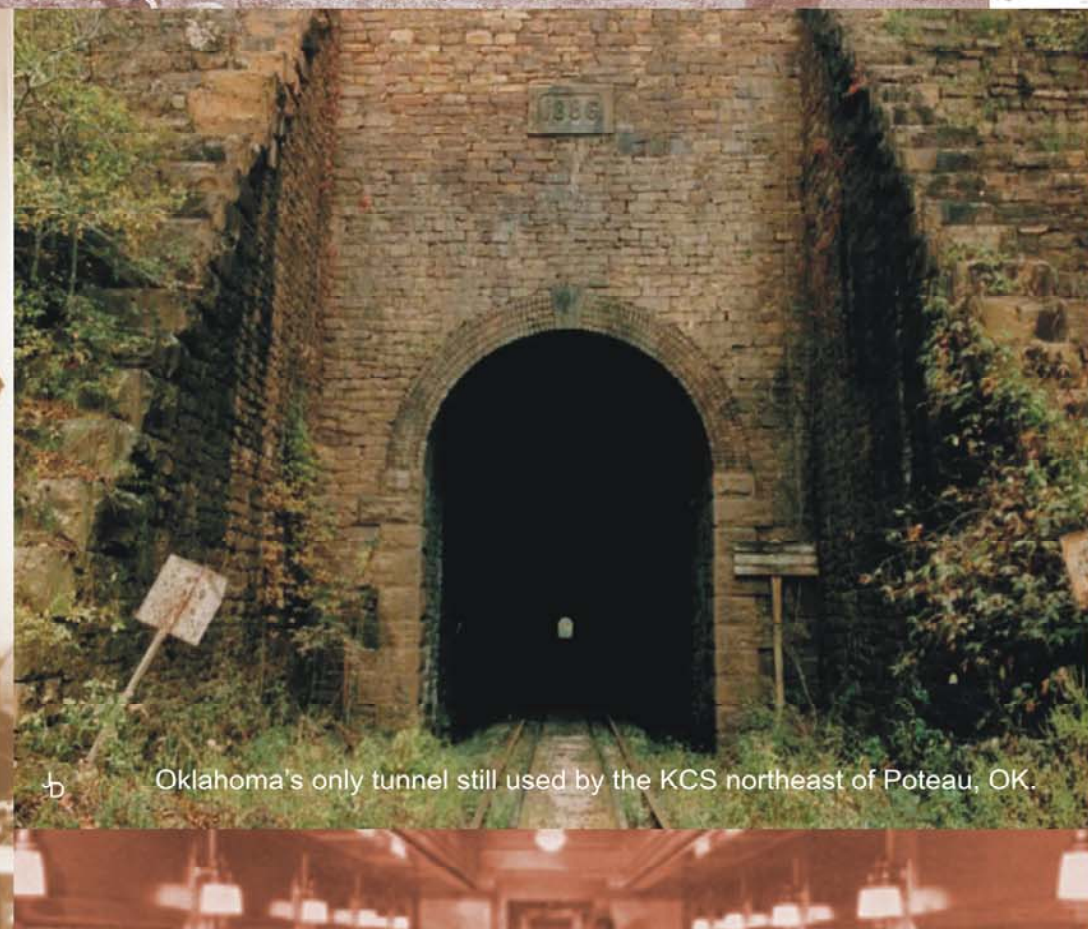
Neosho River bridge near Miami, Oklahoma - 1918



Downtown Oklahoma City - 1907 - Original Santa Fe Depot



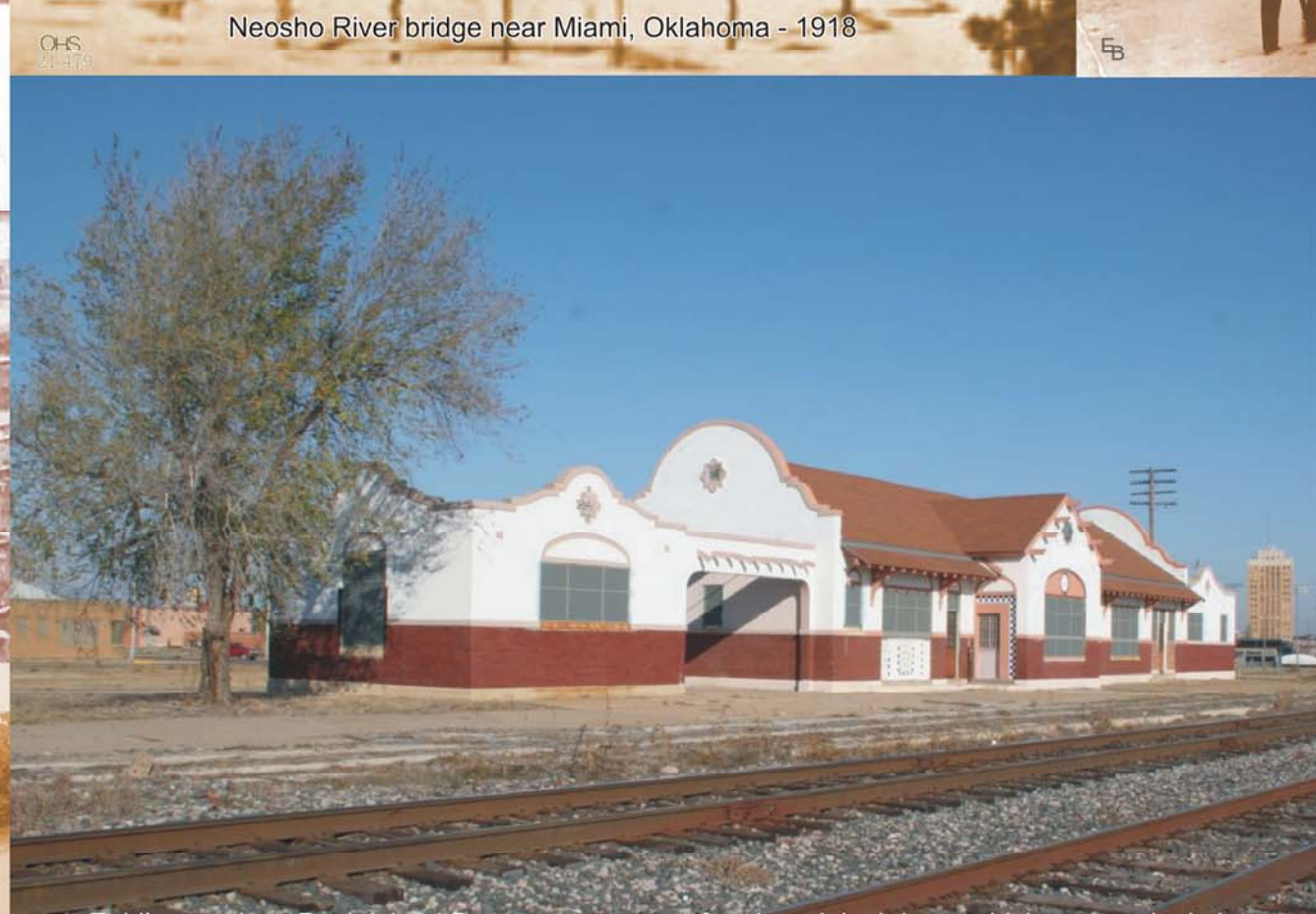
Cars with stonework along rail spur built during the construction of the State Capitol 1915-1916



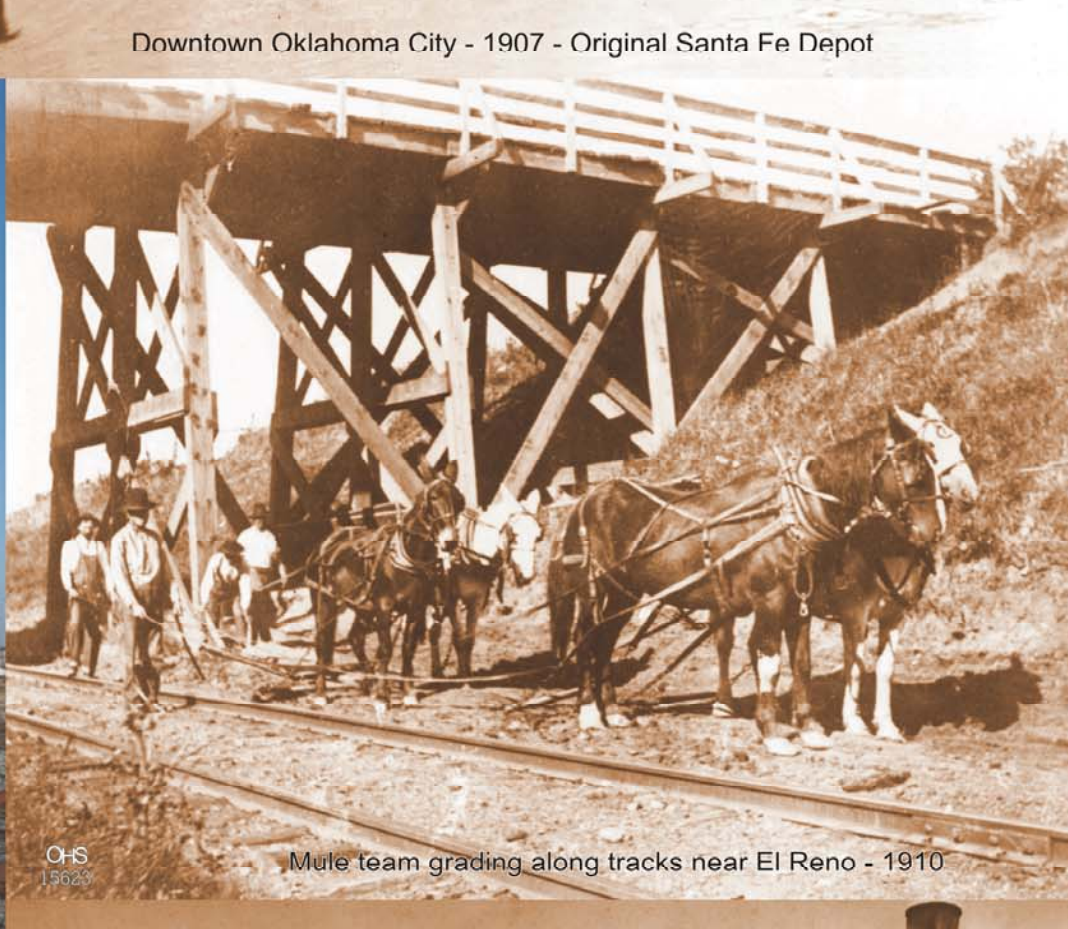
Oklahoma's only tunnel still used by the KCS northeast of Poteau, OK



Stillwater grew into a major university town because of tracks laid in 1900



Enid's spacious Rock Island Depot came years after the original depot which was a single boxcar



Mule team grading along tracks near El Reno - 1910



New tracks going down in Bartlesville on 3rd Street in 1908



MKT Dining Car around 1925



1901 Washita River Flood near Anadarko



First Passenger Train over Wichita Falls Railroad in Woodward 1912



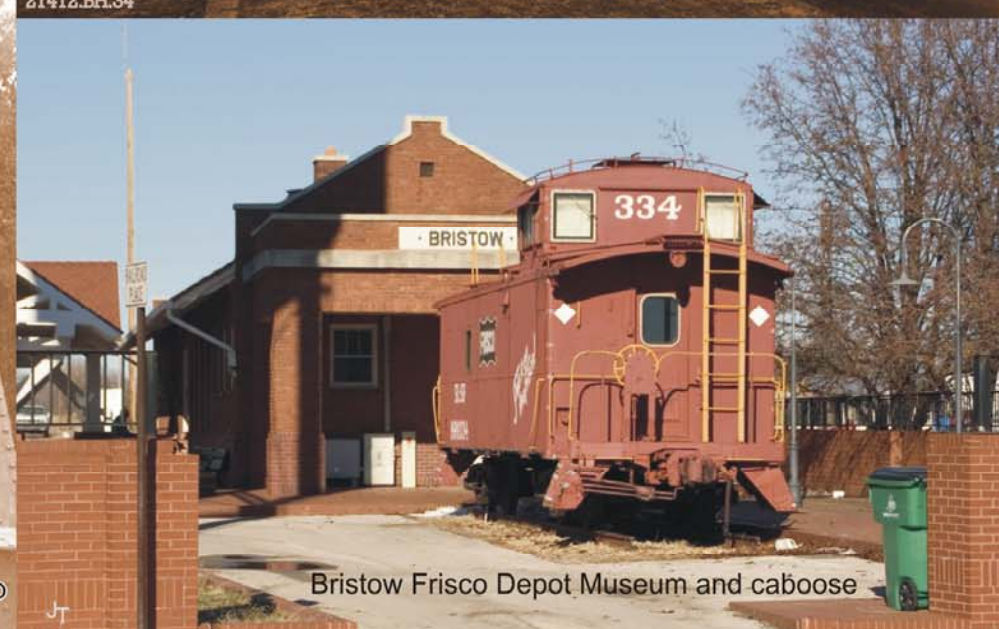
Norman's Interurban system was part of OKC's expanded network in first half of the century.



Workers on Pennington Creek Bridge near Tishomingo



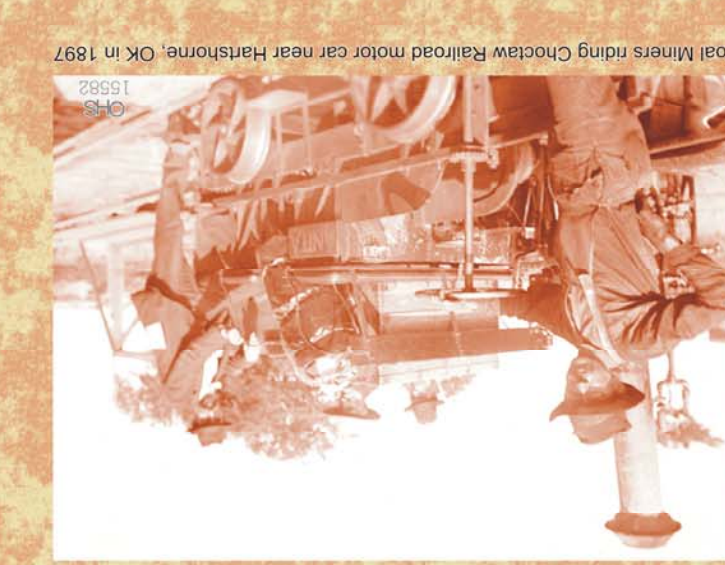
Train stops in early day Mangum Depot



Bristow Frisco Depot Museum and caboose

FOR FREE DISTRIBUTION OKLAHOMA DEPARTMENT OF TRANSPORTATION Prepared by John Dougherty, Assistant Manager Joe R. Kyle, Manager Rail Programs Division Gary M. Ridley, Director Oklahoma Department of Transportation Secretary of Transportation - Phil Tomkinson Governor - Brad Henry

The Oklahoma Department of Transportation's Rail Program Division is a national leader in strategic rail rehabilitation and modernization of routes and short line operators promoting prosperity throughout Oklahoma. The Oklahoma Department of Transportation's Rail Program Division is a national leader in strategic rail rehabilitation and modernization of routes and short line operators promoting prosperity throughout Oklahoma. The Oklahoma Department of Transportation's Rail Program Division is a national leader in strategic rail rehabilitation and modernization of routes and short line operators promoting prosperity throughout Oklahoma.



Coal miners riding Choctaw Railroad motor car near Harsham, OK in 1897

OKLAHOMA Centennial Railroad Map 1907 - 2007 100 Years of Statehood