

Copies of this map are available for public use at a nominal cost. Address: Oklahoma Department of Transportation, 200 N.E. 24th Street, Oklahoma City, Oklahoma 73105-3204. Printing Services Phone: (405) 521-2456.

This map indicates those roads known to the Department to be open to public travel. Placement of a road on the map has no relationship to maintenance responsibility by any level of government.

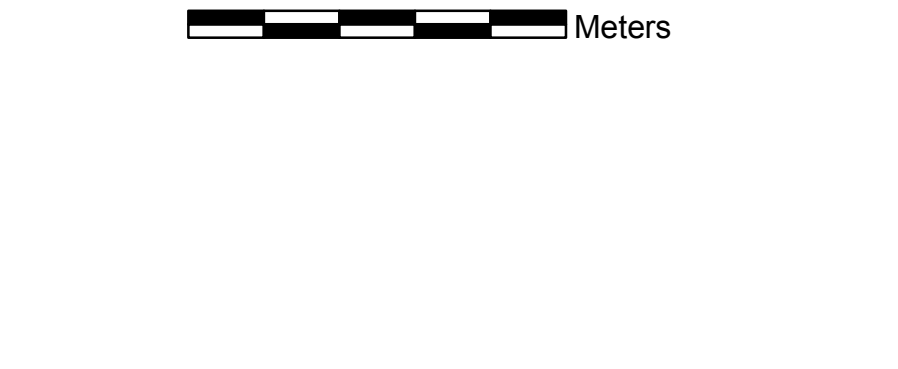
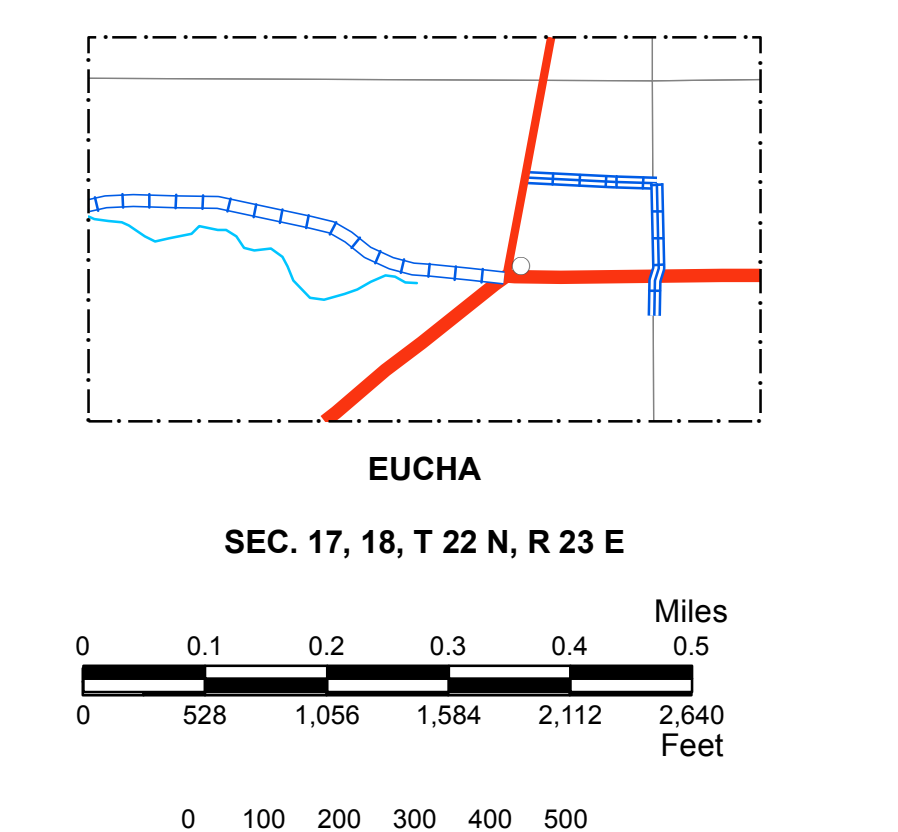
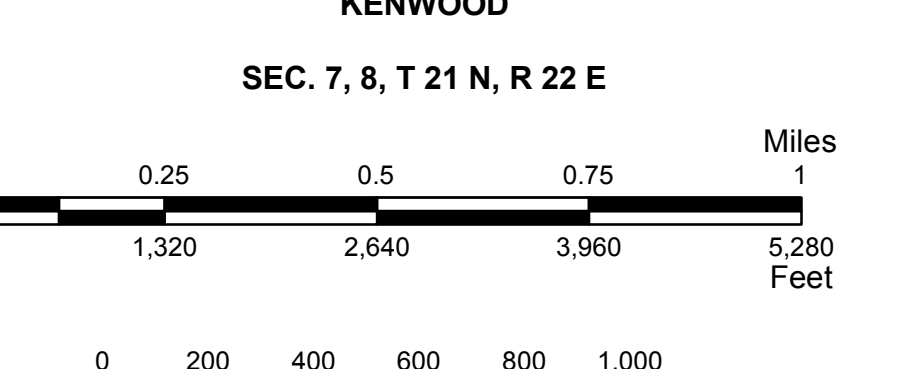
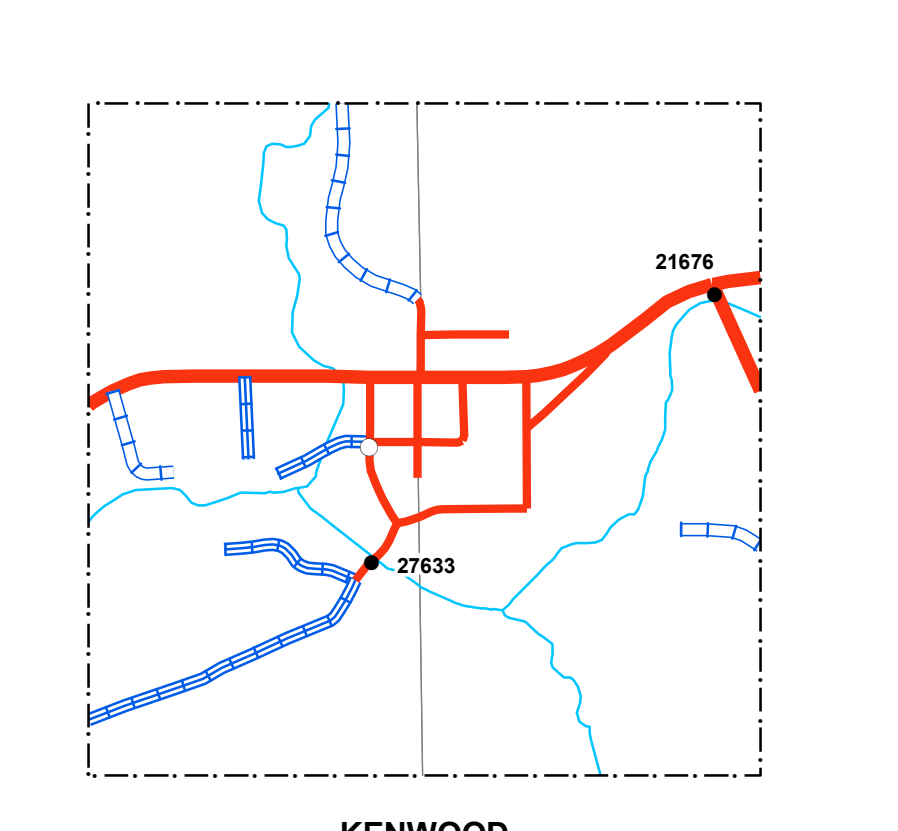
© Copyright 2018  
PRINTED ON STABLE PAPER

**NOT FOR RESALE**

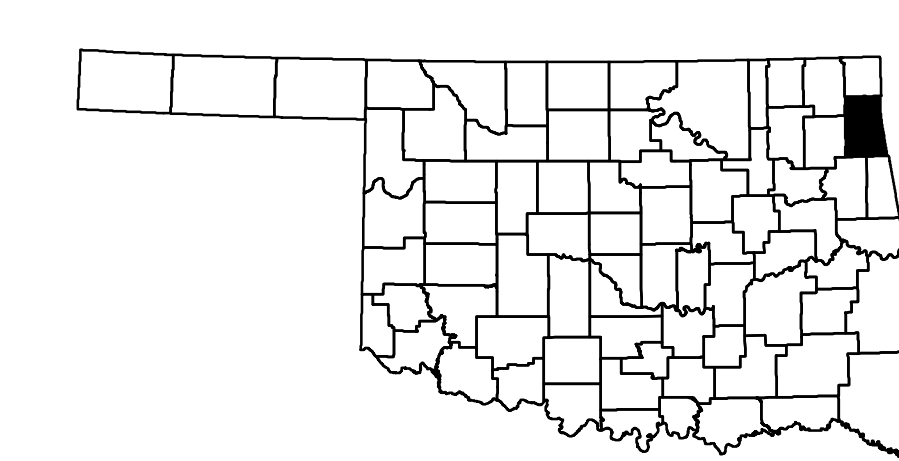
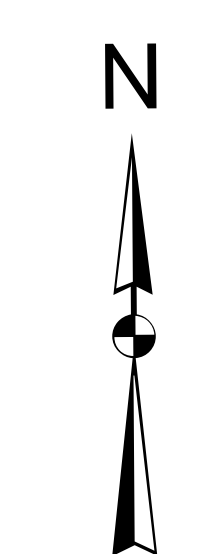
ALL RIGHTS RESERVED  
GENERAL HIGHWAY MAP

DELAWARE COUNTY  
OKLAHOMA

COMPUTER GENERATED  
21



- Legend**
- Interstate Highway
  - US Highway
  - State Highway
  - Divided Highway - Asphalt
  - Divided Highway - Concrete
  - Asphalt
  - Concrete
  - Gravel
  - Grade & Drain
  - Unimproved
  - Railroad
  - River or Stream
  - State Line
  - County Line
  - Section Line
  - Corporate Limit
  - Wildlife Management Area
  - Wildlife Refuge
  - Lake or Reservoir
  - Bridges
  - Low Water Crossing
  - Natural Elevation Point
  - Natural Elevation Point



**GENERAL HIGHWAY MAP  
DELAWARE COUNTY  
OKLAHOMA**

PREPARED BY THE  
OKLAHOMA DEPARTMENT OF TRANSPORTATION  
STRATEGIC ASSET AND PERFORMANCE  
MANAGEMENT DIVISION

IN COOPERATION WITH THE  
U.S. DEPARTMENT OF TRANSPORTATION  
FEDERAL HIGHWAY ADMINISTRATION

SCALE IN MILES  
0 1 2 3 4 5 Miles

SCALE IN KILOMETERS  
0 1 2 3 4 5 Kilometers

LAMBERT CONFORMAL CONIC PROJECTION U.S. & GEODETIC SURVEY DATA  
20,000 FOOT GRID; OKLAHOMA PLANE COORDINATE SYSTEM NORTH PROJECTION ZONE  
POPULATION FIGURES BASED ON 2010 U.S. CENSUS  
CD: POP-41-087

ALL DATA CURRENT AS OF DATE LISTED BELOW  
October 2, 2018