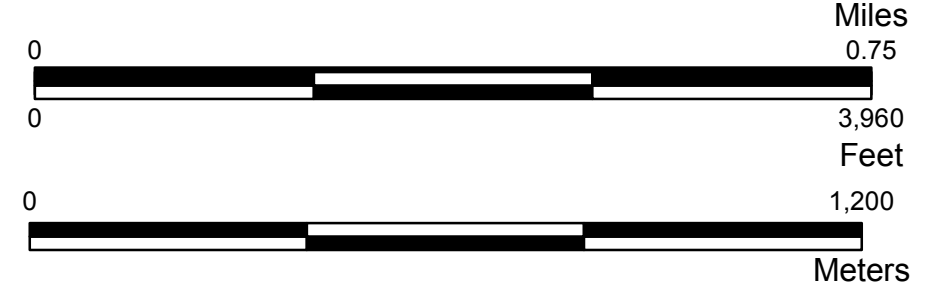
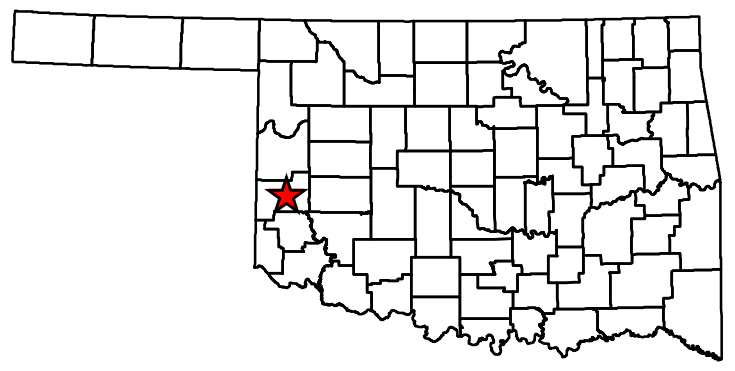
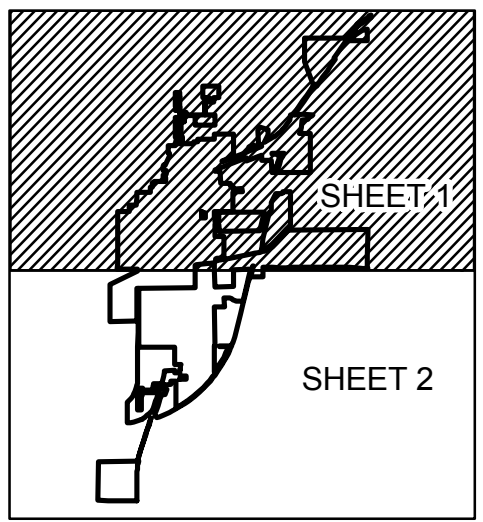


Copies of this map are available for public use at nominal cost.
 Address:
 OKLAHOMA DEPARTMENT OF TRANSPORTATION
 PRINTING SERVICES Phone (405) 521-2586
 200 N.E. 21st STREET
 OKLAHOMA CITY, OKLAHOMA 73105-3204

This map indicates those roads known to the Department to be open to public travel. Placement of a road on the map has no relationship to maintenance responsibility by any level of government.



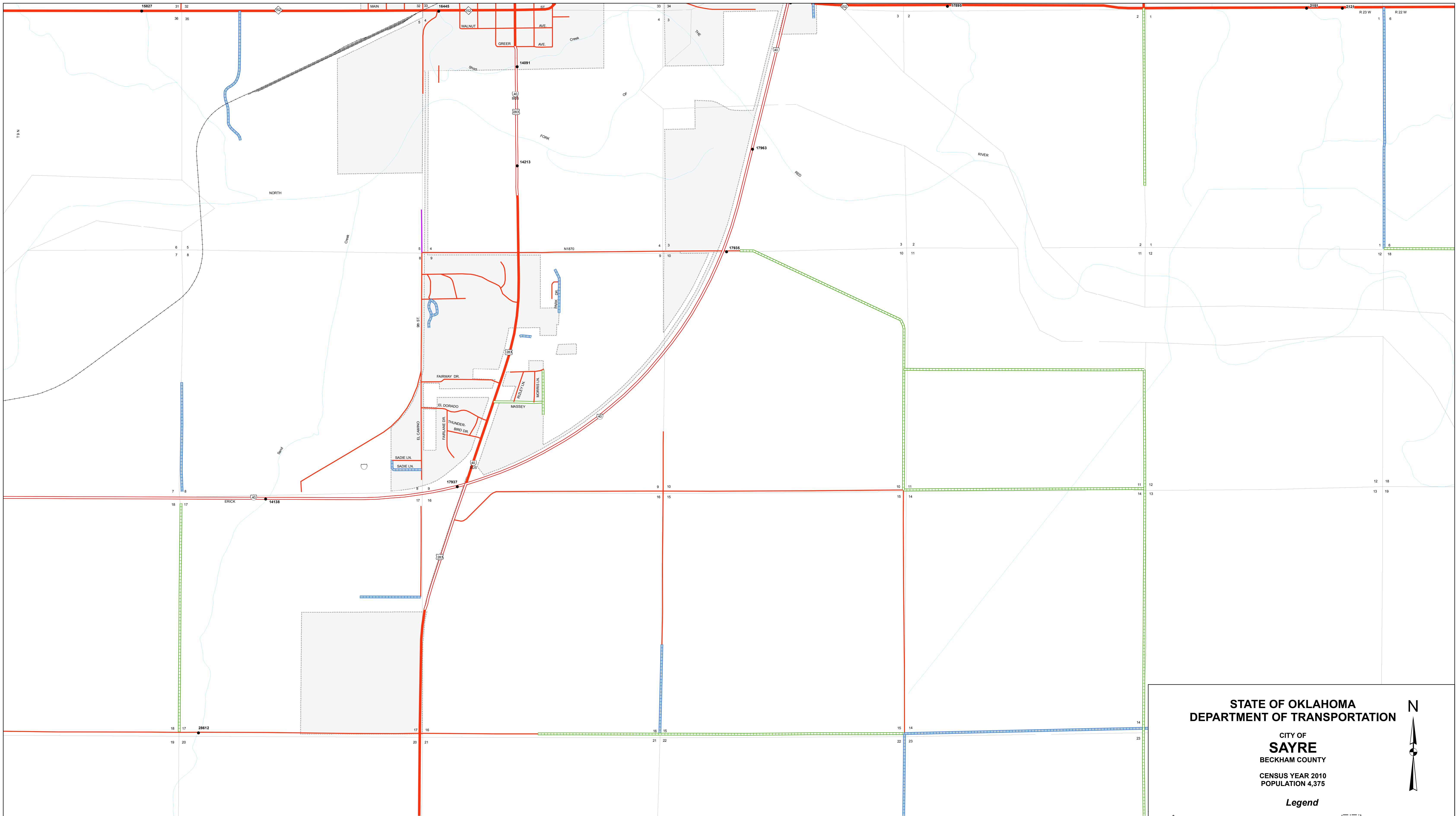
**STATE OF OKLAHOMA
DEPARTMENT OF TRANSPORTATION**

**CITY OF
SAYRE
BECKHAM COUNTY**

CENSUS YEAR 2010
POPULATION 4,375

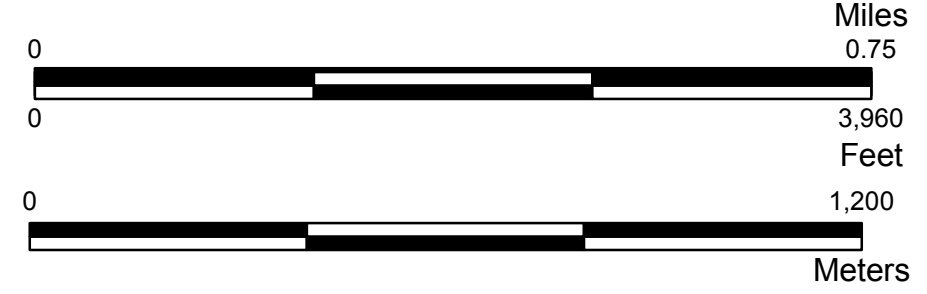
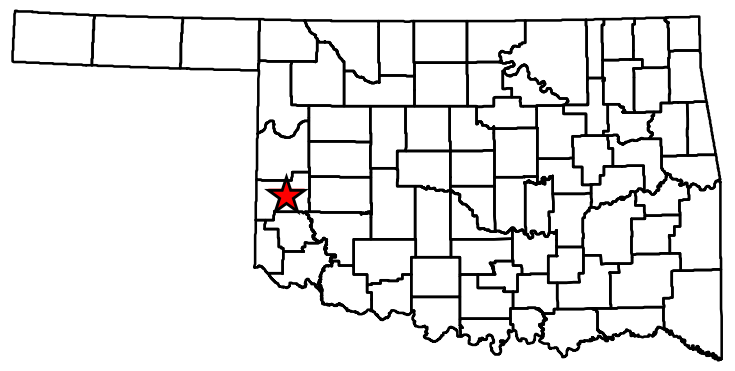
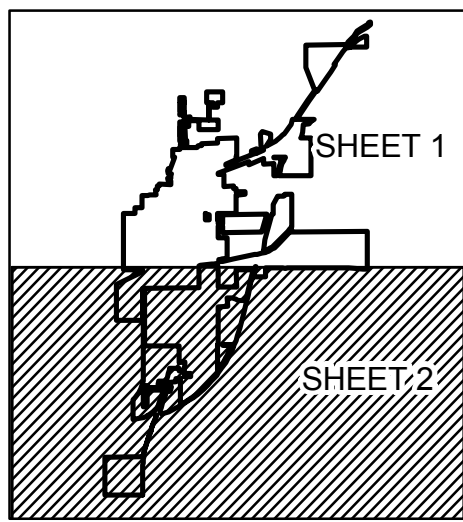
Legend

State Highway	Road Surface Type	County Line
U.S. Highway	Asphalt	Section Line
Interstate	Concrete	Wildlife Management Area
Divided Highway, 4 or more lanes	Gravel	Wildlife Refuge
Asphalt	Grade & Drain	River or Stream
Concrete	Unimproved	Lake or Reservoir
	Railroad	Bridges
	Corporate Limit	Low Water Crossing
	Sayre	



Copies of this map are available for public use at nominal cost.
 Address:
 OKLAHOMA DEPARTMENT OF TRANSPORTATION
 PRINTING SERVICES Phone (405) 521-2586
 200 N.E. 21st STREET
 OKLAHOMA CITY, OKLAHOMA 73105-3204

This map indicates those roads known to the Department to be open to public travel. Placement of a road on the map has no relationship to maintenance responsibility by any level of government.



STATE OF OKLAHOMA
DEPARTMENT OF TRANSPORTATION

CITY OF SAYRE
 BECKHAM COUNTY
 CENSUS YEAR 2010
 POPULATION 4,375

N

Legend

State Highway	Road Surface Type	County Line
U.S. Highway	Asphalt	Section Line
Interstate	Concrete	Wildlife Management Area
Divided Highway, 4 or more lanes	Gravel	Wildlife Refuge
Asphalt	Grade & Drain	River or Stream
Concrete	Unimproved	Lake or Reservoir
	Railroad	Bridges
	Corporate Limit	Low Water Crossing
	Sayre	