

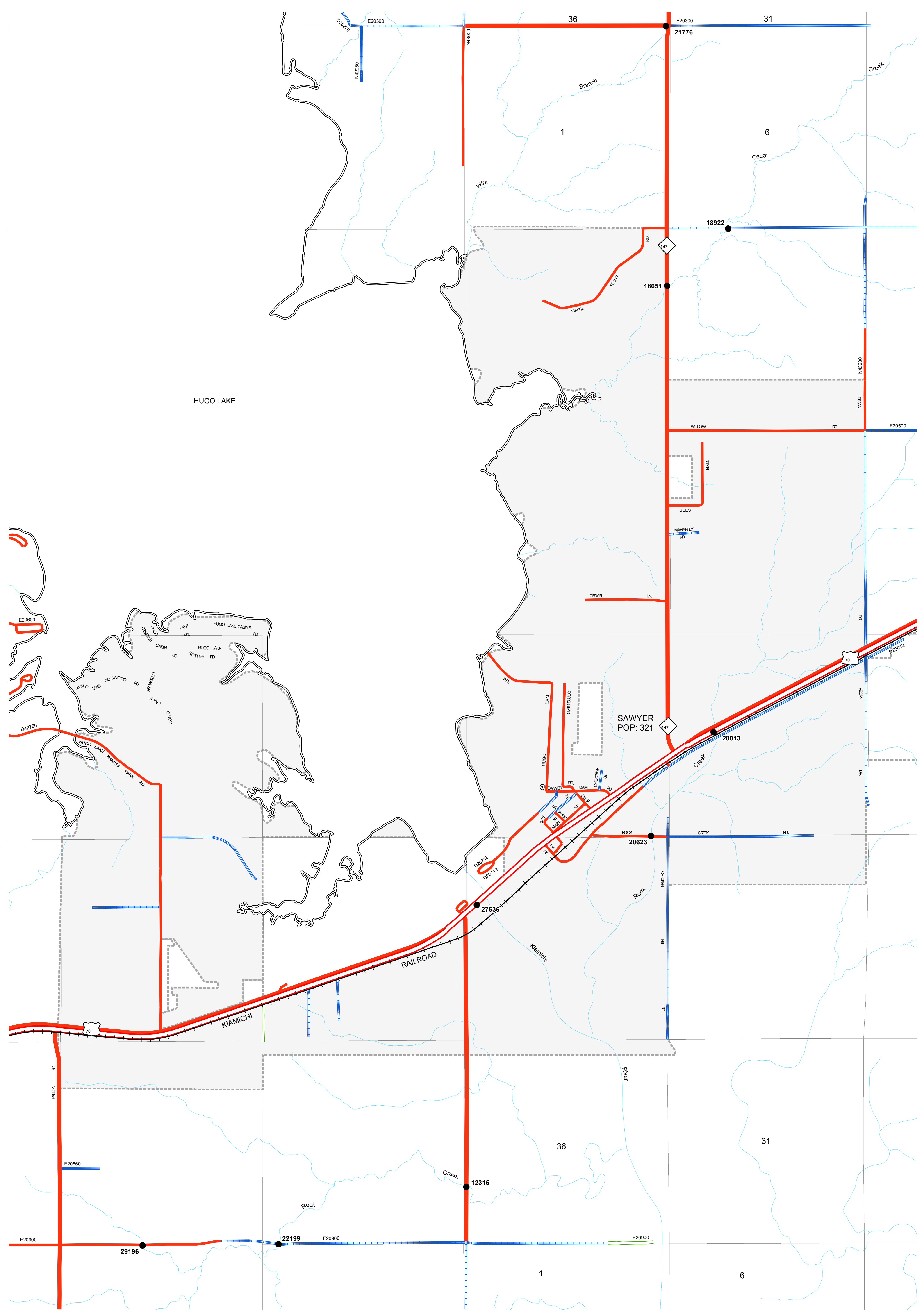
Copies of this map are available for public use at nominal cost.  
 OKLAHOMA DEPARTMENT OF TRANSPORTATION  
 PRINTING SERVICES Phone (405) 521-2586  
 200 N.E. 21st STREET  
 OKLAHOMA CITY, OKLAHOMA 73105-3204

This map indicates those roads known to the Department to be open to public travel. Placement of a road on the map has no relationship to maintenance responsibility by any level of government.

© COPYRIGHT 2018  
 PRINTED AT STATE EXPENSE

**NOT FOR RESALE**

ALL RIGHTS RESERVED  
 COMPUTER GENERATED  
 SAWYER, CHOCTAW COUNTY  
 September, 2018



**Legend**

	Interstate		Corporate Limit		Bridges
	State		SAWYER		Low Water Crossing
	US		County Line		River or Stream
	Railroad		Section Line		Lake or Reservoir
	Divided Highway, 4 or more lanes		Wildlife Management Area		
	Asphalt		Wildlife Refuge		
	Concrete				
	Gravel				
	Grade & Drain				
	Unimproved				

**STATE OF OKLAHOMA**  
**DEPARTMENT OF TRANSPORTATION**

CITY OF  
**SAWYER**  
 CHOCTAW COUNTY

CENSUS YEAR 2010  
 POPULATION 321

0 1/4 1/2 1 1 1/2 Miles  
 0 1,320 2,640 5,280 7,920 Feet  
 0 200 400 600 800 1,000 2,000 Meters