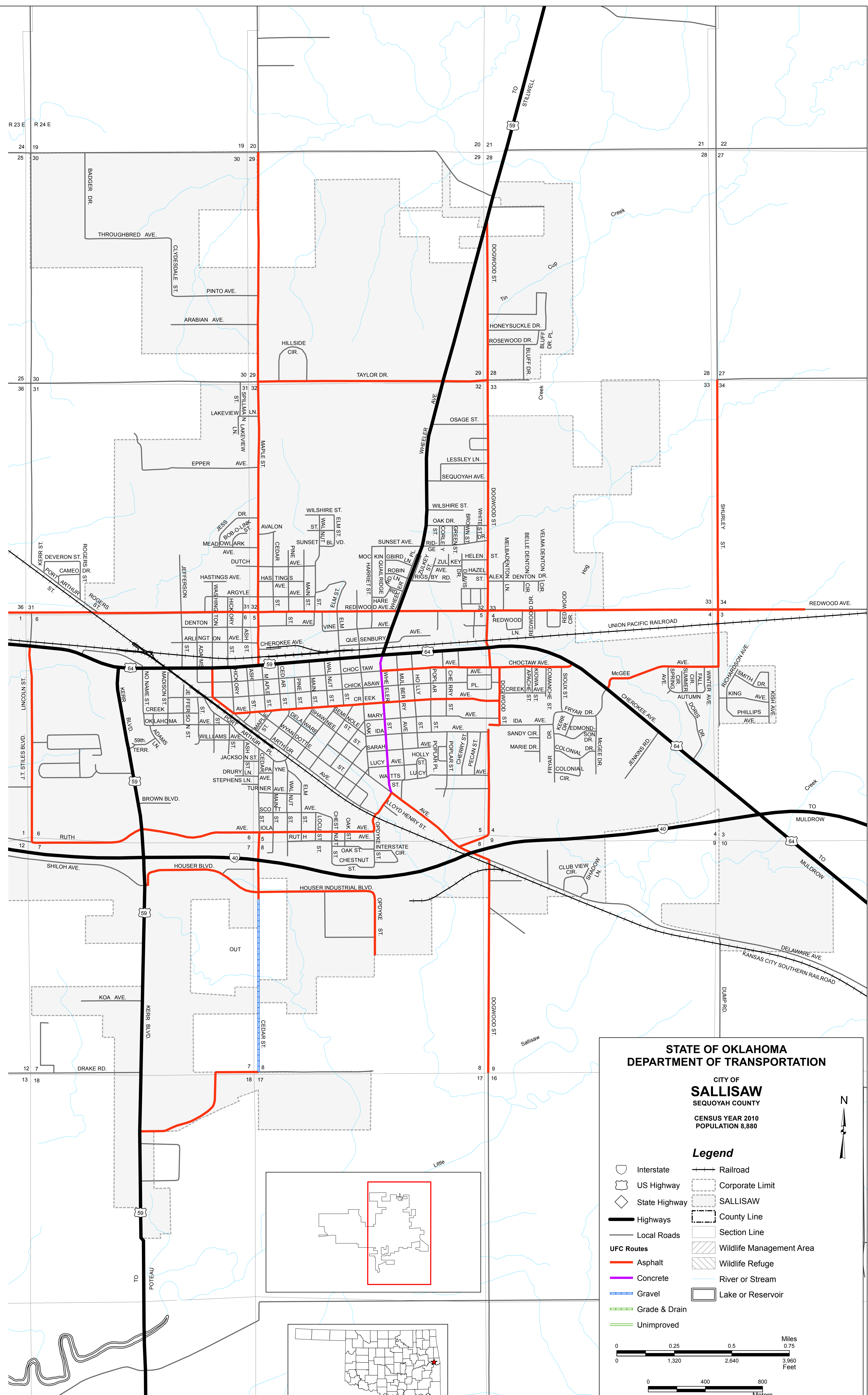


Copies of this map are available for public use at nominal cost.
OKLAHOMA DEPARTMENT OF TRANSPORTATION
PRINTING SERVICES Phone (405) 521-2586
200 N.E. 21st STREET
OKLAHOMA CITY, OKLAHOMA 73105-3204

This map indicates those roads known to the Department to be open to public travel. Placement of a road on the map has no relationship to maintenance responsibility by any level of government.

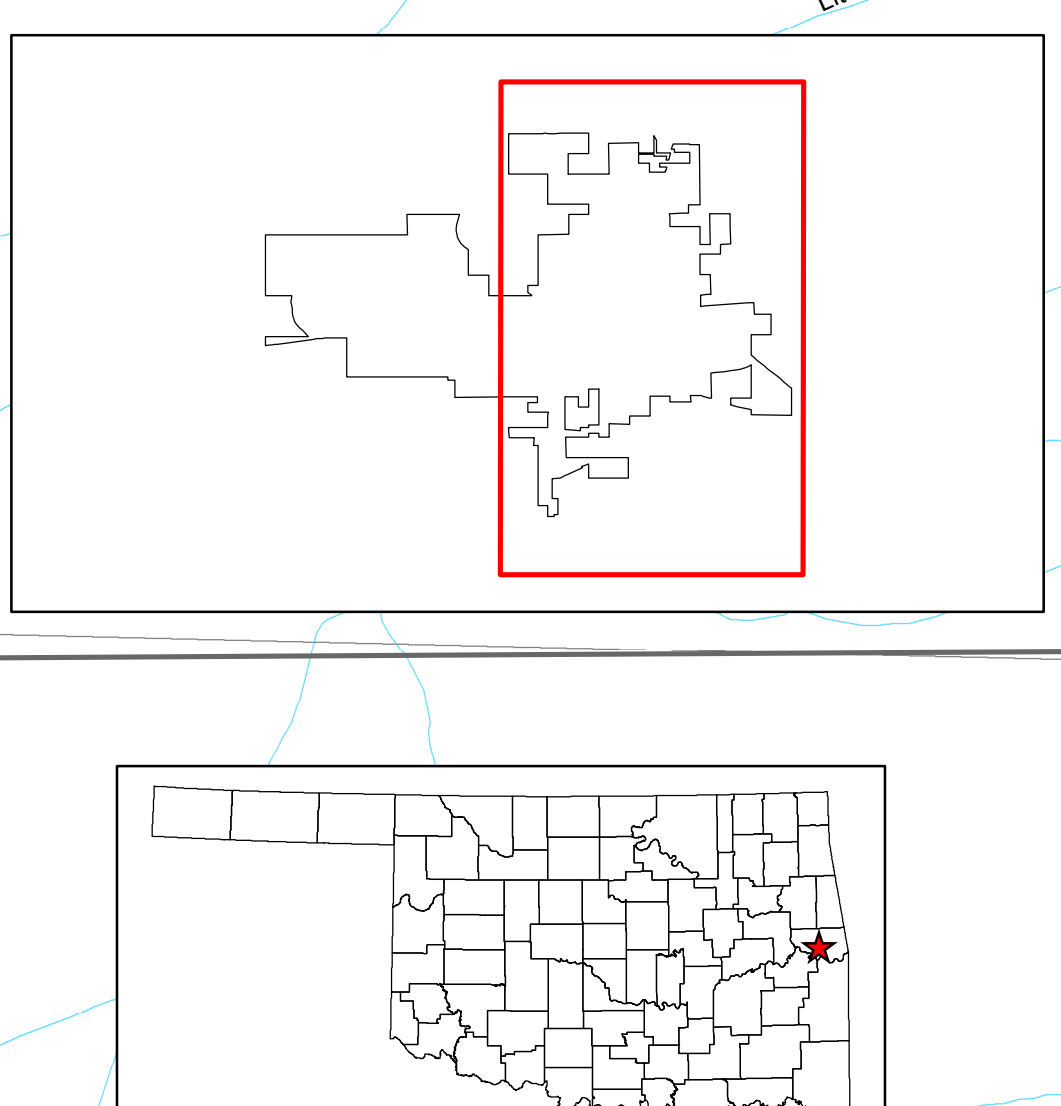
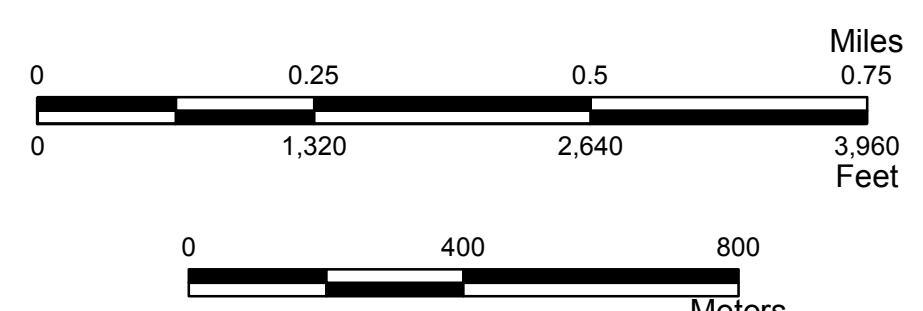


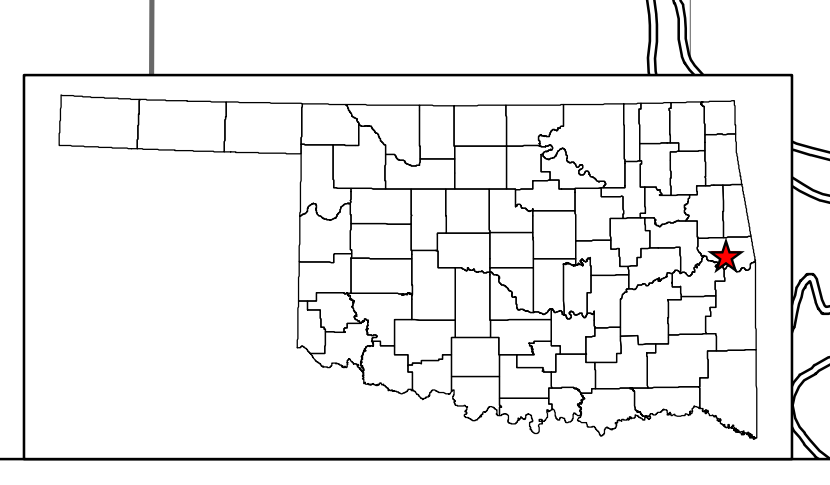
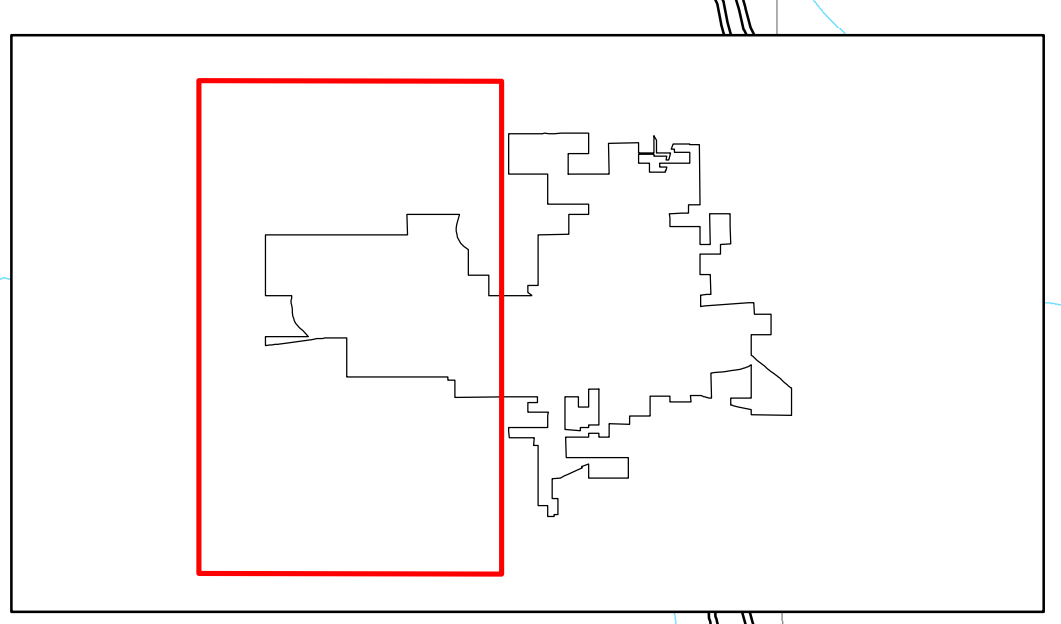
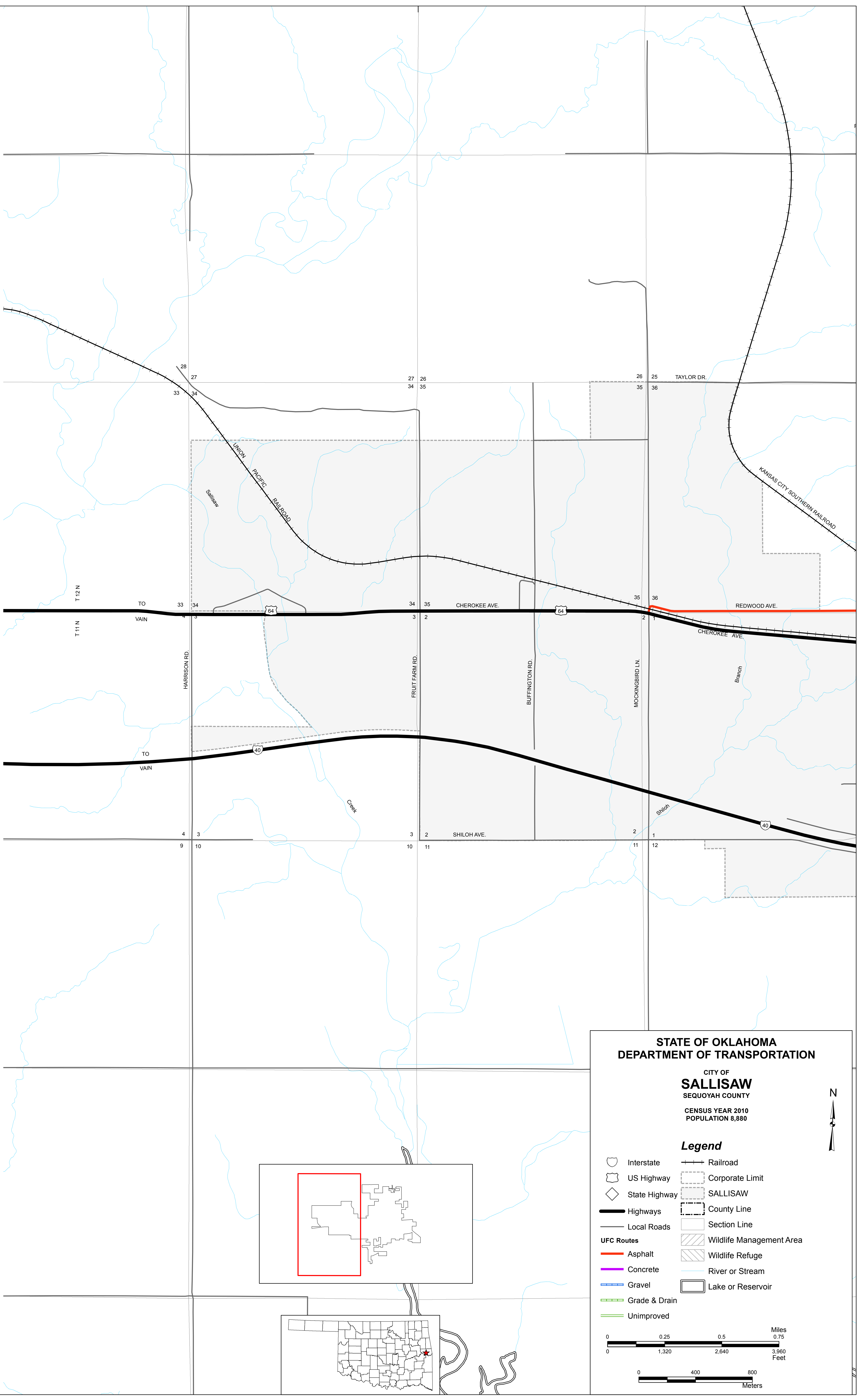
STATE OF OKLAHOMA
DEPARTMENT OF TRANSPORTATION

CITY OF
SALLISAW
SEQUOYAH COUNTY
CENSUS YEAR 2010
POPULATION 8,880

Legend

- Interstate
- US Highway
- State Highway
- Highways
- Local Roads
- Asphalt
- Concrete
- Gravel
- Grade & Drain
- Unimproved
- Railroad
- Corporate Limit
- SALLISAW
- County Line
- Section Line
- Wildlife Management Area
- Wildlife Refuge
- River or Stream
- Lake or Reservoir





STATE OF OKLAHOMA
DEPARTMENT OF TRANSPORTATION

CITY OF
SALLISAW
SEQUOYAH COUNTY

CENSUS YEAR 2010
POPULATION 8,880

Legend

- Interstate
- US Highway
- State Highway
- Highways
- Local Roads
- Asphalt
- Concrete
- Gravel
- Grade & Drain
- Unimproved
- Railroad
- Corporate Limit
- SALLISAW
- County Line
- Section Line
- Wildlife Management Area
- Wildlife Refuge
- River or Stream
- Lake or Reservoir

