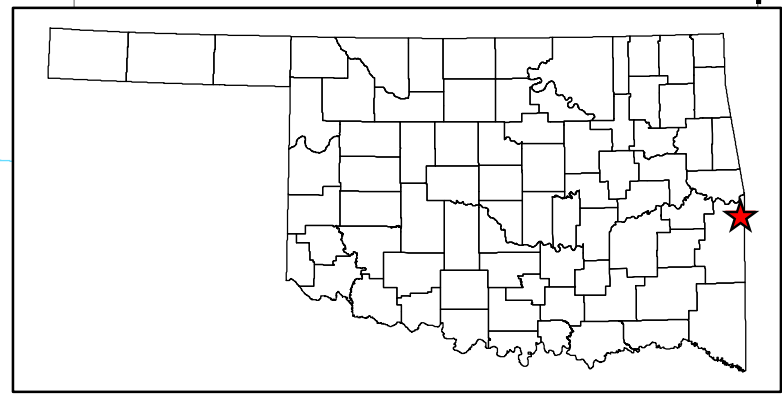
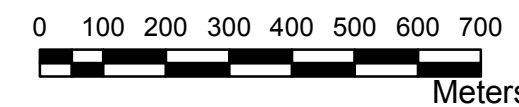
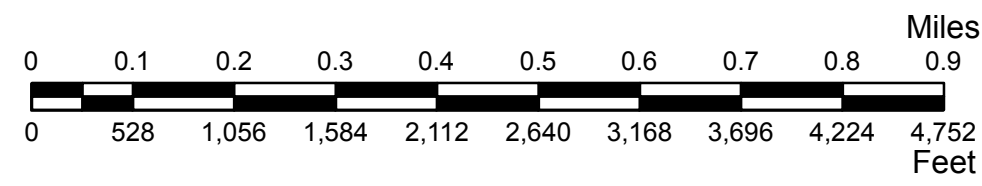


Copies of this map are available for public use at nominal cost.
 Address:
 OKLAHOMA DEPARTMENT OF TRANSPORTATION
 PRINTING SERVICES Phone (405) 521-2586
 200 N.E. 21st STREET
 OKLAHOMA CITY, OKLAHOMA 73105-3204

This map indicates those roads known to the Department to be open to public travel. Placement of a road on the map has no relationship to maintenance responsibility by any level of government.



**STATE OF OKLAHOMA
DEPARTMENT OF TRANSPORTATION**

CITY OF
ROCK ISLAND
Le FLORE COUNTY

CENSUS YEAR 2010
POPULATION 646

Legend

Interstate	Railroad
US Highway	County Line
State Highway	Section Line
Divided Highway, 4 or more lanes	Corporate Limit
Asphalt	Rock Island
Concrete	Wildlife Management Area
Road Surface Type	Wildlife Refuge
Asphalt	River or Stream
Concrete	Lake or Reservoir
Gravel	Bridges
Grade & Drain	Low Water Crossing
Unimproved	

