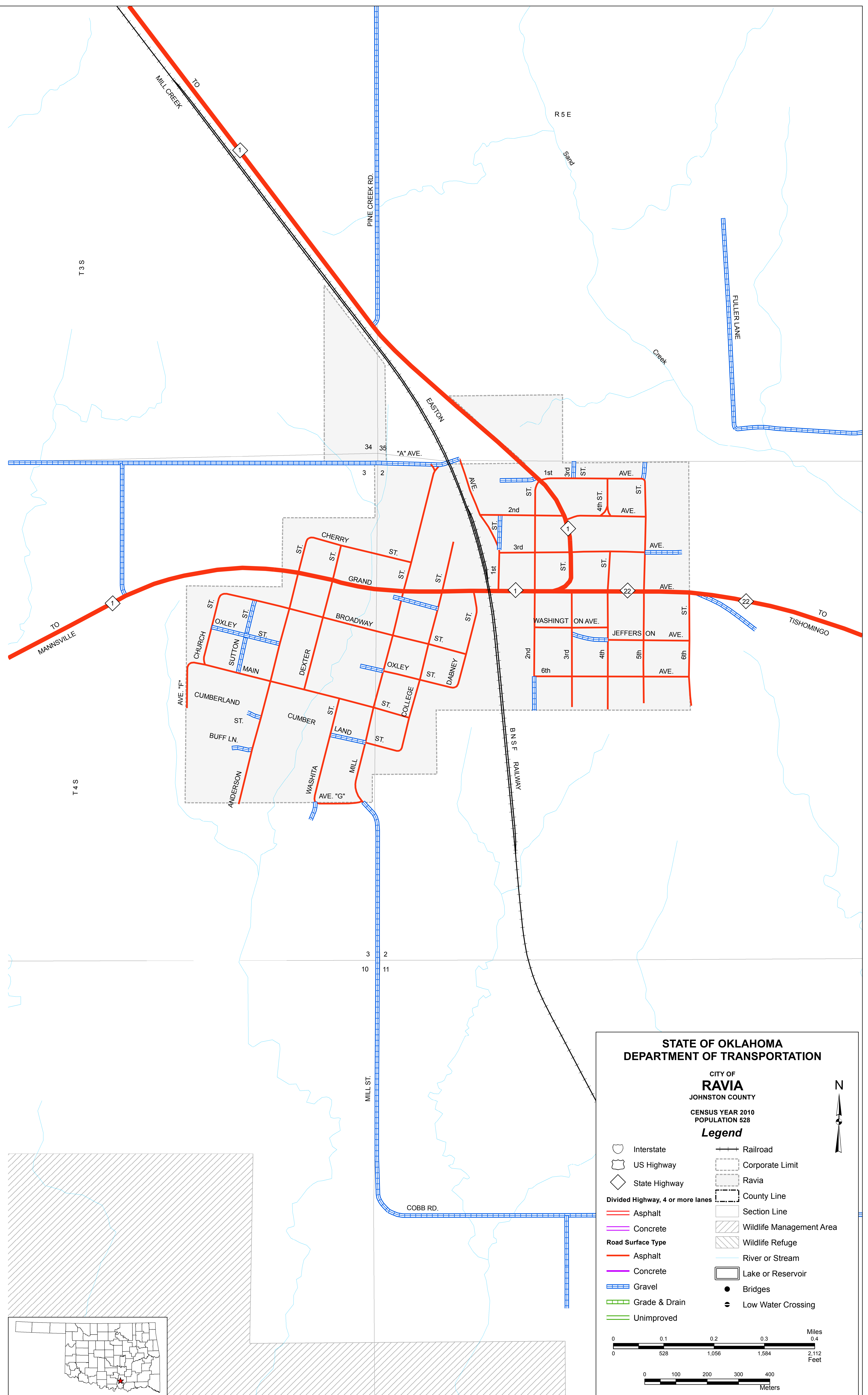


Copies of this map are available for public use at nominal cost.
OKLAHOMA DEPARTMENT OF TRANSPORTATION
PRINTING SERVICES Phone (405) 521-2596
200 N.E. 21st STREET
OKLAHOMA CITY, OKLAHOMA 73105-3204

This map indicates those roads known to the Department to be open to public travel. Placement of a road on the map has no relationship to maintenance responsibility by any level of government.



**STATE OF OKLAHOMA
DEPARTMENT OF TRANSPORTATION**

CITY OF
RAVIA
JOHNSTON COUNTY
CENSUS YEAR 2010
POPULATION 528

Legend

	Interstate		Railroad
	US Highway		Corporate Limit
	State Highway		Ravia
	Divided Highway, 4 or more lanes		County Line
	Asphalt		Section Line
	Concrete		Wildlife Management Area
	Asphalt		Wildlife Refuge
	Concrete		River or Stream
	Gravel		Lake or Reservoir
	Grade & Drain		Bridges
	Unimproved		Low Water Crossing

