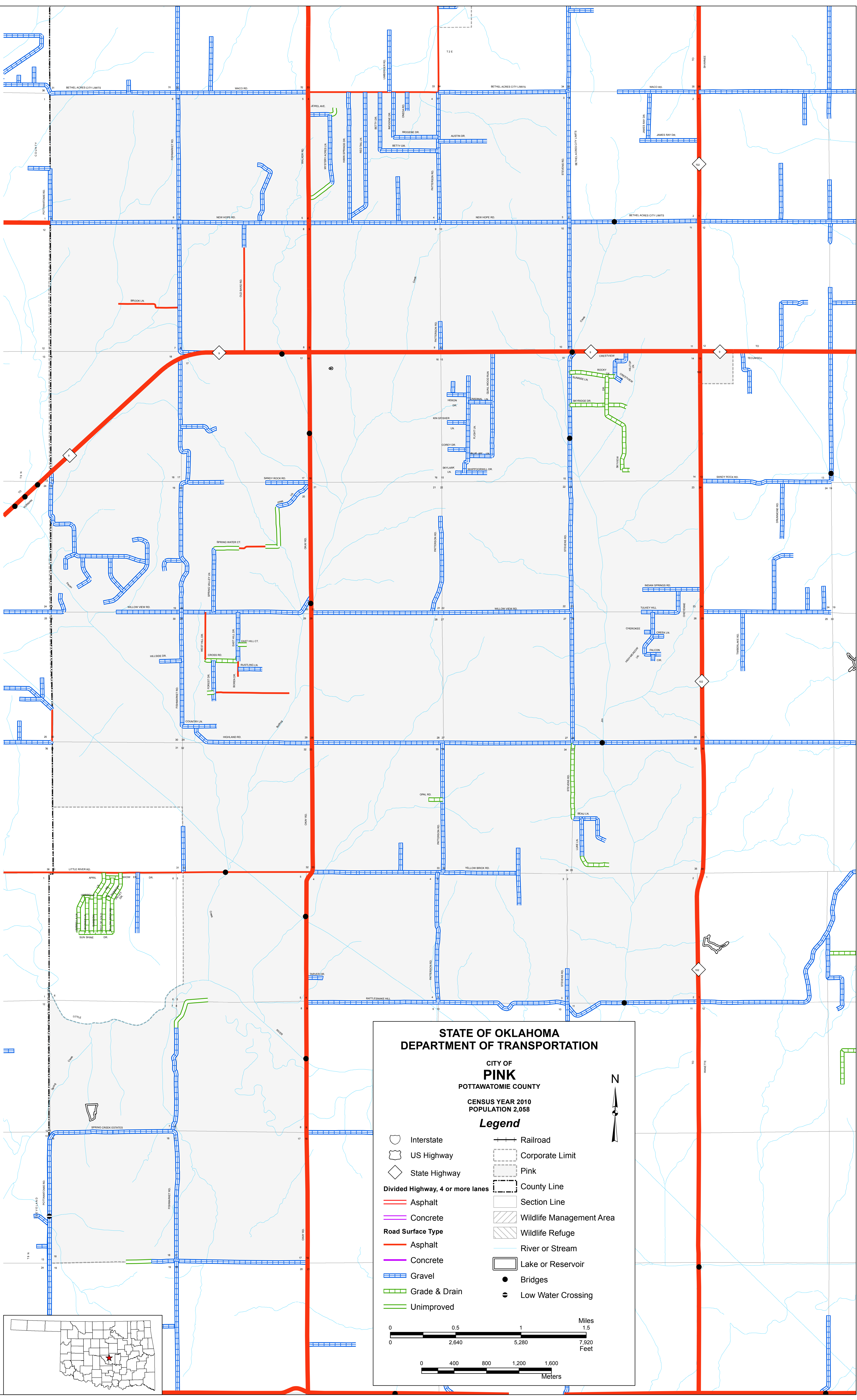


Copies of this map are available for public use at nominal cost.
OKLAHOMA DEPARTMENT OF TRANSPORTATION
PRINTING SERVICES Phone (405) 521-2595
200 N.E. 21st STREET
OKLAHOMA CITY, OKLAHOMA 73105-3204

This map indicates those roads known to the Department to be open to public travel. Placement of a road on the map has no relationship to maintenance responsibility by any level of government.



**STATE OF OKLAHOMA
DEPARTMENT OF TRANSPORTATION**

**CITY OF
PINK**
POTTAWATOMIE COUNTY

CENSUS YEAR 2010
POPULATION 2,058

Legend

Interstate	Railroad
US Highway	Corporate Limit
State Highway	Pink
Divided Highway, 4 or more lanes	County Line
Asphalt	Section Line
Concrete	Wildlife Management Area
Road Surface Type	Wildlife Refuge
Asphalt	River or Stream
Concrete	Lake or Reservoir
Gravel	Bridges
Grade & Drain	Low Water Crossing
Unimproved	

Miles: 0, 0.5, 1, 1.5
Feet: 0, 2,640, 5,280, 7,920
Meters: 0, 400, 800, 1,200, 1,600

