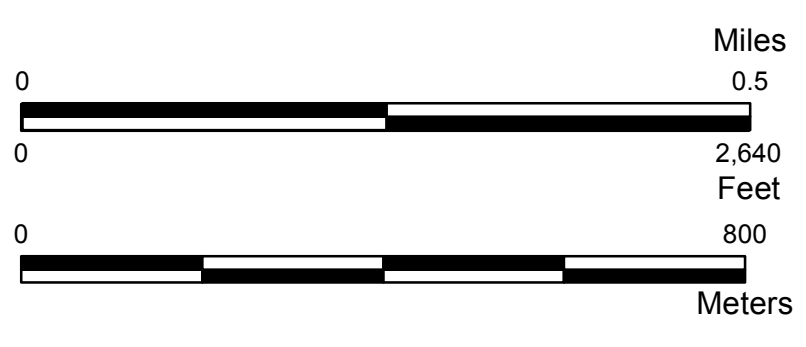
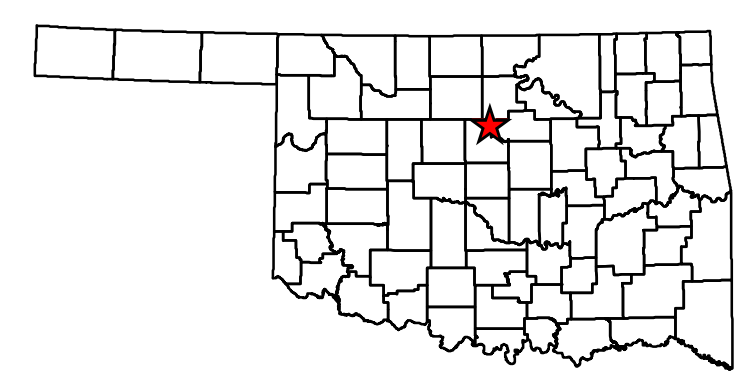
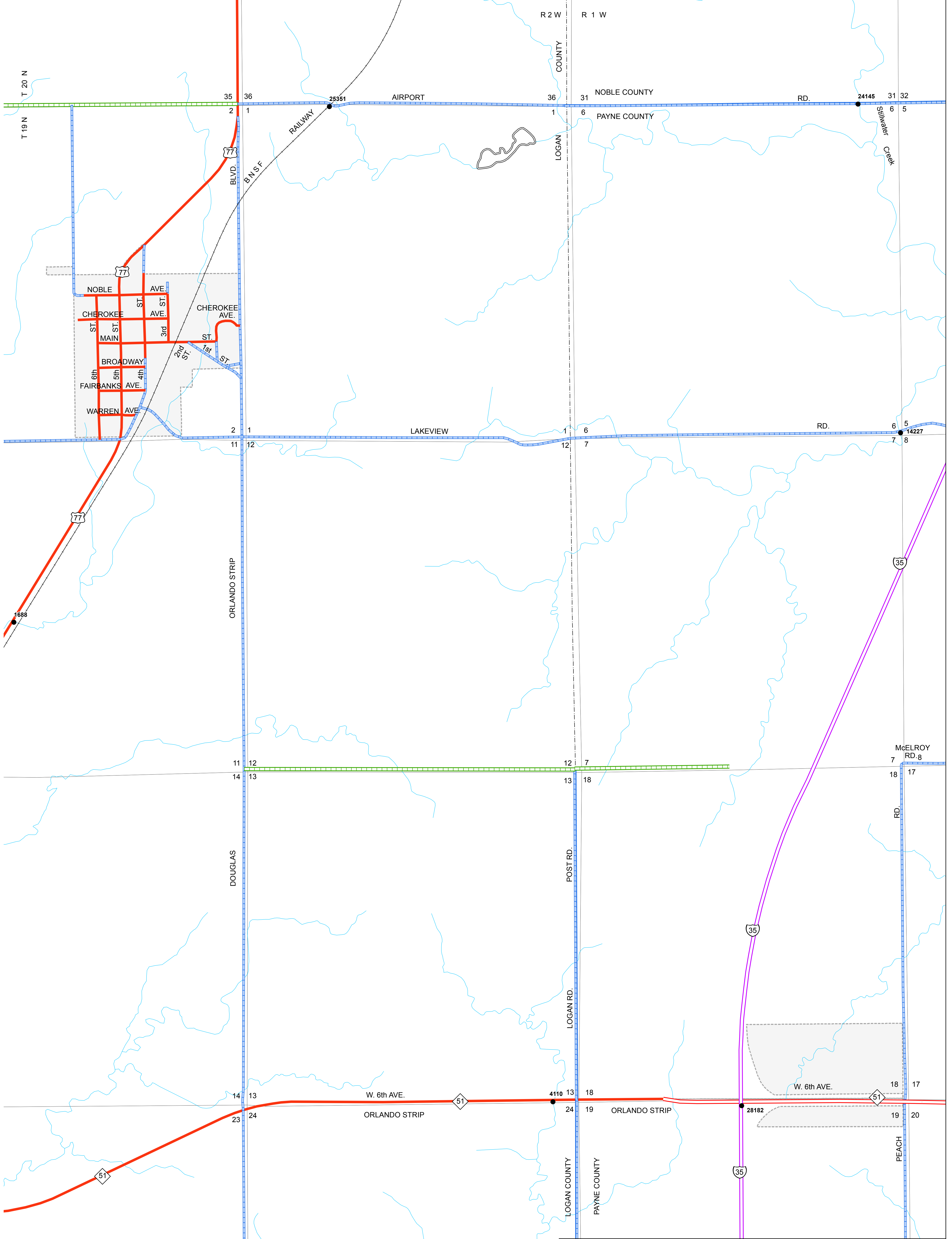


Copies of this map are available for public use at nominal cost.
Address:
OKLAHOMA DEPARTMENT OF TRANSPORTATION
PRINTING SERVICES Phone (405) 521-2586
200 N.E. 21st STREET
OKLAHOMA CITY, OKLAHOMA 73105-3204

This map indicates those roads known to the Department to be open to public travel. Placement of a road on the map has no relationship to maintenance responsibility by any level of government.



STATE OF OKLAHOMA
DEPARTMENT OF TRANSPORTATION

CITY OF
ORLANDO
LOGAN COUNTY

CENSUS YEAR 2010
POPULATION 148

Legend

- | | | |
|----------------------------------|--------------------|--------------------------|
| State Highway | Asphalt | County Line |
| U.S. Highway | Concrete | State Line |
| Interstate | Gravel | Section Line |
| Divided Highway, 4 or more lanes | Grade & Drain | Wildlife Management Area |
| Asphalt | Unimproved | Wildlife Refuge |
| Concrete | Railroad | River or Stream |
| Corporate Limit | Lake or Reservoir | Bridges |
| Orlando | Low Water Crossing | |