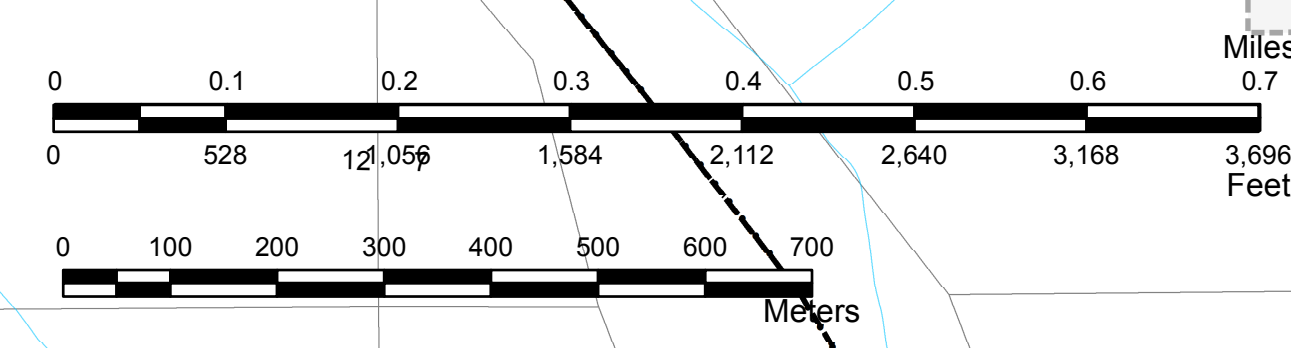
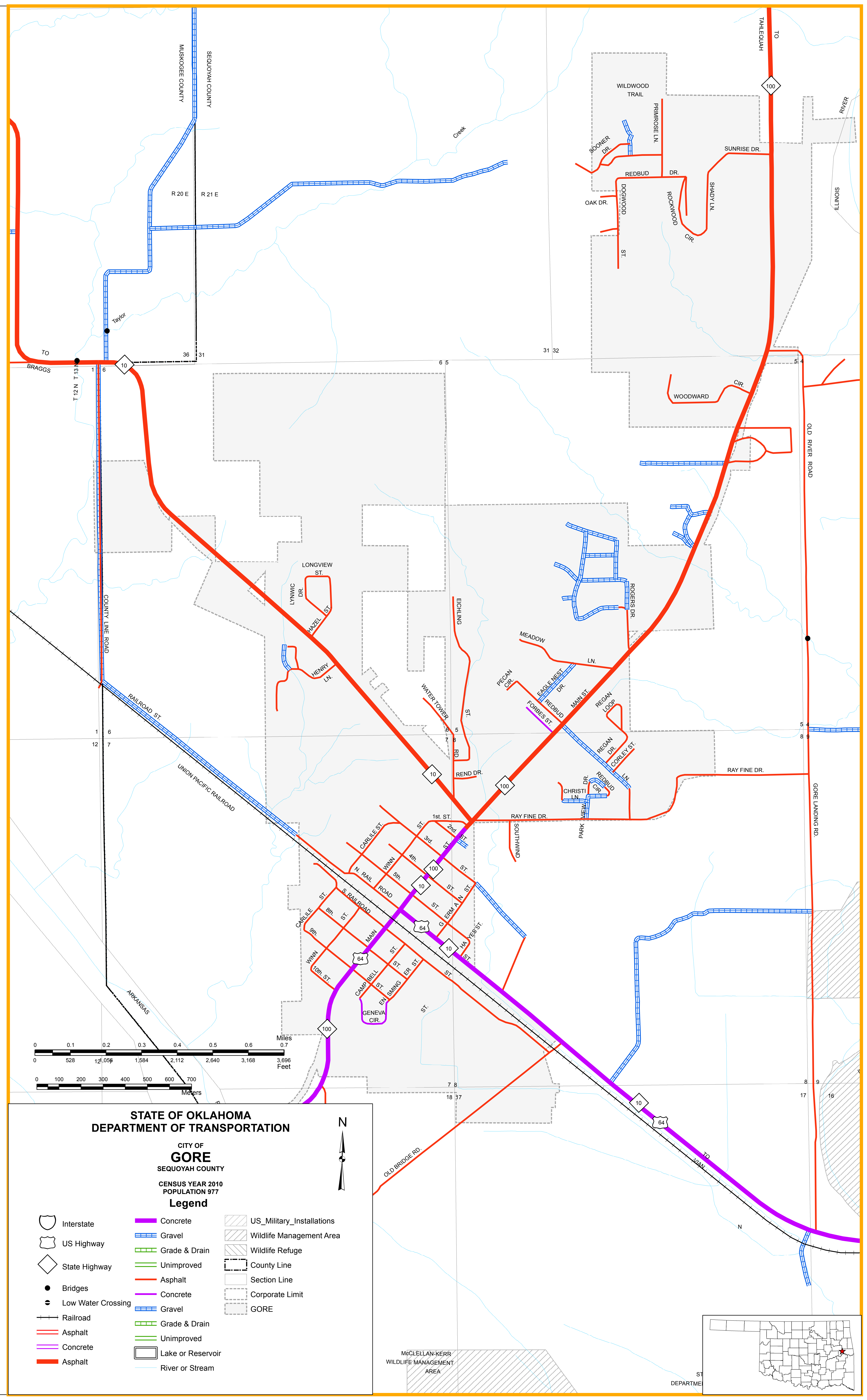


Copies of this map are available for public use at nominal cost.
 OKLAHOMA DEPARTMENT OF TRANSPORTATION
 PRINTING SERVICES Phone (405) 521-2585
 200 N.E. 21st STREET
 OKLAHOMA CITY, OKLAHOMA 73105-3204

This map indicates those roads known to the Department to be open to public travel. Placement of a road on the map has no relationship to maintenance responsibility by any level of government.



**STATE OF OKLAHOMA
 DEPARTMENT OF TRANSPORTATION**

**CITY OF GORE
 SEQUOYAH COUNTY**

CENSUS YEAR 2010
 POPULATION 977

Legend

Interstate	Concrete	US_Military_Installations
US Highway	Gravel	Wildlife Management Area
State Highway	Grade & Drain	Wildlife Refuge
Bridges	Unimproved	County Line
Low Water Crossing	Asphalt	Section Line
Railroad	Concrete	Corporate Limit
Asphalt	Gravel	GORE
Concrete	Grade & Drain	
Asphalt	Unimproved	
	Lake or Reservoir	
	River or Stream	

