

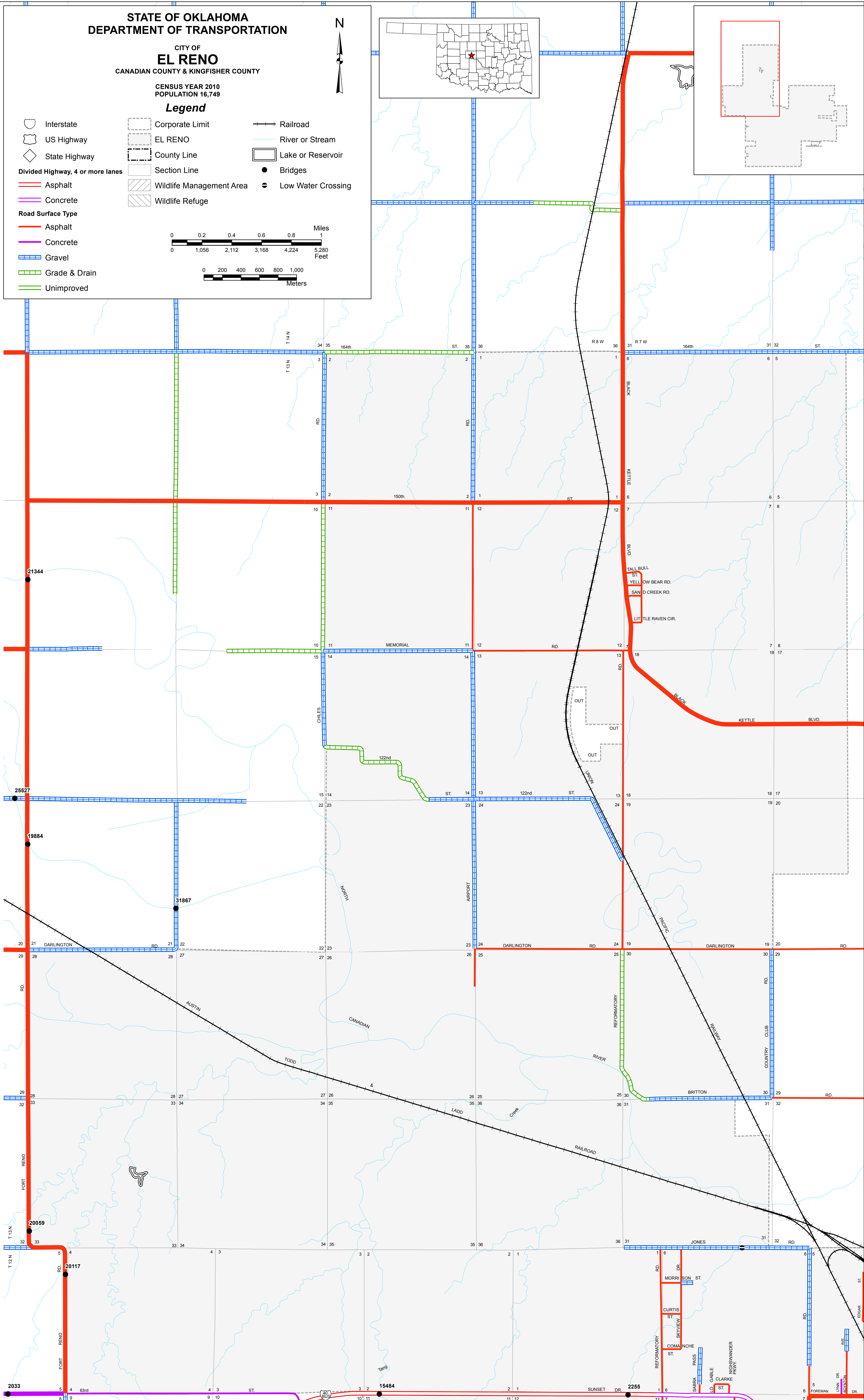
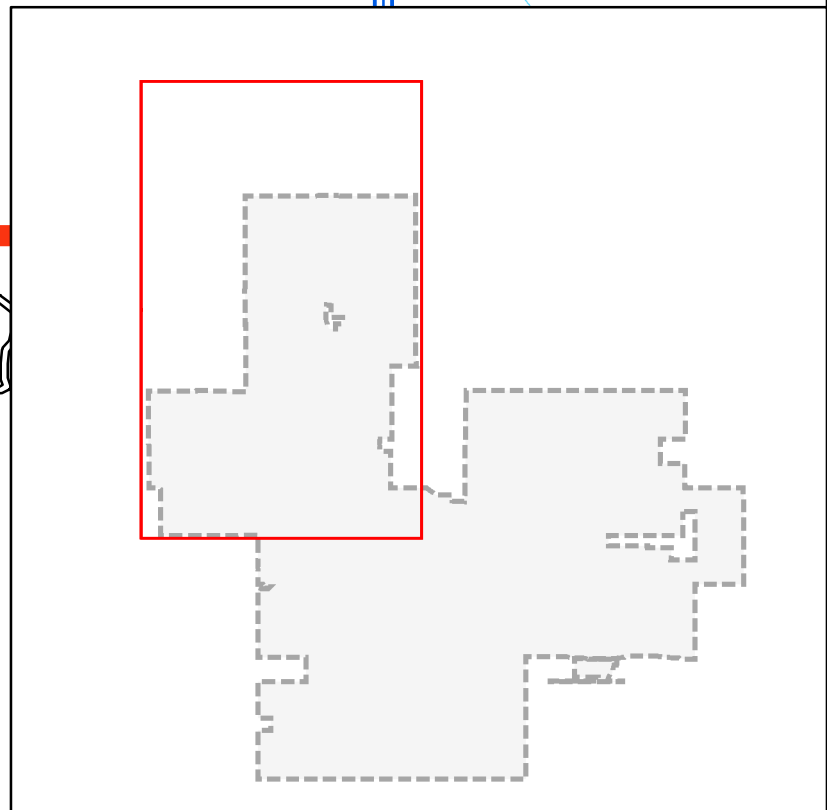
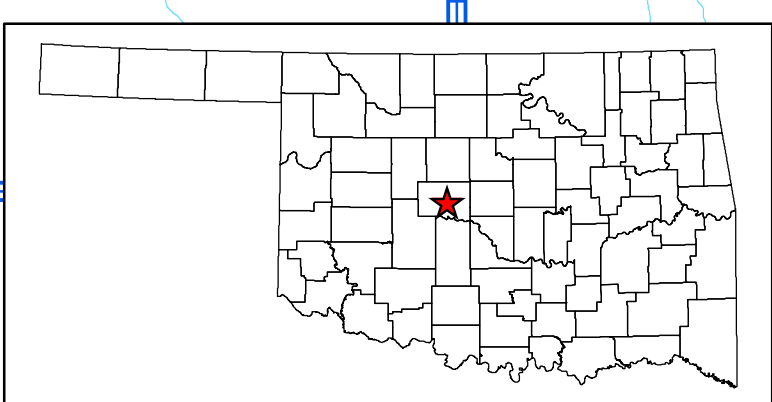
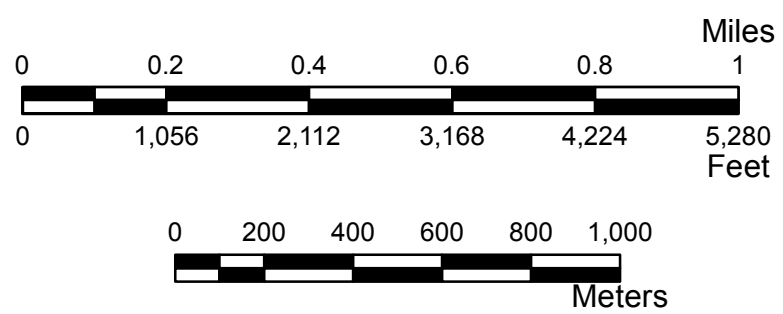
STATE OF OKLAHOMA  
DEPARTMENT OF TRANSPORTATION

CITY OF  
**EL RENO**  
CANADIAN COUNTY & KINGFISHER COUNTY

CENSUS YEAR 2010  
POPULATION 16,749

**Legend**

- |                                  |                          |                    |
|----------------------------------|--------------------------|--------------------|
| Interstate                       | Corporate Limit          | Railroad           |
| US Highway                       | EL RENO                  | River or Stream    |
| State Highway                    | County Line              | Lake or Reservoir  |
| Divided Highway, 4 or more lanes | Section Line             | Bridges            |
| Asphalt                          | Wildlife Management Area | Low Water Crossing |
| Concrete                         | Wildlife Refuge          |                    |
| Gravel                           |                          |                    |
| Grade & Drain                    |                          |                    |
| Unimproved                       |                          |                    |



EL RENO SHEET 1

Copies of this map are available for public use at nominal cost.

OKLAHOMA DEPARTMENT OF TRANSPORTATION  
PRINTING SERVICES Phone (405) 524-2566  
200 N.E. 21st STREET  
OKLAHOMA CITY, OKLAHOMA 73105-3204

This map indicates those roads known to the Department to be open to public travel. Placement of a road on the map has no relationship to maintenance responsibility by any level of government.

© COPYRIGHT 2018  
PRINTED AT STATE EXPENSE

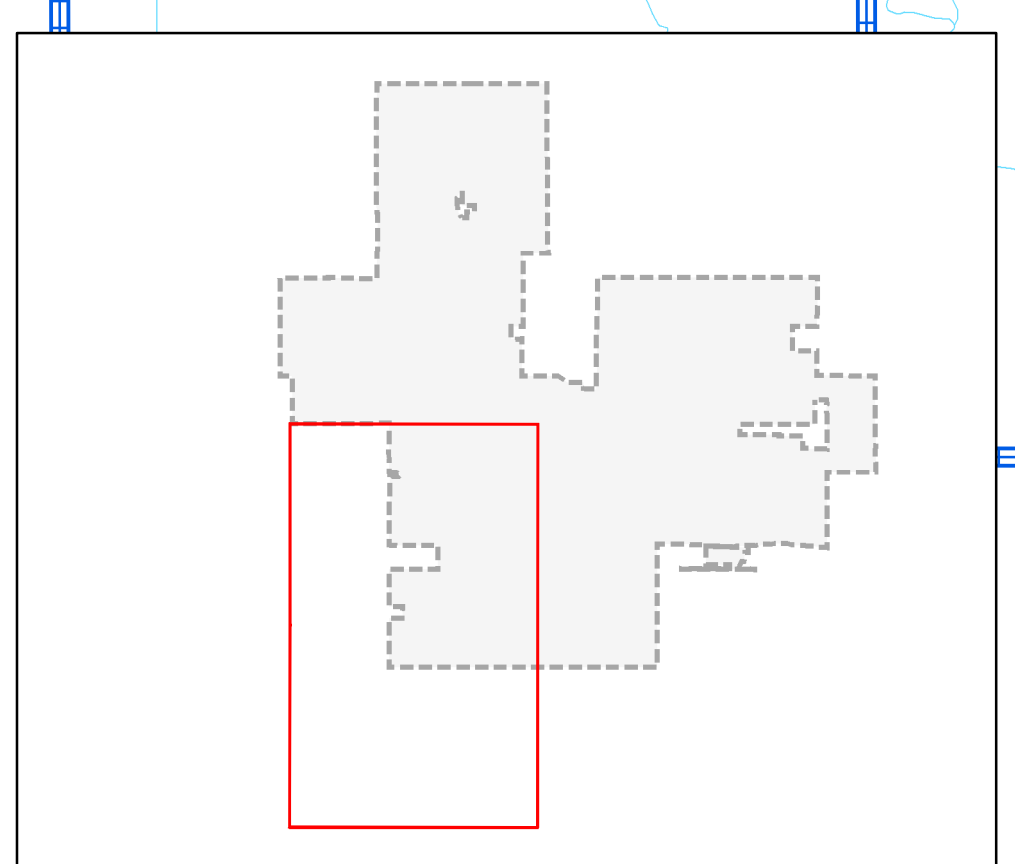
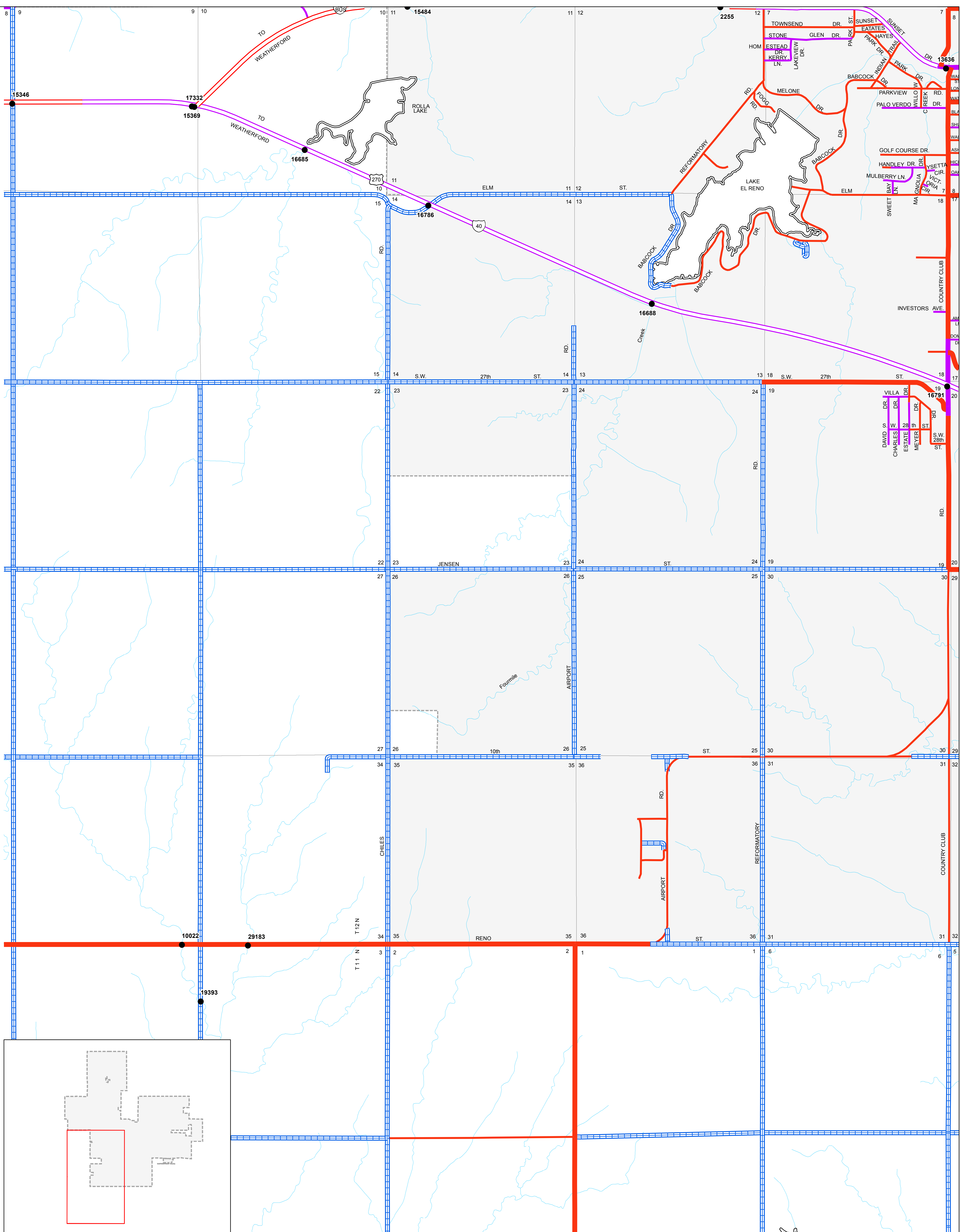
**NOT FOR RESALE**

ALL RIGHTS RESERVED  
COMPUTER GENERATED September 2018  
EL RENO, CANADIAN COUNTY



Copies of this map are available for public use at nominal cost.  
OKLAHOMA DEPARTMENT OF TRANSPORTATION  
PRINTING SERVICES Phone (405) 521-2566  
200 N.E. 21st STREET  
OKLAHOMA CITY, OKLAHOMA 73105-3204

This map indicates those roads known to the Department to be open to public travel. Placement of a road on the map has no relationship to maintenance responsibility by any level of government.



**STATE OF OKLAHOMA  
DEPARTMENT OF TRANSPORTATION**

CITY OF  
**EL RENO**  
CANADIAN COUNTY & KINGFISHER COUNTY

CENSUS YEAR 2010  
POPULATION 16,749

**Legend**

Interstate	Corporate Limit	Railroad
US Highway	EL RENO	River or Stream
State Highway	County Line	Lake or Reservoir
Divided Highway, 4 or more lanes	Section Line	Bridges
Asphalt	Wildlife Management Area	Low Water Crossing
Concrete	Wildlife Refuge	
<b>Road Surface Type</b>		
Asphalt		
Concrete		
Gravel		
Grade & Drain		
Unimproved		

N

0 0.2 0.4 0.6 0.8 1 Miles  
0 1,056 2,112 3,168 4,224 5,280 Feet

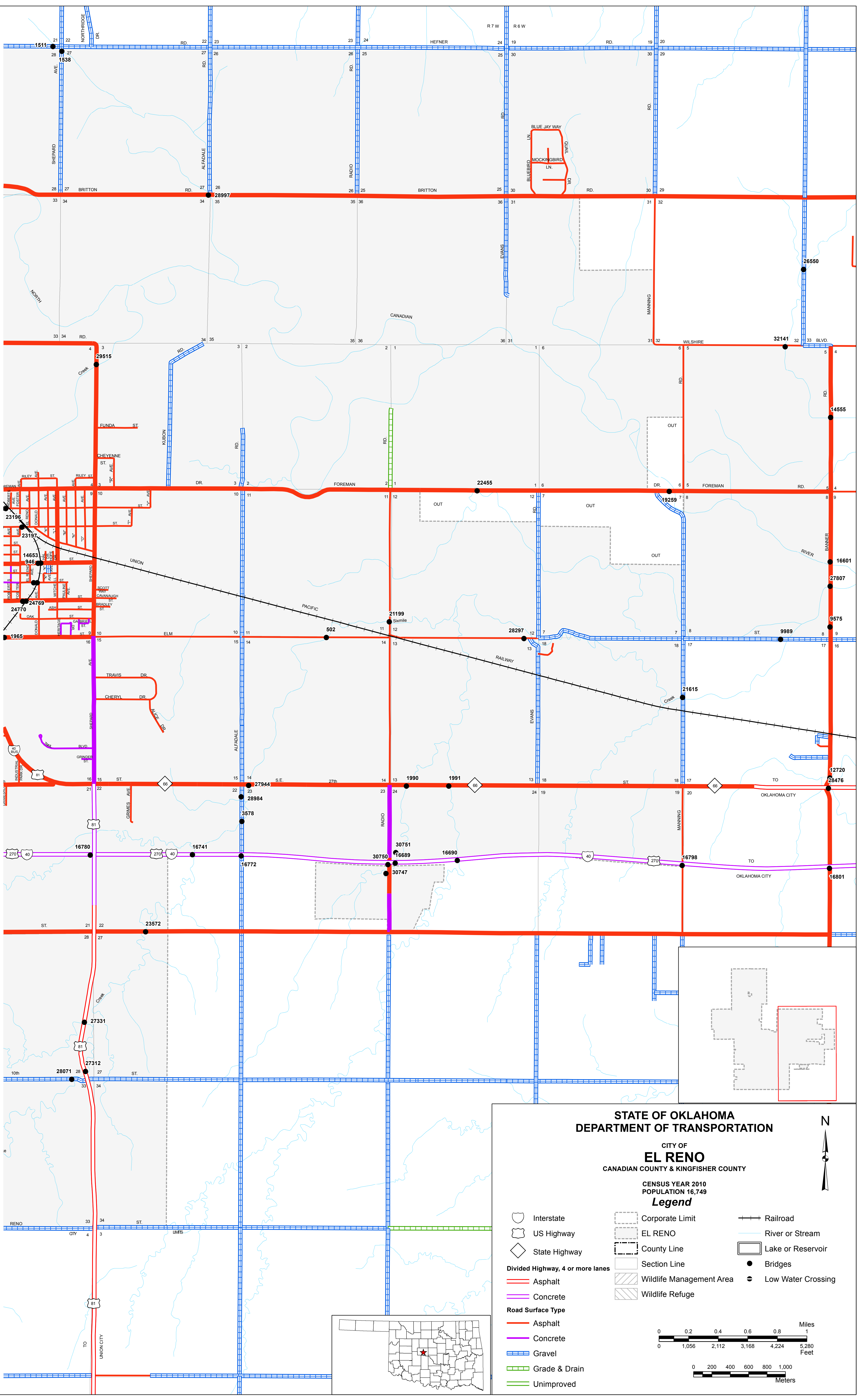
0 200 400 600 800 1,000 Meters



Copies of this map are available for public use at nominal cost.  
OKLAHOMA DEPARTMENT OF TRANSPORTATION  
PRINTING SERVICES Phone (405) 524-2586  
200 N.E. 21st STREET  
OKLAHOMA CITY, OKLAHOMA 73105-3204

This map indicates those roads known to the Department to be open to public travel. Placement of a road on the map has no relationship to maintenance responsibility by any level of government.

NOT FOR SALE



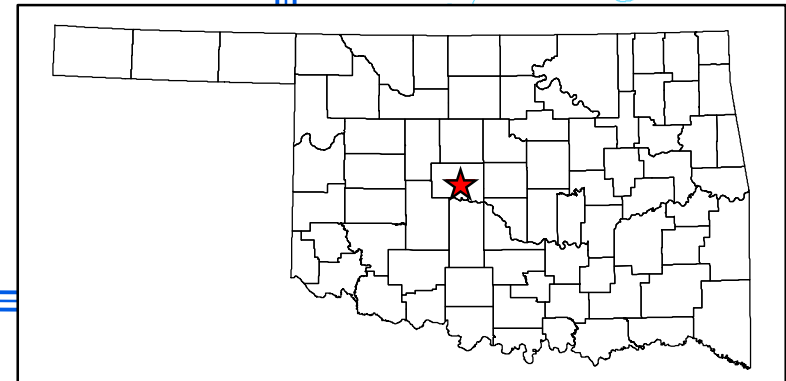
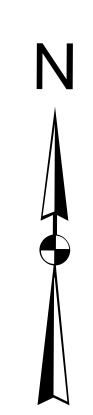
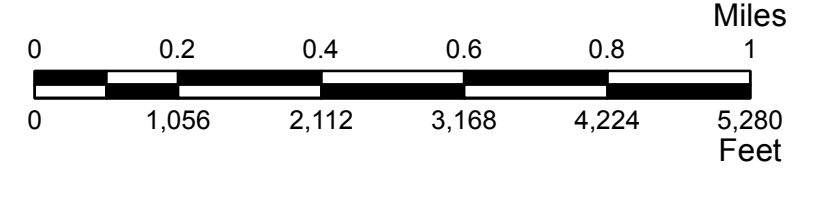
STATE OF OKLAHOMA  
DEPARTMENT OF TRANSPORTATION

CITY OF  
**EL RENO**  
CANADIAN COUNTY & KINGFISHER COUNTY

CENSUS YEAR 2010  
POPULATION 16,749

**Legend**

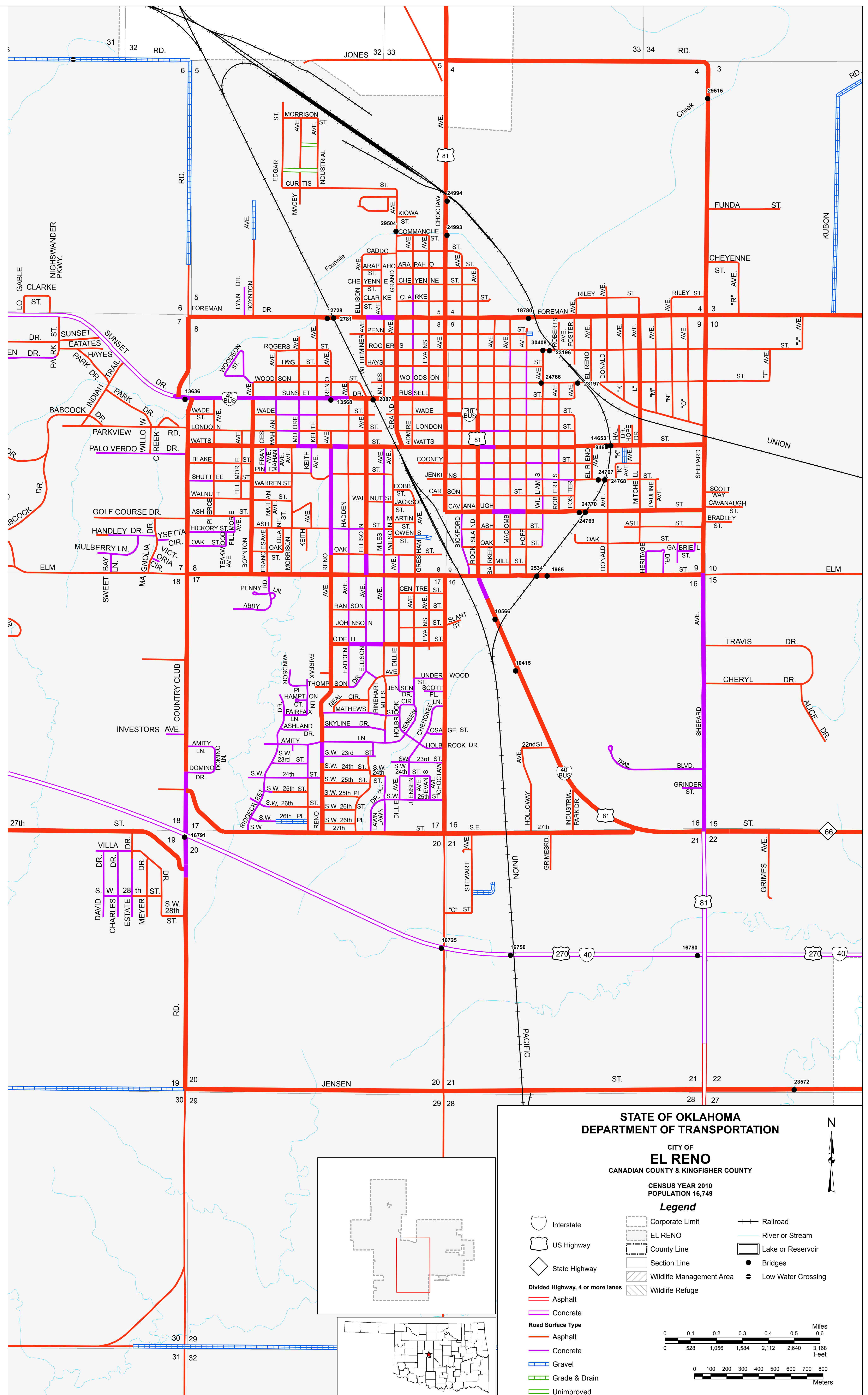
- Interstate
- US Highway
- State Highway
- Divided Highway, 4 or more lanes
- Asphalt
- Concrete
- Gravel
- Grade & Drain
- Unimproved
- Corporate Limit
- EL RENO
- County Line
- Section Line
- Wildlife Management Area
- Wildlife Refuge
- Railroad
- River or Stream
- Lake or Reservoir
- Bridges
- Low Water Crossing





Copies of this map are available for public use at nominal cost.  
OKLAHOMA DEPARTMENT OF TRANSPORTATION  
PRINTING SERVICES Phone (405) 521-2586  
200 N.E. 21st STREET  
OKLAHOMA CITY, OKLAHOMA 73105-3204

This map indicates those roads known to the Department to be open to public travel. Placement of a road on the map has no relationship to maintenance responsibility by any level of government.



STATE OF OKLAHOMA  
DEPARTMENT OF TRANSPORTATION

CITY OF  
**EL RENO**  
CANADIAN COUNTY & KINGFISHER COUNTY

CENSUS YEAR 2010  
POPULATION 16,749

Legend

- Interstate
- US Highway
- State Highway
- Divided Highway, 4 or more lanes
- Asphalt
- Concrete
- Gravel
- Grade & Drain
- Unimproved
- Corporate Limit
- County Line
- Section Line
- Wildlife Management Area
- Wildlife Refuge
- Railroad
- River or Stream
- Lake or Reservoir
- Bridges
- Low Water Crossing

