

**Legend**

	Interstate		Asphalt		Corporate Limit		Bridges
	State		Concrete		DURANT		Low Water Crossing
	US		Gravel		County Line		Railroad
	Highways		Grade & Drain		Section Line		River or Stream
	Local Roads		Unimproved		Wildlife Management Area		Lake or Reservoir
	Road Common				Wildlife Refuge		

**STATE OF OKLAHOMA  
DEPARTMENT OF TRANSPORTATION**

**CITY OF  
DURANT  
BRYAN COUNTY**

CENSUS YEAR 2010  
POPULATION 15,856

0 1/4 1/2 3/4 1 2 Miles  
0 1,320 2,640 3,960 5,280 10,560 Feet  
0 200 400 600 800 1,000 2,000 3,000 Meters

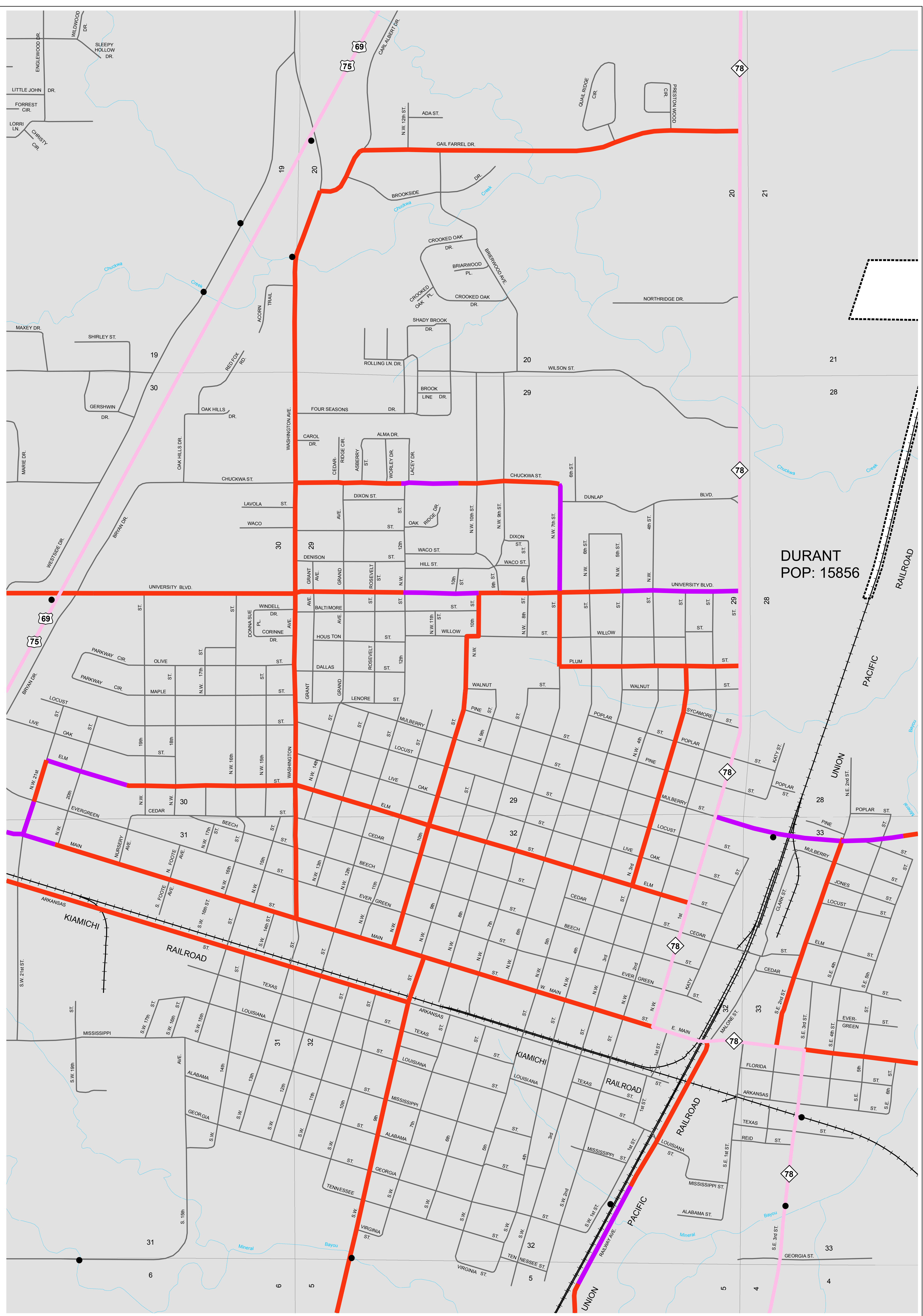
Sheet Reference

Copies of this map are available for public use at nominal cost.  
OKLAHOMA DEPARTMENT OF TRANSPORTATION  
PRINTING SERVICES Phone (405) 521-2566  
200 N.E. 21st STREET  
OKLAHOMA CITY, OKLAHOMA 73105-3204

This map indicates those roads known to the Department to be open to public travel. Placement of a road on the map has no relationship to maintenance responsibility by any level of government.

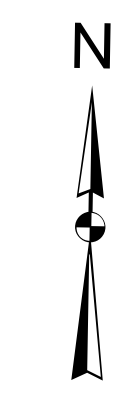
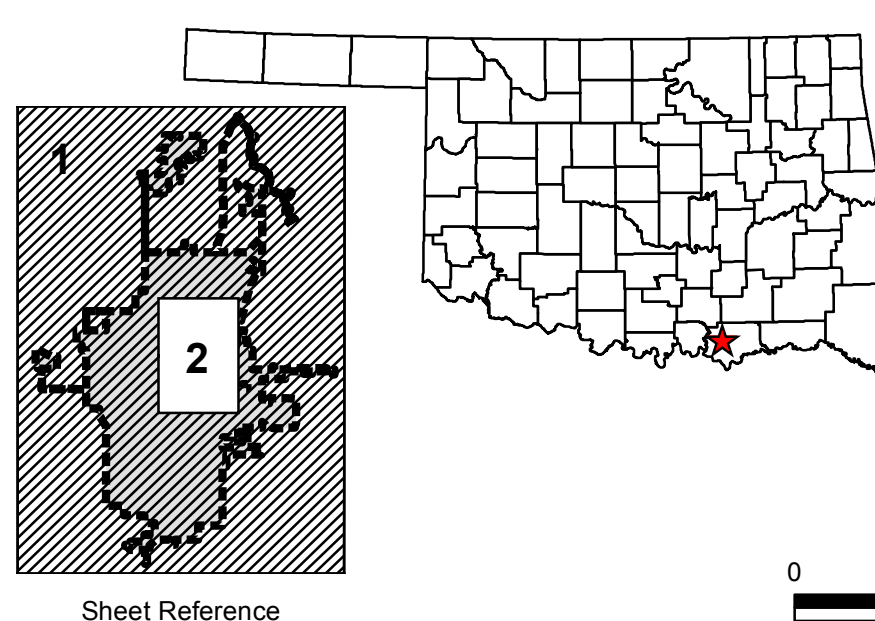
Copies of this map are available for public use at nominal cost.  
 OKLAHOMA DEPARTMENT OF TRANSPORTATION  
 PRINTING SERVICES Phone (405) 521-2586  
 200 N.E. 21st STREET  
 OKLAHOMA CITY, OKLAHOMA 73105-3204

This map indicates those roads known to the Department to be open to public travel. Placement of a road on the map has no relationship to maintenance responsibility by any level of government.



**Legend**

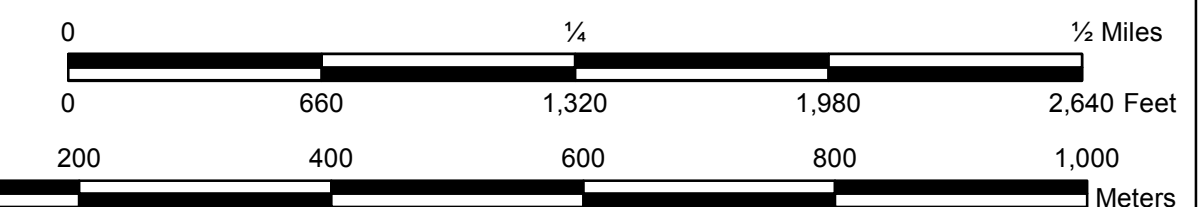
- |  |             |  |               |  |                          |  |                    |
|--|-------------|--|---------------|--|--------------------------|--|--------------------|
|  | Interstate  |  | Asphalt       |  | Corporate Limit          |  | Bridges            |
|  | State       |  | Concrete      |  | DURANT                   |  | Low Water Crossing |
|  | US          |  | Gravel        |  | County Line              |  | Railroad           |
|  | Highways    |  | Grade & Drain |  | Section Line             |  | River or Stream    |
|  | Local Roads |  | Unimproved    |  | Wildlife Management Area |  | Lake or Reservoir  |
|  | Road Common |  |               |  | Wildlife Refuge          |  |                    |



**STATE OF OKLAHOMA  
 DEPARTMENT OF TRANSPORTATION**

**CITY OF  
 DURANT**  
 BRYAN COUNTY

CENSUS YEAR 2010  
 POPULATION 15,856



Sheet Reference