

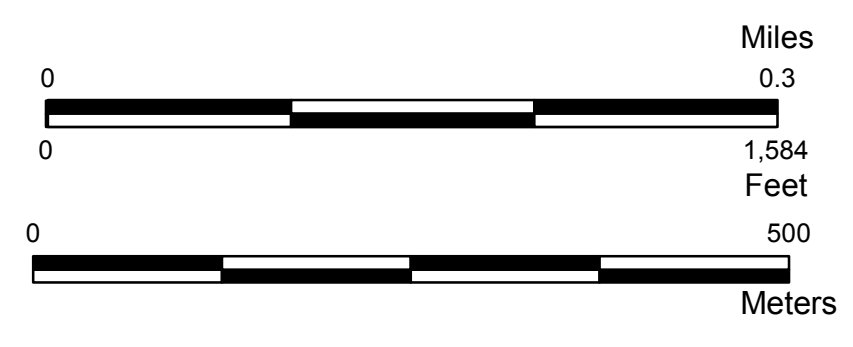
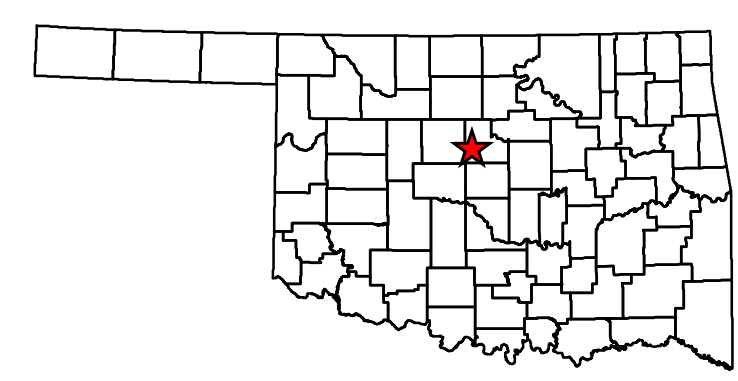
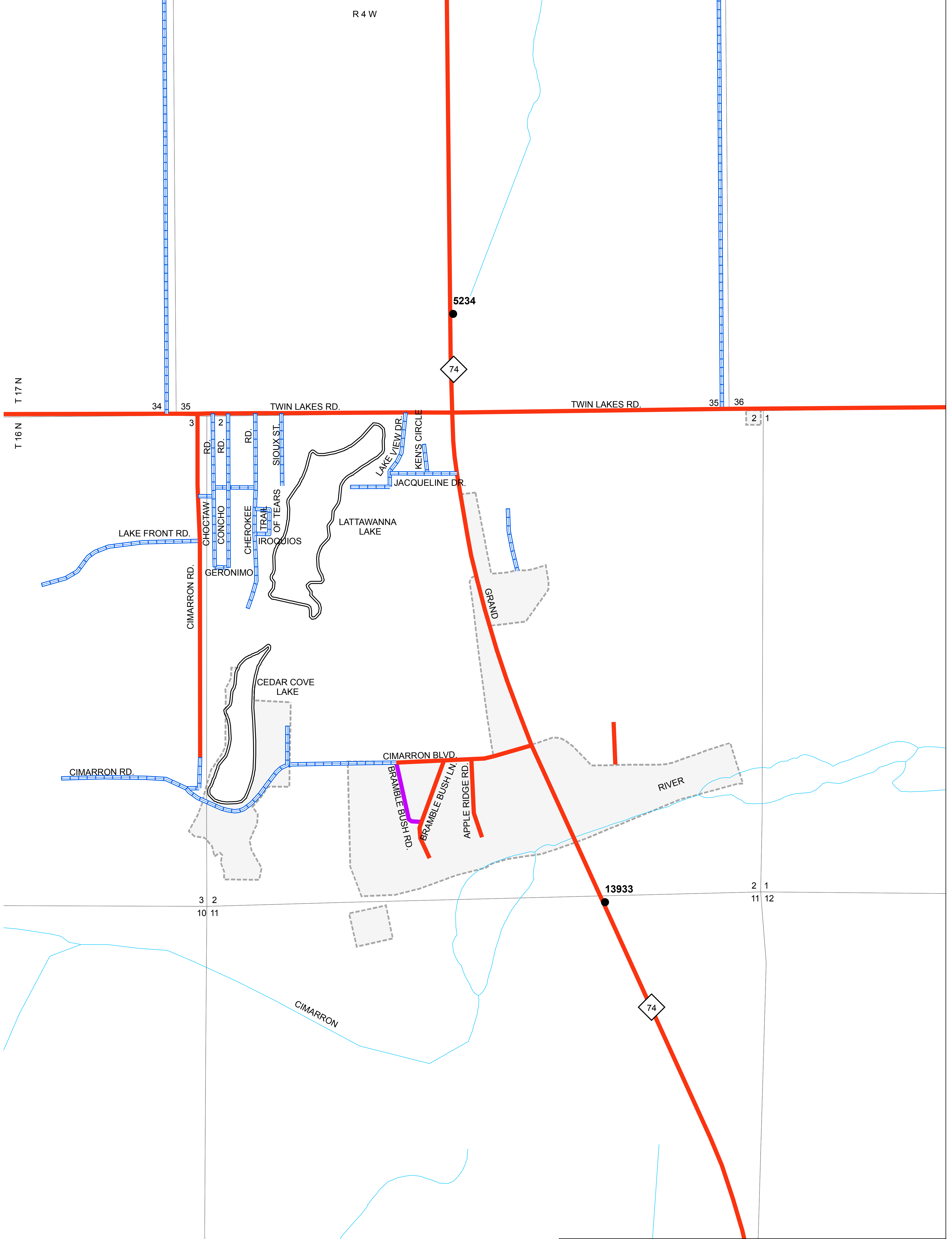
Copies of this map are available for public use at nominal cost.
 Address:
 OKLAHOMA DEPARTMENT OF TRANSPORTATION
 PRINTING SERVICES Phone (405) 521-2586
 200 N.E. 21st STREET
 OKLAHOMA CITY, OKLAHOMA 73105-3204
 CIMARRON CITY

This map indicates those roads known to the Department to be open to public travel. Placement of a road on the map has no relationship to maintenance responsibility by any level of government.

© COPYRIGHT 2018
 PRINTED AT STATE EXPENSE

NOT FOR RESALE

ALL RIGHTS RESERVED
 COMPUTER GENERATED
 CIMARRON CITY, LOGAN COUNTY
 September 2018



STATE OF OKLAHOMA
DEPARTMENT OF TRANSPORTATION

CITY OF
CIMARRON CITY
 LOGAN COUNTY

CENSUS YEAR 2010
 POPULATION 150

Legend

	State Highway		County Line
	U.S. Highway		State Line
	Interstate		Section Line
	Divided Highway, 4 or more lanes		Wildlife Management Area
	Asphalt		Wildlife Refuge
	Concrete		River or Stream
	Gravel		Lake or Reservoir
	Grade & Drain		Railroad
	Unimproved		Corporate Limit
	Cimarron City		Bridges
			Low Water Crossing