

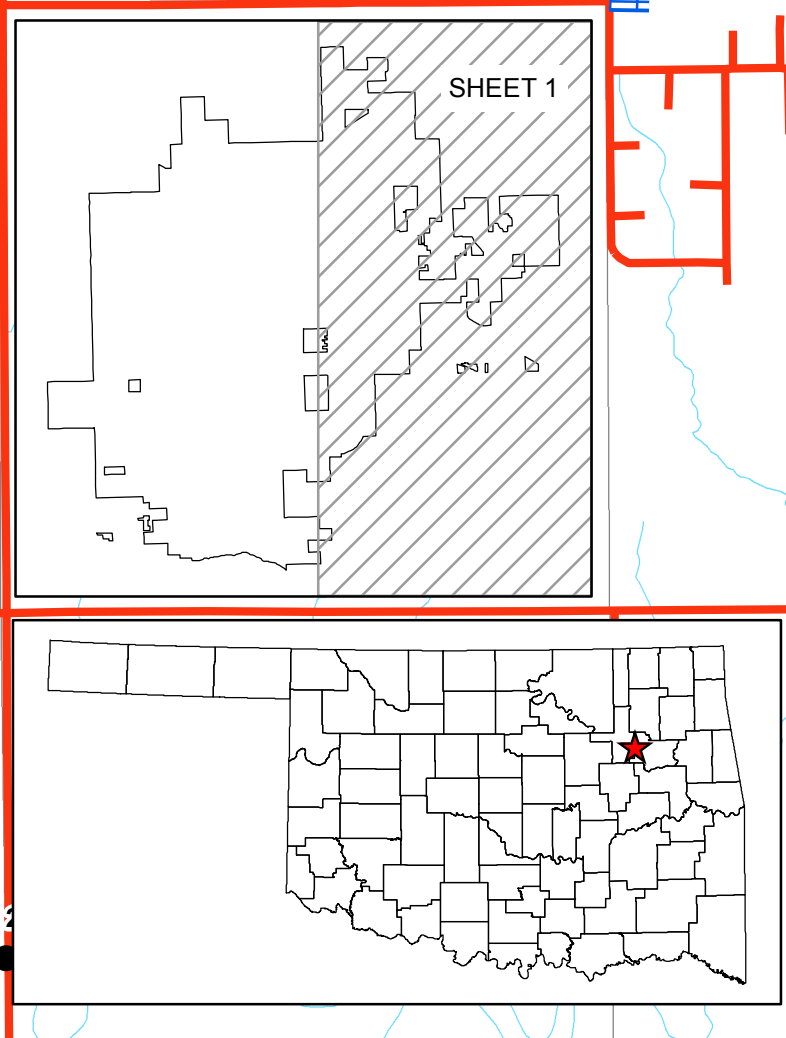
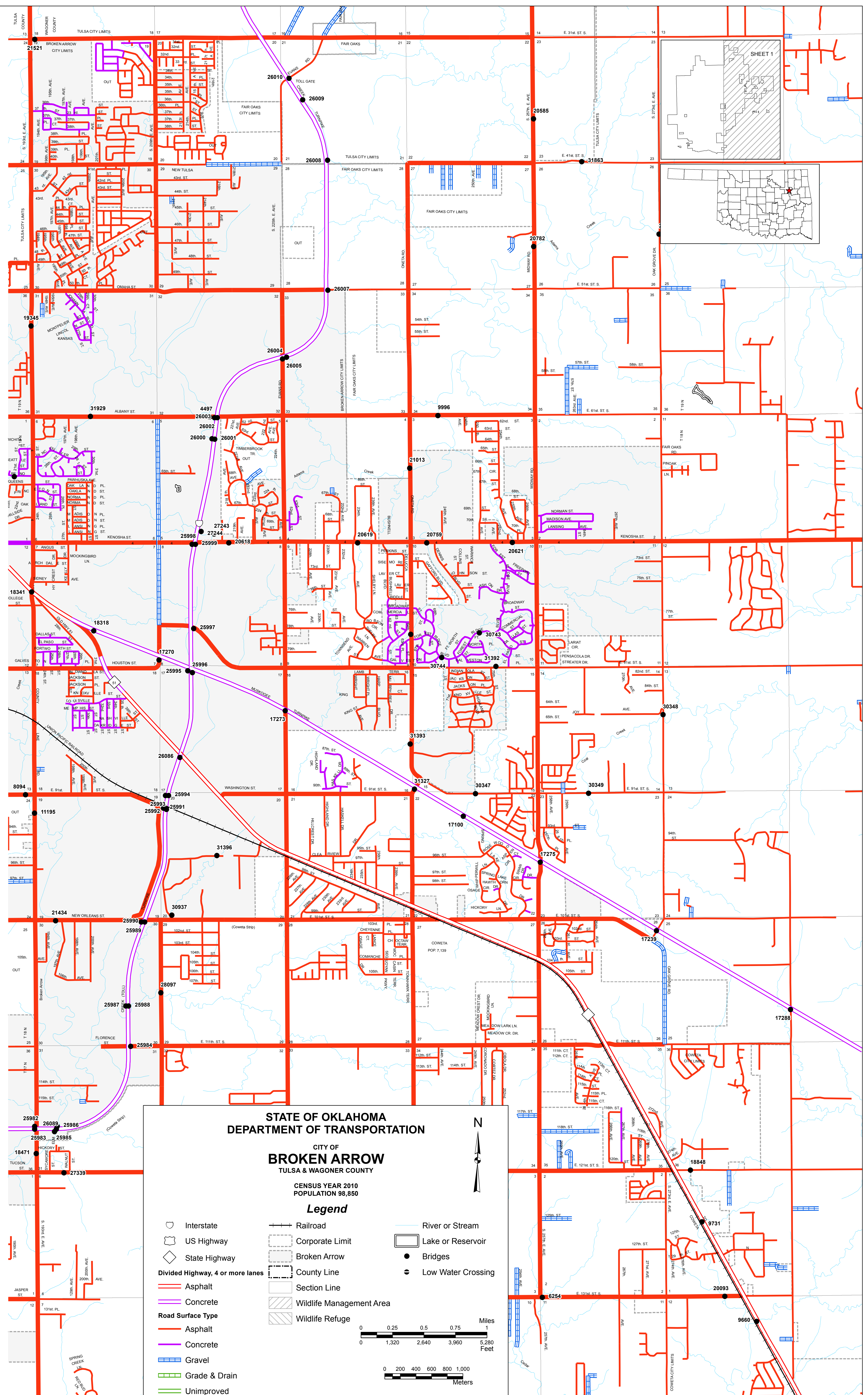
Copies of this map are available for public use at nominal cost.
 OKLAHOMA DEPARTMENT OF TRANSPORTATION
 PRINTING SERVICES Phone (405) 521-2566
 200 N.E. 21st STREET
 OKLAHOMA CITY, OKLAHOMA 73105-3204

This map indicates those roads known to the Department to be open to public travel. Placement of a road on the map has no relationship to maintenance responsibility by any level of government.

© COPYRIGHT 2018
 PRINTED AT STATE EXPENSE

NOT FOR RESALE

ALL RIGHTS RESERVED. COMPUTER GENERATED. September, 2018
 BROKEN ARROW, TULSA & WAGONER COUNTY



STATE OF OKLAHOMA
DEPARTMENT OF TRANSPORTATION

CITY OF
BROKEN ARROW
 TULSA & WAGONER COUNTY

CENSUS YEAR 2010
 POPULATION 98,850

Legend

N

0 0.25 0.5 0.75 1 Miles
 0 1,320 2,640 3,960 5,280 Feet

0 200 400 600 800 1,000 Meters

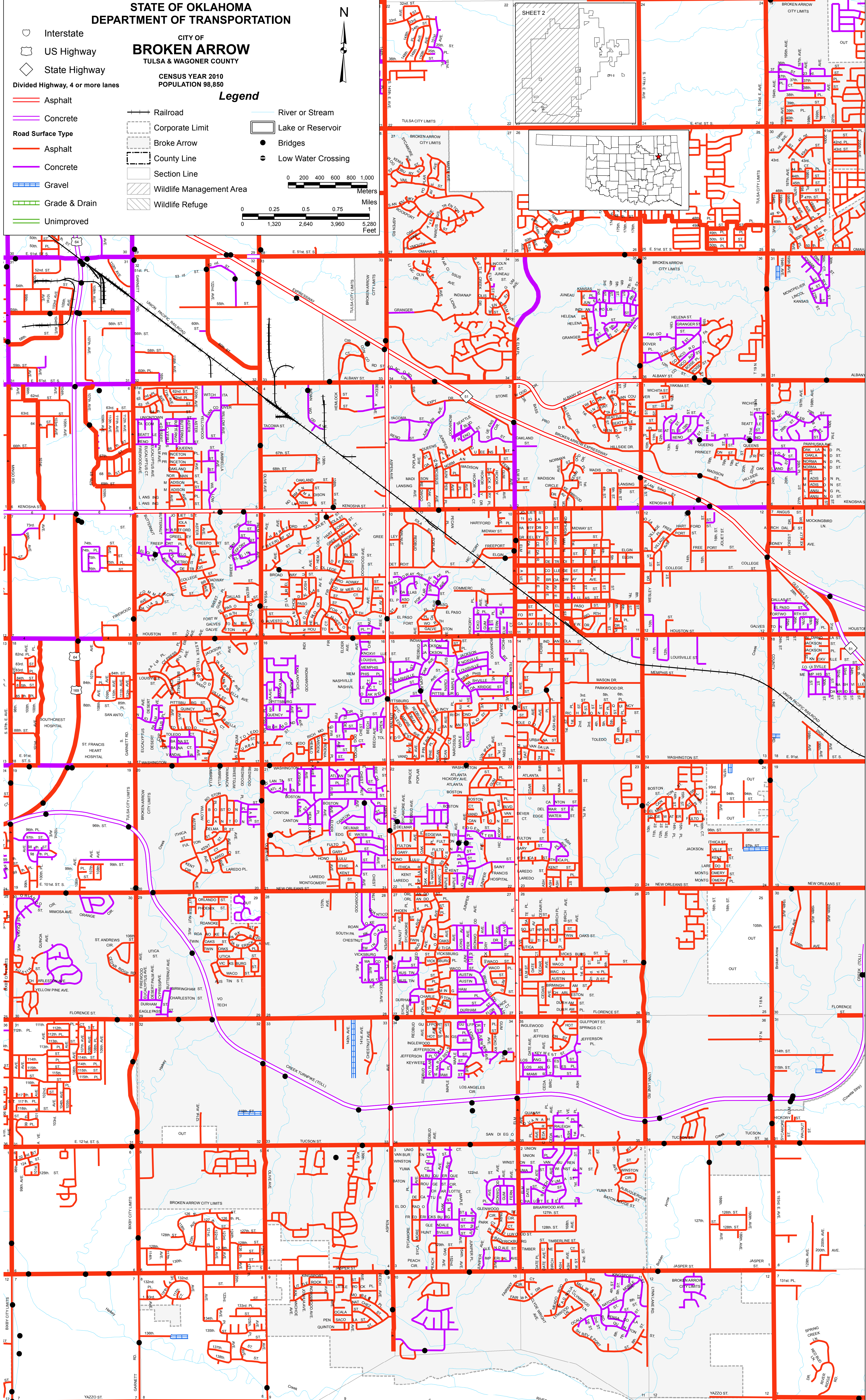
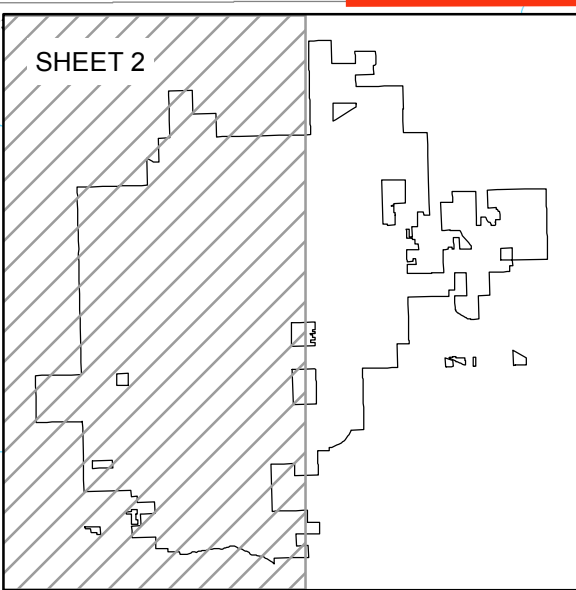
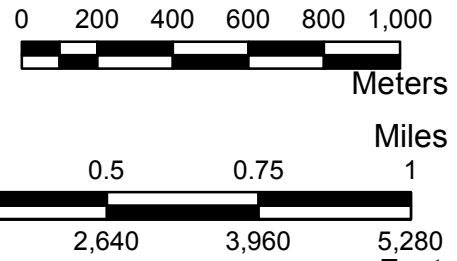
STATE OF OKLAHOMA
DEPARTMENT OF TRANSPORTATION

CITY OF
BROKEN ARROW
TULSA & WAGONER COUNTY

CENSUS YEAR 2010
POPULATION 98,850

Legend

- Interstate
- US Highway
- State Highway
- Divided Highway, 4 or more lanes
- Asphalt
- Concrete
- Road Surface Type
 - Asphalt
 - Concrete
 - Gravel
 - Grade & Drain
 - Unimproved
- Railroad
- Corporate Limit
- Broke Arrow
- County Line
- Section Line
- Wildlife Management Area
- Wildlife Refuge
- River or Stream
- Lake or Reservoir
- Bridges
- Low Water Crossing



BROKEN ARROW SHEET 2

Copies of this map are available for public use at nominal cost.

OKLAHOMA DEPARTMENT OF TRANSPORTATION
PRINTING SERVICES Phone (405) 521-2566
200 N.E. 21st STREET
OKLAHOMA CITY, OKLAHOMA 73105-3204

This map indicates those roads known to the Department to be open to public travel. Placement of a road on the map has no relationship to maintenance responsibility by any level of government.

© COPYRIGHT 2018
PRINTED AT STATE EXPENSE

NOT FOR RESALE

ALL RIGHTS RESERVED. COMPUTER GENERATED. September 2018

BROKEN ARROW, TULSA & WAGONER COUNTY