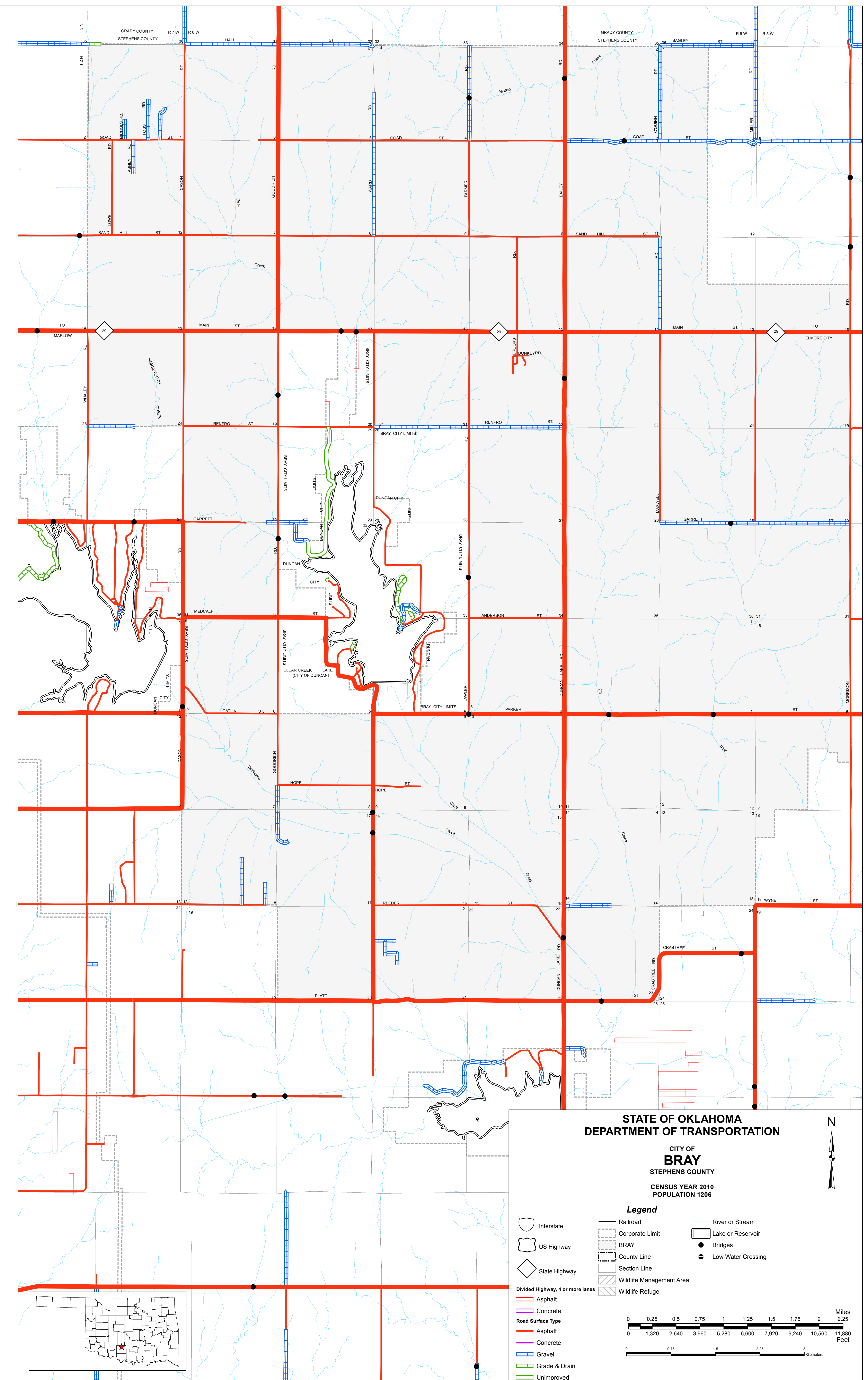


Copies of this map are available for public use at nominal cost.
 OKLAHOMA DEPARTMENT OF TRANSPORTATION
 PRINTING SERVICES Phone (405) 521-2586
 200 N.E. 21st STREET
 OKLAHOMA CITY, OKLAHOMA 73105-3204

This map indicates those roads known to the Department to be open to public travel. Placement of a road on the map has no relationship to maintenance responsibility by any level of government.

© COPYRIGHT 2018
 PRINTED AT STATE EXPENSE
 NOT FOR RESALE
 ALL RIGHTS RESERVED
 COMPUTER GENERATED
 September 2018



STATE OF OKLAHOMA
 DEPARTMENT OF TRANSPORTATION

CITY OF
BRAY
 STEPHENS COUNTY

CENSUS YEAR 2010
 POPULATION 1206

Legend

	Interstate		Railroad		River or Stream
	US Highway		Corporate Limit		Lake or Reservoir
	State Highway		BRAY		Bridges
	Divided Highway, 4 or more lanes		County Line		Low Water Crossing
	Asphalt		Section Line		
	Concrete		Wildlife Management Area		
	Gravel		Wildlife Refuge		
	Grade & Drain				
	Unimproved				

