

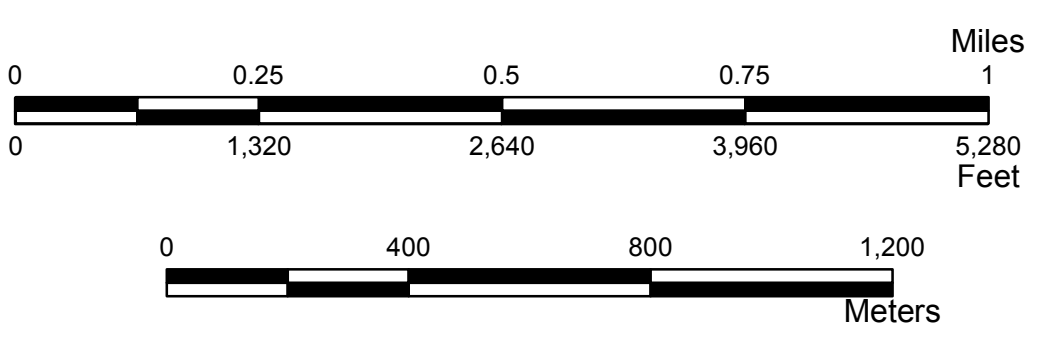
STATE OF OKLAHOMA
DEPARTMENT OF TRANSPORTATION

CITY OF
BARTLESVILLE
WASHINGTON COUNTY

CENSUS YEAR 2010
POPULATION 35,750

Legend

- Interstate
- US Highway
- State Highway
- Highways
- Local Roads
- UFC Routes
- Asphalt
- Concrete
- Gravel
- Grade & Drain
- Unimproved
- Railroad
- Corporate Limit
- BARTLESVILLE
- County Line
- Section Line
- Wildlife Management Area
- Wildlife Refuge
- River or Stream
- Lake or Reservoir



Copies of this map are available for public use at nominal cost.
 OKLAHOMA DEPARTMENT OF TRANSPORTATION
 PRINTING SERVICES Phone (405) 524-2586
 200 N.E. 21st STREET
 OKLAHOMA CITY, OKLAHOMA 73105-3204

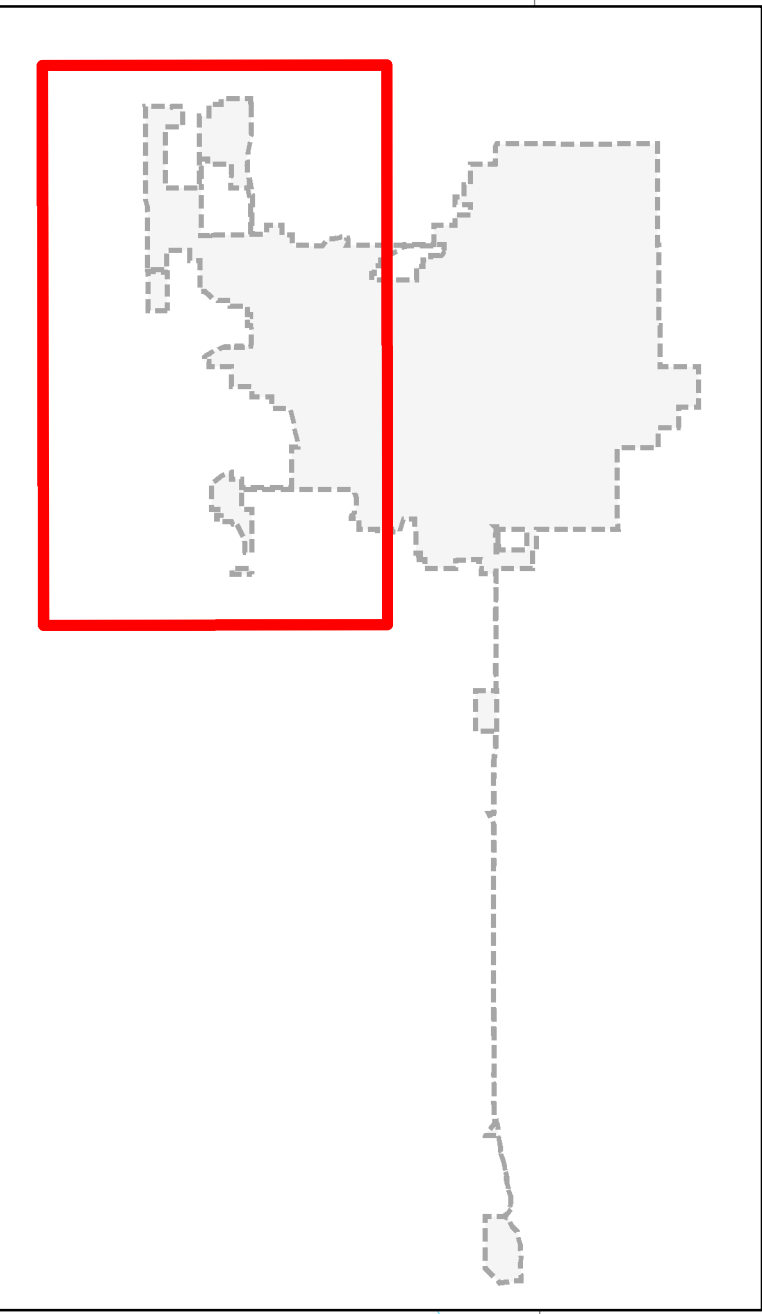
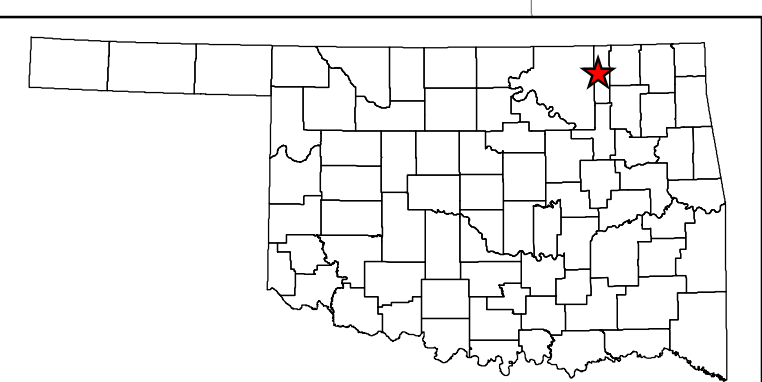
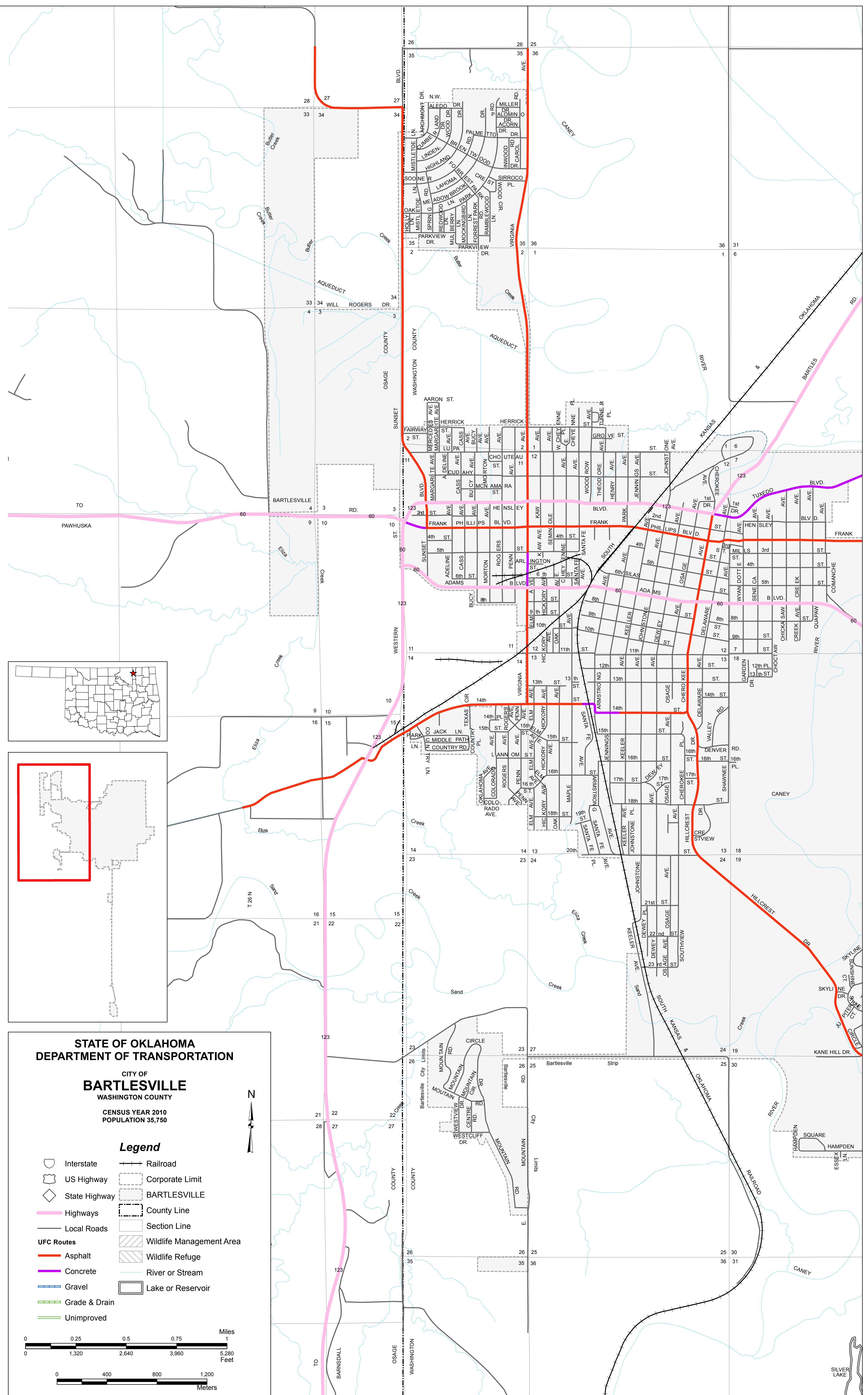
This map indicates those roads known to the Department to be open to public travel. Placement of a road on the map has no relationship to maintenance responsibility by any level of government.

© COPYRIGHT 2018
 PRINTED AT STATE EXPENSE

NOT FOR RESALE

ALL RIGHTS RESERVED
 BARTLESVILLE, WASHINGTON COUNTY
 COMPUTER GENERATED
 September 2018

Copies of this map are available for public use at nominal cost.
OKLAHOMA DEPARTMENT OF TRANSPORTATION
PRINTING SERVICES Phone (405) 524-2566
200 N.E. 21st STREET
OKLAHOMA CITY, OKLAHOMA 73105-3204
This map indicates those roads known to the Department to be open to public travel. Placement of a road on the map has no relationship to maintenance responsibility by any level of government.

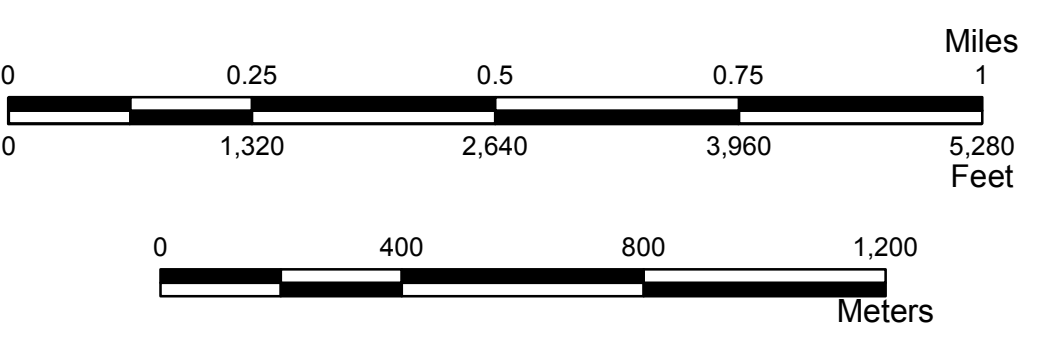


STATE OF OKLAHOMA DEPARTMENT OF TRANSPORTATION

CITY OF
BARTLESVILLE
WASHINGTON COUNTY
CENSUS YEAR 2010
POPULATION 35,750

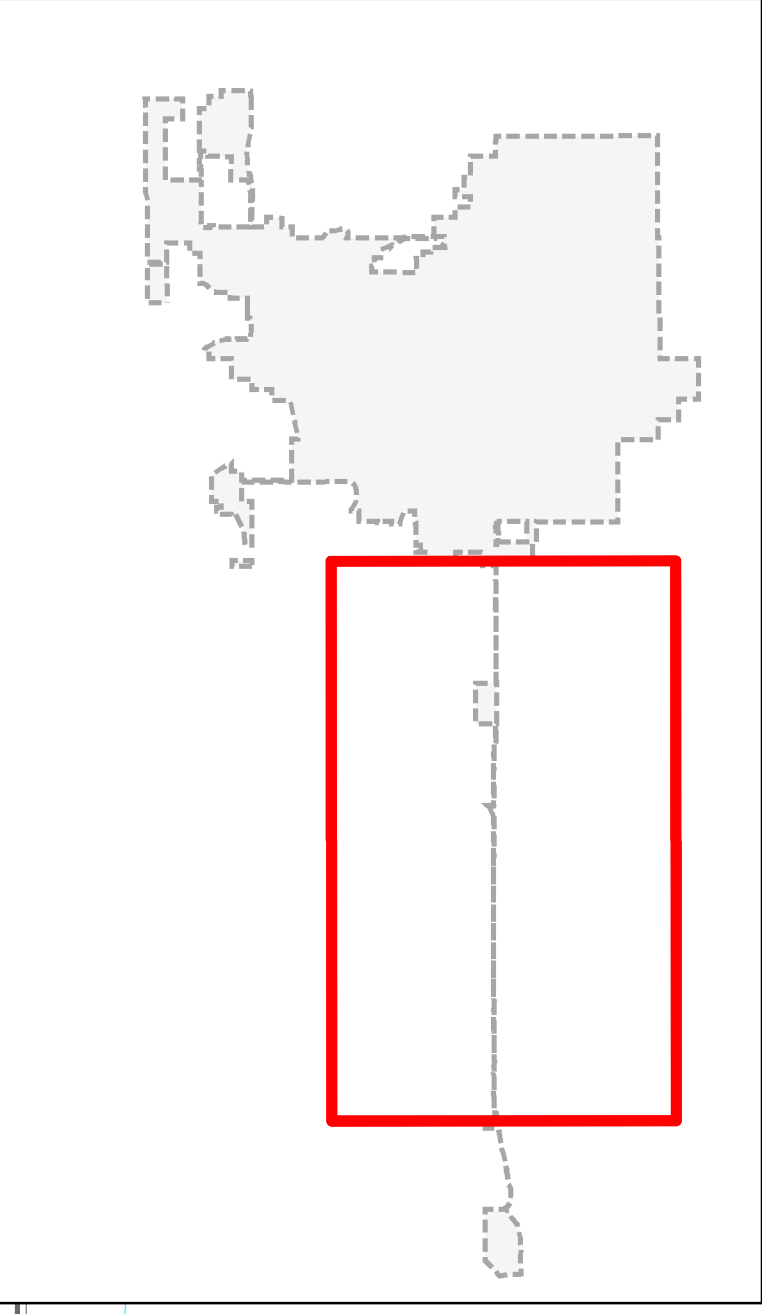
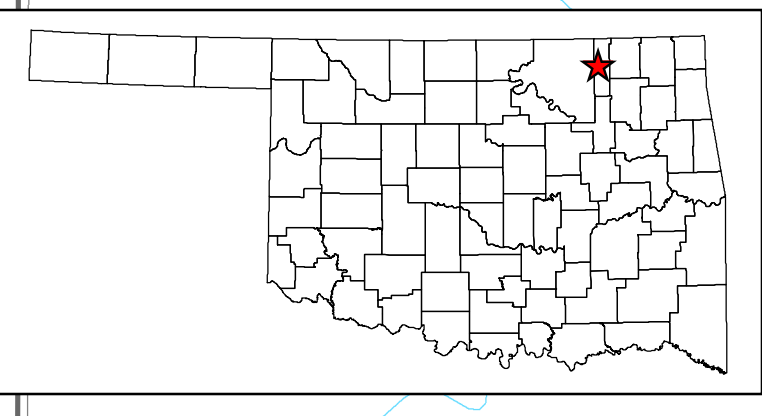
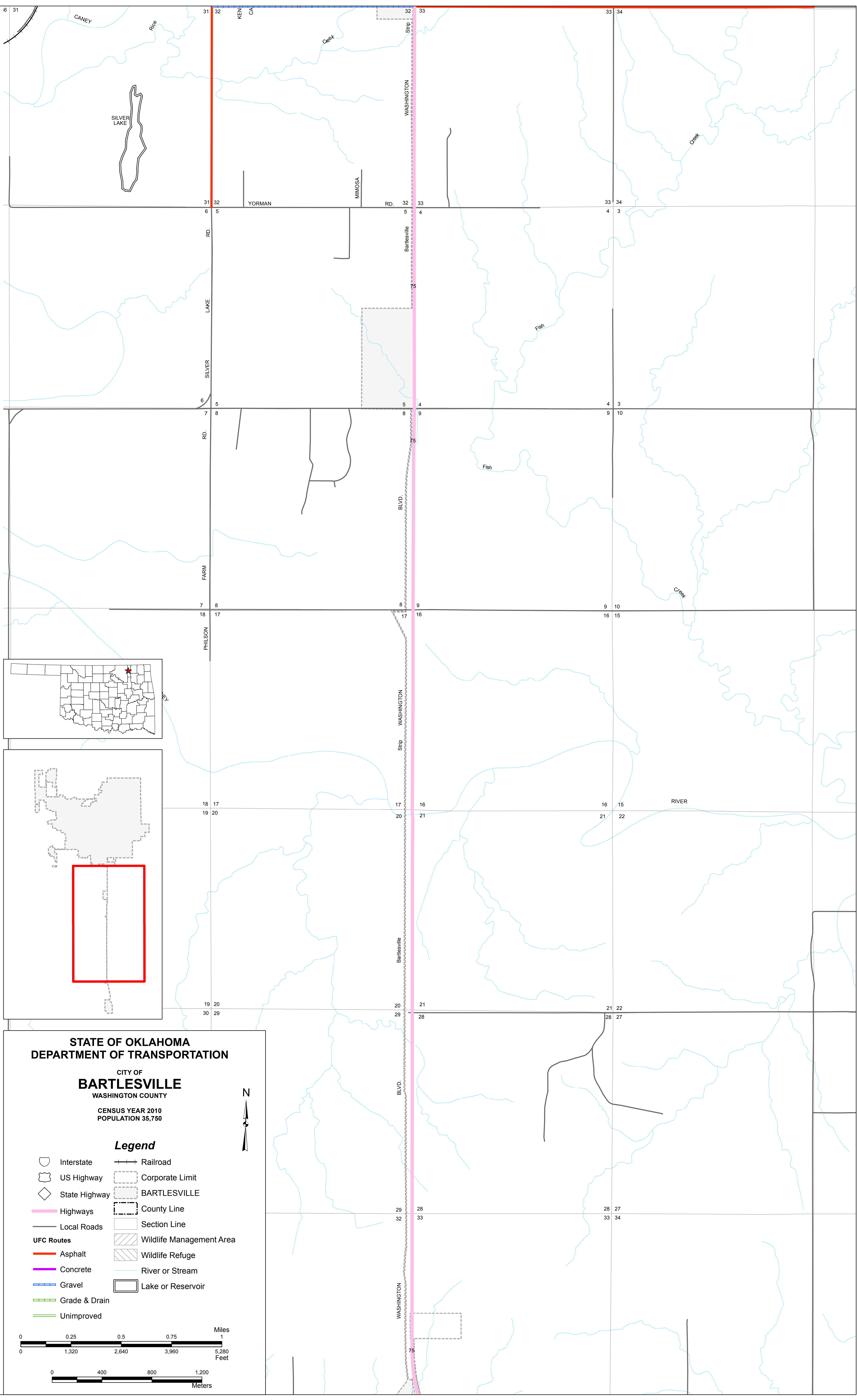
Legend

- Interstate
- US Highway
- State Highway
- Highways
- Local Roads
- UFC Routes
- Asphalt
- Concrete
- Gravel
- Grade & Drain
- Unimproved
- Railroad
- Corporate Limit
- BARTLESVILLE
- County Line
- Section Line
- Wildlife Management Area
- Wildlife Refuge
- River or Stream
- Lake or Reservoir



Copies of this map are available for public use at nominal cost.
OKLAHOMA DEPARTMENT OF TRANSPORTATION
PRINTING SERVICES Phone (405) 521-2566
200 N.E. 21st STREET
OKLAHOMA CITY, OKLAHOMA 73105-3204

This map indicates those roads known to the Department to be open to public travel. Placement of a road on the map has no relationship to maintenance responsibility by any level of government.



**STATE OF OKLAHOMA
DEPARTMENT OF TRANSPORTATION**

CITY OF
BARTLESVILLE
WASHINGTON COUNTY

CENSUS YEAR 2010
POPULATION 35,750

Legend

	Interstate		Railroad
	US Highway		Corporate Limit
	State Highway		BARTLESVILLE
	Highways		County Line
	Local Roads		Section Line
	UFC Routes		Wildlife Management Area
	Asphalt		Wildlife Refuge
	Concrete		River or Stream
	Gravel		Lake or Reservoir
	Grade & Drain		
	Unimproved		

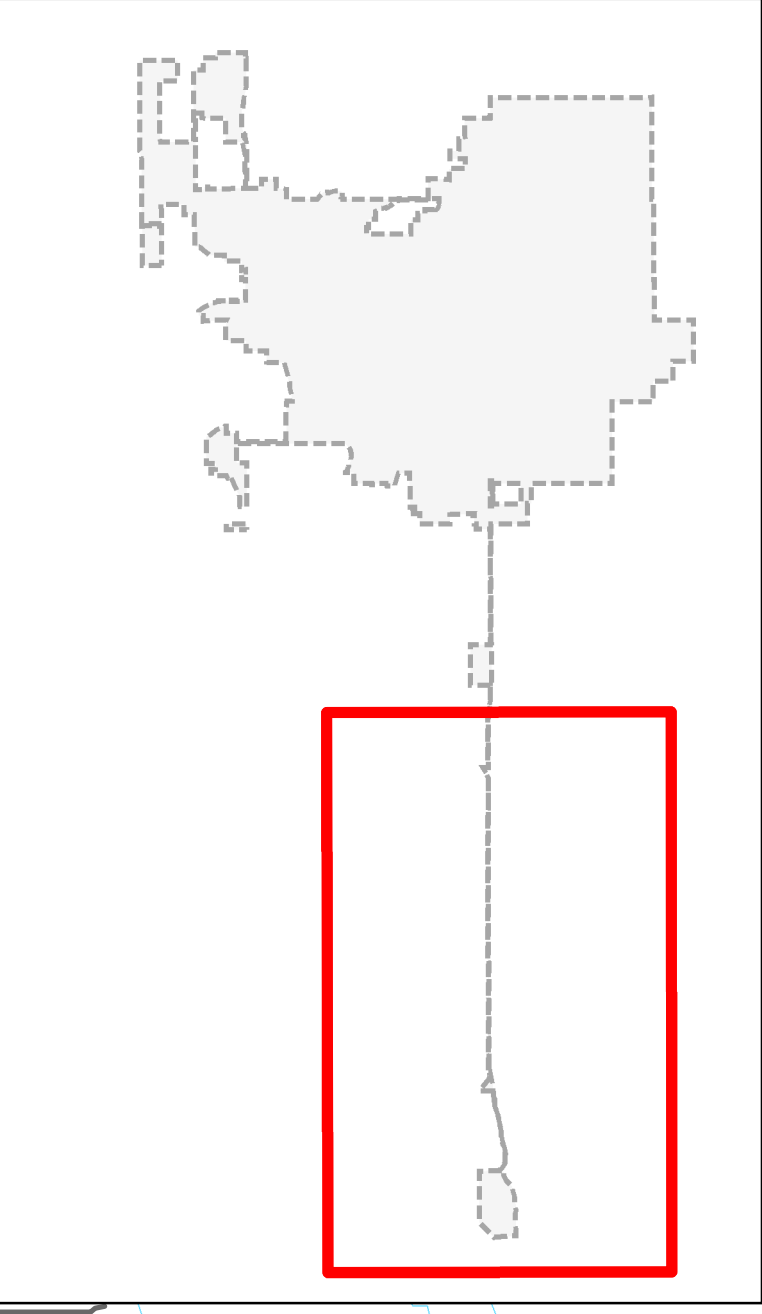
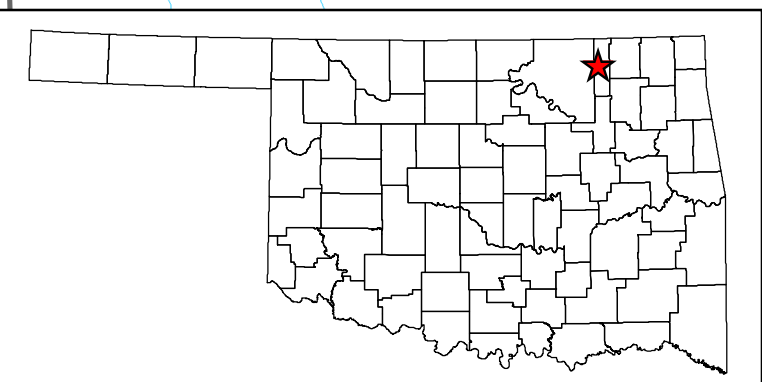
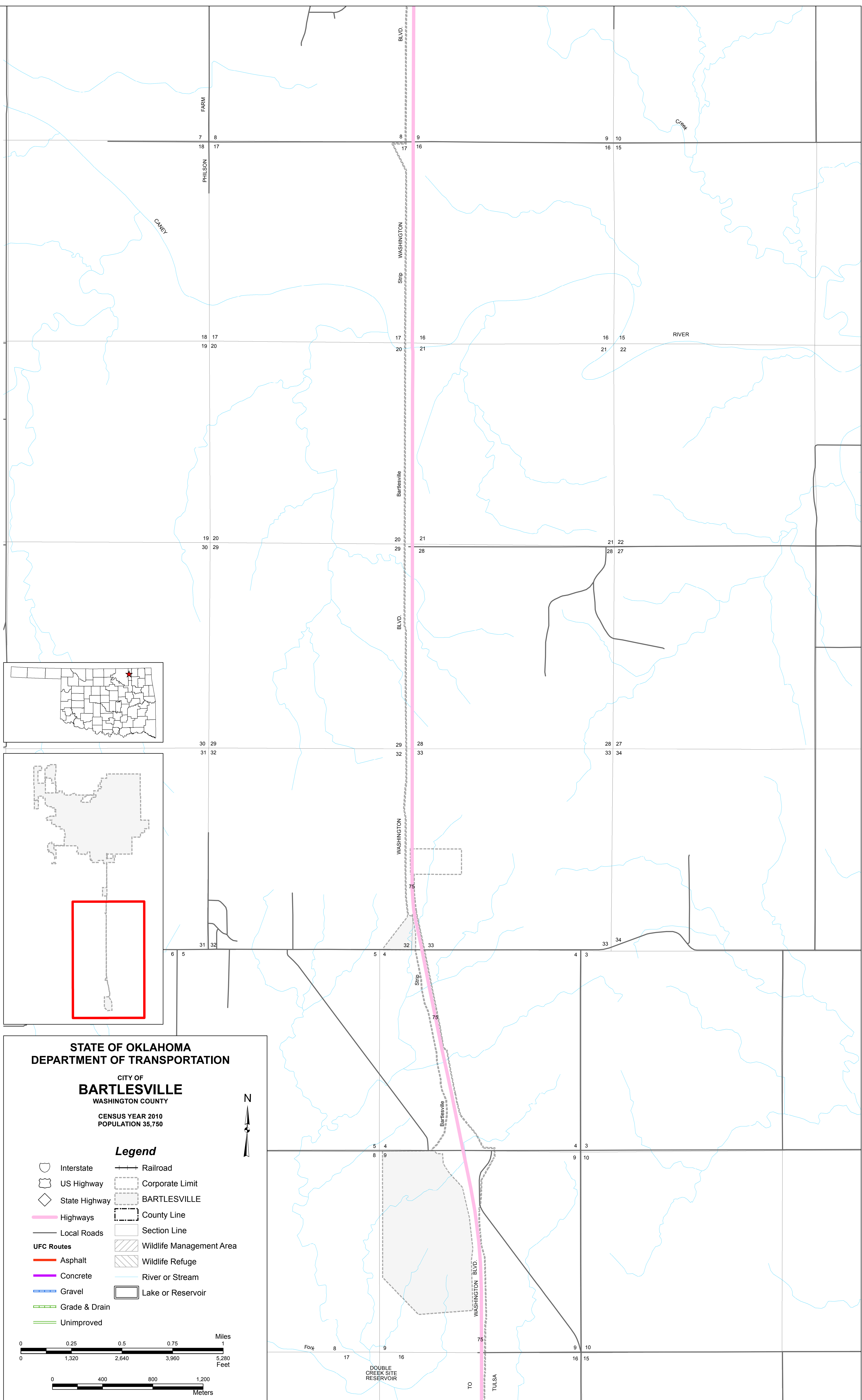
N

0 0.25 0.5 0.75 1 Miles
0 1,320 2,640 3,960 5,280 Feet

0 400 800 1,200 Meters

Copies of this map are available for public use at nominal cost.
 OKLAHOMA DEPARTMENT OF TRANSPORTATION
 PRINTING SERVICES Phone (405) 521-2566
 200 N.E. 21st STREET
 OKLAHOMA CITY, OKLAHOMA 73105-3204

This map indicates those roads known to the Department to be open to public travel. Placement of a road on the map has no relationship to maintenance responsibility by any level of government.



STATE OF OKLAHOMA
DEPARTMENT OF TRANSPORTATION

CITY OF
BARTLESVILLE
 WASHINGTON COUNTY

CENSUS YEAR 2010
 POPULATION 35,750

Legend

	Interstate		Railroad
	US Highway		Corporate Limit
	State Highway		BARTLESVILLE
	Highways		County Line
	Local Roads		Section Line
UFC Routes			Wildlife Management Area
	Asphalt		Wildlife Refuge
	Concrete		River or Stream
	Gravel		Lake or Reservoir
	Grade & Drain		
	Unimproved		

Miles: 0, 0.25, 0.5, 0.75, 1

Feet: 0, 1,320, 2,640, 3,960, 5,280

Meters: 0, 400, 800, 1,200

DOUBLE CREEK SITE RESERVOIR
 TO TULSA