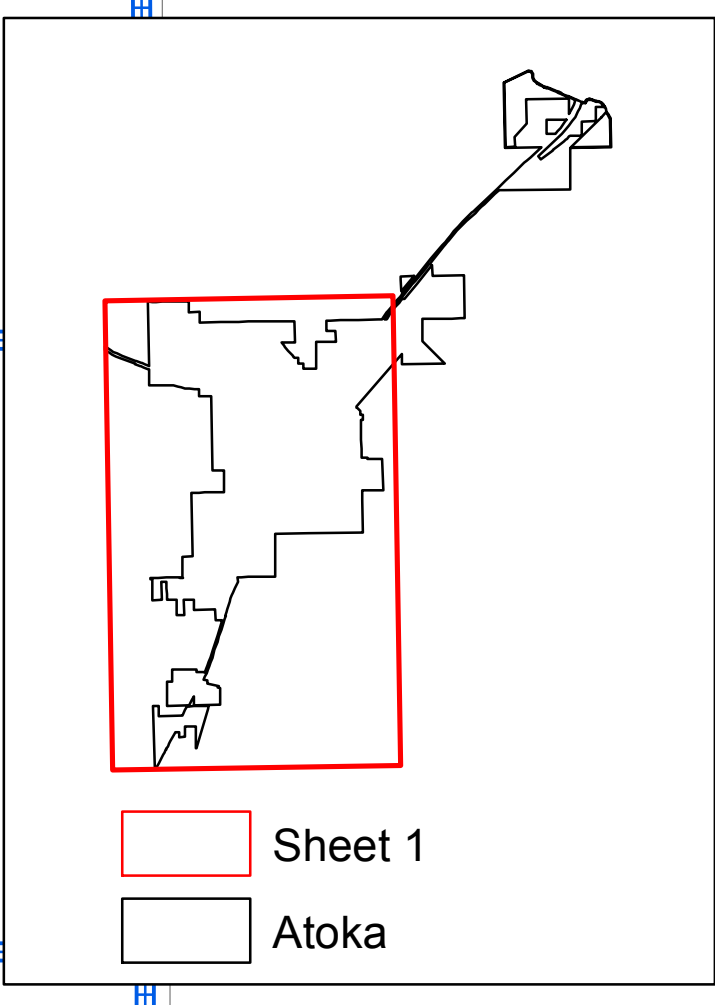
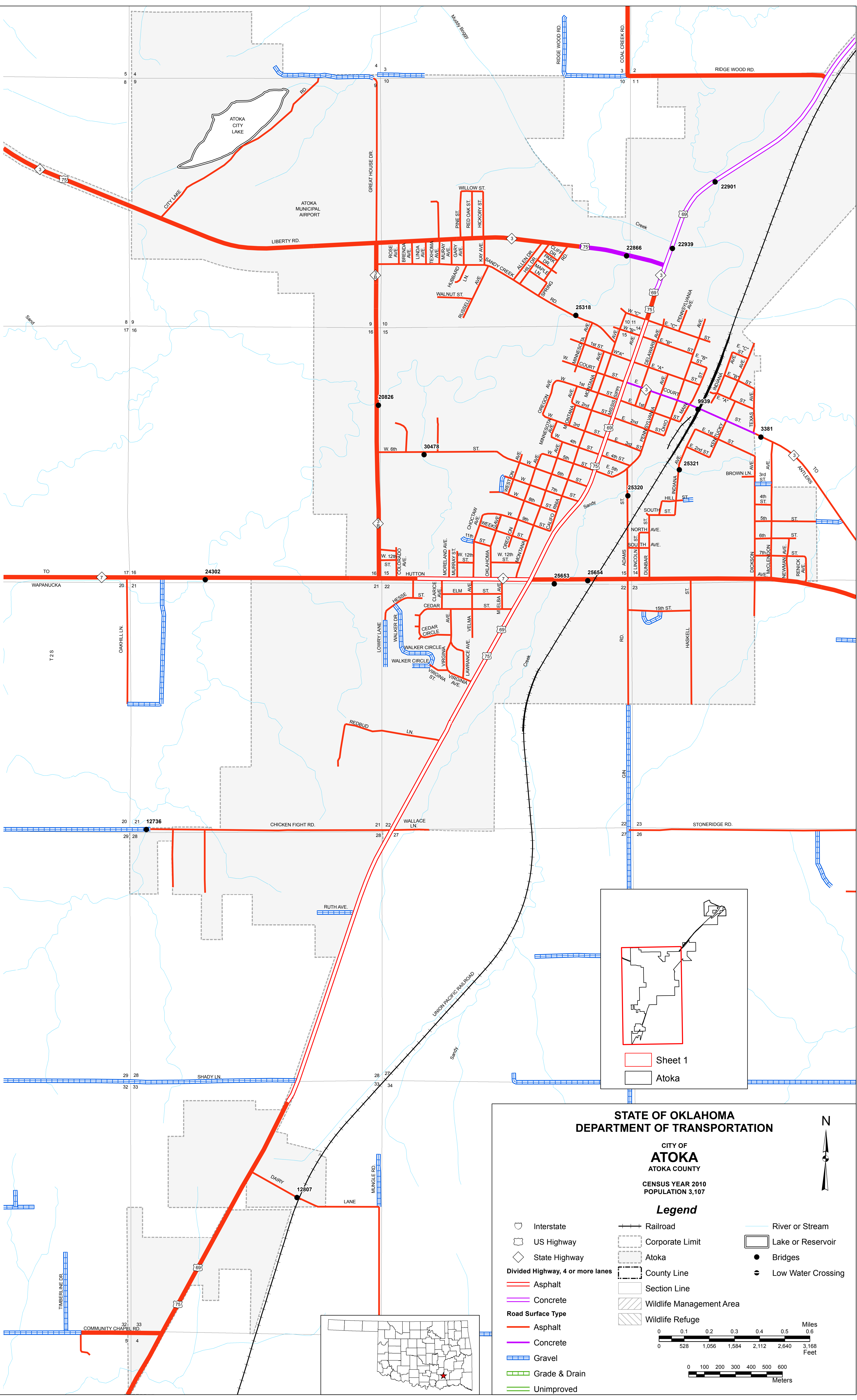
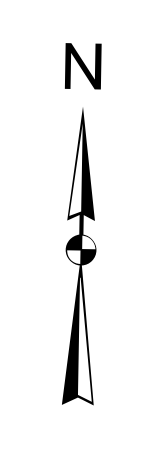


Copies of this map are available for public use at nominal cost.
OKLAHOMA DEPARTMENT OF TRANSPORTATION
PRINTING SERVICES Phone (405) 521-2566
200 N.E. 21st STREET
OKLAHOMA CITY, OKLAHOMA 73105-3204

This map indicates those roads known to the Department to be open to public travel. Placement of a road on the map has no relationship to maintenance responsibility by any level of government.



STATE OF OKLAHOMA
DEPARTMENT OF TRANSPORTATION
CITY OF
ATOKA
ATOKA COUNTY
CENSUS YEAR 2010
POPULATION 3,107

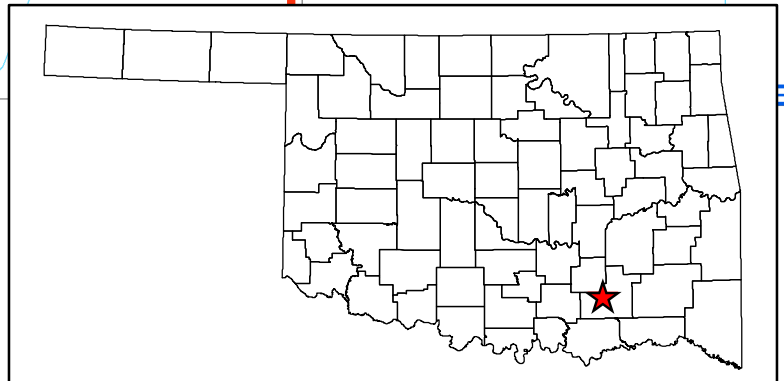


Legend

Interstate	Railroad	River or Stream
US Highway	Corporate Limit	Lake or Reservoir
State Highway	Atoka	Bridges
Divided Highway, 4 or more lanes	County Line	Low Water Crossing
Asphalt	Section Line	
Concrete	Wildlife Management Area	
Gravel	Wildlife Refuge	
Grade & Drain		
Unimproved		

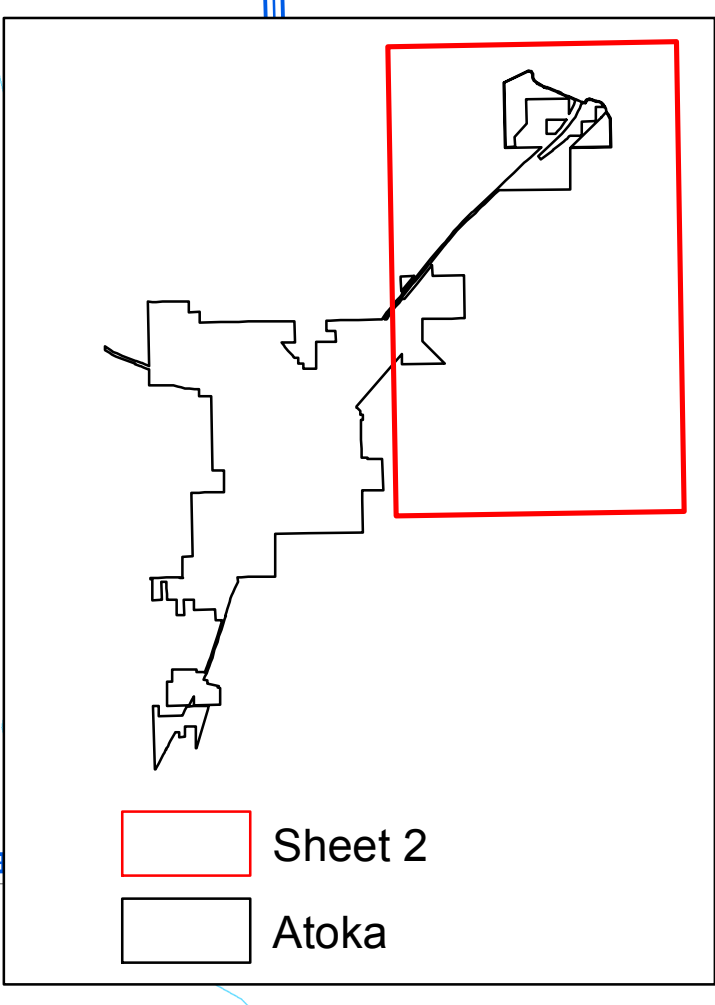
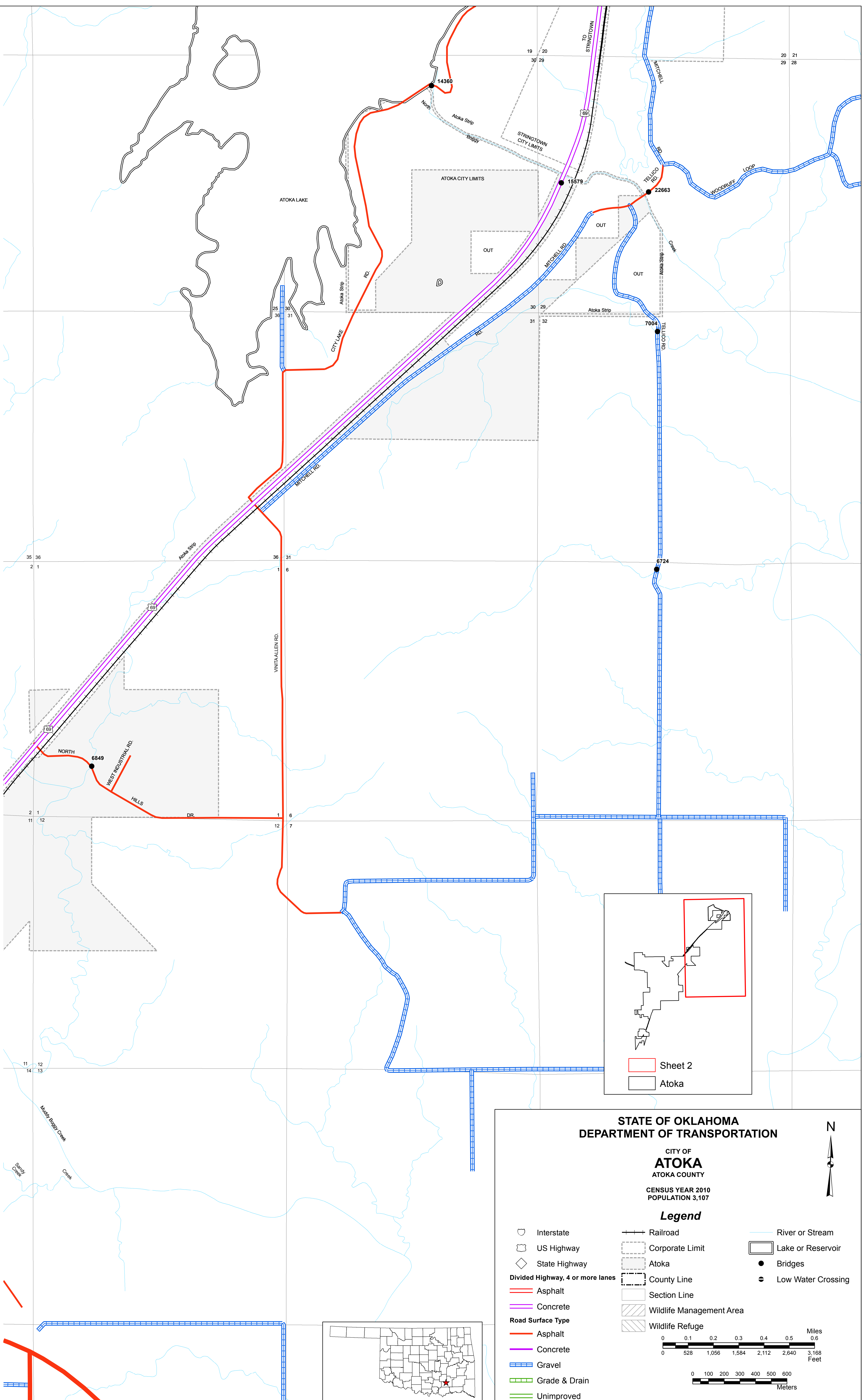
Miles
0 0.1 0.2 0.3 0.4 0.5 0.6
0 528 1,056 1,584 2,112 2,640 3,168
Feet

Meters
0 100 200 300 400 500 600



Copies of this map are available for public use at nominal cost.
OKLAHOMA DEPARTMENT OF TRANSPORTATION
PRINTING SERVICES Phone (405) 521-2596
200 N.E. 21st STREET
OKLAHOMA CITY, OKLAHOMA 73105-3204

This map indicates those roads known to the Department to be open to public travel. Placement of a road on the map has no relationship to maintenance responsibility by any level of government.



Sheet 2
Atoka

STATE OF OKLAHOMA
DEPARTMENT OF TRANSPORTATION

CITY OF
ATOKA
ATOKA COUNTY

CENSUS YEAR 2010
POPULATION 3,107

Legend

- Interstate
- US Highway
- State Highway
- Divided Highway, 4 or more lanes
- Asphalt
- Concrete
- Gravel
- Grade & Drain
- Unimproved
- Railroad
- Corporate Limit
- Atoka
- County Line
- Section Line
- Wildlife Management Area
- Wildlife Refuge
- River or Stream
- Lake or Reservoir
- Bridges
- Low Water Crossing

