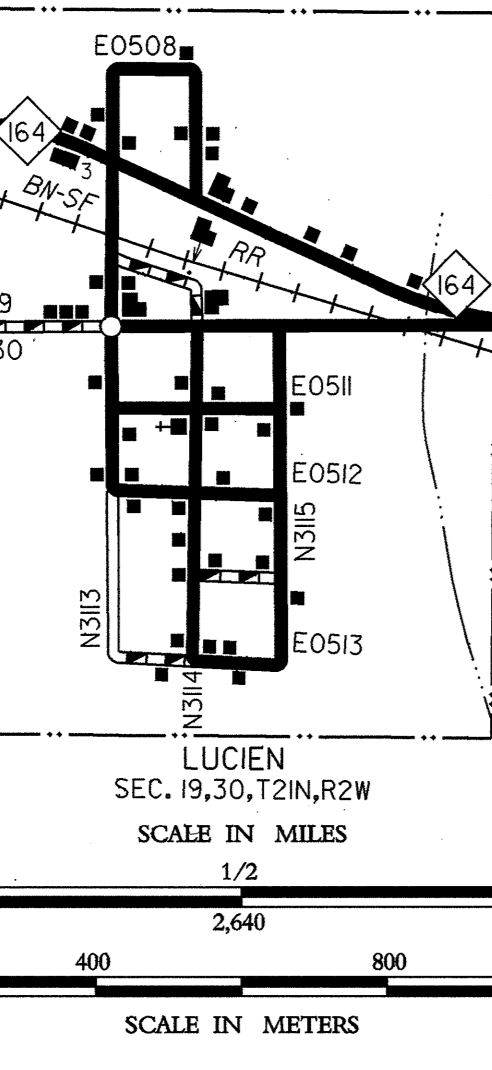


**LEGEND**

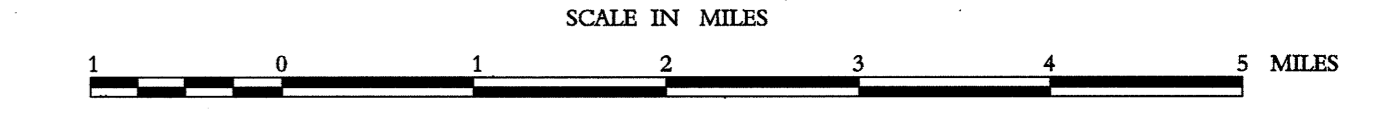
- U.S. NUMBERED HIGHWAY
- STATE NUMBERED HIGHWAY
- INTERSTATE HIGHWAY ROUTE
- PAVED ROAD
- GRAVEL ROAD
- GRADED & DRAINED ROAD
- UNIMPROVED ROAD
- PRIMITIVE ROAD
- PROJECTED ROAD
- RESIDENTIAL ROAD
- COUNTY ROAD 10 NO. 10000
- MILEAGE BETWEEN POINTS
- DIVIDED HIGHWAY, 4 OR MORE LANES
- UNDIVIDED HIGHWAY, 3 OR MORE LANES
- TRAFFIC CIRCLE
- HIGHWAY GRADE SEPARATION
- TRAFFIC INTERCHANGE
- STATE LINE
- CIVIL TOWNSHIP LINE
- SECTION LINE
- RURAL DEVELOPMENT AREA
- GOVERNMENT PROPERTY LINE
- MATCH LINE
- COUNTY SEAT
- TOWN CENTER
- CORPORATE LIMITS
- CIVIL TOWNSHIP, ROAD IN PLACE
- INSET BOUNDARY
- ELEVATION ABOVE SEA LEVEL
- MOUNTAIN RANGE, BUTTE OR MESA
- SMALL MONUMENT
- MARSH OR SWAMP LANDS
- DRAINAGE DITCH
- IRRIGATION DITCH
- LAKE, RESERVOIR OR POND WITH DAM
- ROAD OVER DAM
- DRY LAKE SUBJECT TO FLOOD
- SMALL BRIDGES CLOSELY SPACED
- HIGHWAY BRIDGE, OVER 20FT. IN LENGTH
- GENERAL BRIDGE, LONG CROSSING
- ARCH BRIDGE
- TRUSS BRIDGE, W-WOOD, S-STEEL, C-CONCRETE
- CONCRETE DIP OR FORD
- FORD ROAD, ESTABLISHED
- INTERMITTENT STREAM
- NARROW STREAM
- DOCK PIER OR LANDING
- NAVIGABLE STREAM WITH LOCK & DAM
- WIDE STREAM OR RIVER
- TRIANGULATION STATION
- RAILROAD, ANY NUMBER OF TRACKS
- RAILROAD WITH STATION INDICATED
- GRADE CROSSING
- UNDERPASS, R.R. ABOVE
- OVERPASS, R.R. BELOW
- RAILROAD ON STREET
- MILITARY AIRFIELD
- AIRPORT WITH COMPLETE FACILITIES
- AIRPORT WITH LIMITED FACILITIES
- LANDING STRIP, PRIVATE FIELD
- AIRPORT, GENERAL OUTLINE OF FIELD
- RUNWAYS SHOWN IN POSITION
- ROADSIDE PARK
- PICNIC GROUNDS
- PLAYGROUNDS
- BATHING BEACH OR SWIMMING POOL
- SCENIC SITE
- MOTEL
- CAMP OR LODGE, PERMANENT WITH BUILDINGS
- SMALL PARK, SP-STATE, CP-COUNTY
- SP-MUNICIPAL, TP-TRAILER PARK
- FOREST RANGER STATION
- OBSERVATION OR LOOKOUT TOWER
- CAMP SITE
- FISH HATCHERY
- GOLF COURSE OR COUNTRY CLUB
- ATHLETIC FIELD OR AMUSEMENT PARK
- FAIRGROUNDS, RACE COURSE
- DWELLING, NUMBER OF DWELLINGS CLOSELY SPACED
- COMBINED BUSINESS AND DWELLING
- POST OFFICE
- POST OFFICE COMBINATIONS
- SEASONAL DWELLINGS
- CHURCH OR OTHER RELIGIOUS BUILDING
- CEMETERY
- CHURCH WITH CEMETERY ADJACENT
- REST HOME
- HOSPITAL
- SMALL BUSINESS
- INDUSTRY
- SAW MILL
- MINE, SHAFT OR DRIFT
- OIL OR GAS FIELD
- GAUGING OR PUMPING STATION
- WAREHOUSE
- GRAVEL PIT
- QUARRY
- SCHOOL
- COMMUNITY HALL OR LODGE
- DRIVE-IN THEATER
- CORRECTIONAL INSTITUTION
- HIGHWAY GARAGE
- JUNK YARDS & DUMPS, A-AUTOMOBILE, B-BUILDING MATERIAL, C-REFUSE, GARBAGE OR TRASH DUMP, D-OTHER
- SEWAGE DISPOSAL PLANT
- WATER SUPPLY STAND PIPE
- POWER SUBSTATION
- BOOSTER STATION
- TELEVISION OR RADIO STATION
- MILITARY INSTALLATION



GENERAL HIGHWAY MAP  
**NOBLE COUNTY**  
OKLAHOMA

PREPARED BY THE  
OKLAHOMA DEPARTMENT OF TRANSPORTATION  
PLANNING DIVISION

IN COOPERATION WITH THE  
U.S. DEPARTMENT OF TRANSPORTATION  
FEDERAL HIGHWAY ADMINISTRATION



ALL DATA CURRENT TO  
DATE OF INVENTORY  
APRIL 1995  
ORIGINAL DRAFTING BY W.A.T. DEC. 1996  
STATE SYSTEM REVISED TO AUG. 1997

SCALE IN KILOMETERS  
LAMBERT CONFORMAL CONIC PROJECTION, U.S. & GEODETIC SURVEY DATA  
20,000 FOOT GRID; OKLAHOMA PLANE COORDINATE SYSTEM; NORTH PROJECTION ZONE  
POPULATION FIGURES BASED ON 1990 U.S. CENSUS  
CO. POP. 11,045

Copies of this map are available for public use at nominal cost. This map indicates those roads known to the Department to be open to public travel. Placement of a road on the map has no relationship to maintenance responsibility by any level of government.  
Address: OKLAHOMA DEPARTMENT OF TRANSPORTATION  
REPRODUCTION BRANCH Phone (405) 521-2586  
200 N.E. 71st STREET  
OKLAHOMA CITY, OKLAHOMA 73105-3204

NOT FOR RESALE