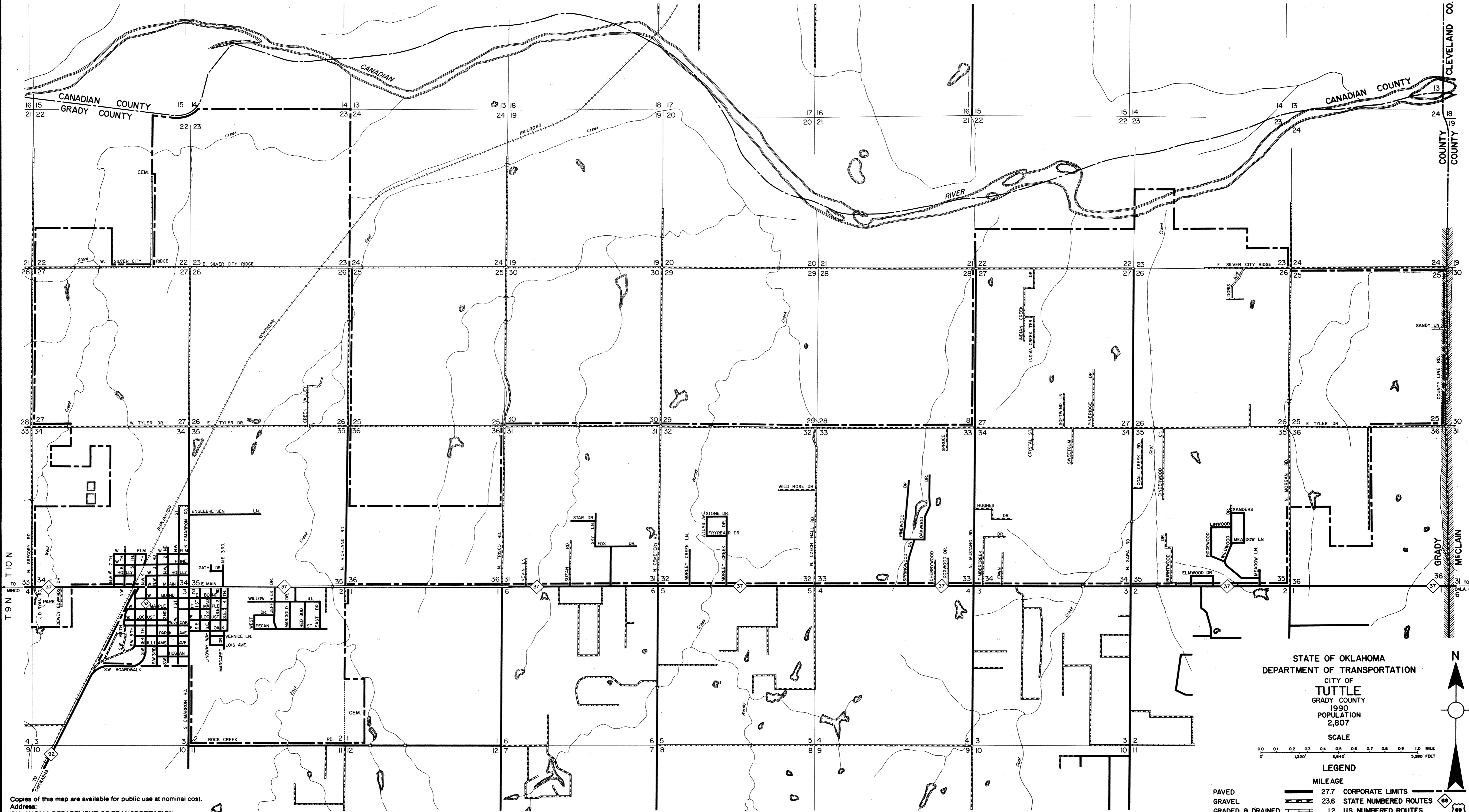


R 6 W R 5 W

R 5 W R 4 W



Copies of this map are available for public use at nominal cost.
 Address:
 OKLAHOMA DEPARTMENT OF TRANSPORTATION
 REPRODUCTION BRANCH (Phone - 521-2586)
 200 N. E. 21st STREET
 OKLAHOMA CITY, OKLA. 73105

This map indicates those roads known to the Department to be open to public travel. Placement of a road on the map has no relationship to maintenance responsibility by any level of government.

STATE OF OKLAHOMA
 DEPARTMENT OF TRANSPORTATION
 CITY OF
TUTTLE
 GRADY COUNTY
 1990
 POPULATION
 2,807

SCALE
 0 0.1 0.2 0.3 0.4 0.5 0.6 0.7 0.8 0.9 1.0 MILE
 0 1,320 2,640 5,280 FEET

LEGEND

	27.7	CORPORATE LIMITS	
	23.6	STATE NUMBERED ROUTES	
	1.2	U.S. NUMBERED ROUTES	
	0.0	INTERSTATE ROUTES	
	52.5	STREETS 50.5	HIGHWAYS 2.0
ALL RIGHTS RESERVED			

