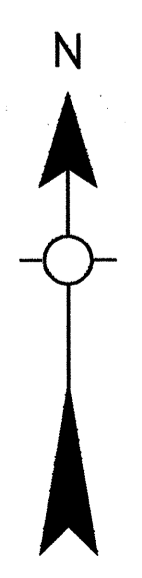
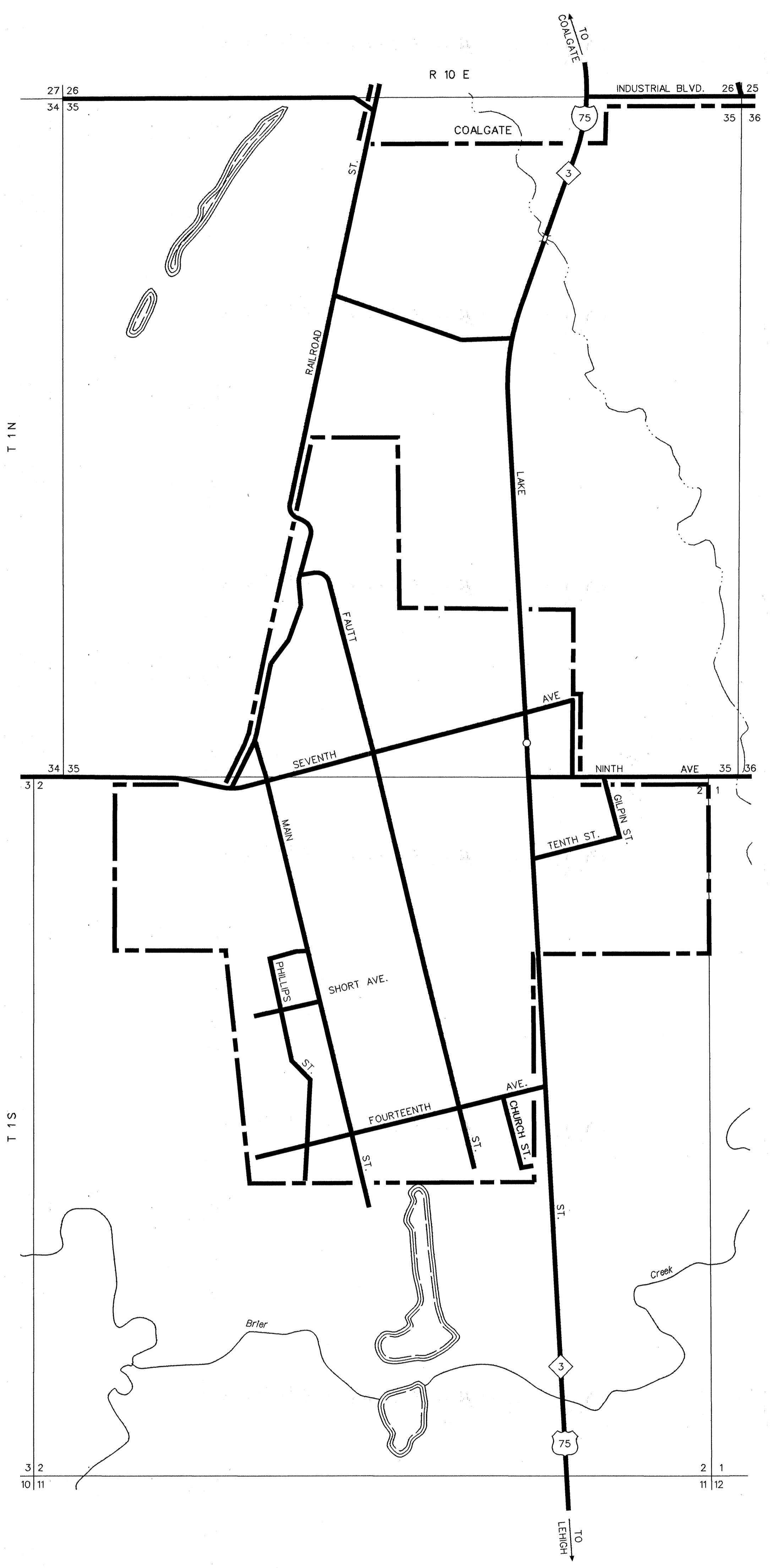
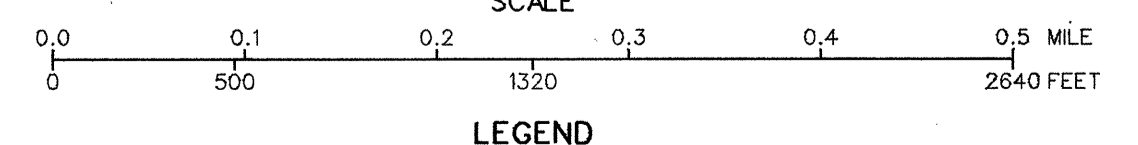






Copies of this map are available for public use at nominal cost.  
 Address:  
 OKLAHOMA DEPARTMENT OF TRANSPORTATION  
 REPRODUCTION BRANCH (Phone - 521-2586)  
 200 N.E. 21st STREET  
 OKLAHOMA CITY, OKLA. 73105



STATE OF OKLAHOMA  
 DEPARTMENT OF TRANSPORTATION  
 CITY OF  
**PHILLIPS**  
 COAL COUNTY  
 1990  
 POPULATION  
 161



SCALE  
 0.0 0.1 0.2 0.3 0.4 0.5 MILE  
 0 500 1320 2640 FEET

**LEGEND**  
 CORPORATE LIMITS ———  
 STATE NUMBERED ROUTES    
 U.S. NUMBERED ROUTES    
 INTERSTATE ROUTES

ALL RIGHTS RESERVED

PHILLIPS, COAL CO.  
 SEPTEMBER 1991