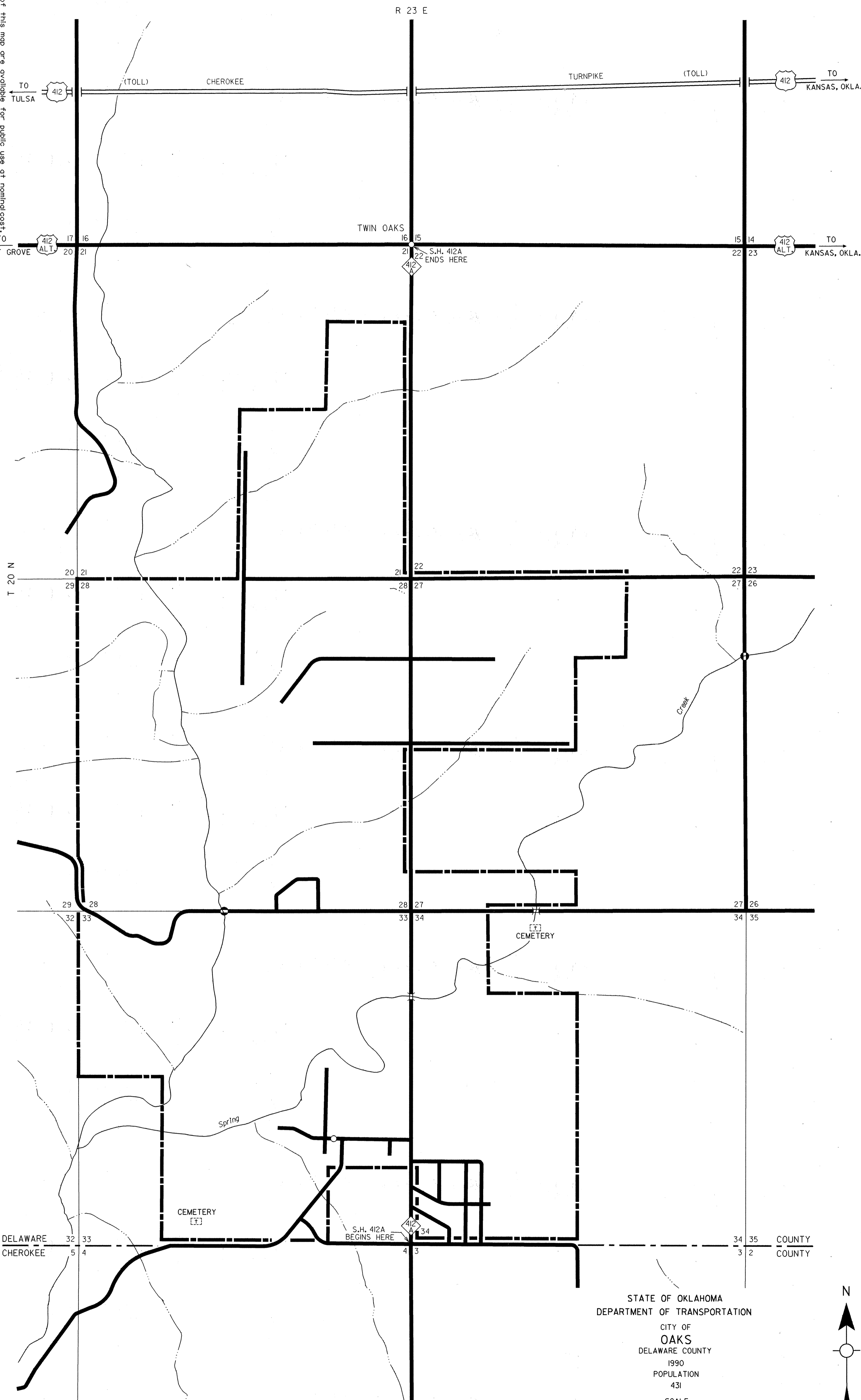


Copies of this map are available for public use at nominal cost.
Address:
OKLAHOMA DEPARTMENT OF TRANSPORTATION
REPRODUCTION BRANCH (phone - 521-2586)
200 N.E. 21st STREET
OKLAHOMA CITY, OKLA. 73105



STATE OF OKLAHOMA
DEPARTMENT OF TRANSPORTATION
CITY OF
OAKS
DELAWARE COUNTY
1990
POPULATION
431

SCALE
0 0.1 0.2 0.3 0.4 0.5 MILE
0 660' 1,320' 2,640' FEET

LEGEND
CORPORATE LIMITS [thick solid line]
STATE NUMBERED ROUTES [dashed line]
U.S. NUMBERED ROUTES [shield symbol]
INTERSTATE ROUTES [diamond symbol]

TO TULSA
TO KANSAS, OKLA.
TO KANSAS, OKLA.

LOCUST GROVE
TWIN OAKS
S.H. 412A ENDS HERE
S.H. 412A BEGINS HERE
Cemetery
Cemetery
Creek
Spring

R 23 E
T 20 N

DELAWARE COUNTY
CHEROKEE COUNTY

SEPT. 1992